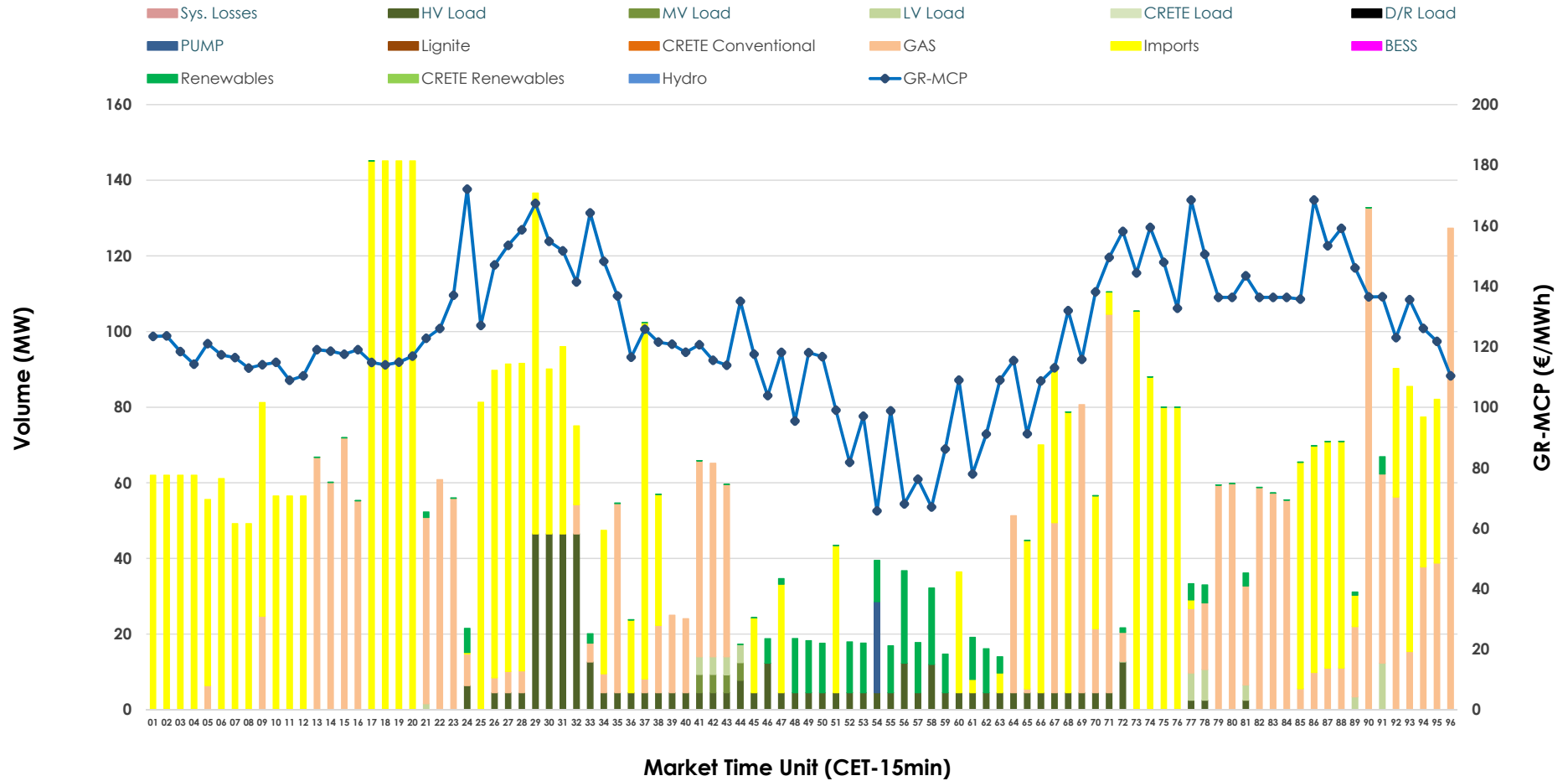


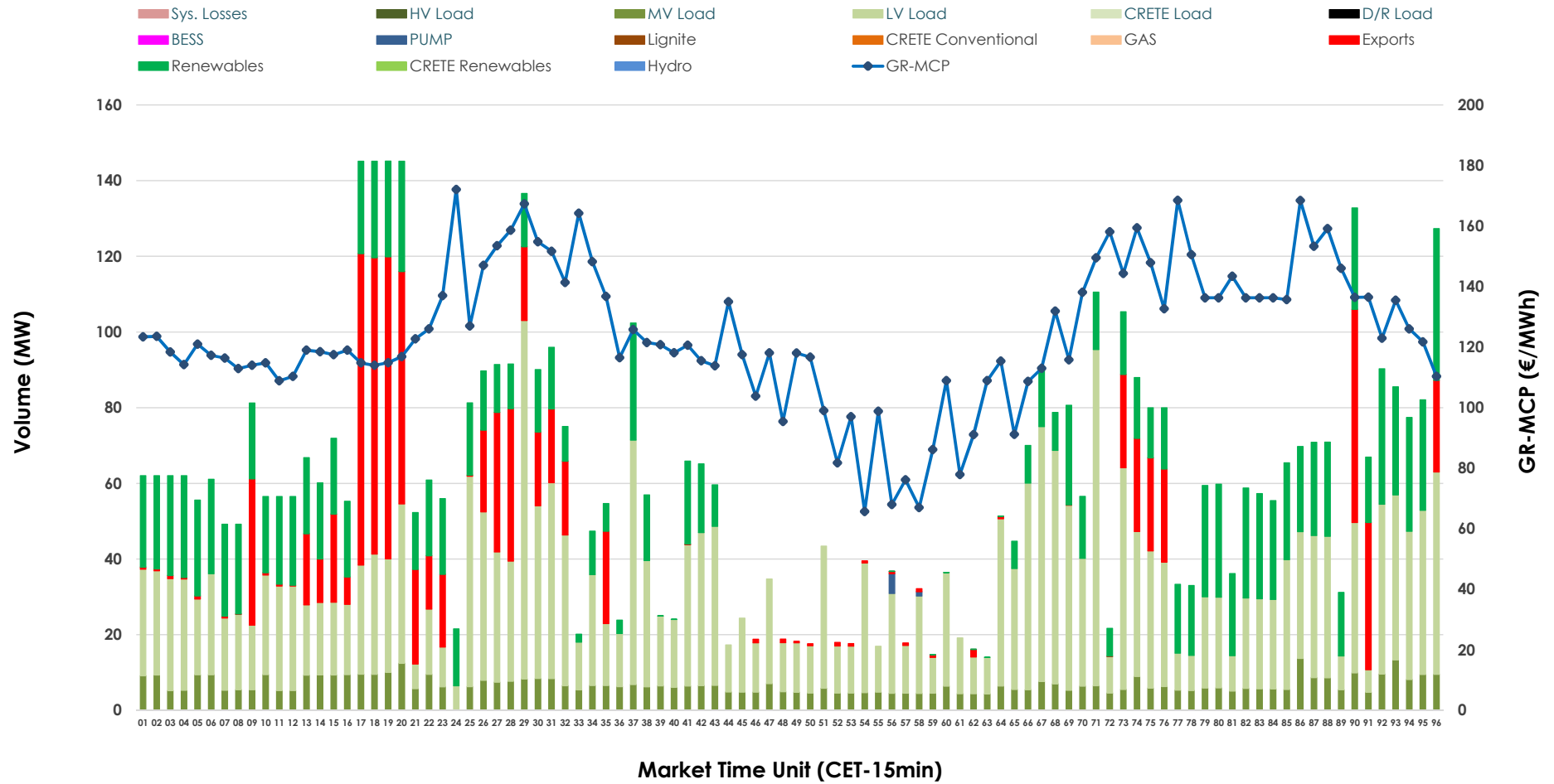


IDA '1' Market Outlook

15.04.2026 IDA '1' Market - Sell



15.04.2026 IDA '1' Market - Buy



GR Bidding Zone Weekly Figures

Delivery Day	09.04	10.04	11.04	12.04	13.04	14.04	15.04
	↗ 20%	↘ 3%	↘ -11%	↘ -5%	↗ 10%	↗ 50%	↘ -7%
Avg.MCP (€/MWh)	92.32	95.36	85.00	80.90	88.91	133.10	124.20
Max.MCP (€/MWh)	192.88	192.88	184.98	160.00	166.41	266.00	172.06
Min.MCP (€/MWh)	-10.96	-4.00	-9.45	-6.33	-12.71	14.48	65.70
	↗ 12%	↘ -20%	↗ 9%	↘ 29%	↘ -30%	↗ -1%	↘ -10%
Tot.Vol(GWh)	4.14	3.31	3.62	4.68	3.28	3.26	2.91

Trades by Order Type

Delivery Day		09.04	10.04	11.04	12.04	13.04	14.04	15.04	
Ord Price Type		Sell & Buy Trades in (GWh) per Price Type							(%)
PPT	(S)	0.000	0.000	0.000	0.000	0.000	0.000	0.000	0.00%
HBD	(S)	0.954	1.454	1.223	1.593	0.819	1.136	0.668	45.82%
BLK	(S)	0.000	0.000	0.000	0.000	0.000	0.000	0.000	0.00%
CPL	(S)	1.116	0.202	0.588	0.749	0.822	0.492	0.790	54.18%
PPT	(B)	0.000	0.000	0.000	0.000	0.000	0.000	0.000	0.00%
HBD	(B)	1.754	1.276	1.339	1.271	0.971	0.771	1.234	84.66%
BLK	(B)	0.000	0.000	0.000	0.000	0.000	0.000	0.000	0.00%
CPL	(B)	0.316	0.380	0.472	1.072	0.670	0.858	0.224	15.34%
		Sell & Buy Orders Traded per Price Type							(%)
PPT	(S)	0	0	0	0	0	0	0	0.00%
HBD	(S)	208	358	85	162	89	127	130	100.00%
BLK	(S)	0	0	0	0	0	0	0	0.00%
PPT	(B)	0	0	0	0	0	0	0	0.00%
HBD	(B)	840	502	670	451	567	501	793	100.00%
BLK	(B)	0	0	0	0	0	0	0	0.00%

- MCP** Market Clearing Price (€/MWh)
- PPT** Priority Price-Taking
- HBD** Hybrid
- BLK** Block
- CPL** Market Coupling Flow

Trade's Volume Mix

	Sell - MWh	Buy - MWh	
Lignite (0.0%)	0	0	(0.0%)
Crete Conv. (0.0%)	0	0	(0.0%)
Gas (32.8%)	478	0	(0.0%)
Hydro (0.0%)	0	0	(0.0%)
Imports (54.2%)	790		
RES (3.8%)	56	368	(25.3%)
Crete RES (0.0%)	0	0	(0.0%)
BESS (0.0%)	0	0	(0.0%)
HV Load (7.5%)	109	0	(0.0%)
MV Load (0.3%)	5	162	(11.1%)
LV Load (1.0%)	14	702	(48.2%)
Crete Load (0.0%)	0	0	(0.0%)
Pumping (0.4%)	6	2	(0.1%)
Exports		224	(15.3%)
Sys.Losses (0.0%)	0	0	(0.0%)
D/R Load (0.0%)	0	0	(0.0%)

