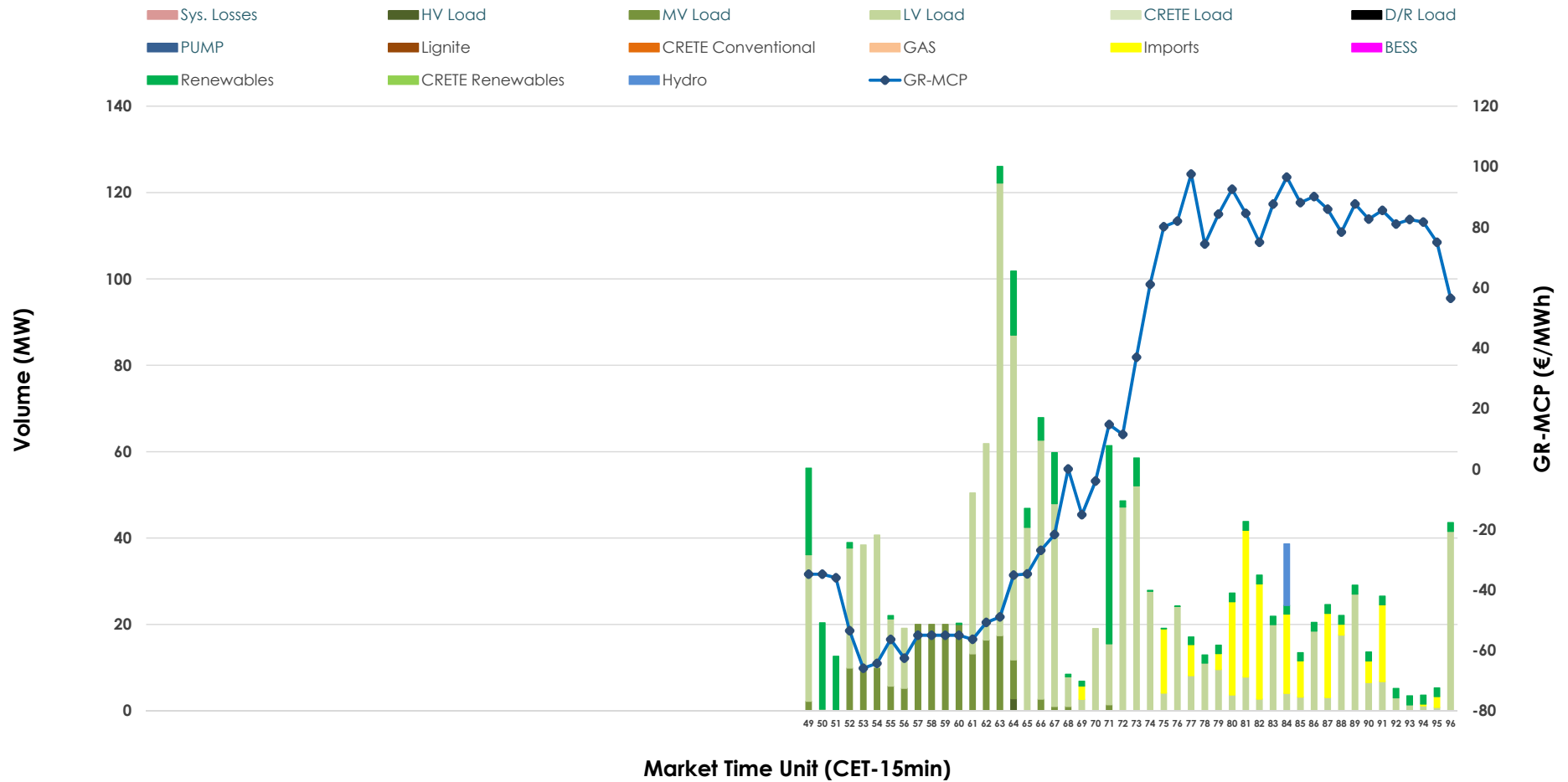


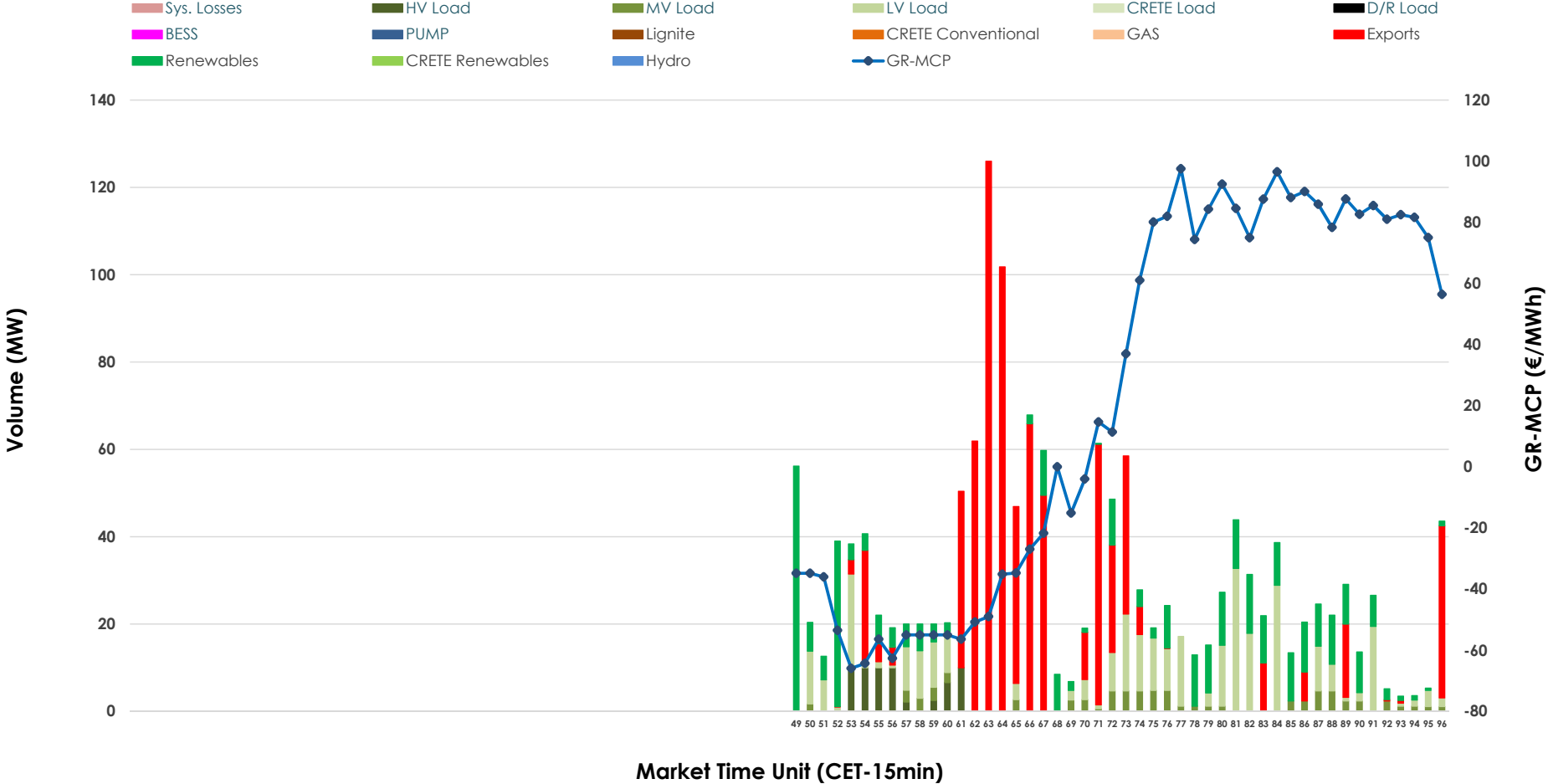


IDA '3' Market Outlook

05.04.2026 IDA '3' Market - Sell



05.04.2026 IDA '3' Market - Buy



GR Bidding Zone Weekly Figures

Delivery Day	30.03	31.03	01.04	02.04	03.04	04.04	05.04
	↑ 76%	↔ 19%		↘ -3%	↓ -65%	↓ -54%	
Avg.MCP (€/MWh)	123.82	147.08	N/M	136.63	132.06	46.59	21.49
Max.MCP (€/MWh)	223.00	225.64	N/M	190.13	203.39	129.90	97.54
Min.MCP (€/MWh)	-19.98	93.62	N/M	104.38	59.05	-11.64	-65.92
	↑ 45%	↘ -22%		↘ -17%	↘ -30%	↓ -69%	
Tot.Vol(GWh)	2.13	1.67	N/M	4.25	3.55	2.49	0.77

Trades by Order Type

Delivery Day		30.03	31.03	01.04	02.04	03.04	04.04	05.04	
Ord Price Type		Sell & Buy Trades in (GWh) per Price Type							(%)
PPT	(S)	0.000	0.000		0.000	0.000	0.000	0.000	0.00%
HBD	(S)	0.789	0.673		0.189	0.695	1.245	0.338	87.91%
BLK	(S)	0.000	0.000		0.000	0.000	0.000	0.000	0.00%
CPL	(S)	0.275	0.161		1.938	1.080	0.000	0.046	12.09%
PPT	(B)	0.000	0.000		0.000	0.000	0.000	0.000	0.00%
HBD	(B)	0.960	0.707		1.640	0.807	0.126	0.200	52.06%
BLK	(B)	0.000	0.000		0.000	0.000	0.000	0.000	0.00%
CPL	(B)	0.104	0.127		0.487	0.968	1.120	0.184	47.94%
		Sell & Buy Orders Traded per Price Type							(%)
PPT	(S)	0	0		0	0	0	0	0.00%
HBD	(S)	244	169		143	309	206	130	100.00%
BLK	(S)	0	0		0	0	0	0	0.00%
PPT	(B)	0	0		0	0	0	0	0.00%
HBD	(B)	241	280		412	283	112	130	100.00%
BLK	(B)	0	0		0	0	0	0	0.00%

- MCP** Market Clearing Price (€/MWh)
- PPT** Priority Price-Taking
- HBD** Hybrid
- BLK** Block
- CPL** Market Coupling Flow

Trade's Volume Mix

	Sell - MWh	Buy - MWh	
Lignite (0.0%)	0	0	(0.0%)
Crete Conv. (0.0%)	0	0	(0.0%)
Gas (0.0%)	0	0	(0.0%)
Hydro (0.9%)	4	0	(0.0%)
Imports (12.1%)	46		
RES (12.4%)	48	87	(22.6%)
Crete RES (0.0%)	0	0	(0.0%)
BESS (0.0%)	0	0	(0.0%)
HV Load (0.2%)	1	15	(4.0%)
MV Load (12.0%)	46	19	(4.9%)
LV Load (62.4%)	240	79	(20.6%)
Crete Load (0.0%)	0	0	(0.0%)
Pumping (0.0%)	0	0	(0.0%)
Exports		184	(47.9%)
Sys.Losses (0.0%)	0	0	(0.0%)
D/R Load (0.0%)	0	0	(0.0%)

