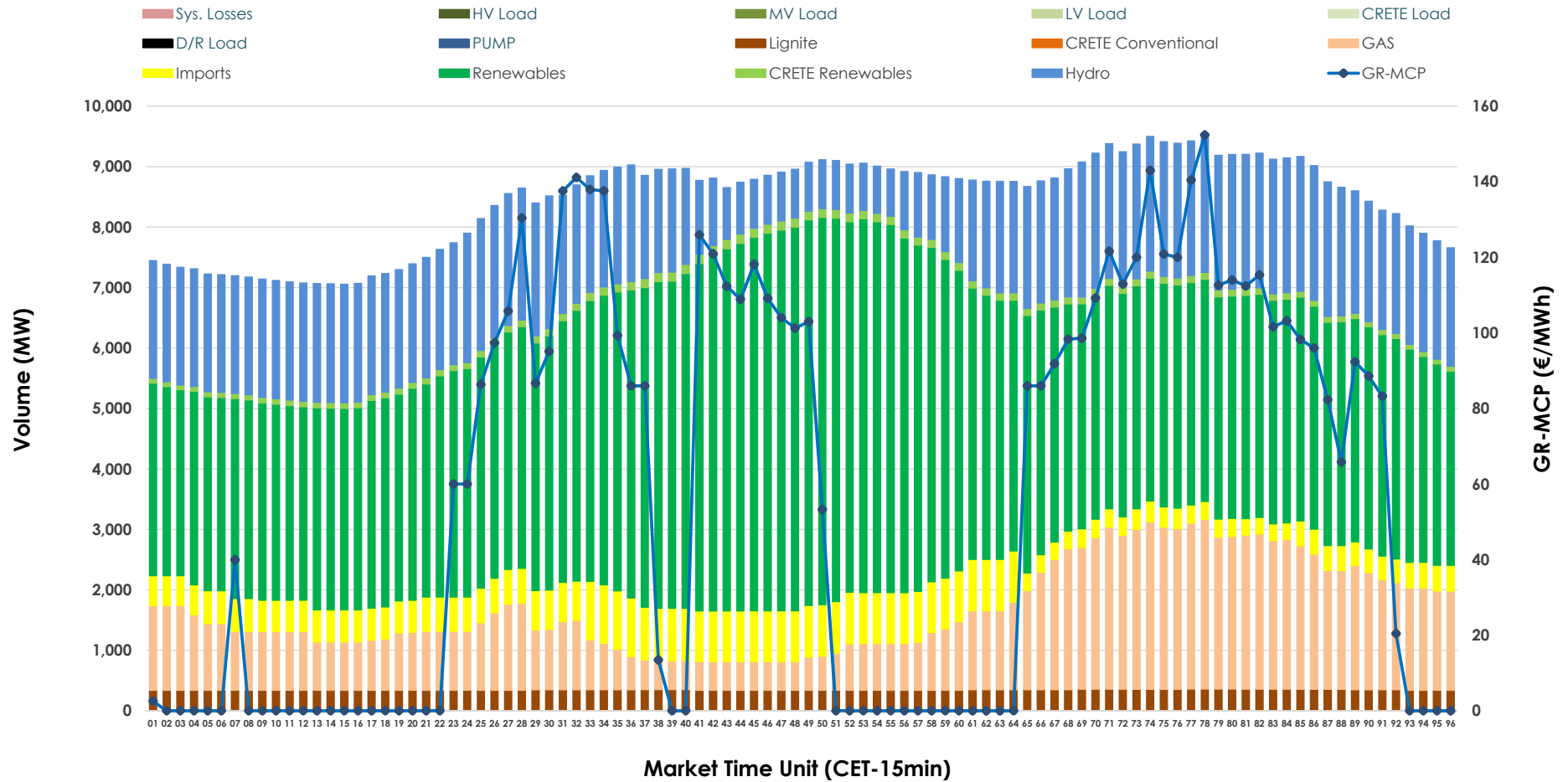


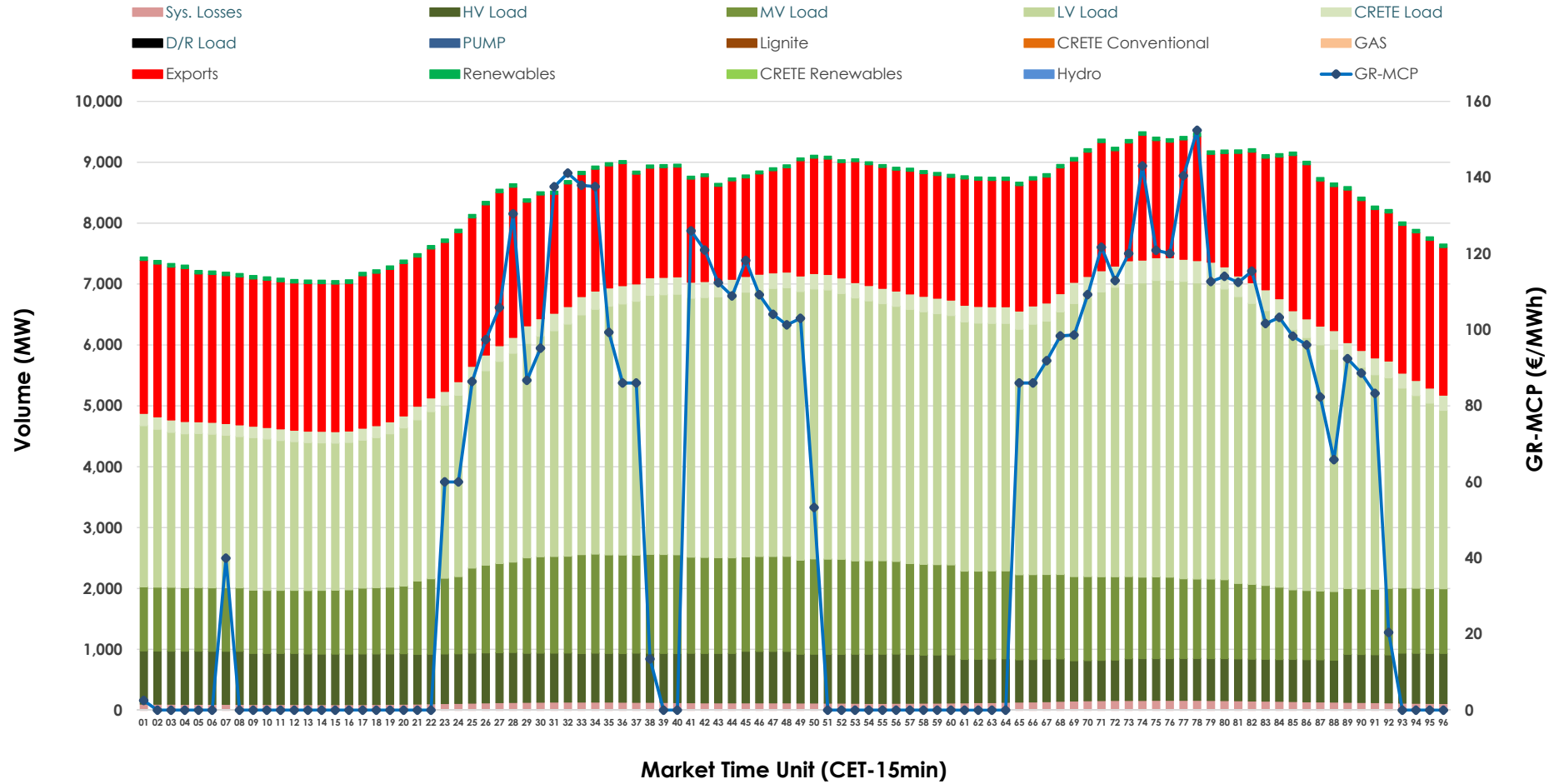


Day-Ahead Market Outlook

17.02.2026 Day-Ahead Market - Sell



17.02.2026 Day-Ahead Market - Buy



GR Bidding Zone Weekly Figures

Delivery Day	11.02	12.02	13.02	14.02	15.02	16.02	17.02
	👇 -11%	👇 -19%	👆 9%	👇 -28%	👇 -59%	👆 166%	👇 -20%
Avg.MCP (€/MWh)	103.57	83.74	91.43	65.70	27.10	71.96	57.80
Max.MCP (€/MWh)	145.00	113.10	141.81	116.13	96.30	163.98	152.38
Min.MCP (€/MWh)	35.29	0.01	0.01	0.01	-0.10	0.00	0.00
	👉 0%	👆 3%	👇 -4%	👇 -4%	👇 -10%	👆 7%	👆 9%
Tot.Vol(GWh)	409.25	420.46	404.98	386.76	348.20	372.50	405.83

Trades by Order Type

Delivery Day		11.02	12.02	13.02	14.02	15.02	16.02	17.02	
Ord Price Type		Sell & Buy Trades in (GWh) per Price Type							(%)
PPT	(S)	102.018	115.484	104.129	102.419	106.090	101.437	116.187	57.26%
HBD	(S)	66.237	72.762	68.013	69.070	60.657	65.090	67.805	33.42%
BLK	(S)	35.597	21.985	28.714	21.890	7.351	19.722	14.780	7.28%
CPL	(S)	0.771	0.000	1.634	0.000	0.000	0.000	4.142	2.04%
PPT	(B)	13.499	13.165	13.224	12.407	13.254	14.176	12.318	6.07%
HBD	(B)	150.234	150.839	146.580	137.891	127.444	137.125	153.387	75.59%
BLK	(B)	0.000	0.000	0.000	0.000	0.000	0.000	0.000	0.00%
CPL	(B)	40.890	46.227	42.686	43.080	33.399	34.948	37.209	18.34%
		Sell & Buy Orders Traded per Price Type							(%)
PPT	(S)	2522	2454	2309	2270	2169	2324	2508	49.90%
HBD	(S)	2839	2701	2811	2763	2249	2572	2512	49.98%
BLK	(S)	10	13	11	9	3	10	6	0.12%
PPT	(B)	2218	2237	2231	2341	2367	2366	2323	35.43%
HBD	(B)	4018	4097	4012	4210	4372	4040	4233	64.57%
BLK	(B)	0	0	0	0	0	0	0	0.00%

- MCP** Market Clearing Price (€/MWh)
- PPT** Priority Price-Taking
- HBD** Hybrid
- BLK** Block
- CPL** Market Coupling Flow

Trade's Volume Mix

		Sell - MWh	Buy - MWh	
Lignite	(4.1%)	8,296	0	(0.0%)
Crete Conv.	(0.0%)	0	0	(0.0%)
Gas	(15.9%)	32,356	0	(0.0%)
Hydro	(21.3%)	43,170	0	(0.0%)
Imports	(6.9%)	14,047		
RES	(50.4%)	102,303	1,257	(0.6%)
Crete RES	(1.4%)	2,742	0	(0.0%)
HV Load	(0.0%)	0	18,791	(9.3%)
MV Load	(0.0%)	0	31,863	(15.7%)
LV Load	(0.0%)	0	89,849	(44.3%)
Crete Load	(0.0%)	0	6,442	(3.2%)
Pumping	(0.0%)	0	0	(0.0%)
Exports			51,728	(25.5%)
Sys.Losses	(0.0%)	0	2,984	(1.5%)
D/R Load	(0.0%)	0	0	(0.0%)

