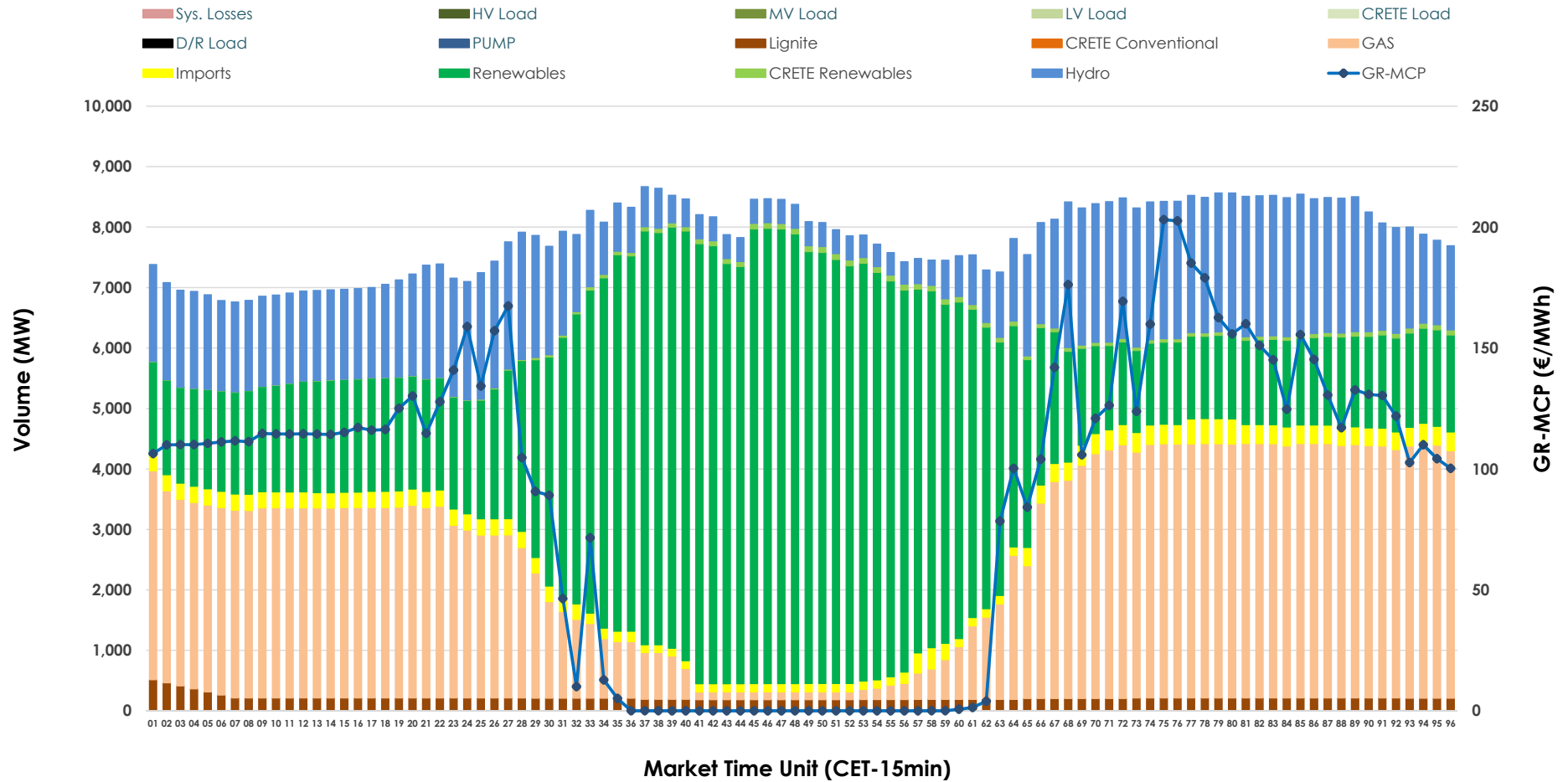


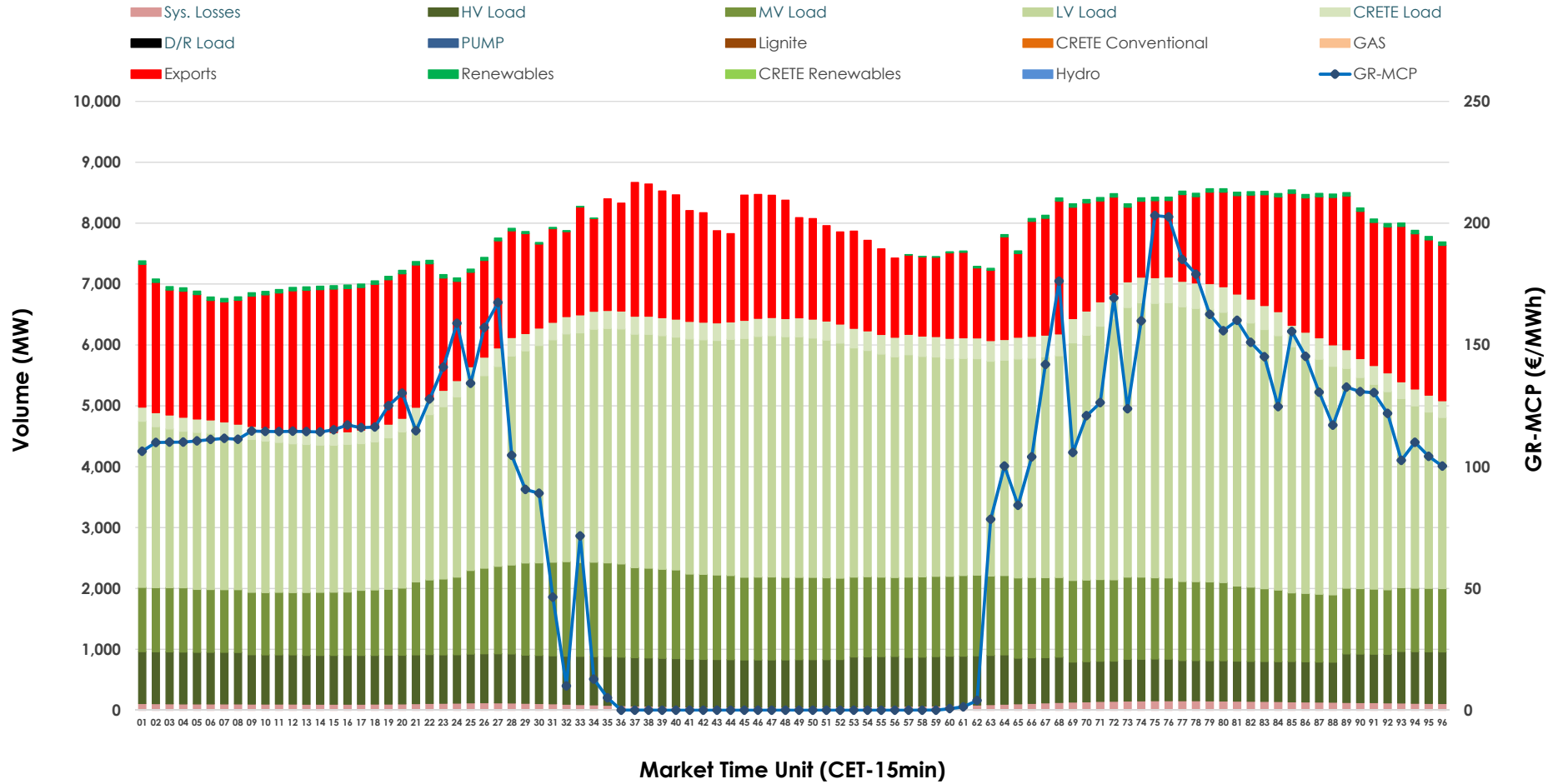


# Day-Ahead Market Outlook

06.03.2026 Day-Ahead Market - Sell



### 06.03.2026 Day-Ahead Market - Buy



### GR Bidding Zone Weekly Figures

Delivery Day	28.02	01.03	02.03	03.03	04.03	05.03	06.03
	👇 -21%	👇 -23%	👆 100%	👆 32%	👇 -4%	👆 3%	👇 -17%
<b>Avg.MCP (€/MWh)</b>	52.12	40.11	80.04	105.79	102.04	105.57	87.16
<b>Max.MCP (€/MWh)</b>	105.16	112.24	205.76	224.94	261.83	217.72	203.10
<b>Min.MCP (€/MWh)</b>	-0.04	-1.03	0.00	9.90	0.01	0.79	0.00
	👇 -7%	➡ -1%	👆 3%	👆 3%	👆 2%	👇 -2%	👇 -4%
<b>Tot.Vol(GWh)</b>	371.47	369.53	381.72	391.40	400.49	393.19	375.71

### Trades by Order Type

Delivery Day		28.02	01.03	02.03	03.03	04.03	05.03	06.03	
<b>Ord Price Type</b>		<b>Sell &amp; Buy Trades in (GWh) per Price Type</b>							<b>(%)</b>
<b>PPT</b>	(S)	113.204	110.143	97.023	93.316	92.023	84.357	88.406	47.06%
<b>HBD</b>	(S)	56.490	60.318	64.656	66.501	72.545	68.571	70.555	37.56%
<b>BLK</b>	(S)	16.041	14.306	27.861	33.700	35.572	43.620	28.667	15.26%
<b>CPL</b>	(S)	0.000	0.000	1.320	2.182	0.106	0.050	0.226	0.12%
<b>PPT</b>	(B)	13.841	12.531	12.663	12.979	12.356	12.083	13.638	7.26%
<b>HBD</b>	(B)	138.903	130.663	144.885	144.065	145.411	144.972	144.877	77.12%
<b>BLK</b>	(B)	0.000	0.000	0.000	0.000	0.000	0.000	0.000	0.00%
<b>CPL</b>	(B)	32.991	41.573	33.312	38.654	42.479	39.542	29.338	15.62%
		<b>Sell &amp; Buy Orders Traded per Price Type</b>							<b>(%)</b>
<b>PPT</b>	(S)	2360	2304	2276	2284	2119	1990	2001	40.64%
<b>HBD</b>	(S)	2414	2254	2788	2973	2968	3040	2910	59.10%
<b>BLK</b>	(S)	7	5	12	13	13	15	13	0.26%
<b>PPT</b>	(B)	2317	2301	2187	2194	2196	2224	2268	36.01%
<b>HBD</b>	(B)	4039	4038	3969	3908	3999	4023	4030	63.99%
<b>BLK</b>	(B)	0	0	0	0	0	0	0	0.00%

**MCP** Market Clearing Price (€/MWh)  
**PPT** Priority Price-Taking  
**HBD** Hybrid  
**BLK** Block  
**CPL** Market Coupling Flow

### Trade's Volume Mix

		Sell - MWh	Buy - MWh	
<b>Lignite</b>	(2.7%)	5,151	0	(0.0%)
<b>Crete Conv.</b>	(0.0%)	0	0	(0.0%)
<b>Gas</b>	(31.9%)	59,882	0	(0.0%)
<b>Hydro</b>	(18.5%)	34,696	0	(0.0%)
<b>Imports</b>	(3.2%)	5,983		
<b>RES</b>	(43.0%)	80,861	866	(0.5%)
<b>Crete RES</b>	(0.7%)	1,280	0	(0.0%)
<b>HV Load</b>	(0.0%)	0	18,580	(9.9%)
<b>MV Load</b>	(0.0%)	0	30,198	(16.1%)
<b>LV Load</b>	(0.0%)	0	83,637	(44.5%)
<b>Crete Load</b>	(0.0%)	0	7,371	(3.9%)
<b>Pumping</b>	(0.0%)	0	0	(0.0%)
<b>Exports</b>			44,731	(23.8%)
<b>Sys.Losses</b>	(0.0%)	0	2,471	(1.3%)
<b>D/R Load</b>	(0.0%)	0	0	(0.0%)

