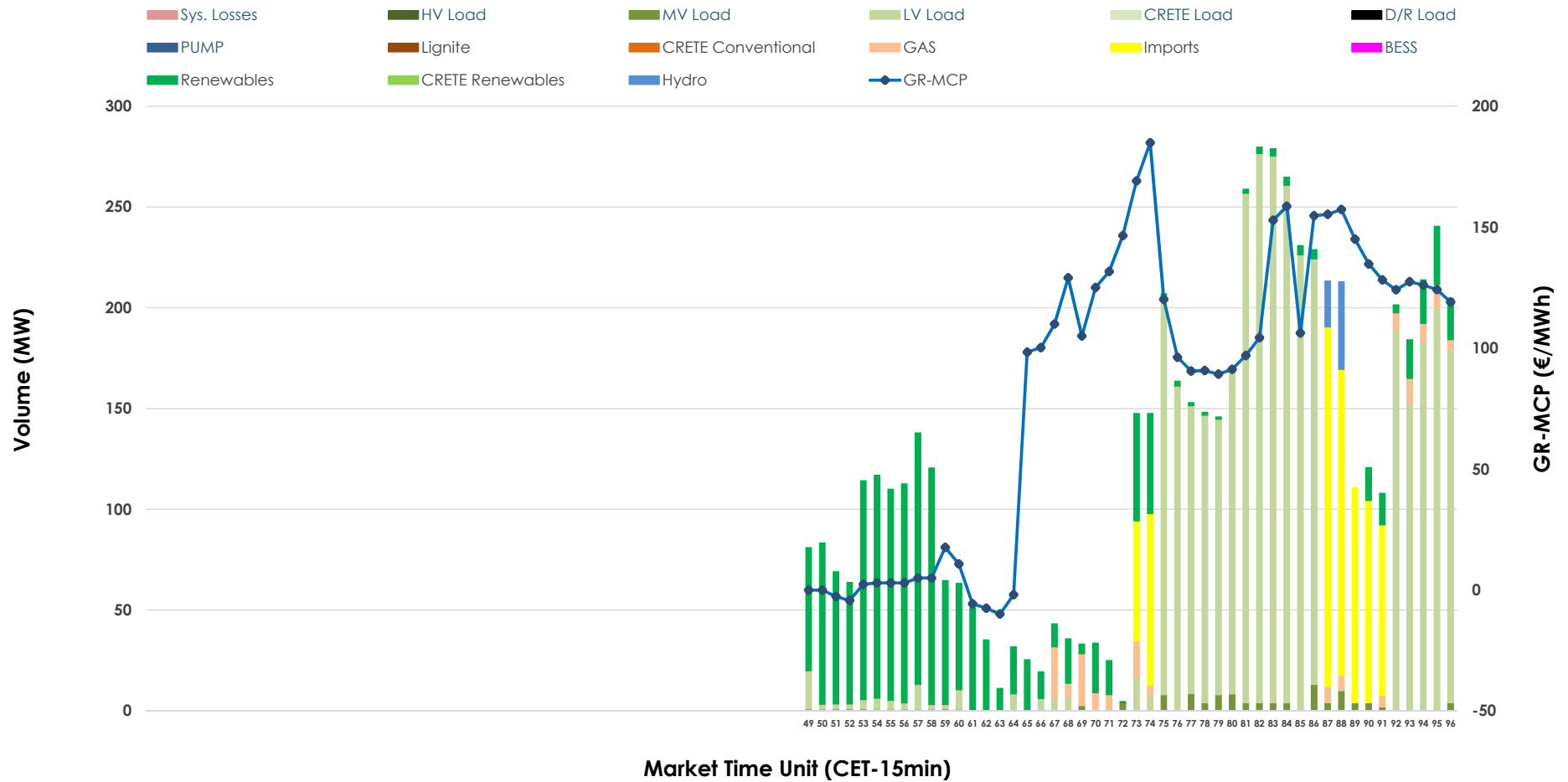


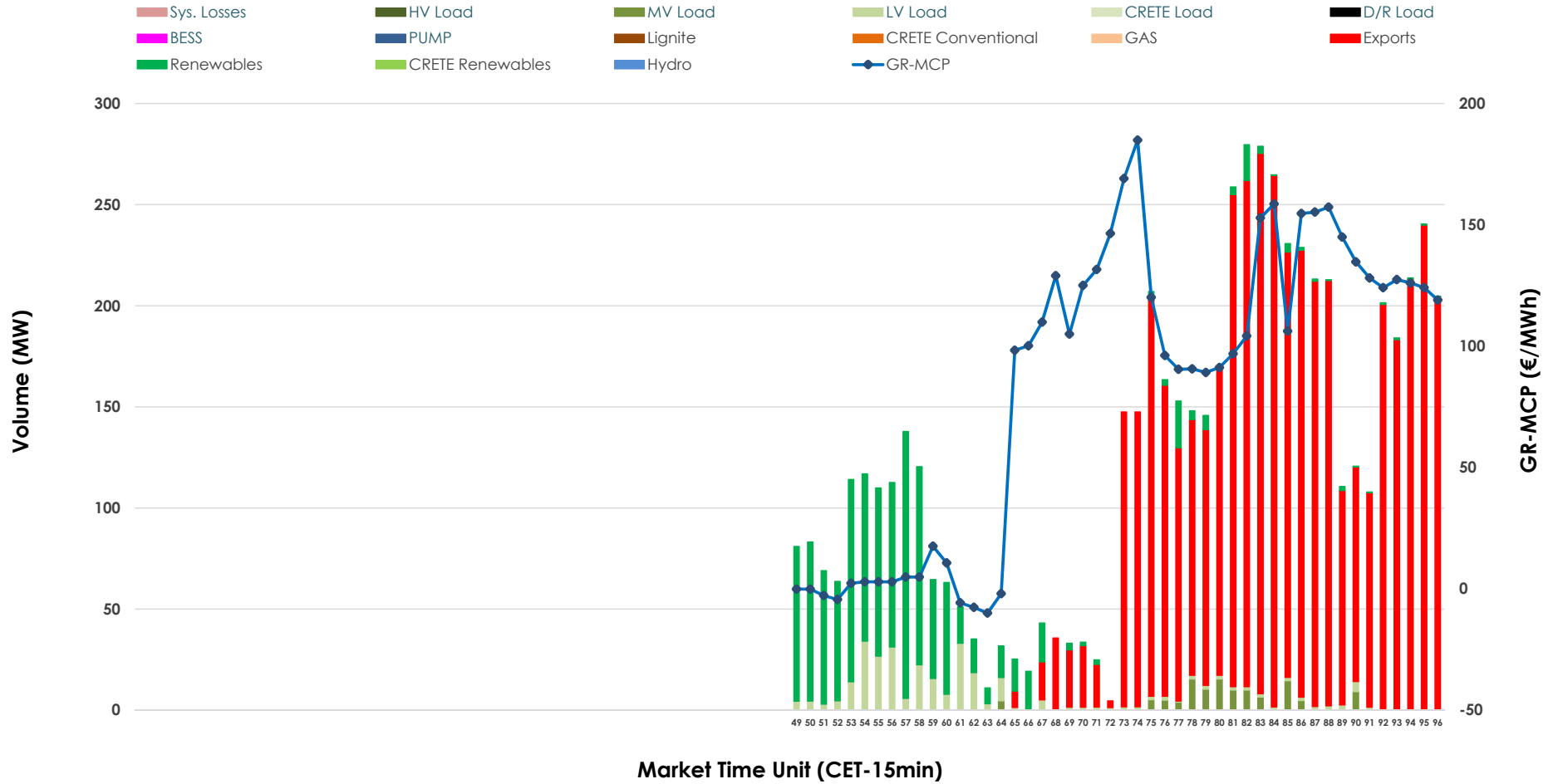


# IDA '3' Market Outlook

10.04.2026 IDA '3' Market - Sell



### 10.04.2026 IDA '3' Market - Buy



### GR Bidding Zone Weekly Figures

Delivery Day	04.04	05.04	06.04	07.04	08.04	09.04	10.04
	↓ -65%	↓ -54%	↑ 102%	↑ 44%	↔ 21%	↔ 10%	→ 0%
<b>Avg.MCP (€/MWh)</b>	46.59	21.49	43.45	62.41	75.60	83.16	83.51
<b>Max.MCP (€/MWh)</b>	129.90	97.54	191.43	184.28	186.48	186.44	184.91
<b>Min.MCP (€/MWh)</b>	-11.64	-65.92	-123.91	-48.10	-20.01	-15.20	-9.97
	↘ -30%	↓ -69%	↑ 115%	↘ -14%	↔ 23%	↔ 13%	↑ 54%
<b>Tot.Vol(GWh)</b>	2.49	0.77	1.65	1.43	1.76	1.99	3.06

### Trades by Order Type

Delivery Day		04.04	05.04	06.04	07.04	08.04	09.04	10.04	
Ord Price Type		Sell & Buy Trades in (GWh) per Price Type							(%)
<b>PPT</b>	(S)	0.000	0.000	0.000	0.000	0.000	0.000	0.000	0.00%
<b>HBD</b>	(S)	1.245	0.338	0.322	0.601	0.493	0.819	1.338	87.47%
<b>BLK</b>	(S)	0.000	0.000	0.000	0.000	0.000	0.000	0.000	0.00%
<b>CPL</b>	(S)	0.000	0.046	0.503	0.112	0.386	0.177	0.192	12.53%
<b>PPT</b>	(B)	0.000	0.000	0.000	0.000	0.000	0.000	0.000	0.00%
<b>HBD</b>	(B)	0.126	0.200	0.768	0.321	0.548	0.173	0.392	25.61%
<b>BLK</b>	(B)	0.000	0.000	0.000	0.000	0.000	0.000	0.000	0.00%
<b>CPL</b>	(B)	1.120	0.184	0.057	0.392	0.330	0.823	1.138	74.39%
		Sell & Buy Orders Traded per Price Type							(%)
<b>PPT</b>	(S)	0	0	0	0	0	0	0	0.00%
<b>HBD</b>	(S)	206	130	65	141	206	257	176	100.00%
<b>BLK</b>	(S)	0	0	0	0	0	0	0	0.00%
<b>PPT</b>	(B)	0	0	0	0	0	0	0	0.00%
<b>HBD</b>	(B)	112	130	197	112	154	112	131	100.00%
<b>BLK</b>	(B)	0	0	0	0	0	0	0	0.00%

- MCP** Market Clearing Price (€/MWh)
- PPT** Priority Price-Taking
- HBD** Hybrid
- BLK** Block
- CPL** Market Coupling Flow

### Trade's Volume Mix

	Sell - MWh	Buy - MWh	
<b>Lignite</b> (0.0%)	0	0	(0.0%)
<b>Crete Conv.</b> (0.0%)	0	0	(0.0%)
<b>Gas</b> (2.7%)	42	0	(0.0%)
<b>Hydro</b> (1.1%)	17	0	(0.0%)
<b>Imports</b> (12.5%)	192		
<b>RES</b> (25.4%)	389	291	(19.0%)
<b>Crete RES</b> (0.0%)	0	0	(0.0%)
<b>BESS</b> (0.0%)	0	0	(0.0%)
<b>HV Load</b> (0.0%)	0	0	(0.0%)
<b>MV Load</b> (1.8%)	28	29	(1.9%)
<b>LV Load</b> (56.4%)	863	72	(4.7%)
<b>Crete Load</b> (0.0%)	0	0	(0.0%)
<b>Pumping</b> (0.0%)	0	0	(0.0%)
<b>Exports</b>		1,138	(74.4%)
<b>Sys.Losses</b> (0.0%)	0	0	(0.0%)
<b>D/R Load</b> (0.0%)	0	0	(0.0%)

