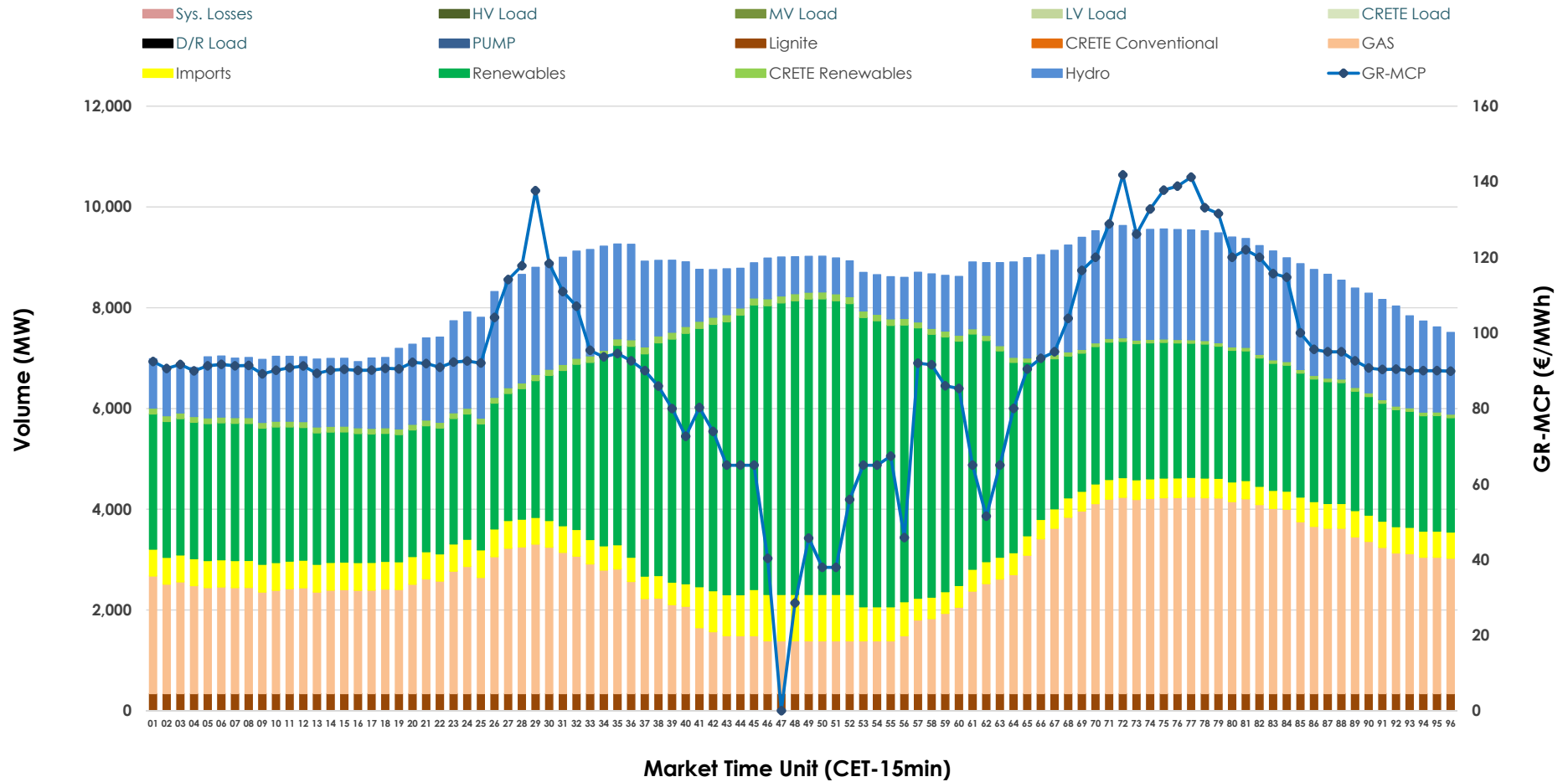


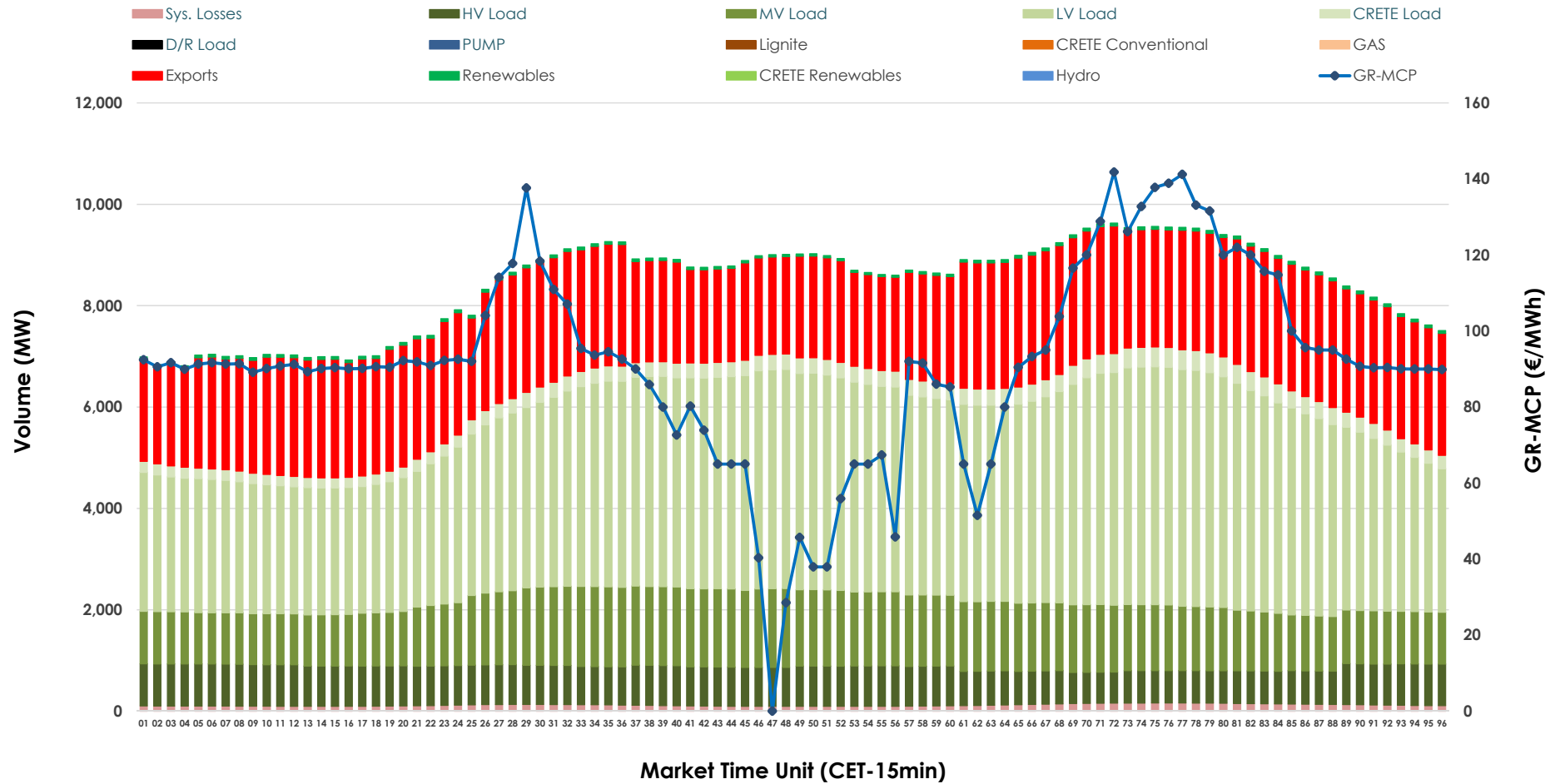


Day-Ahead Market Outlook

13.02.2026 Day-Ahead Market - Sell



13.02.2026 Day-Ahead Market - Buy



GR Bidding Zone Weekly Figures

Delivery Day	07.02	08.02	09.02	10.02	11.02	12.02	13.02
	👇 -28%	👆 26%	👆 50%	👇 -10%	👇 -11%	👇 -19%	👆 9%
Avg.MCP (€/MWh)	69.15	87.19	130.53	117.00	103.57	83.74	91.43
Max.MCP (€/MWh)	138.17	137.01	217.65	183.80	145.00	113.10	141.81
Min.MCP (€/MWh)	-0.10	0.01	96.06	89.31	35.29	0.01	0.01
	👇 -6%	👇 -4%	👆 4%	👆 5%	➡ 0%	👆 3%	👇 -4%
Tot.Vol(GWh)	387.98	372.80	387.84	407.28	409.25	420.46	404.98

Trades by Order Type

Delivery Day		07.02	08.02	09.02	10.02	11.02	12.02	13.02	
Ord Price Type		Sell & Buy Trades in (GWh) per Price Type							(%)
PPT	(S)	97.391	90.104	88.222	95.796	102.018	115.484	104.129	51.42%
HBD	(S)	75.676	70.823	62.341	69.091	66.237	72.762	68.013	33.59%
BLK	(S)	20.926	25.473	40.788	36.594	35.597	21.985	28.714	14.18%
CPL	(S)	0.000	0.000	2.568	2.161	0.771	0.000	1.634	0.81%
PPT	(B)	13.223	13.616	13.693	13.846	13.499	13.165	13.224	6.53%
HBD	(B)	135.733	132.020	145.360	150.538	150.234	150.839	146.580	72.39%
BLK	(B)	0.000	0.000	0.000	0.000	0.000	0.000	0.000	0.00%
CPL	(B)	45.036	40.764	34.865	39.257	40.890	46.227	42.686	21.08%
		Sell & Buy Orders Traded per Price Type							(%)
PPT	(S)	2220	2129	2318	2423	2522	2454	2309	45.00%
HBD	(S)	2348	2697	3008	2939	2839	2701	2811	54.78%
BLK	(S)	8	11	12	8	10	13	11	0.21%
PPT	(B)	2356	2334	2236	2234	2218	2237	2231	35.74%
HBD	(B)	4294	4200	3870	4029	4018	4097	4012	64.26%
BLK	(B)	0	0	0	0	0	0	0	0.00%

MCP Market Clearing Price (€/MWh)
PPT Priority Price-Taking
HBD Hybrid
BLK Block
CPL Market Coupling Flow

Trade's Volume Mix

		Sell - MWh	Buy - MWh	
Lignite	(4.0%)	8,160	0	(0.0%)
Crete Conv.	(0.0%)	0	0	(0.0%)
Gas	(28.8%)	58,334	0	(0.0%)
Hydro	(18.8%)	38,106	0	(0.0%)
Imports	(6.4%)	12,920		
RES	(40.7%)	82,433	1,242	(0.6%)
Crete RES	(1.3%)	2,538	0	(0.0%)
HV Load	(0.0%)	0	18,027	(8.9%)
MV Load	(0.0%)	0	30,836	(15.2%)
LV Load	(0.0%)	0	88,071	(43.5%)
Crete Load	(0.0%)	0	7,057	(3.5%)
Pumping	(0.0%)	0	0	(0.0%)
Exports			54,417	(26.9%)
Sys.Losses	(0.0%)	0	2,841	(1.4%)
D/R Load	(0.0%)	0	0	(0.0%)

