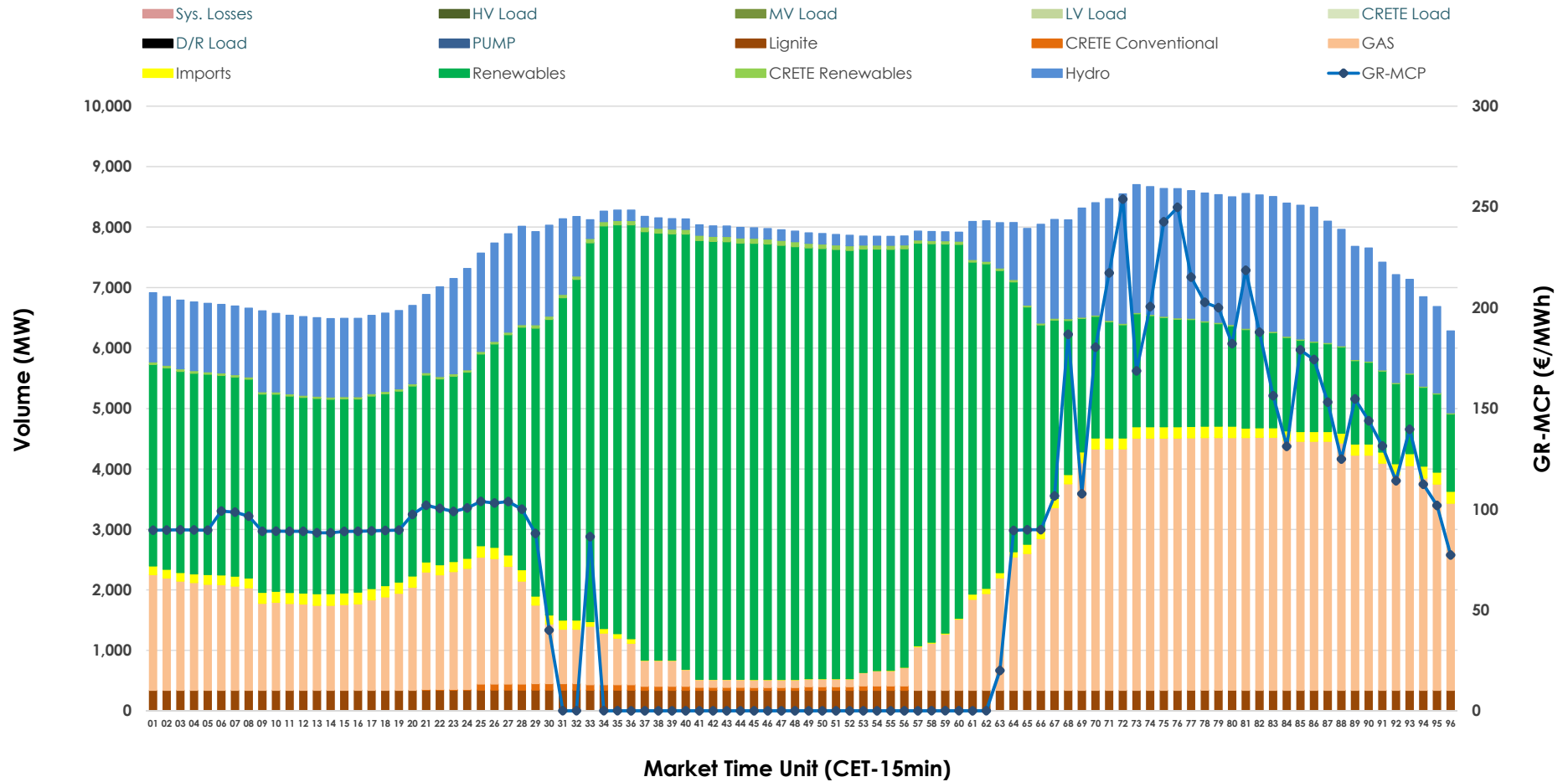


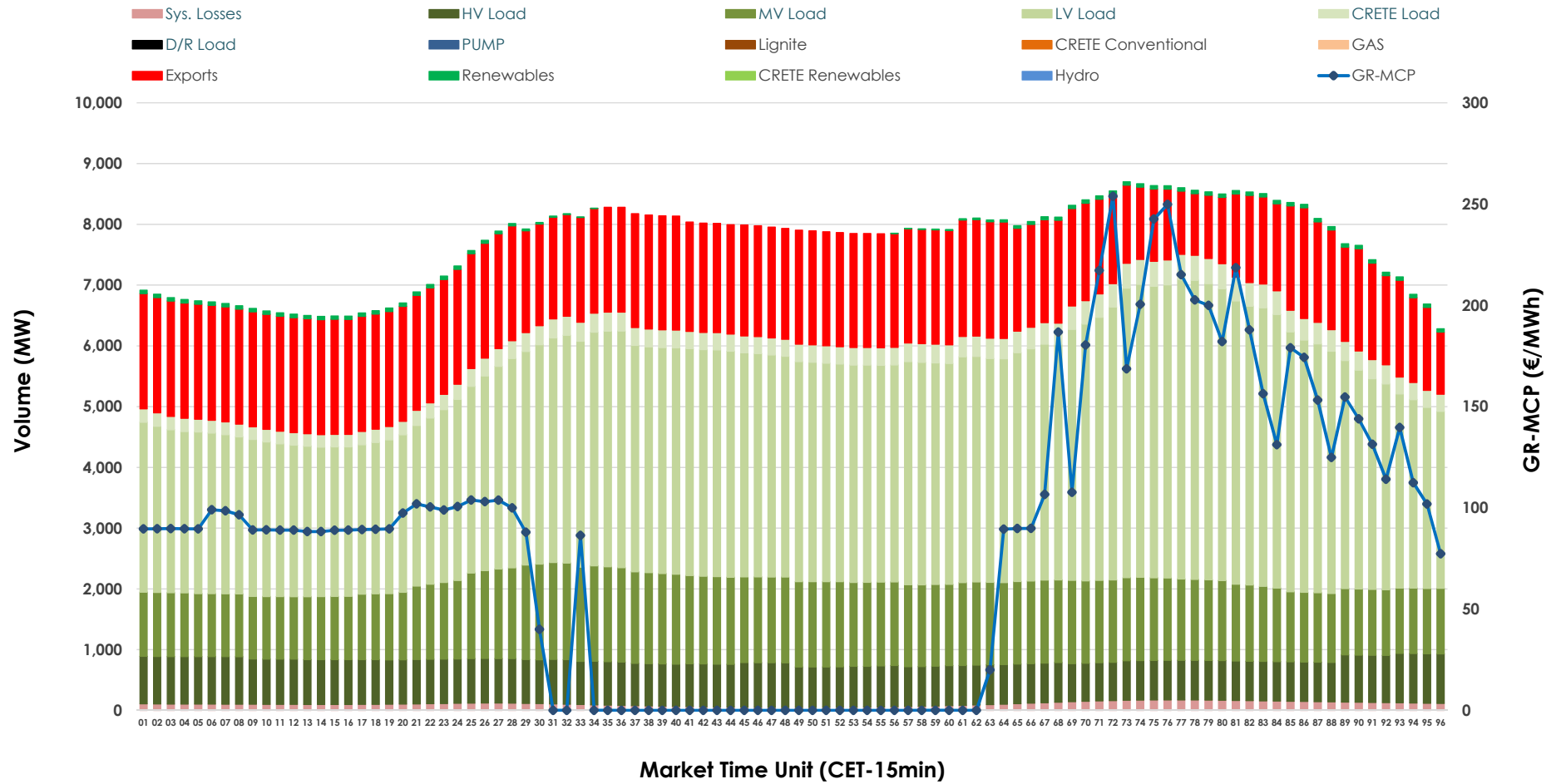


# Day-Ahead Market Outlook

## 10.03.2026 Day-Ahead Market - Sell



### 10.03.2026 Day-Ahead Market - Buy



### GR Bidding Zone Weekly Figures

Delivery Day	04.03	05.03	06.03	07.03	08.03	09.03	10.03
	↘ -4%	↗ 3%	↘ -17%	↘ -4%	↘ -2%	↗ 1%	↗ 2%
<b>Avg.MCP (€/MWh)</b>	102.04	105.57	87.16	83.96	82.31	82.94	84.90
<b>Max.MCP (€/MWh)</b>	261.83	217.72	203.10	168.31	172.04	247.48	253.89
<b>Min.MCP (€/MWh)</b>	0.01	0.79	0.00	-3.65	-1.83	-0.01	0.00
	↗ 2%	↘ -2%	↘ -4%	↘ -2%	↘ -5%	↗ 7%	↘ -2%
<b>Tot.Vol(GWh)</b>	400.49	393.19	375.71	368.18	351.54	377.07	369.77

### Trades by Order Type

Delivery Day		04.03	05.03	06.03	07.03	08.03	09.03	10.03	
<b>Ord Price Type</b>		<b>Sell &amp; Buy Trades in (GWh) per Price Type</b>							<b>(%)</b>
<b>PPT</b>	(S)	92.023	84.357	88.406	94.504	93.458	103.168	92.307	49.93%
<b>HBD</b>	(S)	72.545	68.571	70.555	63.366	60.465	72.209	67.169	36.33%
<b>BLK</b>	(S)	35.572	43.620	28.667	25.786	21.848	13.159	25.386	13.73%
<b>CPL</b>	(S)	0.106	0.050	0.226	0.435	0.000	0.000	0.022	0.01%
<b>PPT</b>	(B)	12.356	12.083	13.638	12.736	12.023	13.216	12.949	7.00%
<b>HBD</b>	(B)	145.411	144.972	144.877	133.811	126.370	140.244	142.529	77.09%
<b>BLK</b>	(B)	0.000	0.000	0.000	0.000	0.000	0.000	0.000	0.00%
<b>CPL</b>	(B)	42.479	39.542	29.338	37.545	37.378	35.075	29.406	15.90%
		<b>Sell &amp; Buy Orders Traded per Price Type</b>							<b>(%)</b>
<b>PPT</b>	(S)	2119	1990	2001	2063	2035	2104	2050	44.81%
<b>HBD</b>	(S)	2968	3040	2910	2647	2482	2558	2512	54.91%
<b>BLK</b>	(S)	13	15	13	12	11	4	13	0.28%
<b>PPT</b>	(B)	2196	2224	2268	2377	2257	2354	2339	36.46%
<b>HBD</b>	(B)	3999	4023	4030	3907	3760	4001	4076	63.54%
<b>BLK</b>	(B)	0	0	0	0	0	0	0	0.00%

**MCP** Market Clearing Price (€/MWh)  
**PPT** Priority Price-Taking  
**HBD** Hybrid  
**BLK** Block  
**CPL** Market Coupling Flow

### Trade's Volume Mix

		Sell - MWh	Buy - MWh	
<b>Lignite</b>	(4.4%)	8,169	0	(0.0%)
<b>Crete Conv.</b>	(0.3%)	605	0	(0.0%)
<b>Gas</b>	(26.0%)	48,057	0	(0.0%)
<b>Hydro</b>	(15.1%)	27,841	0	(0.0%)
<b>Imports</b>	(1.6%)	2,979		
<b>RES</b>	(52.0%)	96,161	865	(0.5%)
<b>Crete RES</b>	(0.6%)	1,072	0	(0.0%)
<b>HV Load</b>	(0.0%)	0	16,956	(9.2%)
<b>MV Load</b>	(0.0%)	0	30,889	(16.7%)
<b>LV Load</b>	(0.0%)	0	85,167	(46.1%)
<b>Crete Load</b>	(0.0%)	0	7,210	(3.9%)
<b>Pumping</b>	(0.0%)	0	0	(0.0%)
<b>Exports</b>			41,237	(22.3%)
<b>Sys.Losses</b>	(0.0%)	0	2,561	(1.4%)
<b>D/R Load</b>	(0.0%)	0	0	(0.0%)

