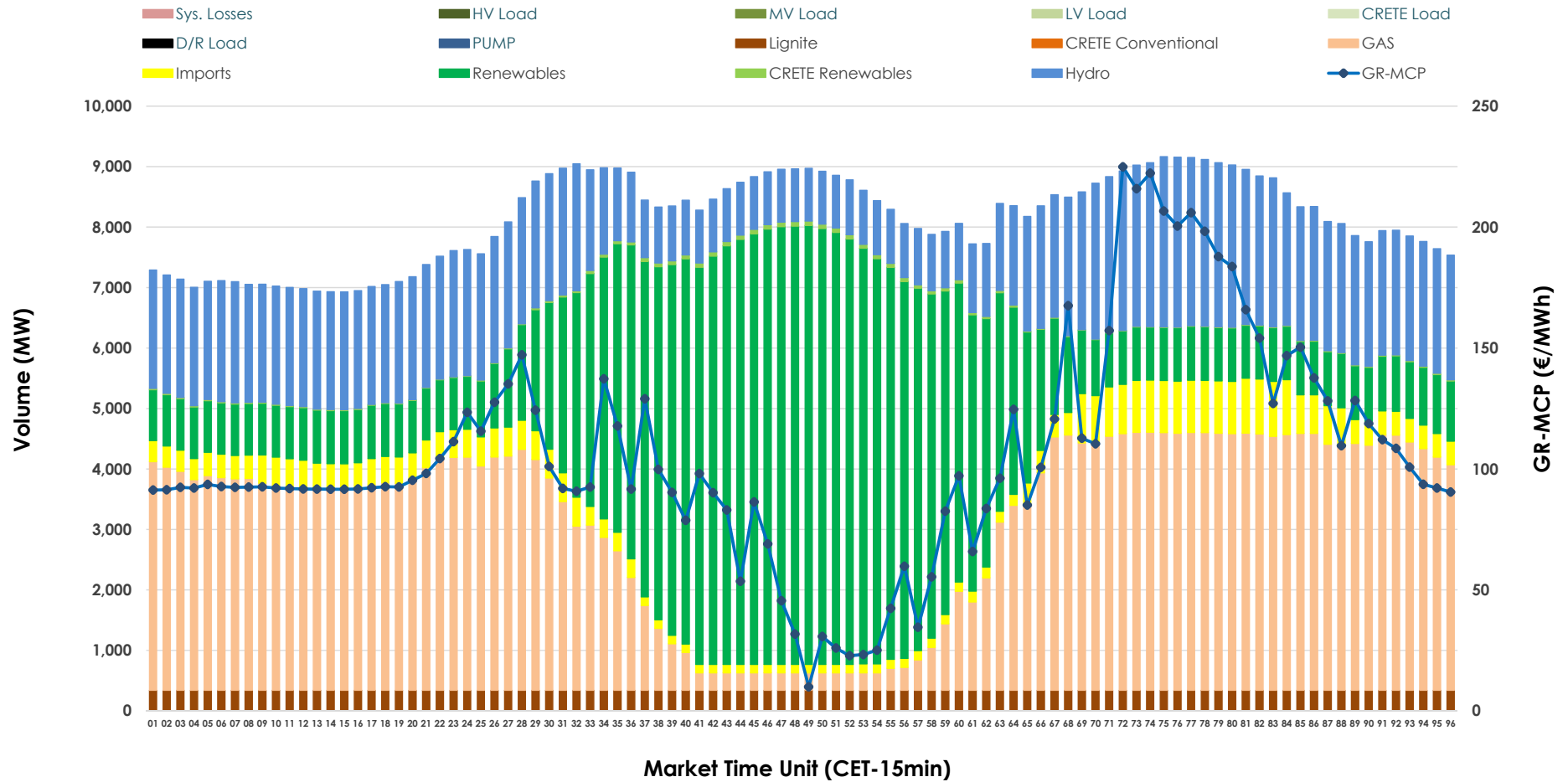


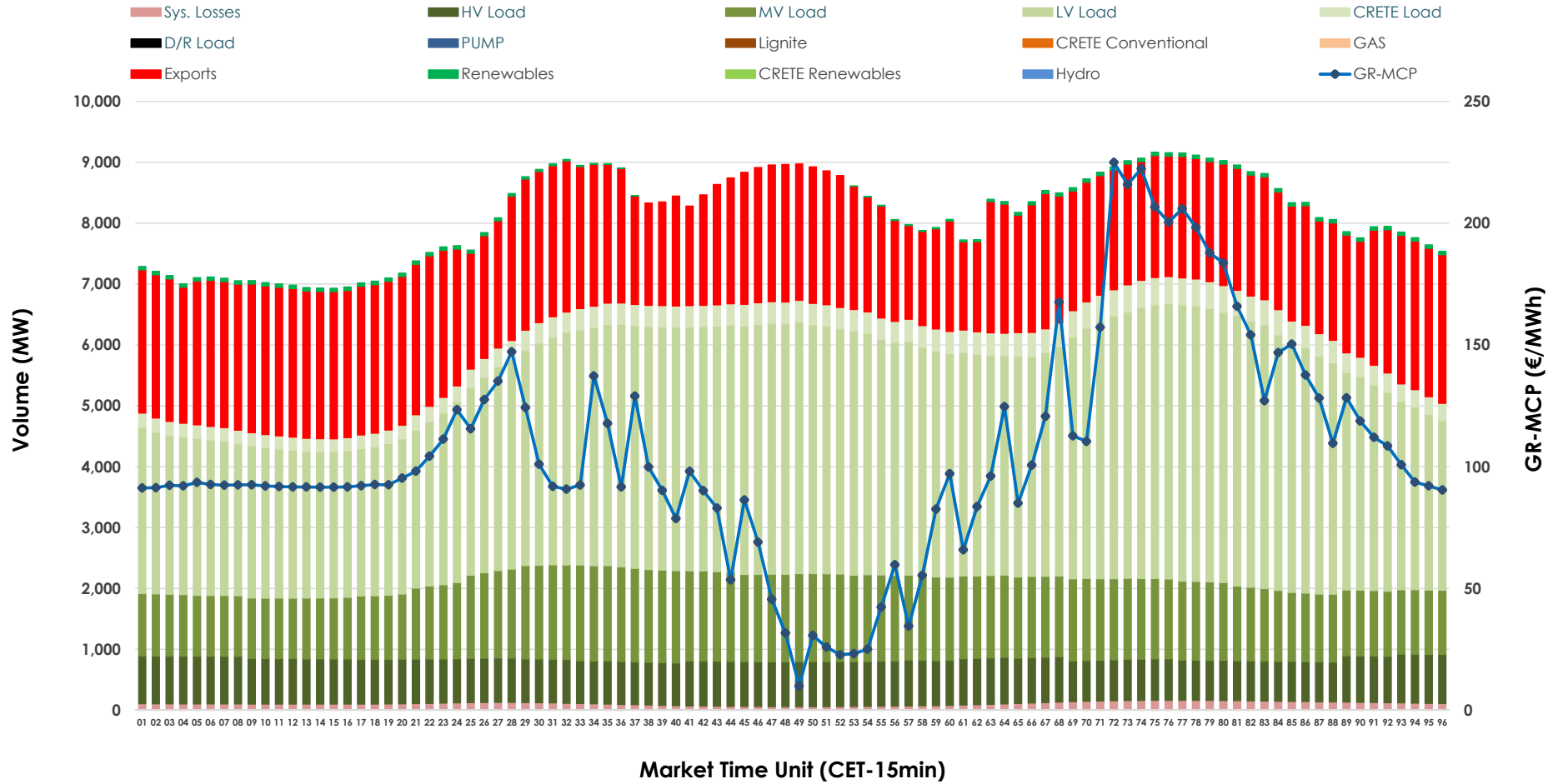


Day-Ahead Market Outlook

03.03.2026 Day-Ahead Market - Sell



03.03.2026 Day-Ahead Market - Buy



GR Bidding Zone Weekly Figures

Delivery Day	25.02	26.02	27.02	28.02	01.03	02.03	03.03
	👇 -16%	👆 5%	👆 15%	👇 -21%	👇 -23%	👆 100%	👆 32%
Avg.MCP (€/MWh)	54.54	57.09	65.66	52.12	40.11	80.04	105.79
Max.MCP (€/MWh)	147.61	129.65	146.17	105.16	112.24	205.76	224.94
Min.MCP (€/MWh)	0.00	-0.01	0.01	-0.04	-1.03	0.00	9.90
	👉 0%	👆 4%	👇 -1%	👇 -7%	👉 -1%	👆 3%	👆 3%
Tot.Vol(GWh)	387.02	403.23	399.06	371.47	369.53	381.72	391.40

Trades by Order Type

Delivery Day		25.02	26.02	27.02	28.02	01.03	02.03	03.03	
Ord Price Type		Sell & Buy Trades in (GWh) per Price Type							(%)
PPT	(S)	106.228	115.405	107.369	113.204	110.143	97.023	93.316	47.68%
HBD	(S)	62.460	64.030	66.550	56.490	60.318	64.656	66.501	33.98%
BLK	(S)	23.405	22.178	25.283	16.041	14.306	27.861	33.700	17.22%
CPL	(S)	1.418	0.000	0.327	0.000	0.000	1.320	2.182	1.11%
PPT	(B)	13.257	13.008	12.878	13.841	12.531	12.663	12.979	6.63%
HBD	(B)	146.689	148.228	150.080	138.903	130.663	144.885	144.065	73.62%
BLK	(B)	0.000	0.000	0.000	0.000	0.000	0.000	0.000	0.00%
CPL	(B)	33.565	40.377	36.571	32.991	41.573	33.312	38.654	19.75%
		Sell & Buy Orders Traded per Price Type							(%)
PPT	(S)	2404	2414	2382	2360	2304	2276	2284	43.34%
HBD	(S)	2410	2446	2859	2414	2254	2788	2973	56.41%
BLK	(S)	9	8	12	7	5	12	13	0.25%
PPT	(B)	2224	2237	2233	2317	2301	2187	2194	35.96%
HBD	(B)	4137	4113	4005	4039	4038	3969	3908	64.04%
BLK	(B)	0	0	0	0	0	0	0	0.00%

MCP Market Clearing Price (€/MWh)
PPT Priority Price-Taking
HBD Hybrid
BLK Block
CPL Market Coupling Flow

Trade's Volume Mix

		Sell - MWh	Buy - MWh	
Lignite	(4.2%)	8,160	0	(0.0%)
Crete Conv.	(0.0%)	0	0	(0.0%)
Gas	(35.2%)	68,921	0	(0.0%)
Hydro	(21.9%)	42,948	0	(0.0%)
Imports	(5.1%)	10,073		
RES	(33.1%)	64,851	913	(0.5%)
Crete RES	(0.4%)	744	0	(0.0%)
HV Load	(0.0%)	0	17,458	(8.9%)
MV Load	(0.0%)	0	30,567	(15.6%)
LV Load	(0.0%)	0	85,113	(43.5%)
Crete Load	(0.0%)	0	7,963	(4.1%)
Pumping	(0.0%)	0	0	(0.0%)
Exports			51,051	(26.1%)
Sys.Losses	(0.0%)	0	2,633	(1.3%)
D/R Load	(0.0%)	0	0	(0.0%)

