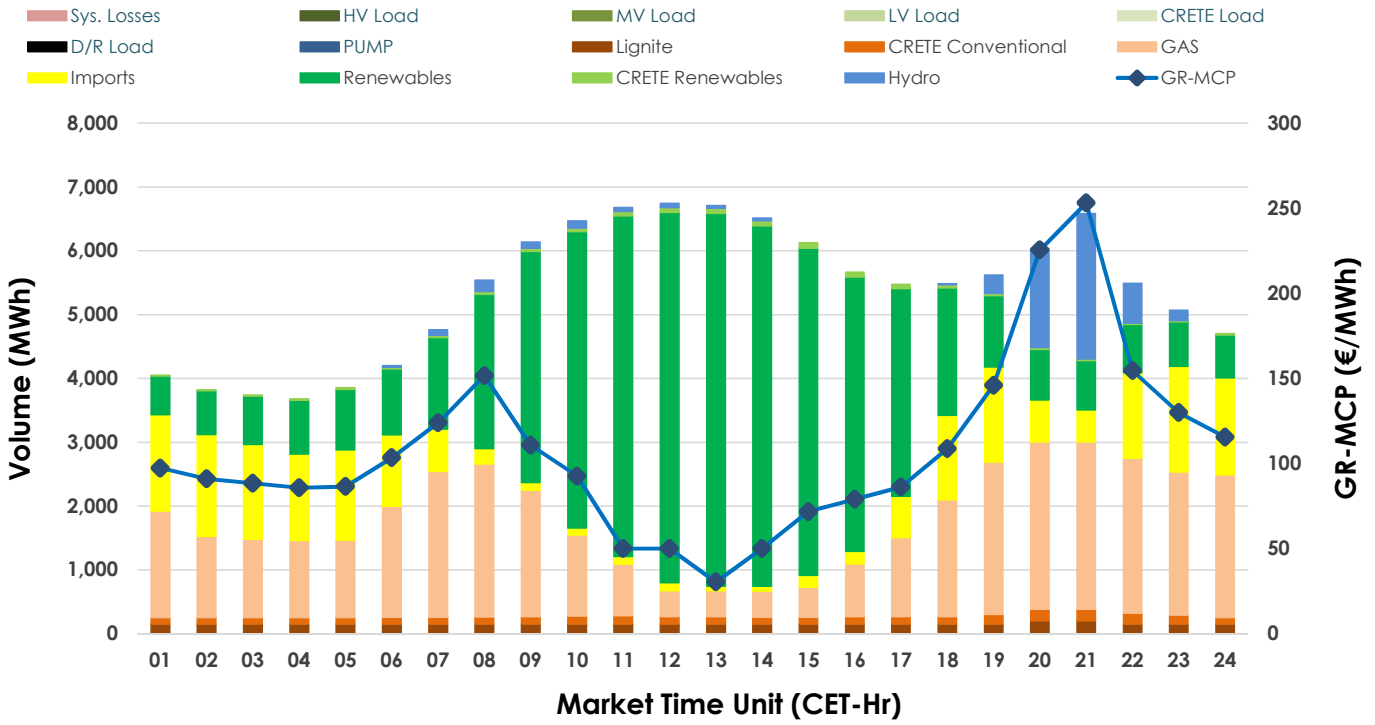
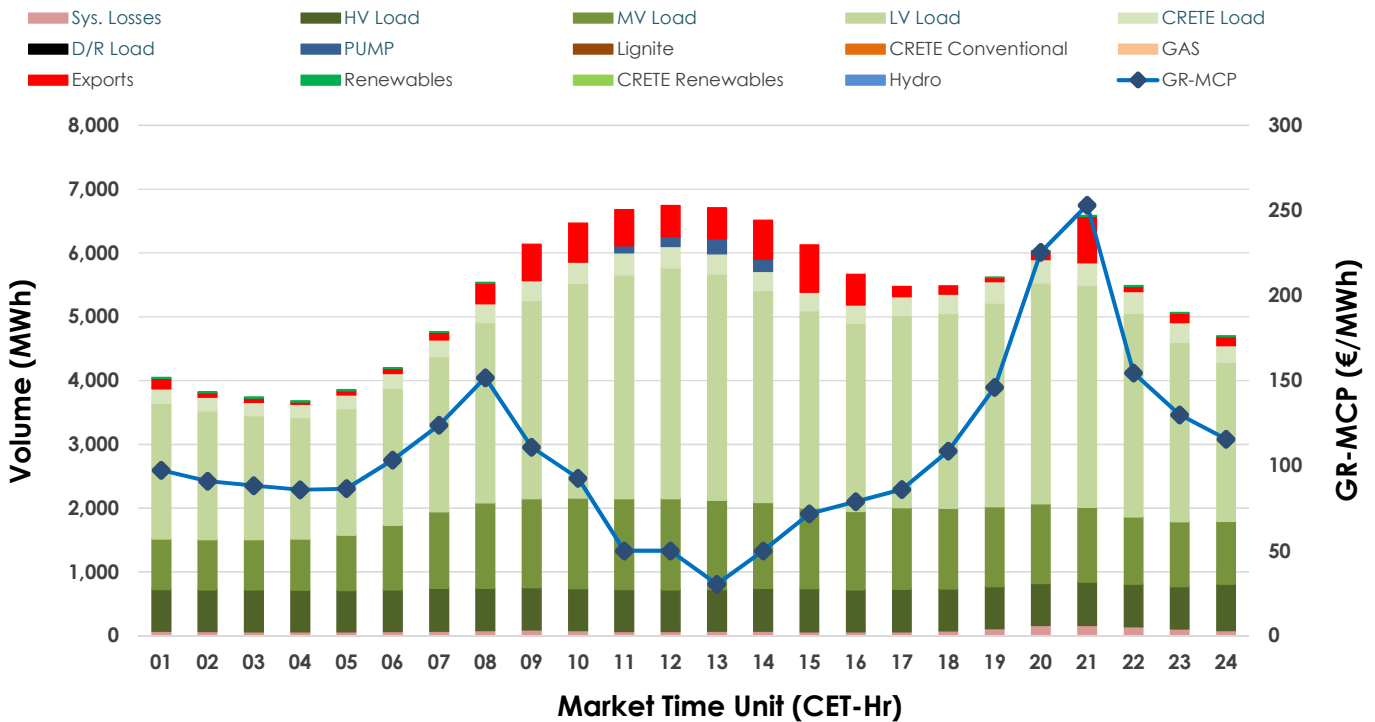


## 22.04.2025 Day-Ahead Market - Sell



## 22.04.2025 Day-Ahead Market - Buy



## GR Bidding Zone Weekly Figures

Delivery Day	16.04	17.04	18.04	19.04	20.04	21.04	22.04
	📉-22%	📉-3%	📉-8%	📉-2%	📉-8%	📈6%	📈53%
Avg.MCP (€/MWh)	83.16	80.67	73.87	72.14	66.48	70.28	107.58
Max.MCP (€/MWh)	167.99	133.88	139.68	175.37	139.41	139.23	253.12
Min.MCP (€/MWh)	0.04	5.11	5.00	0.20	0.00	2.93	30.40
	📈3%	📉-6%	📉-7%	📈1%	📉-13%	📈1%	📈17%
Tot.Vol(GWh)	283.14	266.46	246.85	249.80	217.91	221.09	258.31

## Trades by Order Type

Delivery Day	16.04	17.04	18.04	19.04	20.04	21.04	22.04
Order P.T	Sell & Buy Trades in (GWh) per Price Type						
PPT (S)	39.337	40.426	46.359	41.126	37.296	38.398	40.143
HBD (S)	56.108	52.953	49.302	49.479	40.769	42.350	51.995
BLK (S)	22.720	22.407	18.555	21.703	15.312	16.437	23.711
CPL (S)	23.405	17.444	9.209	12.593	15.578	13.362	13.304
PPT (B)	13.178	12.361	12.512	10.517	10.475	10.654	11.049
HBD (B)	128.391	120.390	108.302	112.678	98.279	98.626	115.755
BLK (B)							
CPL (B)		0.479	2.610	1.706	0.202	1.267	2.350
	Sell & Buy Orders Traded per Price Type						
PPT (S)	404	400	379	392	421	421	475
HBD (S)	903	897	766	794	836	818	898
BLK (S)	121	118	104	121	99	102	134
PPT (B)	613	625	646	573	597	593	578
HBD (B)	1345	1368	1382	1354	1281	1325	1238
BLK (B)							

<b>MCP</b>	Market Clearing Price (€/MWh)
<b>PPT</b>	Priority Price-Taking
<b>HBD</b>	Hybrid
<b>BLK</b>	Block
<b>CPL</b>	Market Coupling Flow

## Trade's Volume Mix

	Sell - MWh	Buy - MWh	
Lignite	(2.9%) 3,700	0	(0.0%)
Crete Conv.	(2.3%) 2,911	0	(0.0%)
Gas	(28.9%) 37,325	0	(0.0%)
Hydro	(4.3%) 5,601	0	(0.0%)
Imports	(15.1%) 19,512		
RES	(45.7%) 59,076	183	(0.1%)
Crete RES	(0.8%) 1,029	0	(0.0%)
HV Load	(0.0%) 0	15,899	(12.3%)
MV Load	(0.0%) 0	27,748	(21.5%)
LV Load	(0.0%) 0	68,519	(53.1%)
Crete Load	(0.0%) 0	6,967	(5.4%)
Pumping	(0.0%) 0	696	(0.5%)
Exports		7,052	(5.5%)
Sys.Losses	(0.0%) 0	2,090	(1.6%)
D/R Load	(0.0%) 0	0	(0.0%)

