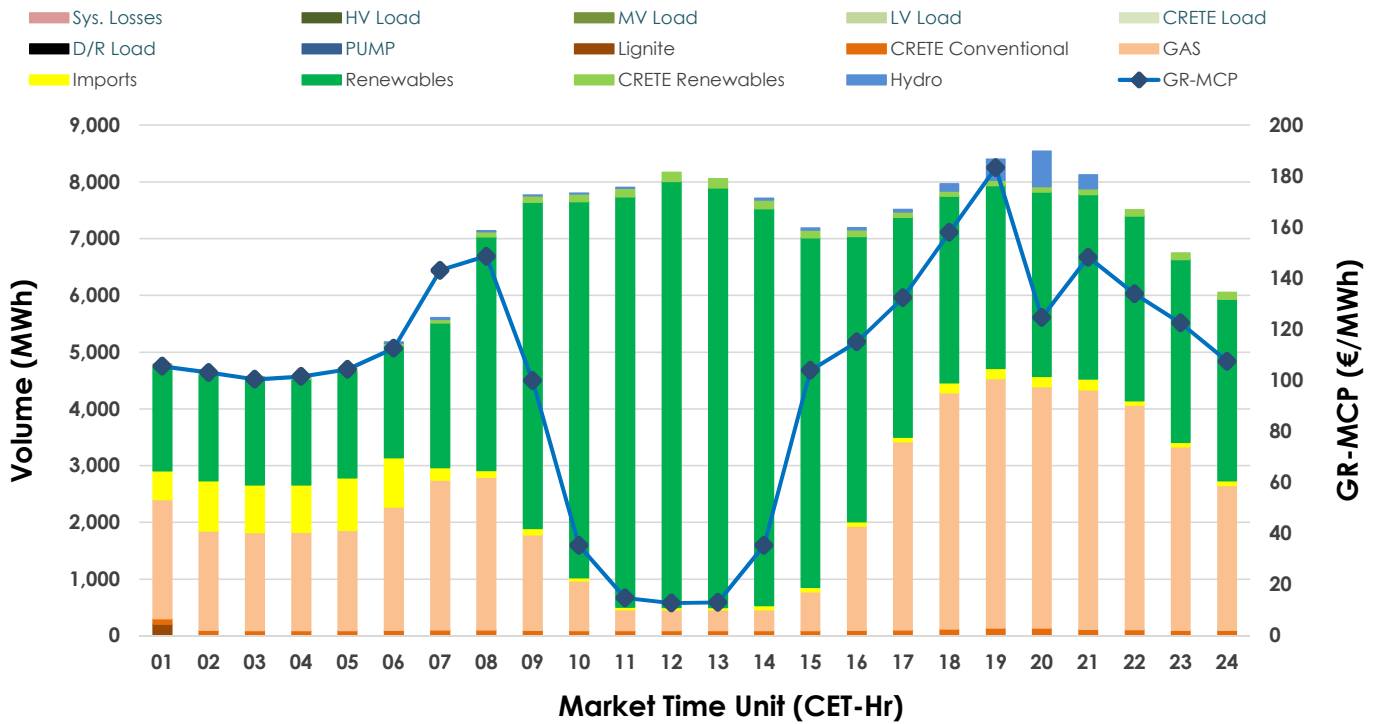
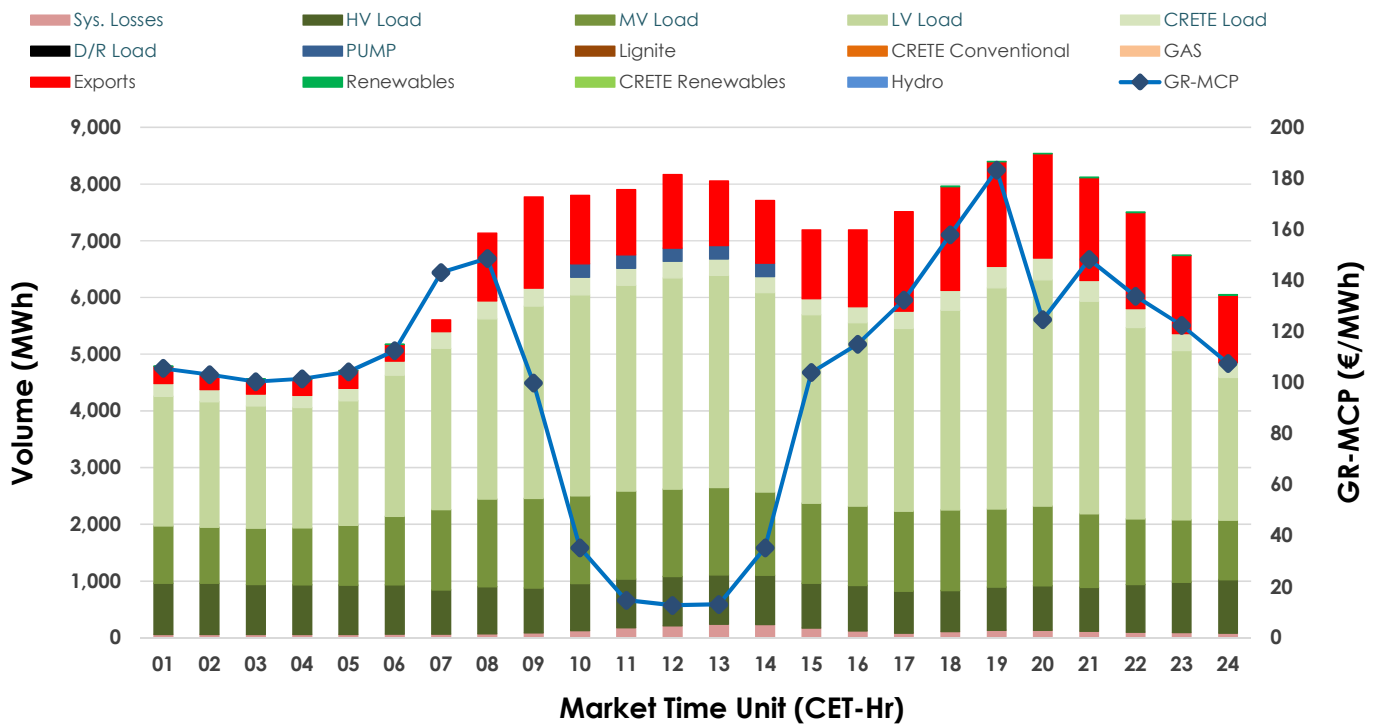


## 11.03.2025 Day-Ahead Market - Sell



## 11.03.2025 Day-Ahead Market - Buy



## GR Bidding Zone Weekly Figures

Delivery Day	05.03	06.03	07.03	08.03	09.03	10.03	11.03
	↘-12%	↗12%	↘-11%	↗1%	↘-23%	↗23%	⇒0%
Avg.MCP (€/MWh)	108.20	121.00	107.75	108.88	83.70	102.76	102.49
Max.MCP (€/MWh)	268.81	270.00	229.94	220.88	155.00	174.80	183.28
Min.MCP (€/MWh)	0.04	0.57	8.02	0.04	0.04	15.00	12.78
	⇒ -1%	↘-10%	↘-5%	↘-8%	↘-7%	↗9%	↗9%
Tot.Vol(GWh)	374.35	338.25	321.38	295.76	275.24	301.07	327.70

## Trades by Order Type

Delivery Day	05.03	06.03	07.03	08.03	09.03	10.03	11.03
Order P.T	Sell & Buy Trades in (GWh) per Price Type						
PPT (S)	76.209	58.584	58.142	46.934	42.573	52.209	63.782
HBD (S)	74.062	66.590	60.824	52.927	47.618	53.336	63.451
BLK (S)	36.902	39.990	36.848	38.063	27.612	36.083	32.563
CPL (S)		3.963	4.879	9.954	19.818	8.907	4.054
PPT (B)	18.736	18.693	17.665	15.718	14.868	12.655	13.897
HBD (B)	147.132	146.156	137.856	131.254	121.304	129.829	135.716
BLK (B)							
CPL (B)	21.305	4.278	5.172	0.906	1.449	8.052	14.236
Order P.T	Sell & Buy Orders Traded per Price Type						
PPT (S)	276	366	397	390	432	420	363
HBD (S)	690	847	854	843	862	869	793
BLK (S)	191	208	185	192	145	172	157
PPT (B)	854	820	798	759	755	630	736
HBD (B)	1333	1359	1316	1296	1264	1266	1367
BLK (B)							

<b>MCP</b>	Market Clearing Price (€/MWh)
<b>PPT</b>	Priority Price-Taking
<b>HBD</b>	Hybrid
<b>BLK</b>	Block
<b>CPL</b>	Market Coupling Flow

## Trade's Volume Mix

	Sell - MWh	Buy - MWh	
Lignite	(0.1%) 202	0	(0.0%)
Crete Conv.	(1.4%) 2,371	0	(0.0%)
Gas	(32.5%) 53,332	0	(0.0%)
Hydro	(1.0%) 1,604	0	(0.0%)
Imports	(4.1%) 6,779		
RES	(59.3%) 97,221	122	(0.1%)
Crete RES	(1.4%) 2,341	0	(0.0%)
HV Load	(0.0%) 0	20,023	(12.2%)
MV Load	(0.0%) 0	31,466	(19.2%)
LV Load	(0.0%) 0	74,826	(45.7%)
Crete Load	(0.0%) 0	6,973	(4.3%)
Pumping	(0.0%) 0	1,175	(0.7%)
Exports		26,514	(16.2%)
Sys.Losses	(0.0%) 0	2,751	(1.7%)
D/R Load	(0.0%) 0	0	(0.0%)

