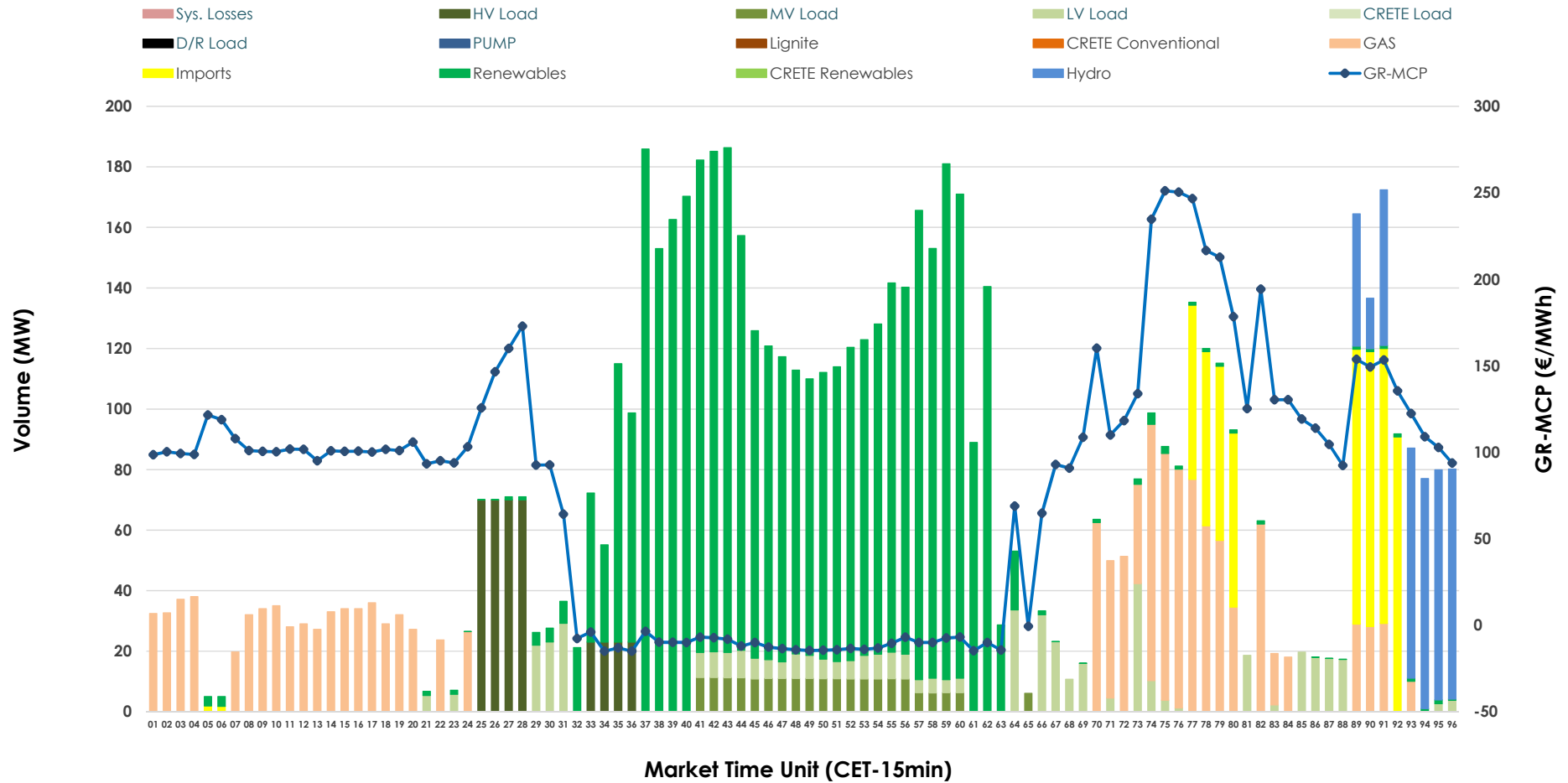


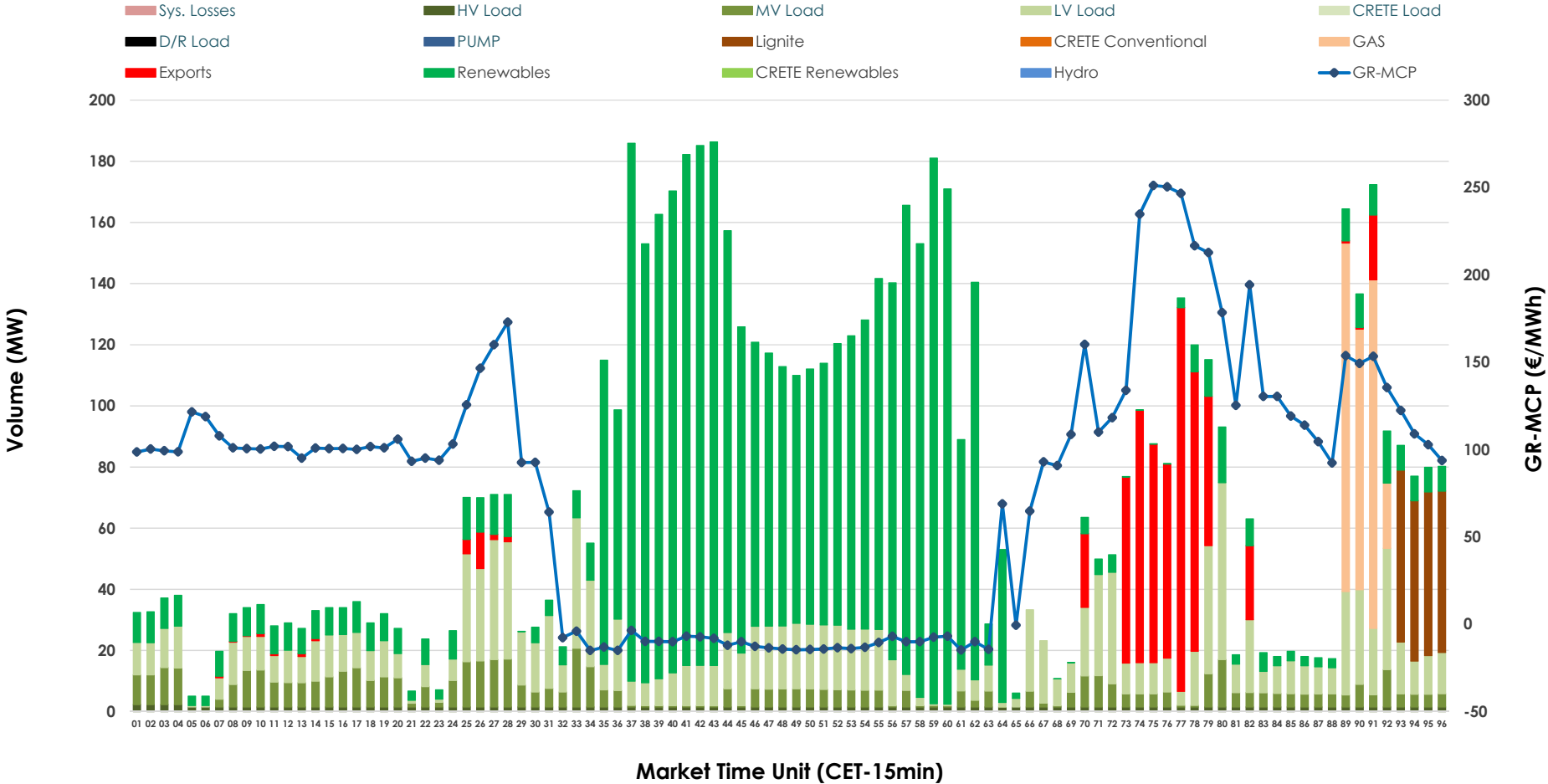


# IDA '1' Market Outlook

09.03.2026 IDA '1' Market - Sell



### 09.03.2026 IDA '1' Market - Buy



### GR Bidding Zone Weekly Figures

Delivery Day	03.03	04.03	05.03	06.03	07.03	08.03	09.03
	↑ 35%	↓ -5%	↔ 3%	↓ -19%	↓ -4%	→ 0%	→ 0%
<b>Avg.MCP (€/MWh)</b>	103.29	97.63	100.31	81.18	77.97	77.99	78.31
<b>Max.MCP (€/MWh)</b>	227.86	261.83	212.70	211.99	161.96	163.76	251.15
<b>Min.MCP (€/MWh)</b>	10.59	-3.04	0.79	-20.04	-18.65	-15.11	-15.00
	↔ 16%	↑ 267%	↓ -78%	↑ 115%	↓ -53%	↓ -14%	↑ 45%
<b>Tot.Vol(GWh)</b>	3.63	13.31	2.92	6.29	2.95	2.53	3.68

### Trades by Order Type

Delivery Day		03.03	04.03	05.03	06.03	07.03	08.03	09.03	
<b>Ord Price Type</b>		<b>Sell &amp; Buy Trades in (GWh) per Price Type</b>							<b>(%)</b>
<b>PPT</b>	(S)	0.000	0.000	0.000	0.000	0.000	0.000	0.000	0.00%
<b>HBD</b>	(S)	1.462	6.633	0.881	2.666	1.263	0.957	1.689	91.88%
<b>BLK</b>	(S)	0.000	0.000	0.000	0.000	0.000	0.000	0.000	0.00%
<b>CPL</b>	(S)	0.351	0.023	0.580	0.481	0.214	0.307	0.149	8.12%
<b>PPT</b>	(B)	0.000	0.000	0.000	0.000	0.000	0.000	0.000	0.00%
<b>HBD</b>	(B)	1.333	6.102	1.383	2.469	1.355	1.173	1.678	91.31%
<b>BLK</b>	(B)	0.000	0.000	0.000	0.000	0.000	0.000	0.000	0.00%
<b>CPL</b>	(B)	0.480	0.555	0.078	0.678	0.123	0.090	0.160	8.69%
		<b>Sell &amp; Buy Orders Traded per Price Type</b>							<b>(%)</b>
<b>PPT</b>	(S)	0	0	0	0	0	0	0	0.00%
<b>HBD</b>	(S)	335	330	239	326	220	64	89	100.00%
<b>BLK</b>	(S)	0	0	0	0	0	0	0	0.00%
<b>PPT</b>	(B)	0	0	0	0	0	0	0	0.00%
<b>HBD</b>	(B)	806	854	929	682	771	840	840	100.00%
<b>BLK</b>	(B)	0	0	0	0	0	0	0	0.00%

**MCP** Market Clearing Price (€/MWh)  
**PPT** Priority Price-Taking  
**HBD** Hybrid  
**BLK** Block  
**CPL** Market Coupling Flow

### Trade's Volume Mix

		Sell - MWh		Buy - MWh	
<b>Lignite</b>	(0.0%)	0	54		(2.9%)
<b>Crete Conv.</b>	(0.0%)	0	0		(0.0%)
<b>Gas</b>	(20.1%)	370	84		(4.6%)
<b>Hydro</b>	(5.7%)	104	0		(0.0%)
<b>Imports</b>	(8.1%)	149			
<b>RES</b>	(51.4%)	945	990		(53.9%)
<b>Crete RES</b>	(0.0%)	0	0		(0.0%)
<b>HV Load</b>	(5.1%)	93	37		(2.0%)
<b>MV Load</b>	(2.8%)	52	143		(7.8%)
<b>LV Load</b>	(6.8%)	125	371		(20.2%)
<b>Crete Load</b>	(0.0%)	0	0		(0.0%)
<b>Pumping</b>	(0.0%)	0	0		(0.0%)
<b>Exports</b>				160	(8.7%)
<b>Sys.Losses</b>	(0.0%)	0	0		(0.0%)
<b>D/R Load</b>	(0.0%)	0	0		(0.0%)

