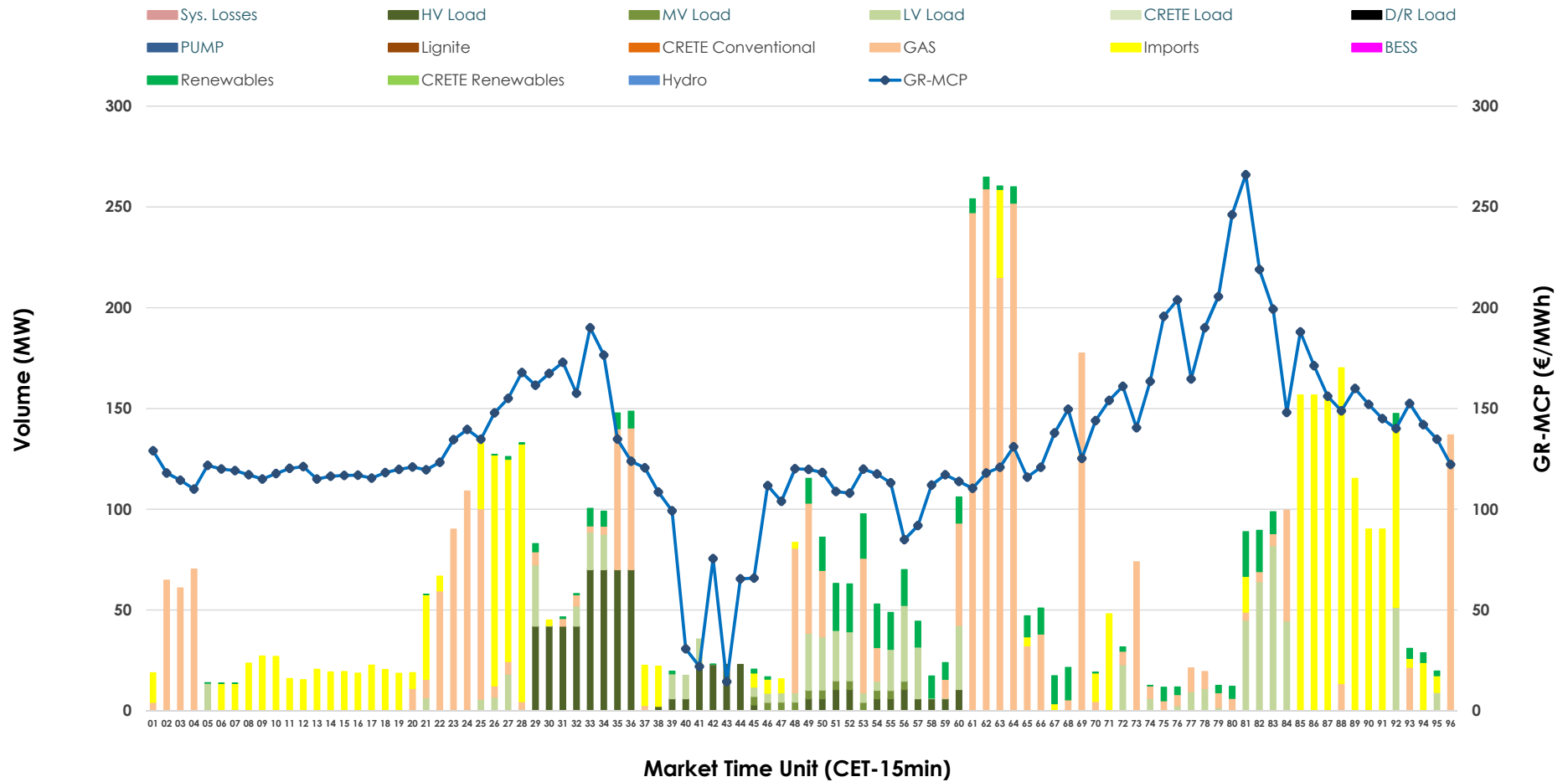


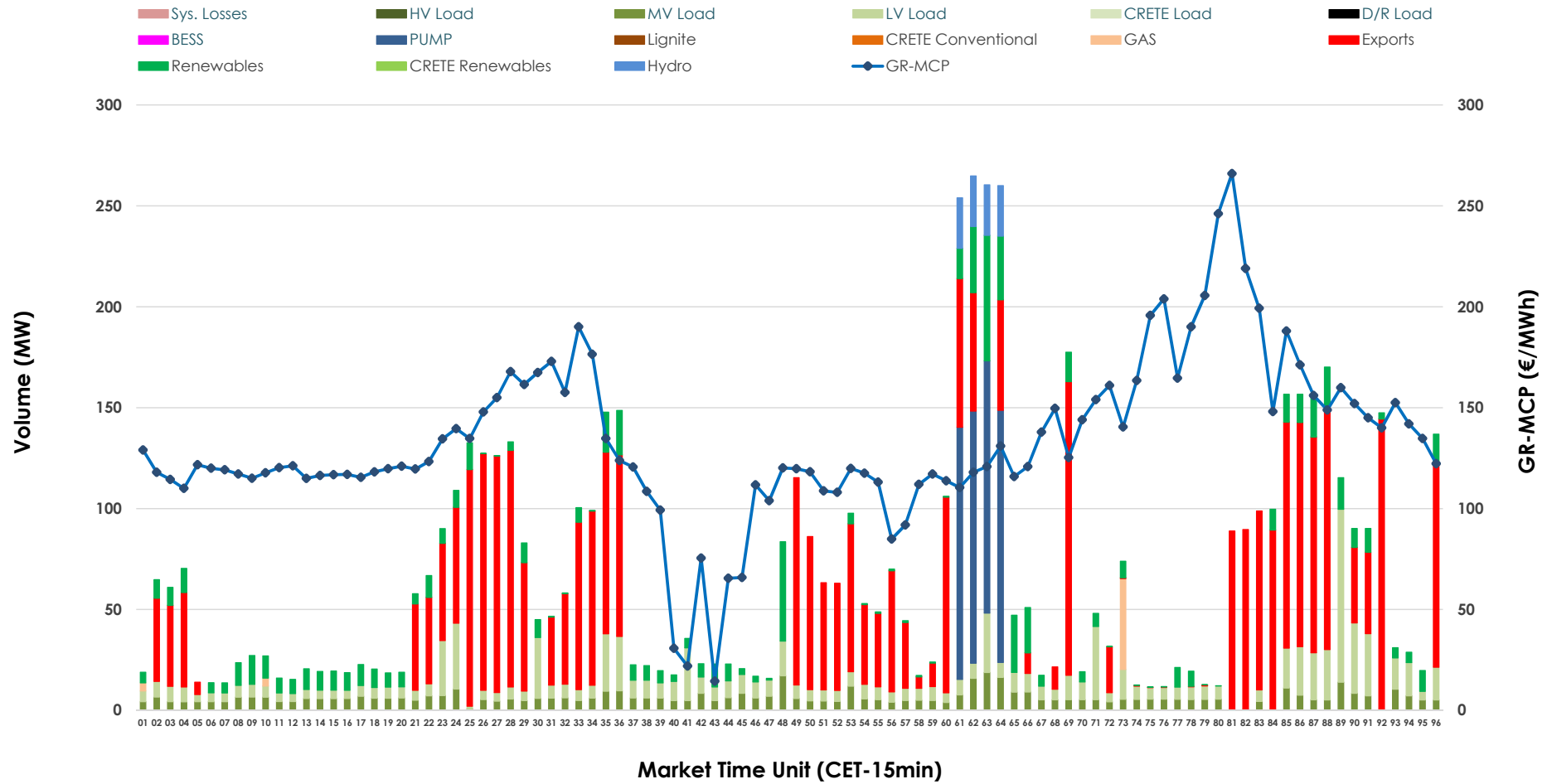


IDA '1' Market Outlook

14.04.2026 IDA '1' Market - Sell



14.04.2026 IDA '1' Market - Buy



GR Bidding Zone Weekly Figures

Delivery Day	08.04	09.04	10.04	11.04	12.04	13.04	14.04
	👇 -7%	👆 20%	👆 3%	👇 -11%	👇 -5%	👆 10%	👆 50%
Avg.MCP (€/MWh)	76.84	92.32	95.36	85.00	80.90	88.91	133.10
Max.MCP (€/MWh)	189.41	192.88	192.88	184.98	160.00	166.41	266.00
Min.MCP (€/MWh)	-17.84	-10.96	-4.00	-9.45	-6.33	-12.71	14.48
	👇 -1%	👆 12%	👇 -20%	👆 9%	👆 29%	👇 -30%	👆 -1%
Tot.Vol(GWh)	3.70	4.14	3.31	3.62	4.68	3.28	3.26

Trades by Order Type

Delivery Day		08.04	09.04	10.04	11.04	12.04	13.04	14.04	
Ord Price Type		Sell & Buy Trades in (GWh) per Price Type							(%)
PPT	(S)	0.000	0.000	0.000	0.000	0.000	0.000	0.000	0.00%
HBD	(S)	1.045	0.954	1.454	1.223	1.593	0.819	1.136	69.78%
BLK	(S)	0.000	0.000	0.000	0.000	0.000	0.000	0.000	0.00%
CPL	(S)	0.804	1.116	0.202	0.588	0.749	0.822	0.492	30.22%
PPT	(B)	0.000	0.000	0.000	0.000	0.000	0.000	0.000	0.00%
HBD	(B)	1.672	1.754	1.276	1.339	1.271	0.971	0.771	47.33%
BLK	(B)	0.000	0.000	0.000	0.000	0.000	0.000	0.000	0.00%
CPL	(B)	0.177	0.316	0.380	0.472	1.072	0.670	0.858	52.67%
		Sell & Buy Orders Traded per Price Type							(%)
PPT	(S)	0	0	0	0	0	0	0	0.00%
HBD	(S)	247	208	358	85	162	89	127	100.00%
BLK	(S)	0	0	0	0	0	0	0	0.00%
PPT	(B)	0	0	0	0	0	0	0	0.00%
HBD	(B)	778	840	502	670	451	567	501	100.00%
BLK	(B)	0	0	0	0	0	0	0	0.00%

- MCP** Market Clearing Price (€/MWh)
- PPT** Priority Price-Taking
- HBD** Hybrid
- BLK** Block
- CPL** Market Coupling Flow

Trade's Volume Mix

		Sell - MWh	Buy - MWh	
Lignite	(0.0%)	0	0	(0.0%)
Crete Conv.	(0.0%)	0	0	(0.0%)
Gas	(41.0%)	667	13	(0.8%)
Hydro	(0.0%)	0	25	(1.5%)
Imports	(30.2%)	492		
RES	(6.4%)	104	203	(12.5%)
Crete RES	(0.0%)	0	0	(0.0%)
BESS	(0.0%)	0	0	(0.0%)
HV Load	(9.8%)	160	0	(0.0%)
MV Load	(0.8%)	13	151	(9.3%)
LV Load	(11.8%)	192	253	(15.6%)
Crete Load	(0.0%)	0	0	(0.0%)
Pumping	(0.0%)	0	125	(7.7%)
Exports			858	(52.7%)
Sys.Losses	(0.0%)	0	0	(0.0%)
D/R Load	(0.0%)	0	0	(0.0%)

