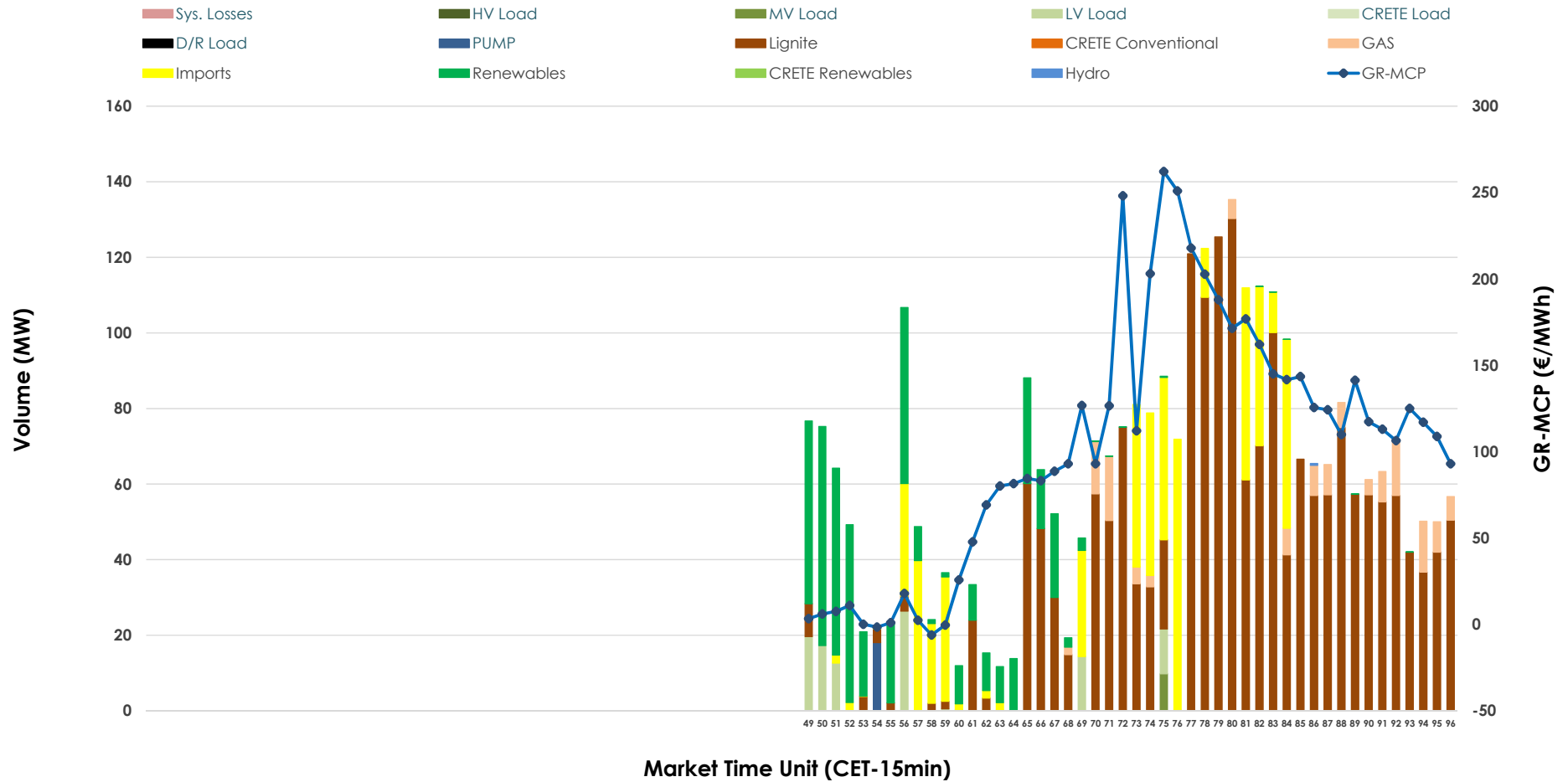


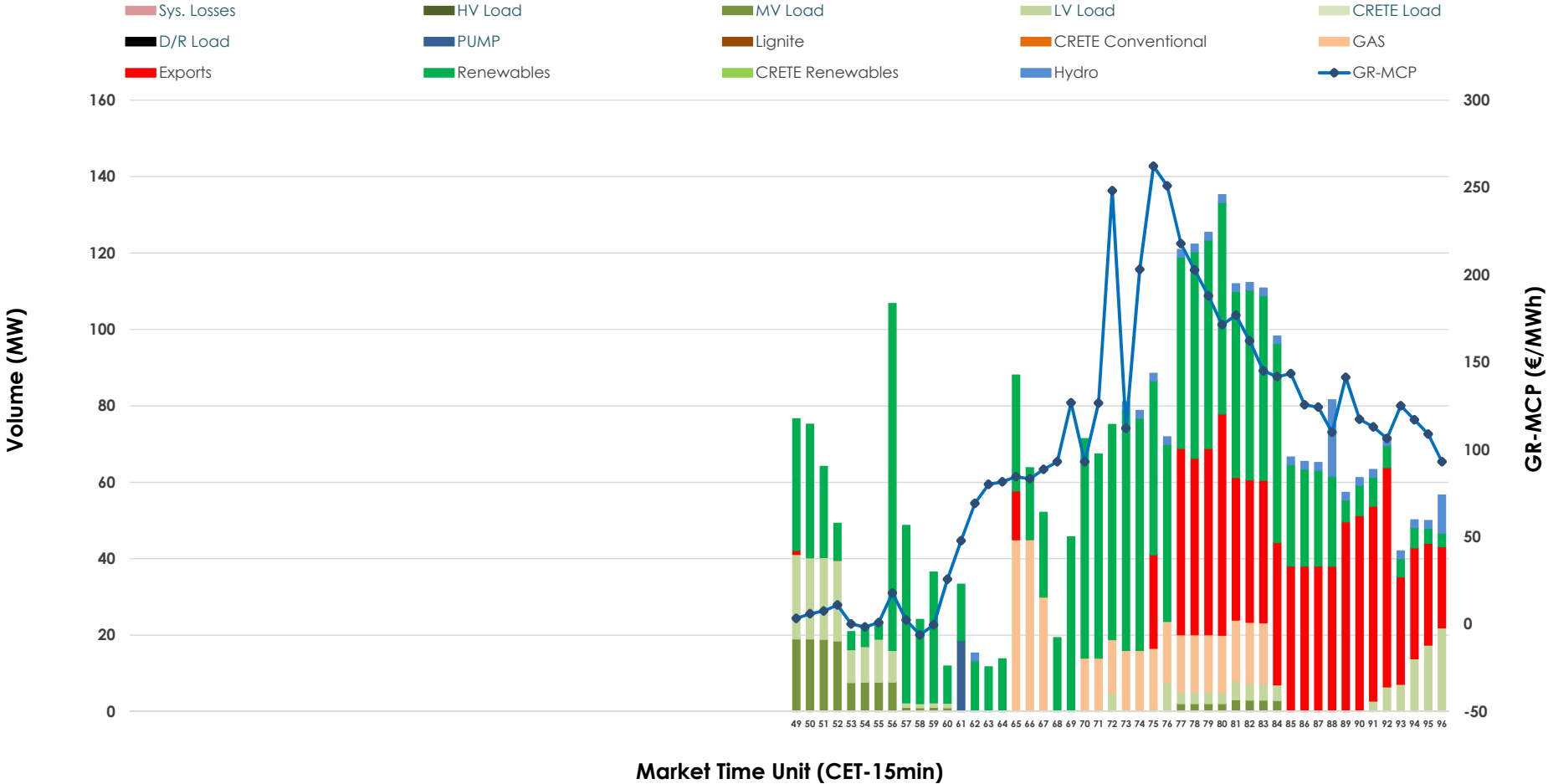


IDA '3' Market Outlook

04.03.2026 IDA '3' Market - Sell



04.03.2026 IDA '3' Market - Buy



GR Bidding Zone Weekly Figures

Delivery Day	26.02	27.02	28.02	01.03	02.03	03.03	04.03
	👇 -19%	👆 33%	👇 -33%	👆 10%	👆 80%	👆 7%	👇 -6%
Avg.MCP (€/MWh)	58.21	77.64	51.69	56.79	102.22	109.25	103.10
Max.MCP (€/MWh)	131.89	150.11	111.95	120.24	276.27	241.27	262.17
Min.MCP (€/MWh)	-18.94	-4.19	-14.76	-35.00	-22.29	-12.26	-6.13
	👉 0%	👉 20%	👉 0%	👇 -10%	👉 12%	👇 -49%	👉 32%
Tot.Vol(GWh)	1.90	2.29	2.28	2.04	2.28	1.17	1.55

Trades by Order Type

Delivery Day		26.02	27.02	28.02	01.03	02.03	03.03	04.03	
Ord Price Type		Sell & Buy Trades in (GWh) per Price Type							(%)
PPT	(S)	0.000	0.000	0.000	0.000	0.000	0.000	0.000	0.00%
HBD	(S)	0.839	0.596	1.010	0.842	1.097	0.533	0.644	82.98%
BLK	(S)	0.000	0.000	0.000	0.000	0.000	0.000	0.000	0.00%
CPL	(S)	0.110	0.548	0.128	0.178	0.043	0.053	0.132	17.02%
PPT	(B)	0.000	0.000	0.000	0.000	0.000	0.000	0.000	0.00%
HBD	(B)	0.932	1.050	0.878	0.952	0.675	0.416	0.562	72.44%
BLK	(B)	0.000	0.000	0.000	0.000	0.000	0.000	0.000	0.00%
CPL	(B)	0.018	0.094	0.260	0.067	0.465	0.170	0.214	27.56%
		Sell & Buy Orders Traded per Price Type							(%)
PPT	(S)	0	0	0	0	0	0	0	0.00%
HBD	(S)	82	123	177	229	186	93	126	100.00%
BLK	(S)	0	0	0	0	0	0	0	0.00%
PPT	(B)	0	0	0	0	0	0	0	0.00%
HBD	(B)	226	315	216	129	175	227	261	100.00%
BLK	(B)	0	0	0	0	0	0	0	0.00%

- MCP** Market Clearing Price (€/MWh)
- PPT** Priority Price-Taking
- HBD** Hybrid
- BLK** Block
- CPL** Market Coupling Flow

Trade's Volume Mix

	Sell - MWh	Buy - MWh	
Lignite (60.8%)	472	0	(0.0%)
Crete Conv. (0.0%)	0	0	(0.0%)
Gas (4.2%)	32	84	(10.8%)
Hydro (0.0%)	0	19	(2.4%)
Imports (17.0%)	132		
RES (13.6%)	106	362	(46.7%)
Crete RES (0.0%)	0	0	(0.0%)
HV Load (0.0%)	0	0	(0.0%)
MV Load (0.3%)	2	33	(4.2%)
LV Load (3.4%)	27	60	(7.7%)
Crete Load (0.0%)	0	0	(0.0%)
Pumping (0.6%)	5	5	(0.6%)
Exports		214	(27.6%)
Sys.Losses (0.0%)	0	0	(0.0%)
D/R Load (0.0%)	0	0	(0.0%)

