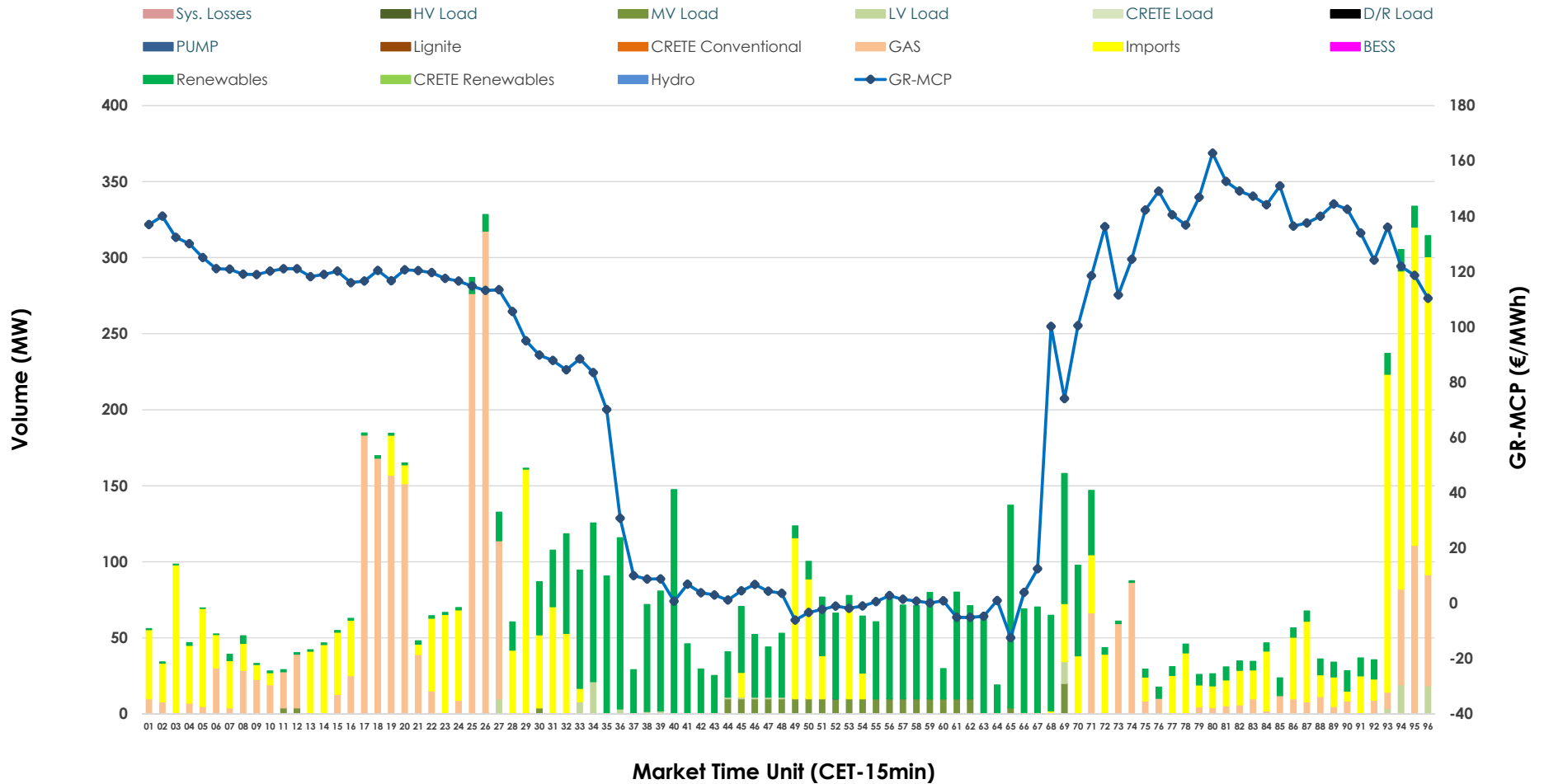


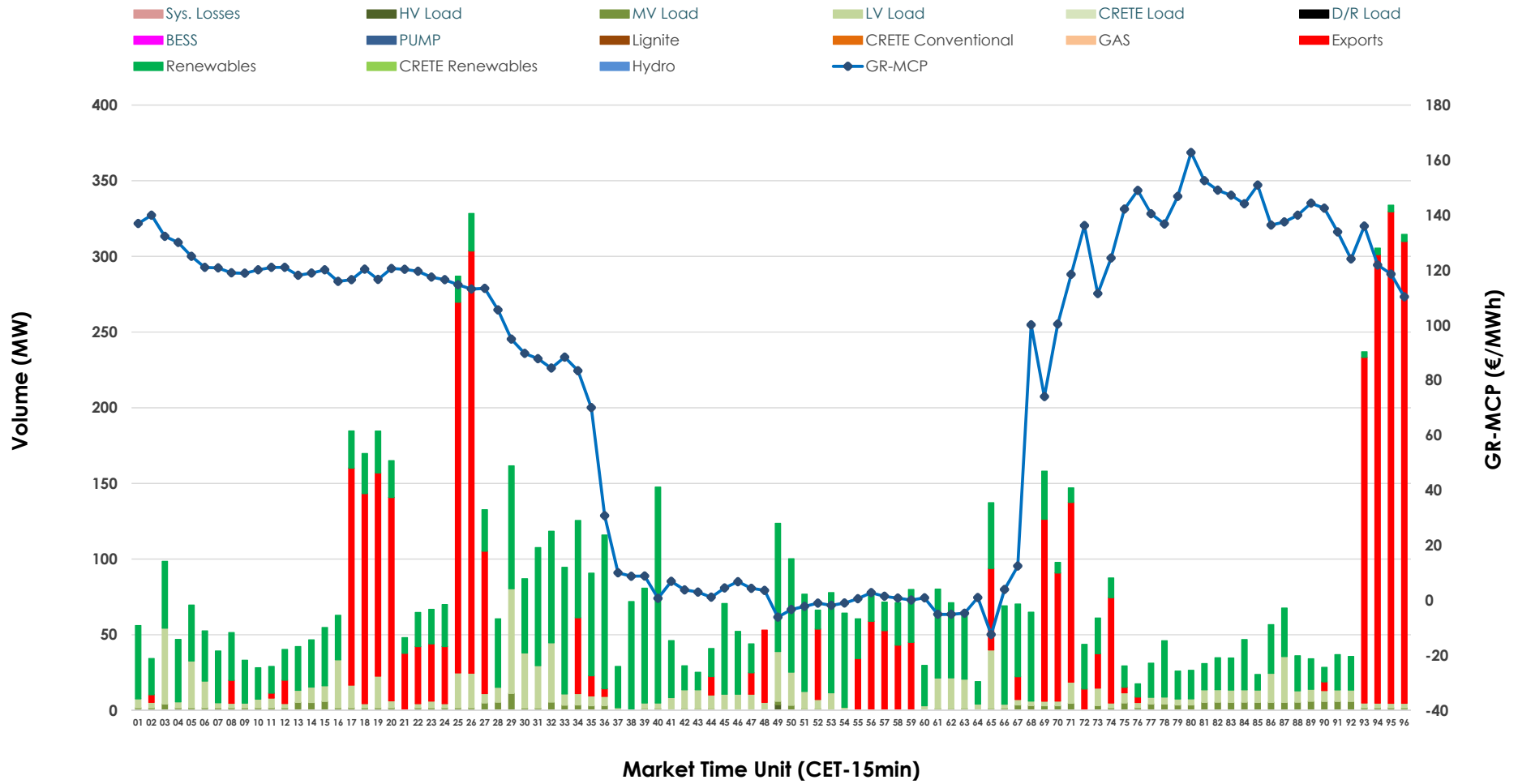


# IDA '2' Market Outlook

12.04.2026 IDA '2' Market - Sell



### 12.04.2026 IDA '2' Market - Buy



### GR Bidding Zone Weekly Figures

Delivery Day	06.04	07.04	08.04	09.04	10.04	11.04	12.04
	↑ 162%	↑ 55%	↓ -2%	↑ 14%	↑ 3%	↓ -8%	↓ -2%
Avg.MCP (€/MWh)	51.16	79.13	77.38	88.00	90.89	83.63	82.08
Max.MCP (€/MWh)	198.89	199.05	195.91	185.99	182.39	185.88	162.77
Min.MCP (€/MWh)	-48.10	-24.00	-29.60	-20.01	-7.00	-16.65	-12.45
	↑ 27%	↓ -28%	↑ 17%	↑ 14%	↓ -43%	→ 0%	↑ 8%
Tot.Vol(GWh)	6.68	4.81	5.64	6.42	3.69	3.71	4.02

### Trades by Order Type

Delivery Day		06.04	07.04	08.04	09.04	10.04	11.04	12.04	
Ord Price Type		Sell & Buy Trades in (GWh) per Price Type							(%)
PPT	(S)	0.000	0.000	0.000	0.000	0.000	0.000	0.000	0.00%
HBD	(S)	1.218	0.714	1.055	2.885	0.803	0.785	1.311	65.18%
BLK	(S)	0.000	0.000	0.000	0.000	0.000	0.000	0.000	0.00%
CPL	(S)	2.124	1.693	1.764	0.327	1.044	1.070	0.700	34.82%
PPT	(B)	0.000	0.000	0.000	0.000	0.000	0.000	0.000	0.00%
HBD	(B)	2.837	1.898	1.549	1.103	1.109	1.370	1.149	57.14%
BLK	(B)	0.000	0.000	0.000	0.000	0.000	0.000	0.000	0.00%
CPL	(B)	0.505	0.509	1.270	2.109	0.738	0.485	0.862	42.86%
		Sell & Buy Orders Traded per Price Type							(%)
PPT	(S)	0	0	0	0	0	0	0	0.00%
HBD	(S)	262	196	262	393	191	205	369	100.00%
BLK	(S)	0	0	0	0	0	0	0	0.00%
PPT	(B)	0	0	0	0	0	0	0	0.00%
HBD	(B)	634	632	353	526	494	633	571	100.00%
BLK	(B)	0	0	0	0	0	0	0	0.00%

- MCP** Market Clearing Price (€/MWh)
- PPT** Priority Price-Taking
- HBD** Hybrid
- BLK** Block
- CPL** Market Coupling Flow

### Trade's Volume Mix

	Sell - MWh	Buy - MWh	
Lignite	0	0	(0.0%)
Crete Conv.	0	0	(0.0%)
Gas	558	0	(0.0%)
Hydro	0	0	(0.0%)
Imports	700		
RES	667	836	(41.6%)
Crete RES	0	0	(0.0%)
BESS	0	0	(0.0%)
HV Load	0	1	(0.0%)
MV Load	57	61	(3.0%)
LV Load	28	251	(12.5%)
Crete Load	0	0	(0.0%)
Pumping	0	0	(0.0%)
Exports		862	(42.9%)
Sys.Losses	0	0	(0.0%)
D/R Load	0	0	(0.0%)

