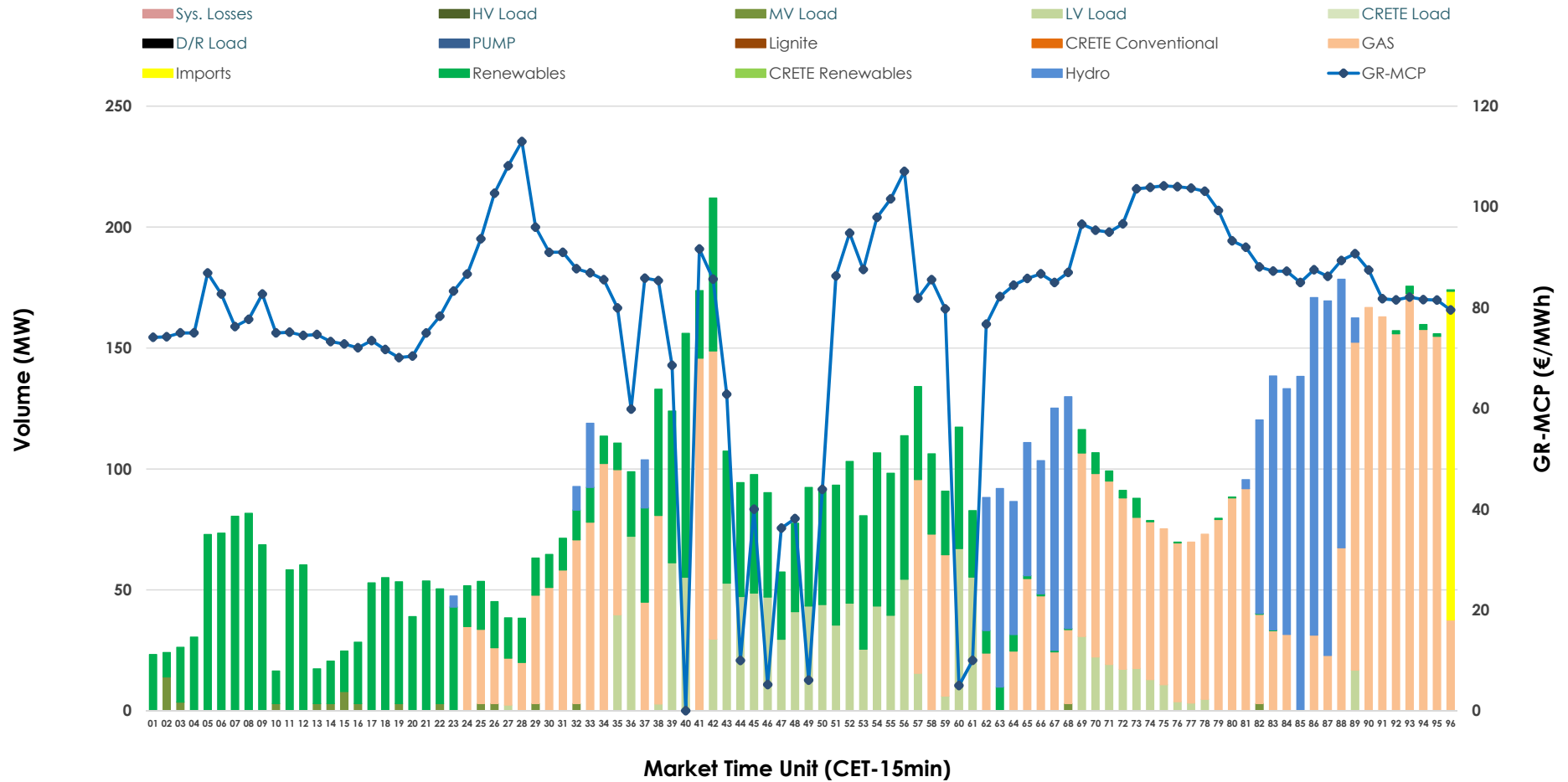


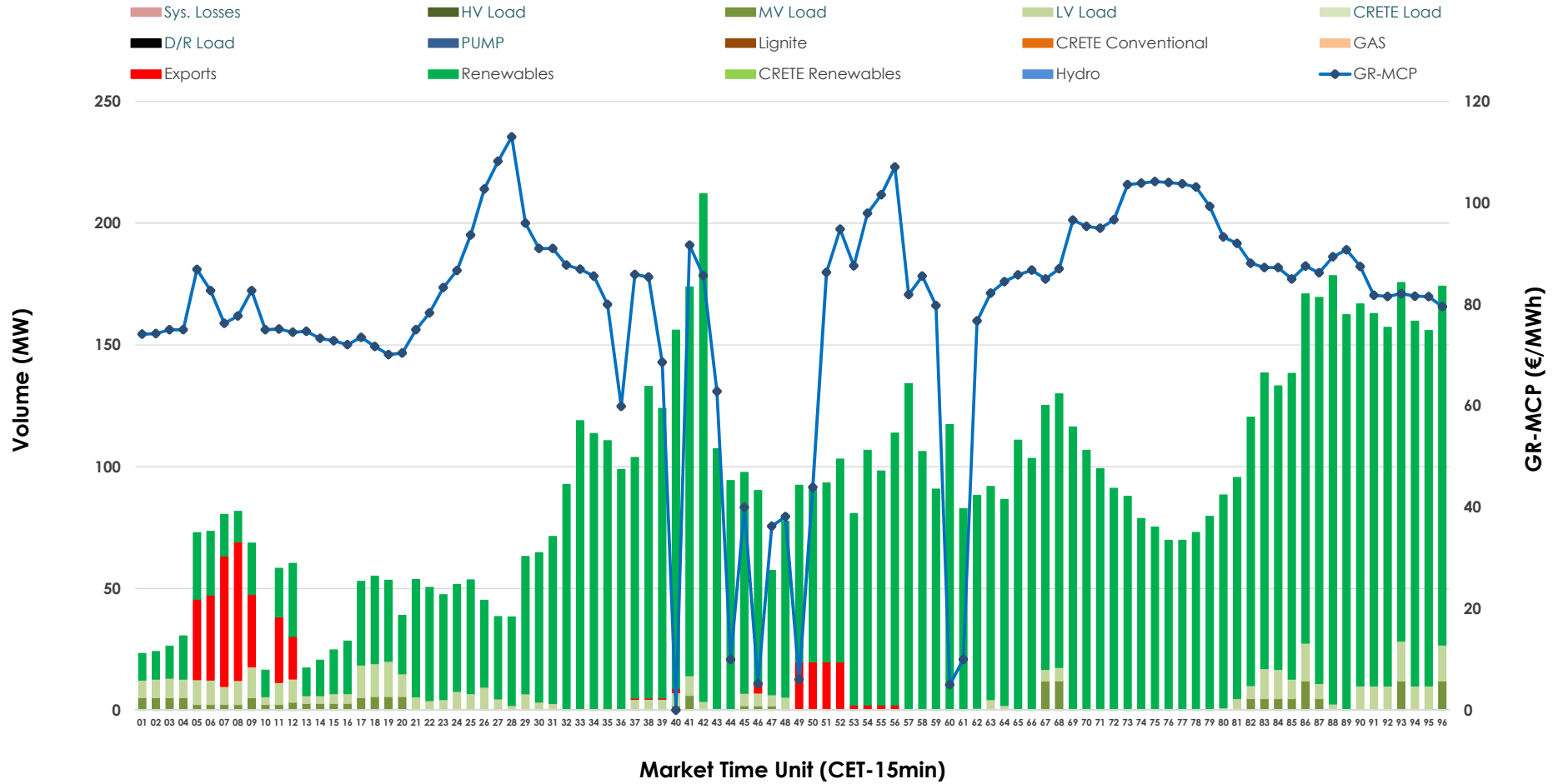


IDA '2' Market Outlook

12.02.2026 IDA '2' Market - Sell



12.02.2026 IDA '2' Market - Buy



GR Bidding Zone Weekly Figures

Delivery Day	06.02	07.02	08.02	09.02	10.02	11.02	12.02
	➔ 0%	👇 -17%	👉 18%	👆 43%	👇 -14%	👇 -15%	👇 -18%
Avg.MCP (€/MWh)	94.02	78.28	92.03	131.37	112.78	95.73	78.95
Max.MCP (€/MWh)	138.97	147.50	136.14	217.55	184.09	159.65	112.99
Min.MCP (€/MWh)	36.39	-2.23	8.64	91.39	85.49	55.29	0.01
	👇 -28%	👆 226%	👇 -27%	👇 -30%	👉 30%	👇 -14%	👉 15%
Tot.Vol(GWh)	2.08	6.80	4.96	3.49	4.54	3.91	4.49

Trades by Order Type

Delivery Day		06.02	07.02	08.02	09.02	10.02	11.02	12.02	
Ord Price Type		Sell & Buy Trades in (GWh) per Price Type							(%)
PPT	(S)	0.000	0.000	0.000	0.000	0.000	0.000	0.000	0.00%
HBD	(S)	0.971	2.916	2.161	1.173	2.028	1.654	2.213	98.49%
BLK	(S)	0.000	0.000	0.000	0.000	0.000	0.000	0.000	0.00%
CPL	(S)	0.071	0.481	0.320	0.572	0.240	0.304	0.034	1.51%
PPT	(B)	0.000	0.000	0.000	0.000	0.000	0.000	0.000	0.00%
HBD	(B)	0.995	3.052	2.212	1.435	1.857	1.152	2.160	96.16%
BLK	(B)	0.000	0.000	0.000	0.000	0.000	0.000	0.000	0.00%
CPL	(B)	0.046	0.346	0.269	0.311	0.411	0.806	0.086	3.84%
		Sell & Buy Orders Traded per Price Type							(%)
PPT	(S)	0	0	0	0	0	0	0	0.00%
HBD	(S)	218	338	210	274	173	264	270	100.00%
BLK	(S)	0	0	0	0	0	0	0	0.00%
PPT	(B)	0	0	0	0	0	0	0	0.00%
HBD	(B)	487	389	477	493	477	470	456	100.00%
BLK	(B)	0	0	0	0	0	0	0	0.00%

MCP Market Clearing Price (€/MWh)
PPT Priority Price-Taking
HBD Hybrid
BLK Block
CPL Market Coupling Flow

Trade's Volume Mix

	Sell - MWh	Buy - MWh	
Lignite (0.0%)	0	0	(0.0%)
Crete Conv. (0.0%)	0	0	(0.0%)
Gas (41.3%)	928	0	(0.0%)
Hydro (15.5%)	349	0	(0.0%)
Imports (1.5%)	34		
RES (28.0%)	630	2,004	(89.2%)
Crete RES (0.0%)	0	0	(0.0%)
HV Load (0.0%)	0	0	(0.0%)
MV Load (0.7%)	15	46	(2.1%)
LV Load (12.9%)	291	110	(4.9%)
Crete Load (0.0%)	0	0	(0.0%)
Pumping (0.0%)	0	0	(0.0%)
Exports		86	(3.8%)
Sys.Losses (0.0%)	0	0	(0.0%)
D/R Load (0.0%)	0	0	(0.0%)

