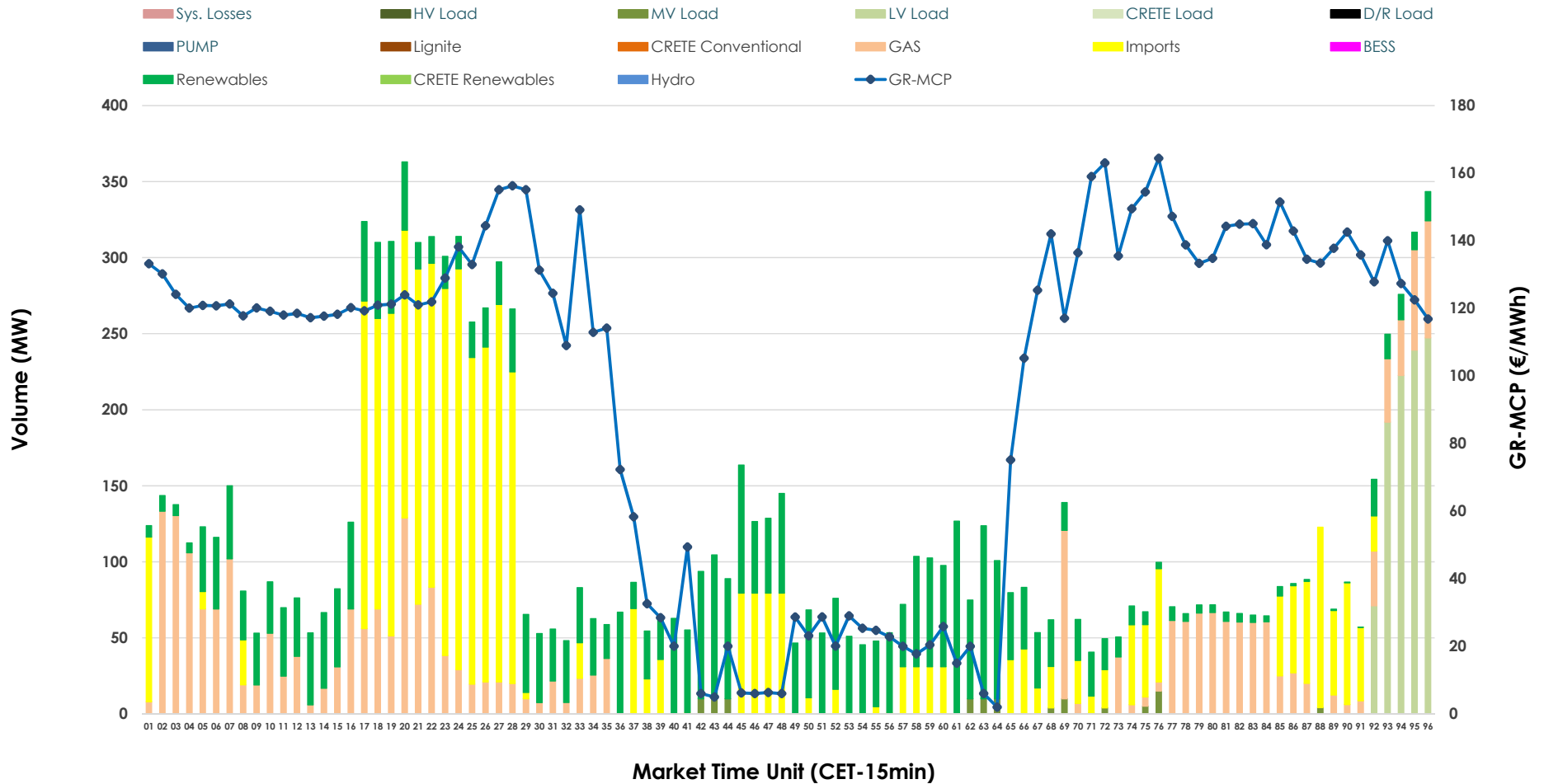


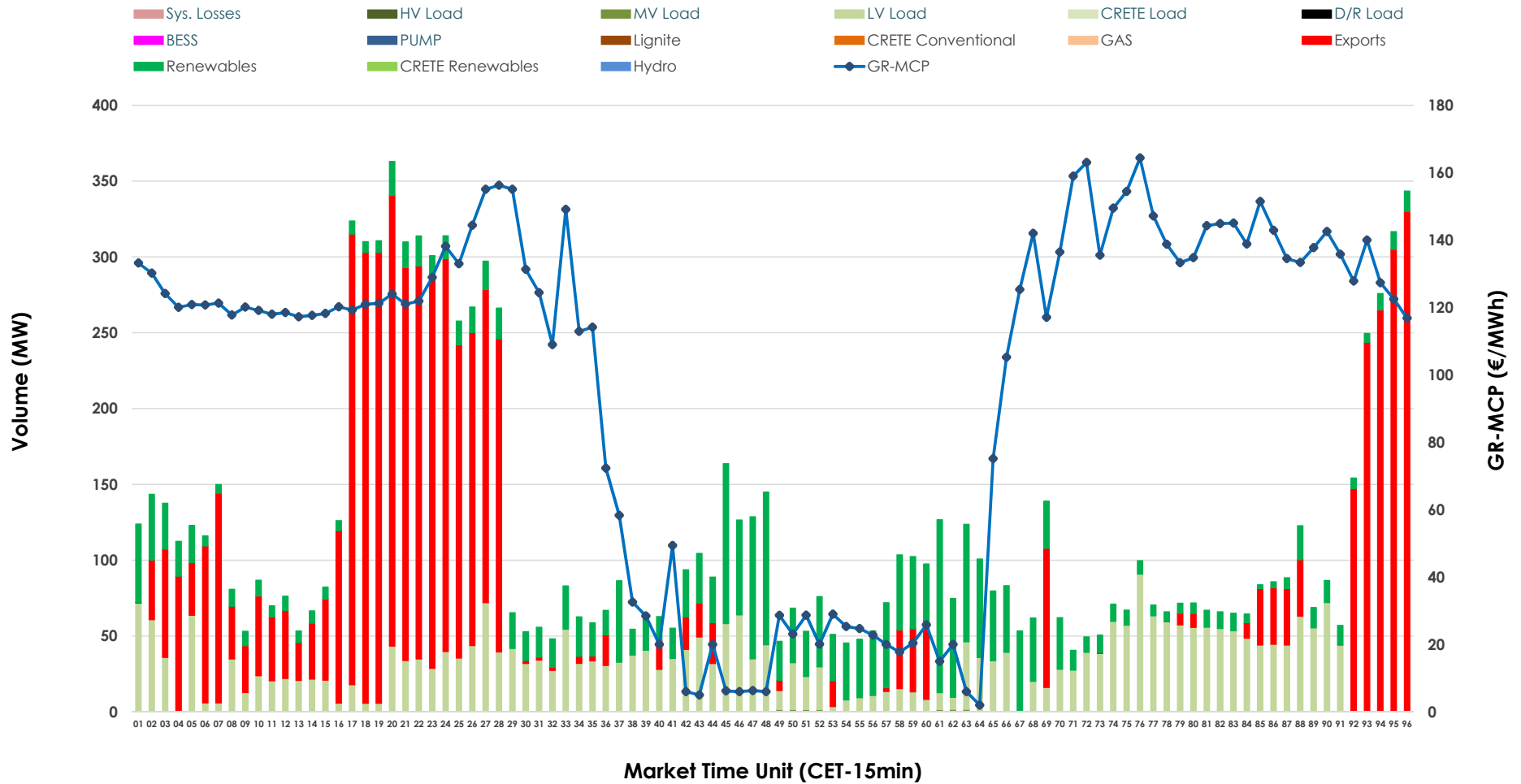


IDA '2' Market Outlook

13.04.2026 IDA '2' Market - Sell



13.04.2026 IDA '2' Market - Buy



GR Bidding Zone Weekly Figures

Delivery Day	07.04	08.04	09.04	10.04	11.04	12.04	13.04
	↑ 55%	↓ -2%	↔ 14%	↔ 3%	↓ -8%	↓ -2%	↔ 20%
Avg.MCP (€/MWh)	79.13	77.38	88.00	90.89	83.63	82.08	98.24
Max.MCP (€/MWh)	199.05	195.91	185.99	182.39	185.88	162.77	164.38
Min.MCP (€/MWh)	-24.00	-29.60	-20.01	-7.00	-16.65	-12.45	2.00
	↓ -28%	↔ 17%	↔ 14%	↓ -43%	↔ 0%	↔ 8%	↑ 43%
Tot.Vol(GWh)	4.81	5.64	6.42	3.69	3.71	4.02	5.74

Trades by Order Type

Delivery Day		07.04	08.04	09.04	10.04	11.04	12.04	13.04	
Ord Price Type		Sell & Buy Trades in (GWh) per Price Type							(%)
PPT	(S)	0.000	0.000	0.000	0.000	0.000	0.000	0.000	0.00%
HBD	(S)	0.714	1.055	2.885	0.803	0.785	1.311	1.800	62.73%
BLK	(S)	0.000	0.000	0.000	0.000	0.000	0.000	0.000	0.00%
CPL	(S)	1.693	1.764	0.327	1.044	1.070	0.700	1.070	37.27%
PPT	(B)	0.000	0.000	0.000	0.000	0.000	0.000	0.000	0.00%
HBD	(B)	1.898	1.549	1.103	1.109	1.370	1.149	1.419	49.46%
BLK	(B)	0.000	0.000	0.000	0.000	0.000	0.000	0.000	0.00%
CPL	(B)	0.509	1.270	2.109	0.738	0.485	0.862	1.450	50.54%
		Sell & Buy Orders Traded per Price Type							(%)
PPT	(S)	0	0	0	0	0	0	0	0.00%
HBD	(S)	196	262	393	191	205	369	370	100.00%
BLK	(S)	0	0	0	0	0	0	0	0.00%
PPT	(B)	0	0	0	0	0	0	0	0.00%
HBD	(B)	632	353	526	494	633	571	448	100.00%
BLK	(B)	0	0	0	0	0	0	0	0.00%

- MCP** Market Clearing Price (€/MWh)
- PPT** Priority Price-Taking
- HBD** Hybrid
- BLK** Block
- CPL** Market Coupling Flow

Trade's Volume Mix

	Sell - MWh	Buy - MWh	
Lignite (0.0%)	0	0	(0.0%)
Crete Conv. (0.0%)	0	0	(0.0%)
Gas (23.2%)	666	0	(0.0%)
Hydro (0.0%)	0	0	(0.0%)
Imports (37.3%)	1,070		
RES (30.2%)	866	628	(21.9%)
Crete RES (0.0%)	0	0	(0.0%)
BESS (0.0%)	0	0	(0.0%)
HV Load (0.0%)	0	0	(0.0%)
MV Load (0.9%)	26	6	(0.2%)
LV Load (8.5%)	243	786	(27.4%)
Crete Load (0.0%)	0	0	(0.0%)
Pumping (0.0%)	0	0	(0.0%)
Exports		1,450	(50.5%)
Sys.Losses (0.0%)	0	0	(0.0%)
D/R Load (0.0%)	0	0	(0.0%)

