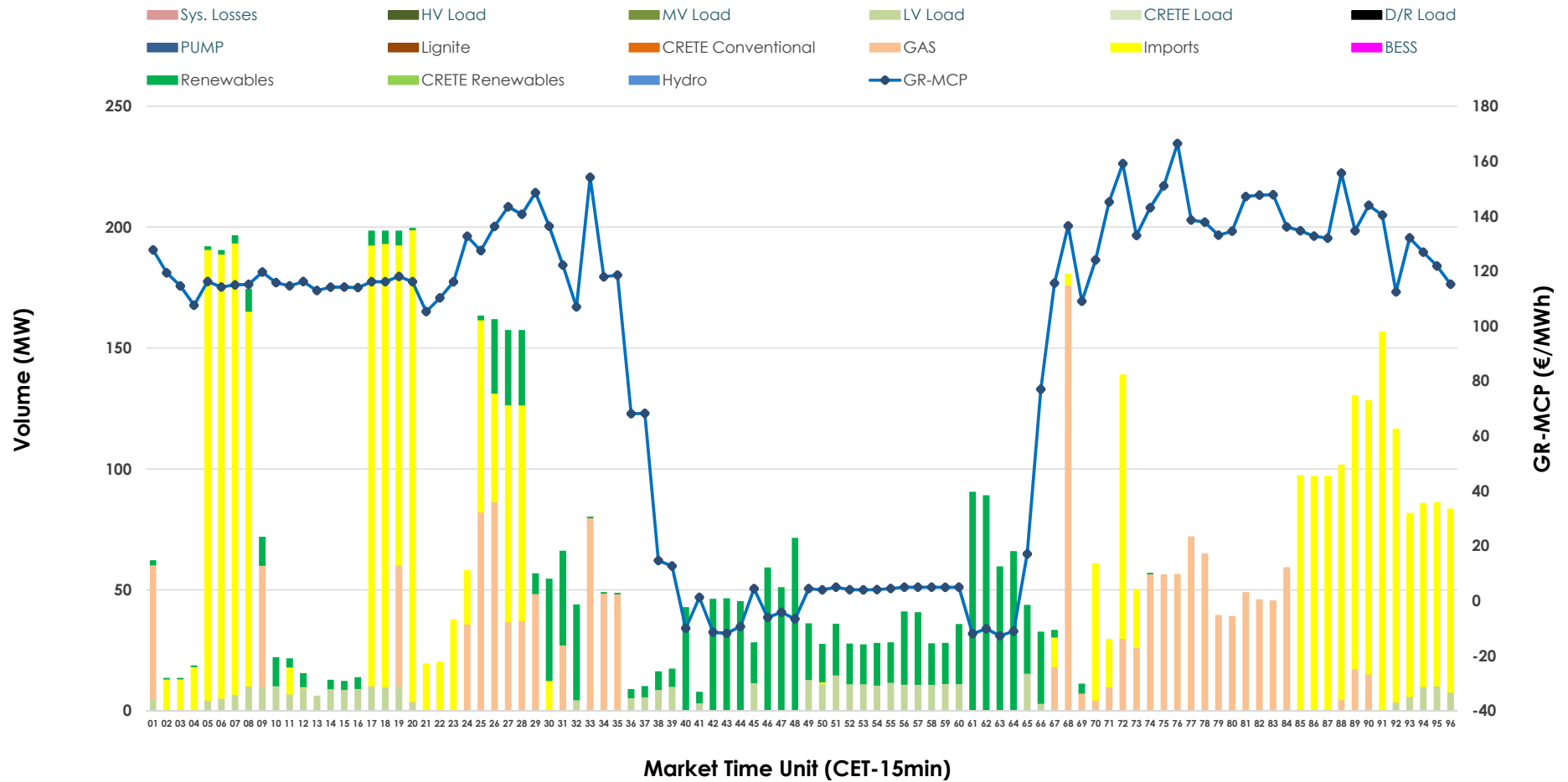


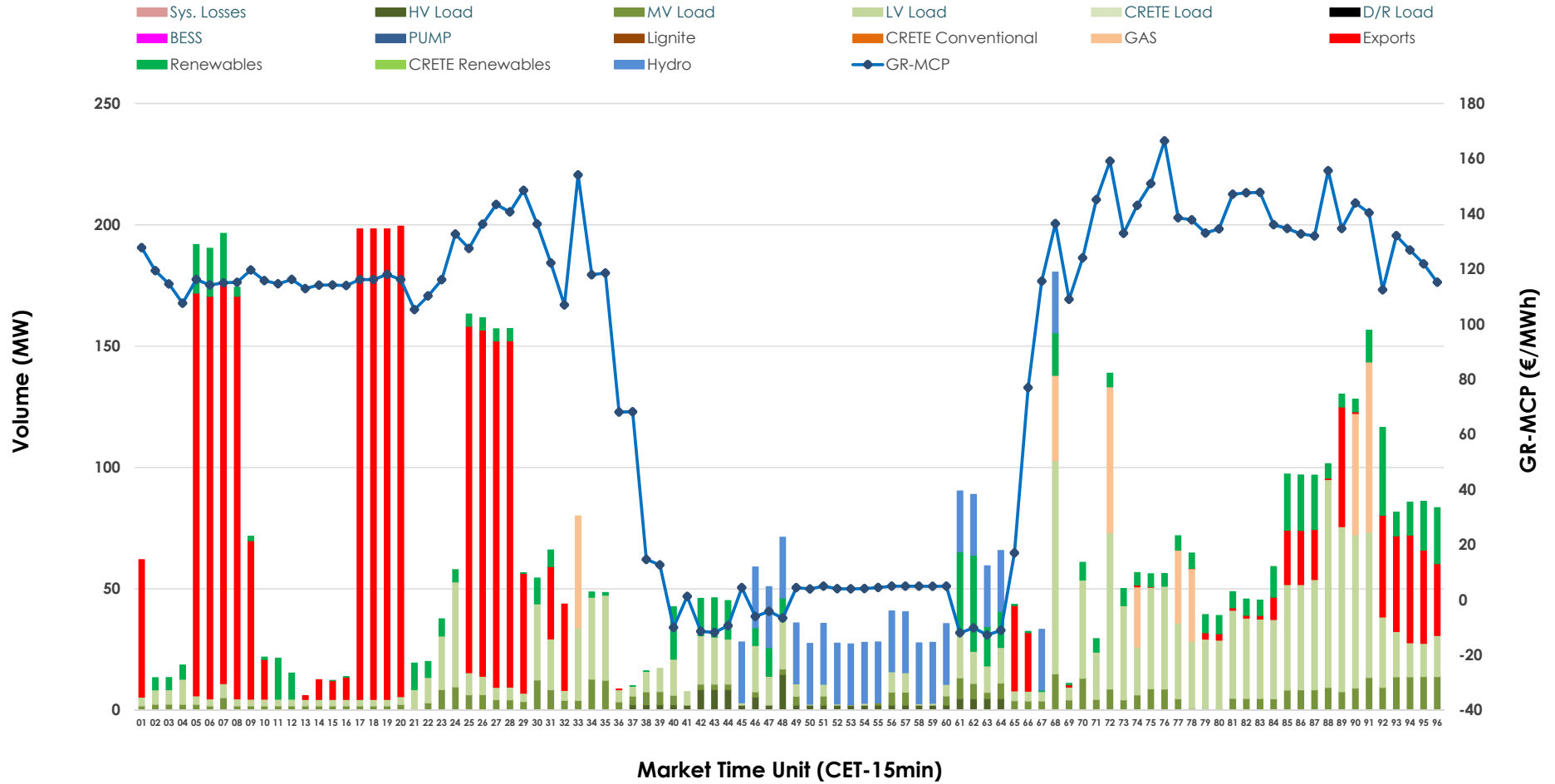


IDA '1' Market Outlook

13.04.2026 IDA '1' Market - Sell



13.04.2026 IDA '1' Market - Buy



GR Bidding Zone Weekly Figures

Delivery Day	07.04	08.04	09.04	10.04	11.04	12.04	13.04
	↗ 24%	↘ -7%	↗ 20%	↗ 3%	↘ -11%	↘ -5%	↗ 10%
Avg.MCP (€/MWh)	82.25	76.84	92.32	95.36	85.00	80.90	88.91
Max.MCP (€/MWh)	201.50	189.41	192.88	192.88	184.98	160.00	166.41
Min.MCP (€/MWh)	-19.78	-17.84	-10.96	-4.00	-9.45	-6.33	-12.71
	➔ -1%	↘ -1%	↗ 12%	↘ -20%	↗ 9%	↗ 29%	↘ -30%
Tot.Vol(GWh)	3.75	3.70	4.14	3.31	3.62	4.68	3.28

Trades by Order Type

Delivery Day		07.04	08.04	09.04	10.04	11.04	12.04	13.04	
Ord Price Type		Sell & Buy Trades in (GWh) per Price Type							(%)
PPT	(S)	0.000	0.000	0.000	0.000	0.000	0.000	0.000	0.00%
HBD	(S)	1.032	1.045	0.954	1.454	1.223	1.593	0.819	49.90%
BLK	(S)	0.000	0.000	0.000	0.000	0.000	0.000	0.000	0.00%
CPL	(S)	0.844	0.804	1.116	0.202	0.588	0.749	0.822	50.10%
PPT	(B)	0.000	0.000	0.000	0.000	0.000	0.000	0.000	0.00%
HBD	(B)	1.451	1.672	1.754	1.276	1.339	1.271	0.971	59.19%
BLK	(B)	0.000	0.000	0.000	0.000	0.000	0.000	0.000	0.00%
CPL	(B)	0.424	0.177	0.316	0.380	0.472	1.072	0.670	40.81%
		Sell & Buy Orders Traded per Price Type							(%)
PPT	(S)	0	0	0	0	0	0	0	0.00%
HBD	(S)	122	247	208	358	85	162	89	100.00%
BLK	(S)	0	0	0	0	0	0	0	0.00%
PPT	(B)	0	0	0	0	0	0	0	0.00%
HBD	(B)	865	778	840	502	670	451	567	100.00%
BLK	(B)	0	0	0	0	0	0	0	0.00%

- MCP** Market Clearing Price (€/MWh)
- PPT** Priority Price-Taking
- HBD** Hybrid
- BLK** Block
- CPL** Market Coupling Flow

Trade's Volume Mix

	Sell - MWh	Buy - MWh	
Lignite (0.0%)	0	0	(0.0%)
Crete Conv. (0.0%)	0	0	(0.0%)
Gas (24.1%)	395	86	(5.3%)
Hydro (0.0%)	0	138	(8.4%)
Imports (50.1%)	822		
RES (20.0%)	328	175	(10.7%)
Crete RES (0.0%)	0	0	(0.0%)
BESS (0.0%)	0	0	(0.0%)
HV Load (0.0%)	0	26	(1.6%)
MV Load (0.0%)	0	116	(7.1%)
LV Load (5.8%)	96	430	(26.2%)
Crete Load (0.0%)	0	0	(0.0%)
Pumping (0.0%)	0	0	(0.0%)
Exports		670	(40.8%)
Sys.Losses (0.0%)	0	0	(0.0%)
D/R Load (0.0%)	0	0	(0.0%)

