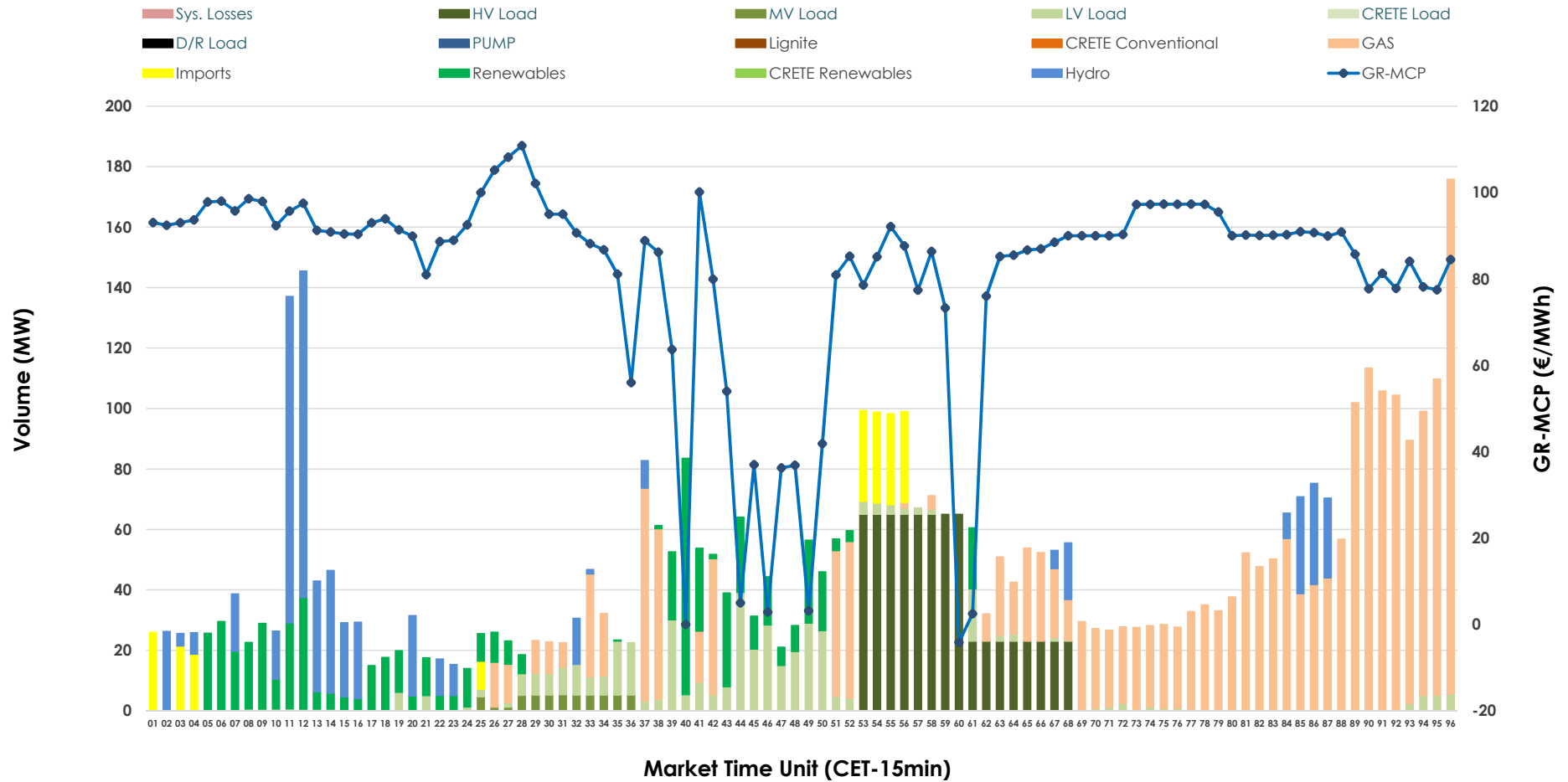


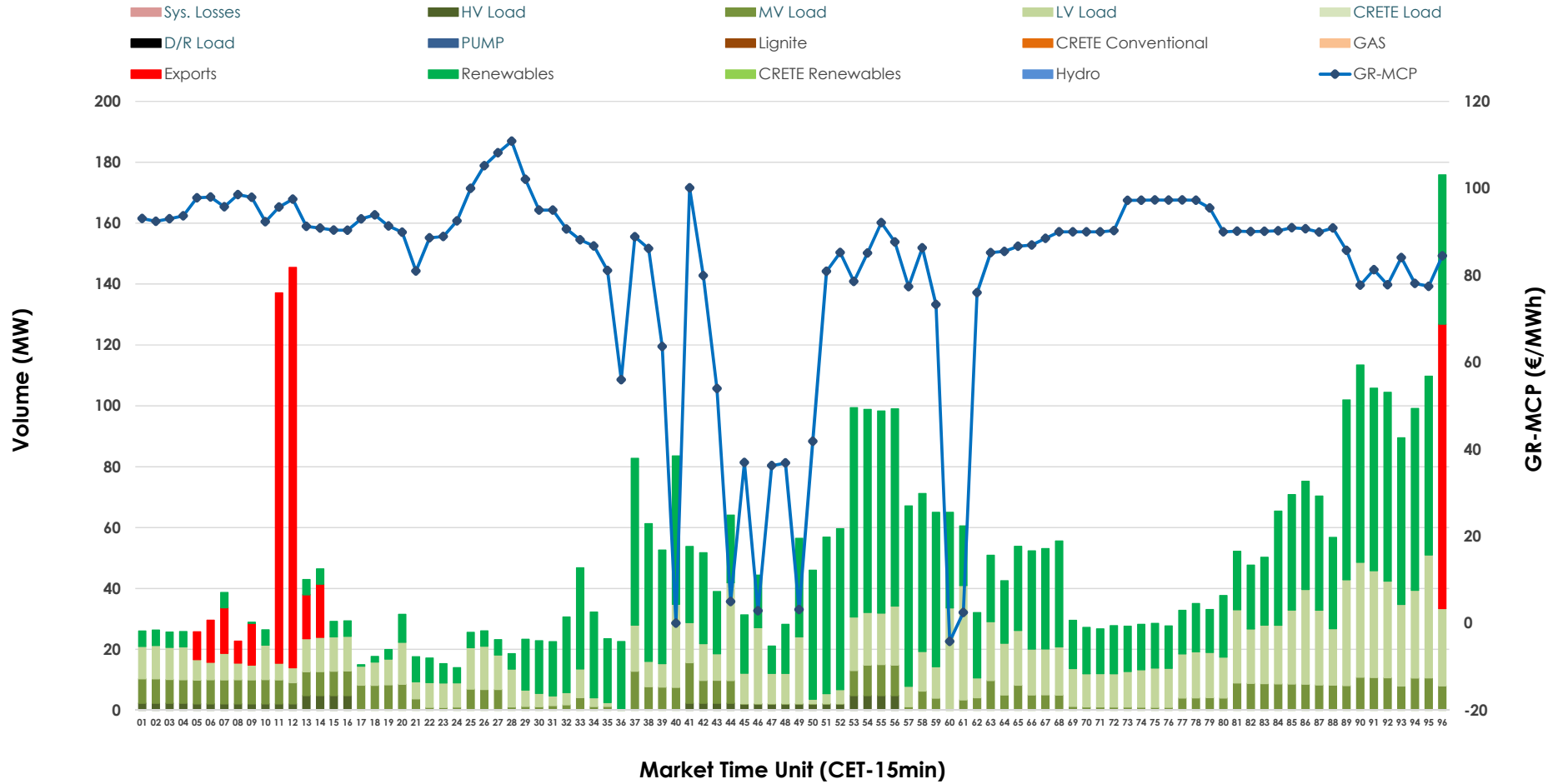


IDA '1' Market Outlook

12.02.2026 IDA '1' Market - Sell



12.02.2026 IDA '1' Market - Buy



GR Bidding Zone Weekly Figures

Delivery Day	06.02	07.02	08.02	09.02	10.02	11.02	12.02
	👇 -5%	👇 -23%	👉 19%	👆 53%	👇 -15%	👇 -13%	👇 -17%
Avg.MCP (€/MWh)	94.63	72.71	86.21	131.86	112.38	98.03	81.52
Max.MCP (€/MWh)	144.90	136.60	154.78	216.66	182.80	138.82	110.84
Min.MCP (€/MWh)	8.40	-2.50	-3.80	93.93	75.33	35.30	-4.17
	👇 -26%	👆 145%	👇 -57%	👆 41%	👇 -3%	👇 -4%	👇 -44%
Tot.Vol(GWh)	3.09	7.57	3.29	4.64	4.51	4.34	2.41

Trades by Order Type

Delivery Day		06.02	07.02	08.02	09.02	10.02	11.02	12.02	
Ord Price Type		Sell & Buy Trades in (GWh) per Price Type							(%)
PPT	(S)	0.000	0.000	0.000	0.000	0.000	0.000	0.000	0.00%
HBD	(S)	1.546	3.734	1.288	1.277	2.203	2.101	1.156	95.94%
BLK	(S)	0.000	0.000	0.000	0.000	0.000	0.000	0.000	0.00%
CPL	(S)	0.000	0.049	0.356	1.044	0.054	0.068	0.049	4.06%
PPT	(B)	0.000	0.000	0.000	0.000	0.000	0.000	0.000	0.00%
HBD	(B)	1.267	3.783	1.026	1.688	1.461	0.907	1.095	90.93%
BLK	(B)	0.000	0.000	0.000	0.000	0.000	0.000	0.000	0.00%
CPL	(B)	0.279	0.000	0.618	0.633	0.795	1.262	0.109	9.07%
		Sell & Buy Orders Traded per Price Type							(%)
PPT	(S)	0	0	0	0	0	0	0	0.00%
HBD	(S)	242	196	104	224	187	313	135	100.00%
BLK	(S)	0	0	0	0	0	0	0	0.00%
PPT	(B)	0	0	0	0	0	0	0	0.00%
HBD	(B)	678	453	584	577	716	644	666	100.00%
BLK	(B)	0	0	0	0	0	0	0	0.00%

- MCP** Market Clearing Price (€/MWh)
- PPT** Priority Price-Taking
- HBD** Hybrid
- BLK** Block
- CPL** Market Coupling Flow

Trade's Volume Mix

	Sell - MWh	Buy - MWh	
Lignite (0.0%)	0	0	(0.0%)
Crete Conv. (0.0%)	0	0	(0.0%)
Gas (45.2%)	545	0	(0.0%)
Hydro (12.8%)	154	0	(0.0%)
Imports (4.1%)	49		
RES (13.4%)	161	595	(49.4%)
Crete RES (0.0%)	0	0	(0.0%)
HV Load (14.6%)	176	23	(1.9%)
MV Load (1.1%)	13	134	(11.2%)
LV Load (8.9%)	107	343	(28.5%)
Crete Load (0.0%)	0	0	(0.0%)
Pumping (0.0%)	0	0	(0.0%)
Exports		109	(9.1%)
Sys.Losses (0.0%)	0	0	(0.0%)
D/R Load (0.0%)	0	0	(0.0%)

