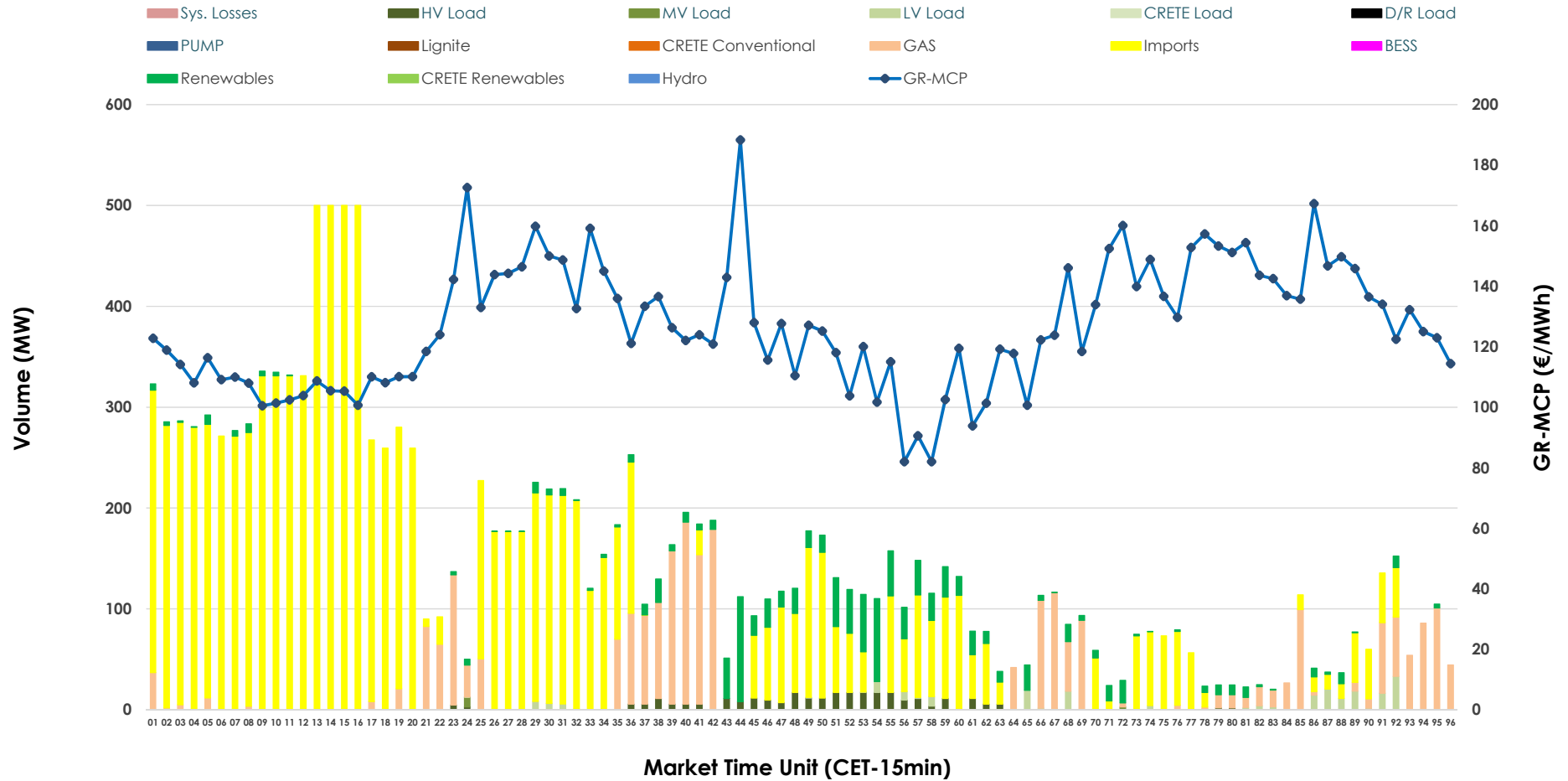


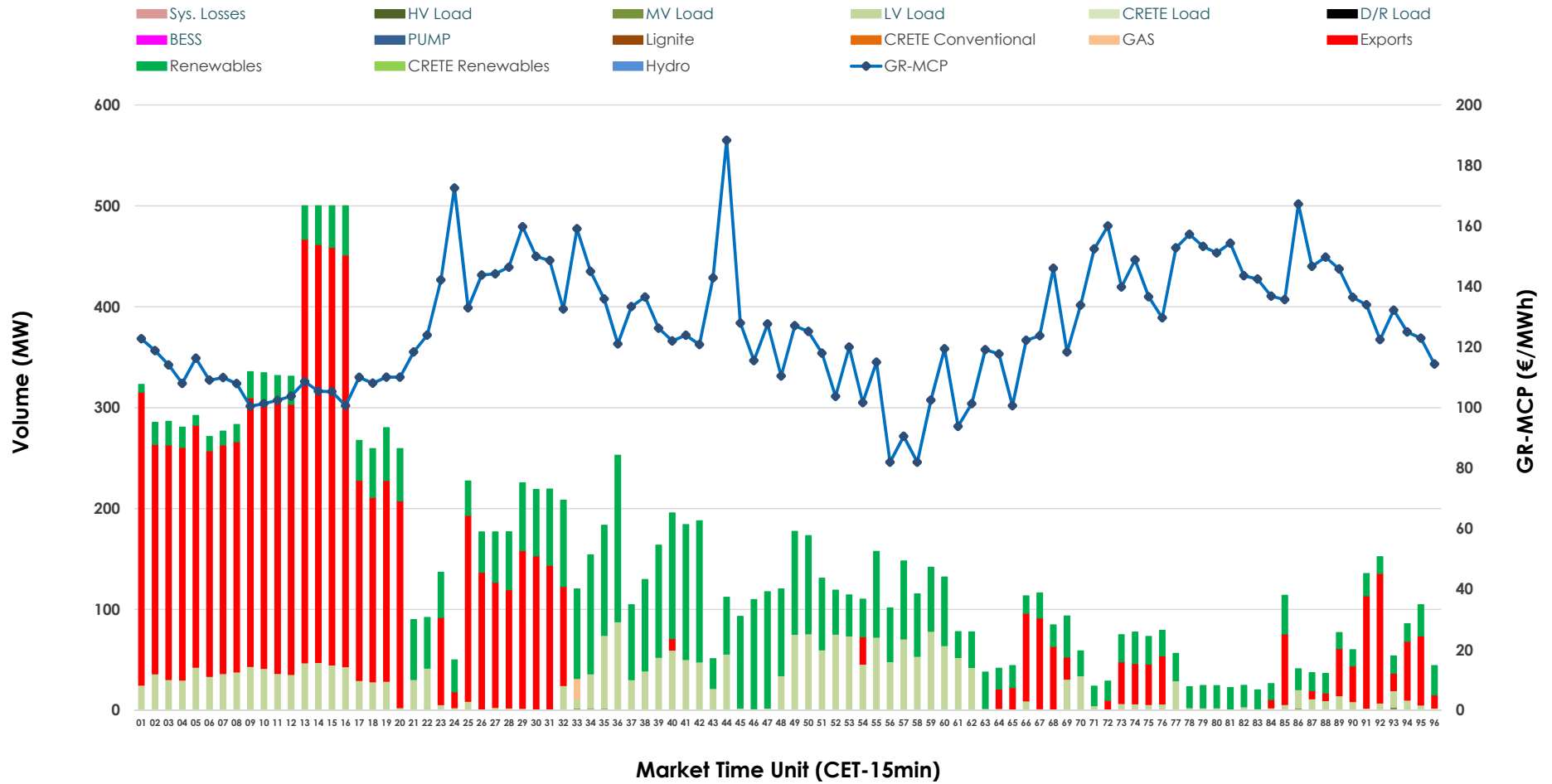


# IDA '2' Market Outlook

15.04.2026 IDA '2' Market - Sell



### 15.04.2026 IDA '2' Market - Buy



### GR Bidding Zone Weekly Figures

Delivery Day	09.04	10.04	11.04	12.04	13.04	14.04	15.04
	↗ 14%	↗ 3%	↘ -8%	↘ -2%	↗ 20%	↗ 41%	↘ -8%
<b>Avg.MCP (€/MWh)</b>	88.00	90.89	83.63	82.08	98.24	138.59	126.89
<b>Max.MCP (€/MWh)</b>	185.99	182.39	185.88	162.77	164.38	261.33	188.32
<b>Min.MCP (€/MWh)</b>	-20.01	-7.00	-16.65	-12.45	2.00	86.61	82.00
	↗ 14%	↘ -43%	↗ 0%	↗ 8%	↗ 43%	↘ -51%	↗ 167%
<b>Tot.Vol(GWh)</b>	6.42	3.69	3.71	4.02	5.74	2.78	7.43

### Trades by Order Type

Delivery Day		09.04	10.04	11.04	12.04	13.04	14.04	15.04	
<b>Ord Price Type</b>		Sell & Buy Trades in (GWh) per Price Type							(%)
<b>PPT</b>	(S)	0.000	0.000	0.000	0.000	0.000	0.000	0.000	0.00%
<b>HBD</b>	(S)	2.885	0.803	0.785	1.311	1.800	0.620	1.018	27.37%
<b>BLK</b>	(S)	0.000	0.000	0.000	0.000	0.000	0.000	0.000	0.00%
<b>CPL</b>	(S)	0.327	1.044	1.070	0.700	1.070	0.772	2.700	72.63%
<b>PPT</b>	(B)	0.000	0.000	0.000	0.000	0.000	0.000	0.000	0.00%
<b>HBD</b>	(B)	1.103	1.109	1.370	1.149	1.419	1.141	1.789	48.12%
<b>BLK</b>	(B)	0.000	0.000	0.000	0.000	0.000	0.000	0.000	0.00%
<b>CPL</b>	(B)	2.109	0.738	0.485	0.862	1.450	0.252	1.929	51.88%
		Sell & Buy Orders Traded per Price Type							(%)
<b>PPT</b>	(S)	0	0	0	0	0	0	0	0.00%
<b>HBD</b>	(S)	393	191	205	369	370	197	188	100.00%
<b>BLK</b>	(S)	0	0	0	0	0	0	0	0.00%
<b>PPT</b>	(B)	0	0	0	0	0	0	0	0.00%
<b>HBD</b>	(B)	526	494	633	571	448	369	479	100.00%
<b>BLK</b>	(B)	0	0	0	0	0	0	0	0.00%

- MCP** Market Clearing Price (€/MWh)
- PPT** Priority Price-Taking
- HBD** Hybrid
- BLK** Block
- CPL** Market Coupling Flow

### Trade's Volume Mix

	Sell - MWh	Buy - MWh	
<b>Lignite</b> (0.0%)	0	0	(0.0%)
<b>Crete Conv.</b> (0.0%)	0	0	(0.0%)
<b>Gas</b> (16.8%)	624	5	(0.1%)
<b>Hydro</b> (0.0%)	0	0	(0.0%)
<b>Imports</b> (72.6%)	2,700		
<b>RES</b> (7.1%)	265	1,132	(30.5%)
<b>Crete RES</b> (0.0%)	0	0	(0.0%)
<b>BESS</b> (0.0%)	0	0	(0.0%)
<b>HV Load</b> (1.9%)	71	0	(0.0%)
<b>MV Load</b> (0.1%)	3	4	(0.1%)
<b>LV Load</b> (1.5%)	55	647	(17.4%)
<b>Crete Load</b> (0.0%)	0	0	(0.0%)
<b>Pumping</b> (0.0%)	0	0	(0.0%)
<b>Exports</b>		1,929	(51.9%)
<b>Sys.Losses</b> (0.0%)	0	0	(0.0%)
<b>D/R Load</b> (0.0%)	0	0	(0.0%)

