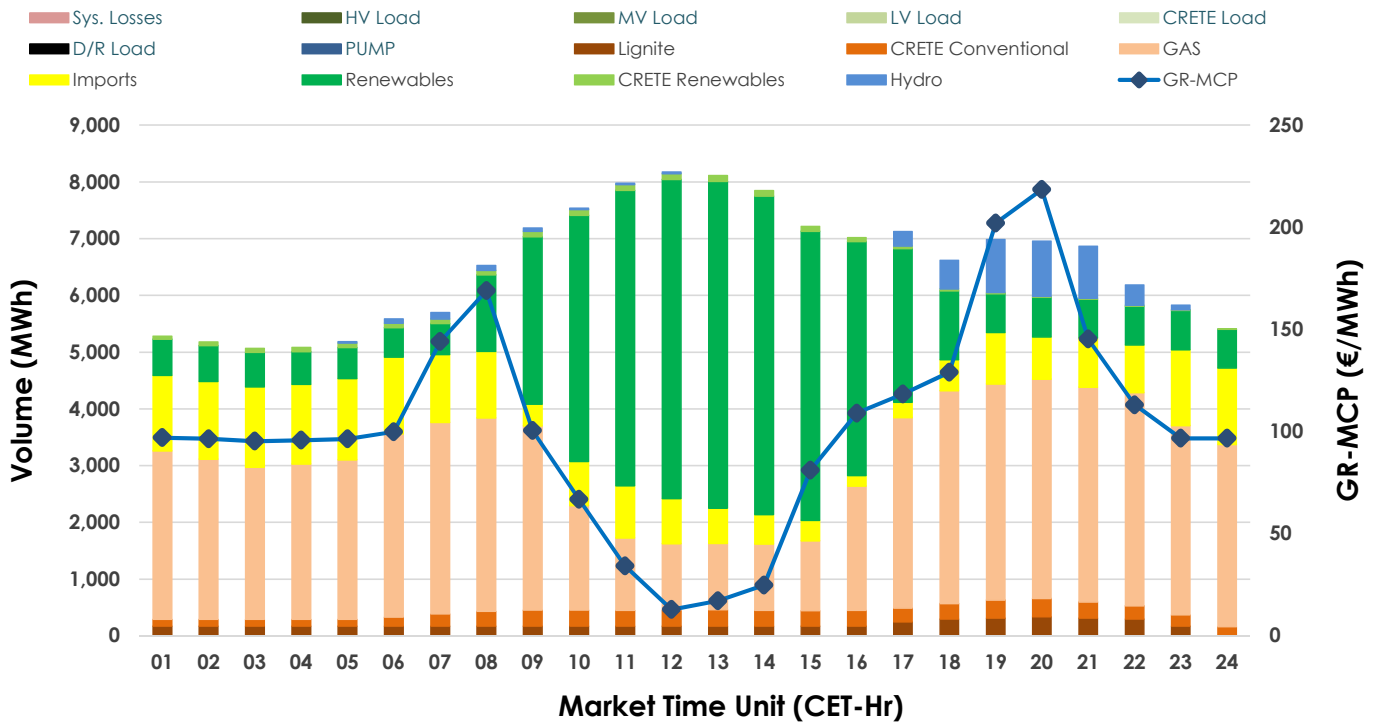


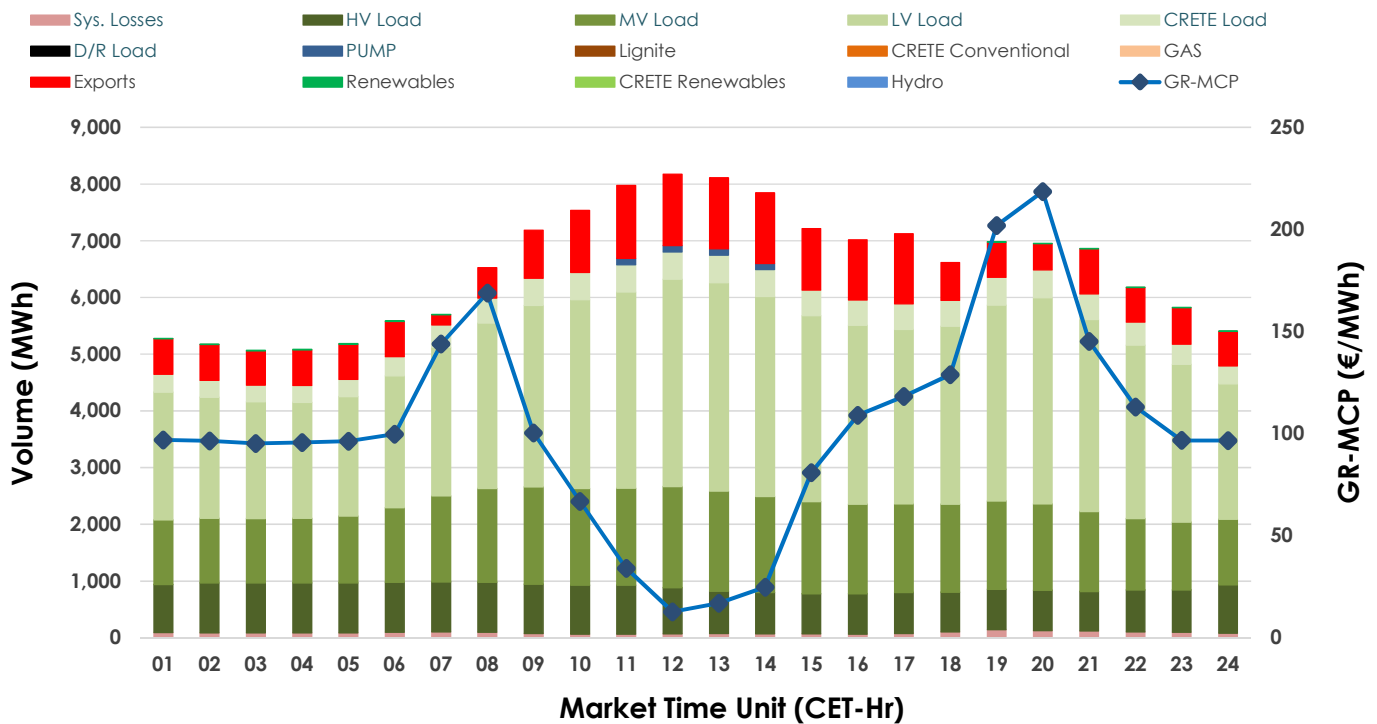


# Day-Ahead Market Outlook

## 02.10.2024 Day-Ahead Market - Sell



## 02.10.2024 Day-Ahead Market - Buy



## GR Bidding Zone Weekly Figures

Delivery Day	26.09	27.09	28.09	29.09	30.09	01.10	02.10
	↗ 5%	↘ -11%	↘ -3%	↘ -37%	↗ 15%	↗ 25%	↗ 25%
Avg.MCP (€/MWh)	104.49	93.50	90.70	56.92	65.61	81.86	102.46
Max.MCP (€/MWh)	211.81	182.36	139.15	114.63	171.19	201.19	218.50
Min.MCP (€/MWh)	30.70	20.79	33.40	0.04	1.87	5.00	12.79
	↘ -1%	↗ 2%	↘ -4%	↘ -5%	↗ 7%	↗ 0%	↗ 0%
Tot.Vol(GWh)	311.39	319.07	305.71	291.56	311.16	311.93	313.29

## Trades by Order Type

Delivery Day	26.09	27.09	28.09	29.09	30.09	01.10	02.10
Order P.T	Sell & Buy Trades in (GWh) per Price Type						
PPT (S)	49.021	54.679	53.935	62.069	63.025	61.633	61.111
HBD (S)	45.617	45.168	44.392	45.924	62.642	53.852	48.006
BLK (S)	33.167	32.486	24.670	16.253	13.072	24.946	34.345
CPL (S)	27.892	27.204	29.858	21.536	16.839	15.534	13.185
PPT (B)	16.561	15.882	15.938	15.013	16.512	15.628	14.839
HBD (B)	133.088	136.187	127.322	121.105	127.887	129.101	130.472
BLK (B)							
CPL (B)	6.048	7.467	9.596	9.664	11.180	11.236	11.336
	Sell & Buy Orders Traded per Price Type						
PPT (S)	619	640	642	608	524	657	632
HBD (S)	927	960	924	805	800	897	875
BLK (S)	169	172	133	87	75	133	173
PPT (B)	647	612	644	659	674	633	607
HBD (B)	1174	1224	1184	1229	1275	1232	1248
BLK (B)							

<b>MCP</b>	Market Clearing Price (€/MWh)
<b>PPT</b>	Priority Price-Taking
<b>HBD</b>	Hybrid
<b>BLK</b>	Block
<b>CPL</b>	Market Coupling Flow

## Trade's Volume Mix

	Sell - MWh	Buy - MWh	
Lignite	(3.0%) 4,672	0	(0.0%)
Crete Conv.	(3.5%) 5,496	0	(0.0%)
Gas	(42.3%) 66,275	0	(0.0%)
Hydro	(2.8%) 4,455	0	(0.0%)
Imports	(14.1%) 22,099		
RES	(33.3%) 52,159	89	(0.1%)
Crete RES	(1.0%) 1,491	0	(0.0%)
HV Load	(0.0%) 0	19,183	(12.2%)
MV Load	(0.0%) 0	34,987	(22.3%)
LV Load	(0.0%) 0	70,639	(45.1%)
Crete Load	(0.0%) 0	9,879	(6.3%)
Pumping	(0.0%) 0	440	(0.3%)
Exports		19,225	(12.3%)
Sys.Losses	(0.0%) 0	2,205	(1.4%)
D/R Load	(0.0%) 0	0	(0.0%)

