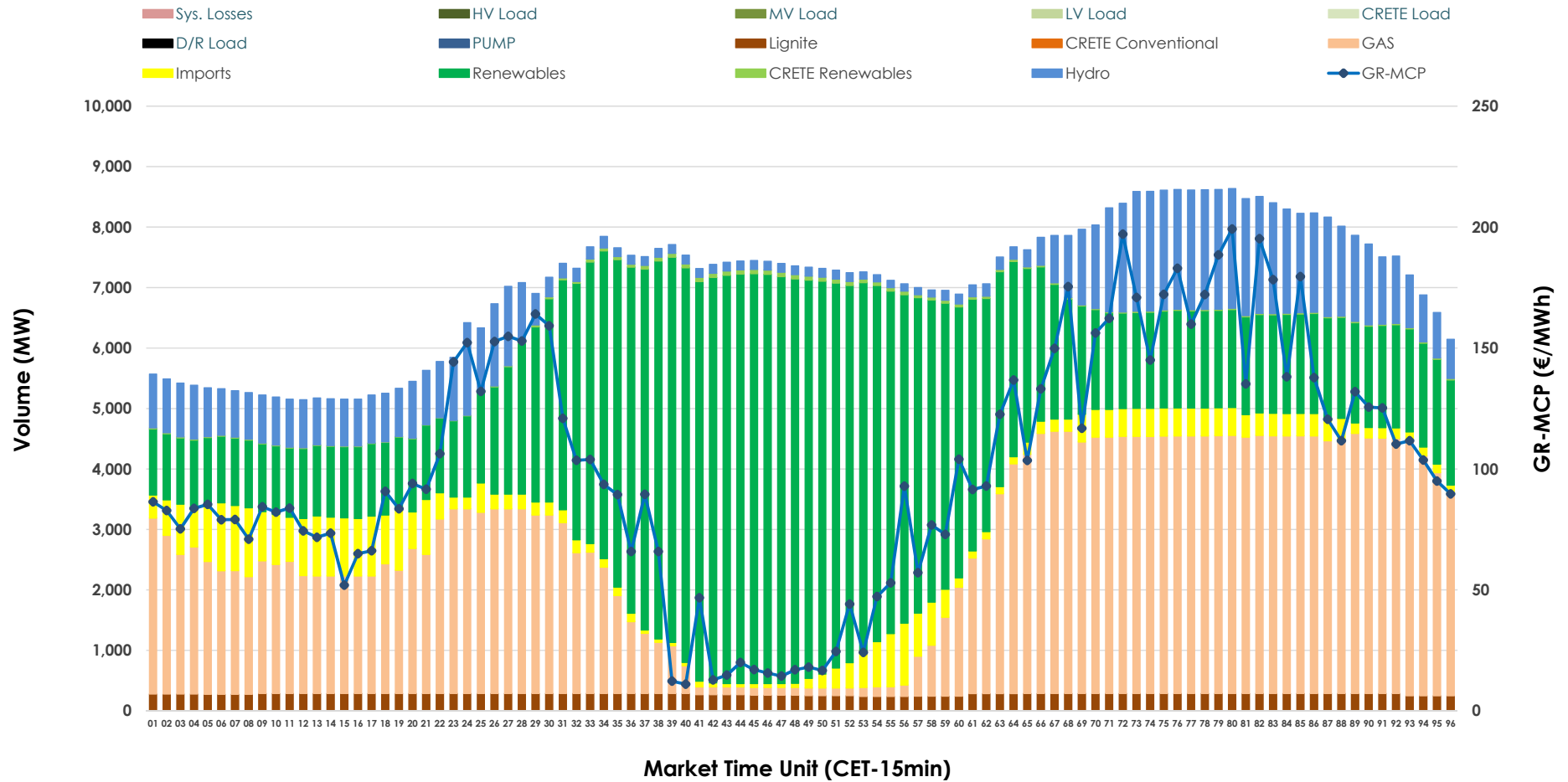


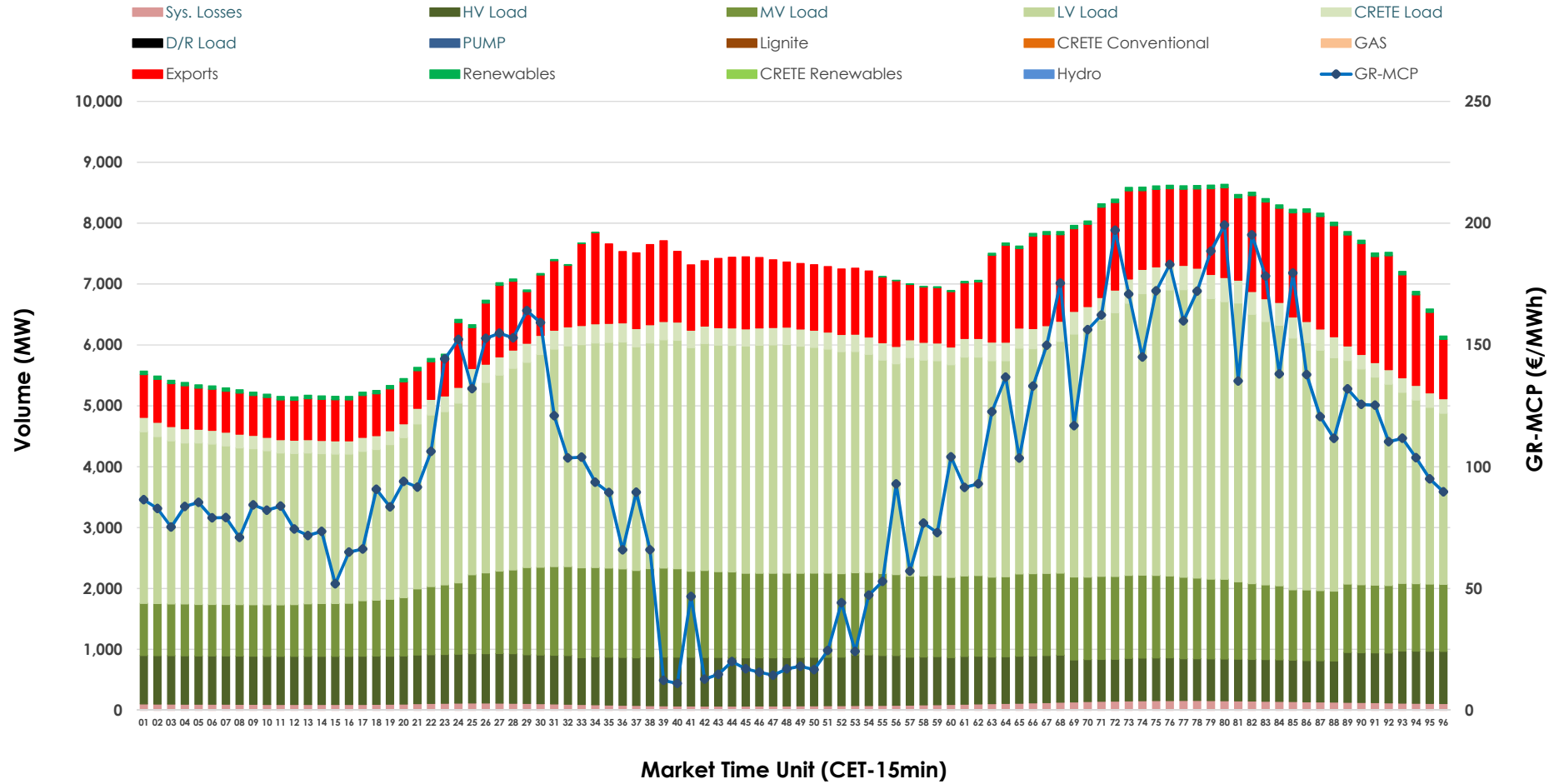


Day-Ahead Market Outlook

16.03.2026 Day-Ahead Market - Sell



16.03.2026 Day-Ahead Market - Buy



GR Bidding Zone Weekly Figures

Delivery Day	10.03	11.03	12.03	13.03	14.03	15.03	16.03
	↗ 2%	↗ 10%	↗ 16%	↘ -17%	↘ -6%	↘ -1%	↗ 20%
Avg.MCP (€/MWh)	84.90	93.35	108.24	89.55	84.39	83.39	100.39
Max.MCP (€/MWh)	253.89	240.49	247.52	215.45	183.48	164.03	199.21
Min.MCP (€/MWh)	0.00	0.00	0.00	-0.10	-6.30	-1.01	11.01
	↘ -2%	↘ -8%	↗ 5%	↗ 1%	↘ -4%	↘ -6%	↗ 4%
Tot.Vol(GWh)	369.77	340.80	358.00	362.26	346.25	324.10	338.55

Trades by Order Type

Delivery Day		10.03	11.03	12.03	13.03	14.03	15.03	16.03	
Ord Price Type		Sell & Buy Trades in (GWh) per Price Type							(%)
PPT	(S)	92.307	79.824	79.190	88.806	81.903	74.010	71.660	42.33%
HBD	(S)	67.169	58.548	66.823	60.729	63.501	60.076	63.406	37.46%
BLK	(S)	25.386	26.866	29.533	31.267	27.207	27.936	29.721	17.56%
CPL	(S)	0.022	5.164	3.454	0.328	0.515	0.029	4.488	2.65%
PPT	(B)	12.949	12.840	13.965	14.237	14.168	12.939	13.684	8.08%
HBD	(B)	142.529	138.311	138.400	139.218	131.135	118.547	136.429	80.60%
BLK	(B)	0.000	0.000	0.000	0.000	0.000	0.000	0.000	0.00%
CPL	(B)	29.406	19.251	26.635	27.674	27.823	30.565	19.163	11.32%
		Sell & Buy Orders Traded per Price Type							(%)
PPT	(S)	2050	1996	1979	1976	1847	1792	1814	36.61%
HBD	(S)	2512	2905	3046	2552	2666	2723	3131	63.19%
BLK	(S)	13	10	14	14	12	12	10	0.20%
PPT	(B)	2339	2312	2311	2364	2364	2341	2255	36.35%
HBD	(B)	4076	4033	3862	4085	3996	3981	3949	63.65%
BLK	(B)	0	0	0	0	0	0	0	0.00%

MCP Market Clearing Price (€/MWh)
PPT Priority Price-Taking
HBD Hybrid
BLK Block
CPL Market Coupling Flow

Trade's Volume Mix

		Sell - MWh	Buy - MWh	
Lignite	(3.9%)	6,612	0	(0.0%)
Crete Conv.	(0.0%)	0	0	(0.0%)
Gas	(35.6%)	60,236	0	(0.0%)
Hydro	(11.5%)	19,477	0	(0.0%)
Imports	(5.9%)	9,996		
RES	(42.6%)	72,193	863	(0.5%)
Crete RES	(0.5%)	762	0	(0.0%)
HV Load	(0.0%)	0	18,616	(11.0%)
MV Load	(0.0%)	0	29,353	(17.3%)
LV Load	(0.0%)	0	83,572	(49.4%)
Crete Load	(0.0%)	0	7,045	(4.2%)
Pumping	(0.0%)	0	0	(0.0%)
Exports			27,230	(16.1%)
Sys.Losses	(0.0%)	0	2,597	(1.5%)
D/R Load	(0.0%)	0	0	(0.0%)

