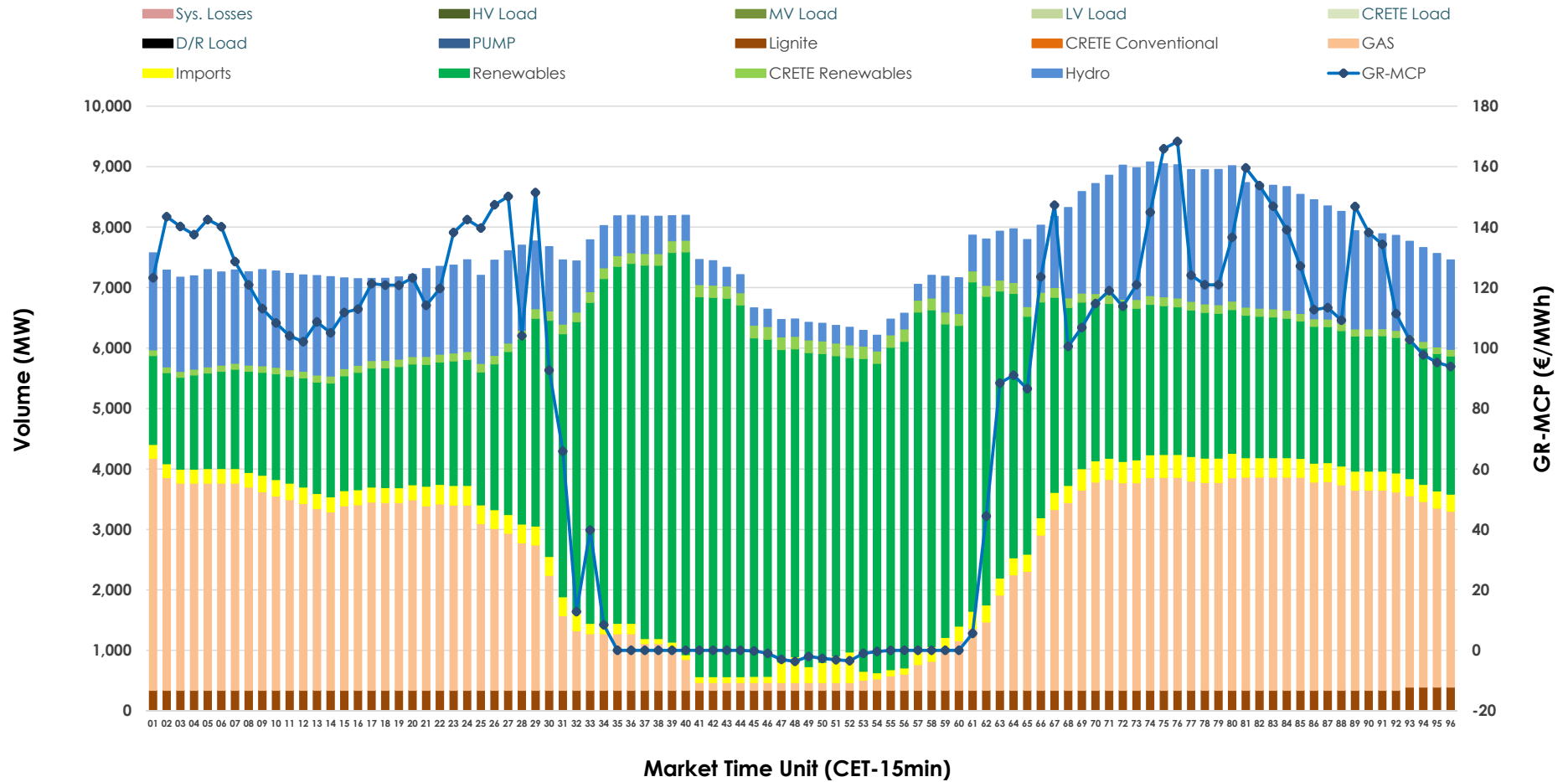


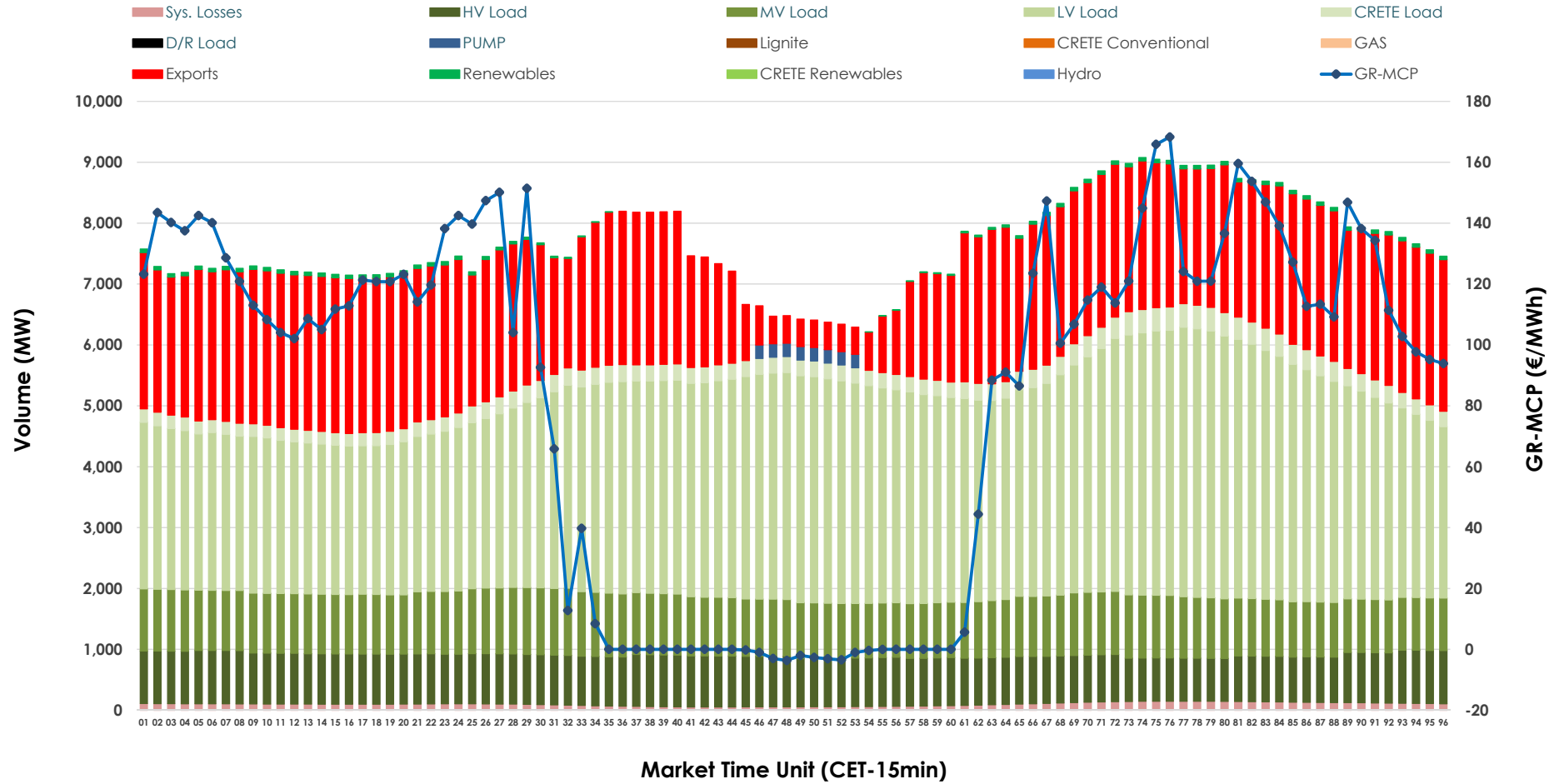


# Day-Ahead Market Outlook

07.03.2026 Day-Ahead Market - Sell



### 07.03.2026 Day-Ahead Market - Buy



### GR Bidding Zone Weekly Figures

Delivery Day	01.03	02.03	03.03	04.03	05.03	06.03	07.03
	👇 -23%	👆 100%	👉 32%	👇 -4%	👉 3%	👇 -17%	👇 -4%
<b>Avg.MCP (€/MWh)</b>	40.11	80.04	105.79	102.04	105.57	87.16	83.96
<b>Max.MCP (€/MWh)</b>	112.24	205.76	224.94	261.83	217.72	203.10	168.31
<b>Min.MCP (€/MWh)</b>	-1.03	0.00	9.90	0.01	0.79	0.00	-3.65
	👉 -1%	👉 3%	👉 3%	👉 2%	👇 -2%	👇 -4%	👇 -2%
<b>Tot.Vol(GWh)</b>	369.53	381.72	391.40	400.49	393.19	375.71	368.18

### Trades by Order Type

Delivery Day		01.03	02.03	03.03	04.03	05.03	06.03	07.03	
<b>Ord Price Type</b>		<b>Sell &amp; Buy Trades in (GWh) per Price Type</b>							<b>(%)</b>
<b>PPT</b>	(S)	110.143	97.023	93.316	92.023	84.357	88.406	94.504	51.34%
<b>HBD</b>	(S)	60.318	64.656	66.501	72.545	68.571	70.555	63.366	34.42%
<b>BLK</b>	(S)	14.306	27.861	33.700	35.572	43.620	28.667	25.786	14.01%
<b>CPL</b>	(S)	0.000	1.320	2.182	0.106	0.050	0.226	0.435	0.24%
<b>PPT</b>	(B)	12.531	12.663	12.979	12.356	12.083	13.638	12.736	6.92%
<b>HBD</b>	(B)	130.663	144.885	144.065	145.411	144.972	144.877	133.811	72.69%
<b>BLK</b>	(B)	0.000	0.000	0.000	0.000	0.000	0.000	0.000	0.00%
<b>CPL</b>	(B)	41.573	33.312	38.654	42.479	39.542	29.338	37.545	20.39%
		<b>Sell &amp; Buy Orders Traded per Price Type</b>							<b>(%)</b>
<b>PPT</b>	(S)	2304	2276	2284	2119	1990	2001	2063	43.69%
<b>HBD</b>	(S)	2254	2788	2973	2968	3040	2910	2647	56.06%
<b>BLK</b>	(S)	5	12	13	13	15	13	12	0.25%
<b>PPT</b>	(B)	2301	2187	2194	2196	2224	2268	2377	37.83%
<b>HBD</b>	(B)	4038	3969	3908	3999	4023	4030	3907	62.17%
<b>BLK</b>	(B)	0	0	0	0	0	0	0	0.00%

**MCP** Market Clearing Price (€/MWh)  
**PPT** Priority Price-Taking  
**HBD** Hybrid  
**BLK** Block  
**CPL** Market Coupling Flow

### Trade's Volume Mix

		Sell - MWh	Buy - MWh	
<b>Lignite</b>	(4.5%)	8,213	0	(0.0%)
<b>Crete Conv.</b>	(0.0%)	0	0	(0.0%)
<b>Gas</b>	(29.4%)	54,179	0	(0.0%)
<b>Hydro</b>	(16.2%)	29,867	0	(0.0%)
<b>Imports</b>	(3.5%)	6,457		
<b>RES</b>	(44.4%)	81,723	882	(0.5%)
<b>Crete RES</b>	(2.0%)	3,652	0	(0.0%)
<b>HV Load</b>	(0.0%)	0	19,331	(10.5%)
<b>MV Load</b>	(0.0%)	0	23,390	(12.7%)
<b>LV Load</b>	(0.0%)	0	79,812	(43.4%)
<b>Crete Load</b>	(0.0%)	0	6,622	(3.6%)
<b>Pumping</b>	(0.0%)	0	440	(0.2%)
<b>Exports</b>			51,236	(27.8%)
<b>Sys.Losses</b>	(0.0%)	0	2,379	(1.3%)
<b>D/R Load</b>	(0.0%)	0	0	(0.0%)

