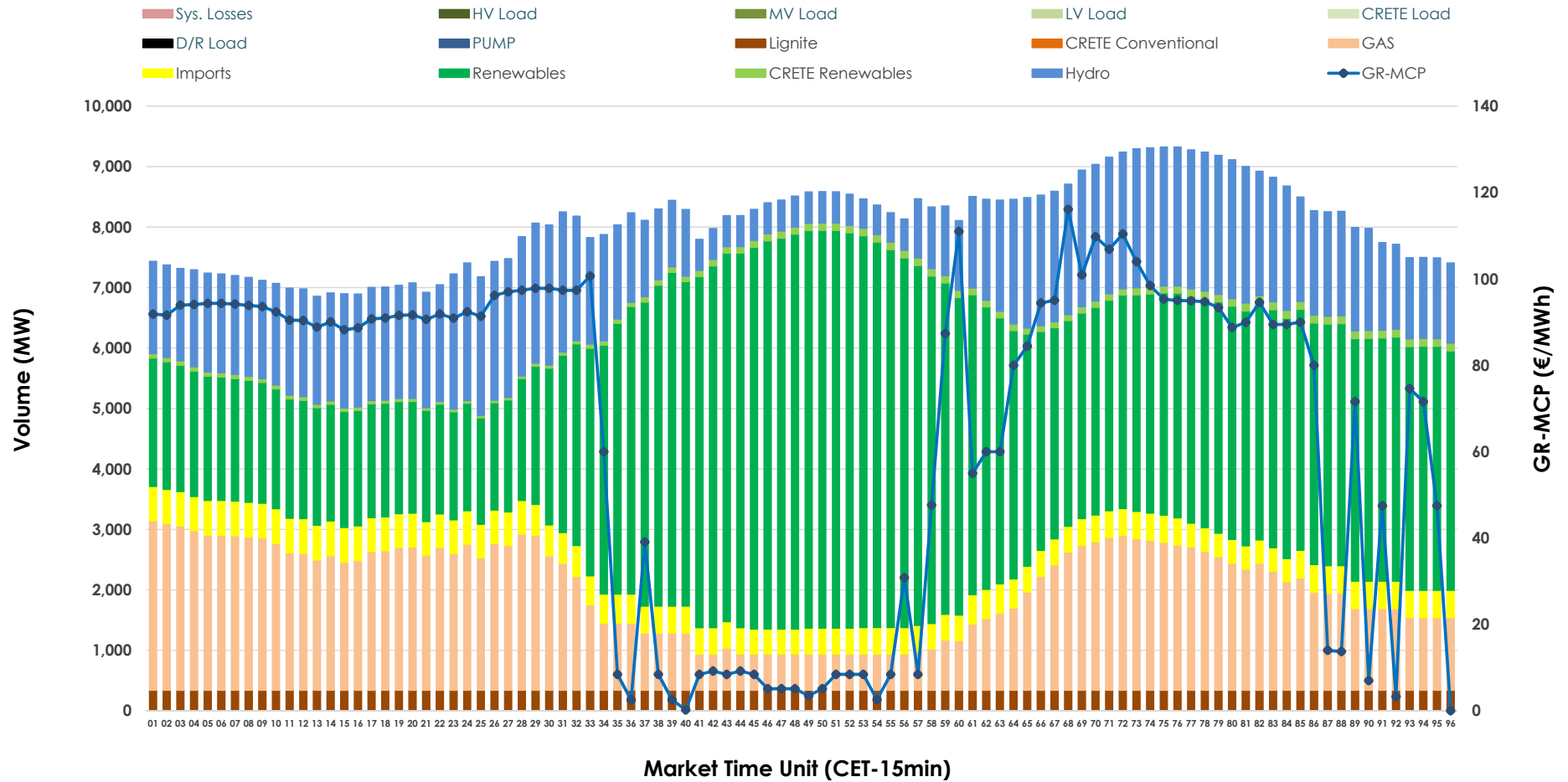


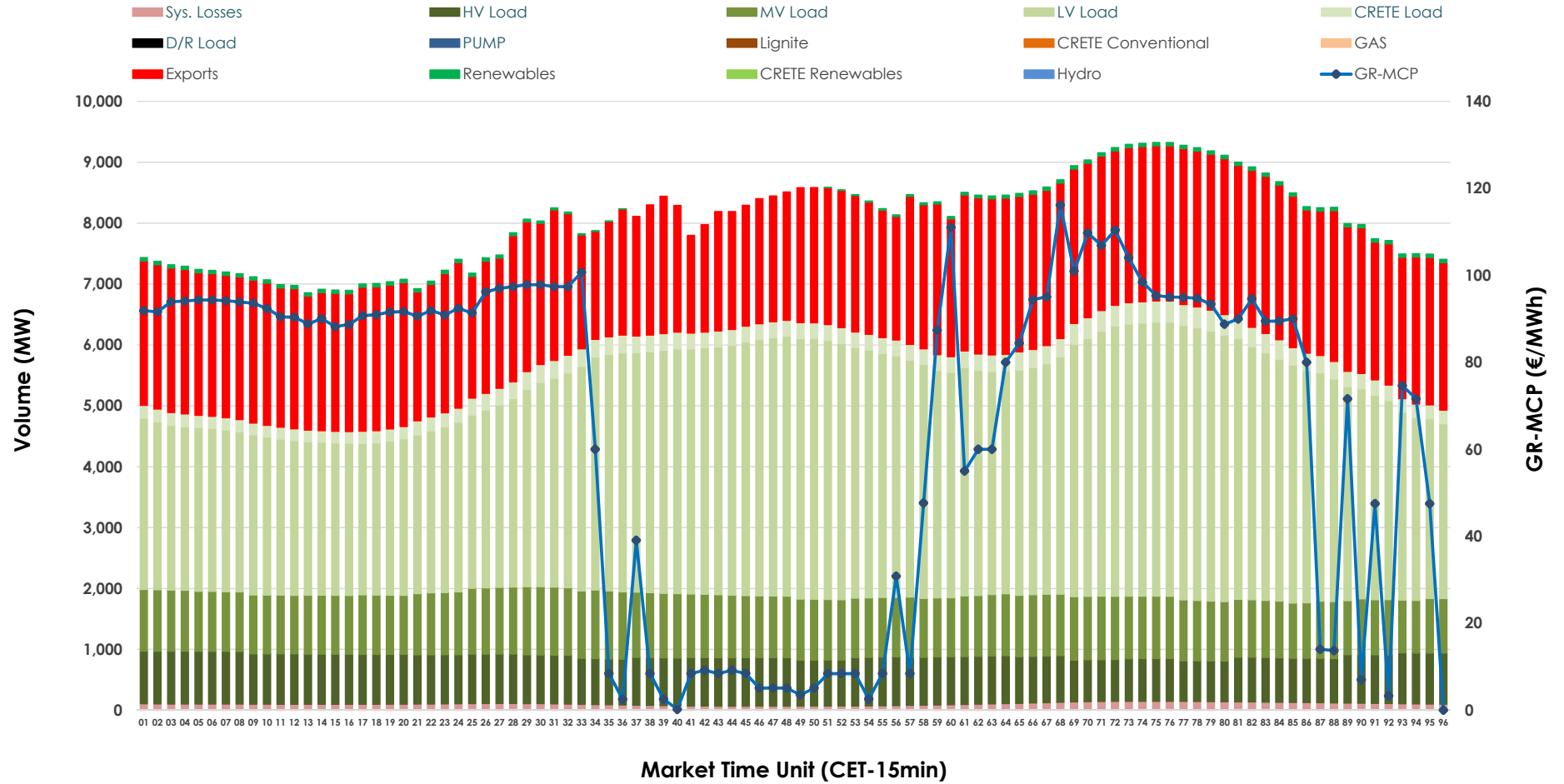


# Day-Ahead Market Outlook

## 14.02.2026 Day-Ahead Market - Sell



### 14.02.2026 Day-Ahead Market - Buy



### GR Bidding Zone Weekly Figures

Delivery Day	08.02	09.02	10.02	11.02	12.02	13.02	14.02
	↗ 26%	↕ 50%	↘ -10%	↘ -11%	↘ -19%	↗ 9%	↘ -28%
<b>Avg.MCP (€/MWh)</b>	87.19	130.53	117.00	103.57	83.74	91.43	65.70
<b>Max.MCP (€/MWh)</b>	137.01	217.65	183.80	145.00	113.10	141.81	116.13
<b>Min.MCP (€/MWh)</b>	0.01	96.06	89.31	35.29	0.01	0.01	0.01
	↘ -4%	↗ 4%	↗ 5%	↔ 0%	↗ 3%	↘ -4%	↘ -4%
<b>Tot.Vol(GWh)</b>	372.80	387.84	407.28	409.25	420.46	404.98	386.76

### Trades by Order Type

Delivery Day		08.02	09.02	10.02	11.02	12.02	13.02	14.02	
<b>Ord Price Type</b>		<b>Sell &amp; Buy Trades in (GWh) per Price Type</b>							<b>(%)</b>
<b>PPT</b>	(S)	90.104	88.222	95.796	102.018	115.484	104.129	102.419	52.96%
<b>HBD</b>	(S)	70.823	62.341	69.091	66.237	72.762	68.013	69.070	35.72%
<b>BLK</b>	(S)	25.473	40.788	36.594	35.597	21.985	28.714	21.890	11.32%
<b>CPL</b>	(S)	0.000	2.568	2.161	0.771	0.000	1.634	0.000	0.00%
<b>PPT</b>	(B)	13.616	13.693	13.846	13.499	13.165	13.224	12.407	6.42%
<b>HBD</b>	(B)	132.020	145.360	150.538	150.234	150.839	146.580	137.891	71.31%
<b>BLK</b>	(B)	0.000	0.000	0.000	0.000	0.000	0.000	0.000	0.00%
<b>CPL</b>	(B)	40.764	34.865	39.257	40.890	46.227	42.686	43.080	22.28%
		<b>Sell &amp; Buy Orders Traded per Price Type</b>							<b>(%)</b>
<b>PPT</b>	(S)	2129	2318	2423	2522	2454	2309	2270	45.02%
<b>HBD</b>	(S)	2697	3008	2939	2839	2701	2811	2763	54.80%
<b>BLK</b>	(S)	11	12	8	10	13	11	9	0.18%
<b>PPT</b>	(B)	2334	2236	2234	2218	2237	2231	2341	35.74%
<b>HBD</b>	(B)	4200	3870	4029	4018	4097	4012	4210	64.26%
<b>BLK</b>	(B)	0	0	0	0	0	0	0	0.00%

**MCP** Market Clearing Price (€/MWh)  
**PPT** Priority Price-Taking  
**HBD** Hybrid  
**BLK** Block  
**CPL** Market Coupling Flow

### Trade's Volume Mix

		Sell - MWh	Buy - MWh	
<b>Lignite</b>	(4.2%)	8,160	0	(0.0%)
<b>Crete Conv.</b>	(0.0%)	0	0	(0.0%)
<b>Gas</b>	(21.2%)	40,930	0	(0.0%)
<b>Hydro</b>	(20.0%)	38,667	0	(0.0%)
<b>Imports</b>	(5.9%)	11,486		
<b>RES</b>	(47.5%)	91,851	968	(0.5%)
<b>Crete RES</b>	(1.2%)	2,284	0	(0.0%)
<b>HV Load</b>	(0.0%)	0	18,804	(9.7%)
<b>MV Load</b>	(0.0%)	0	24,020	(12.4%)
<b>LV Load</b>	(0.0%)	0	85,188	(44.1%)
<b>Crete Load</b>	(0.0%)	0	6,370	(3.3%)
<b>Pumping</b>	(0.0%)	0	0	(0.0%)
<b>Exports</b>			55,550	(28.7%)
<b>Sys.Losses</b>	(0.0%)	0	2,479	(1.3%)
<b>D/R Load</b>	(0.0%)	0	0	(0.0%)

