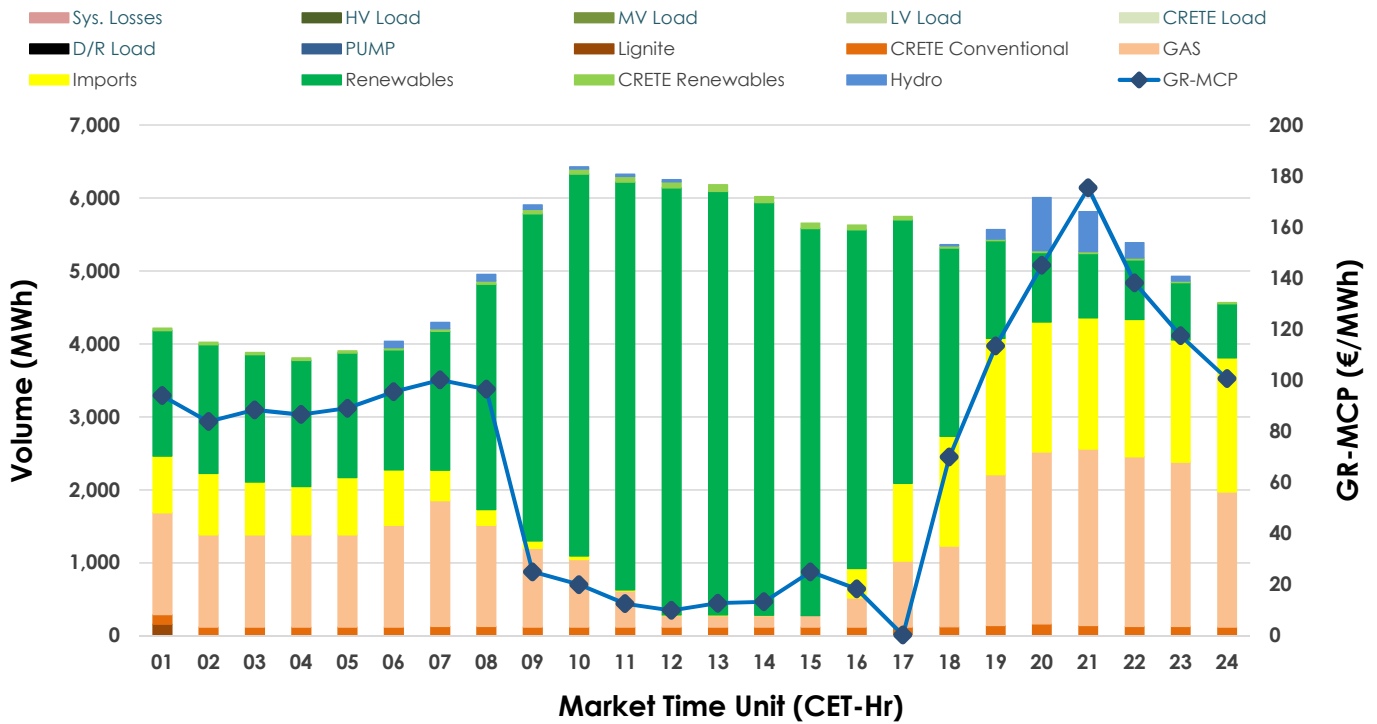
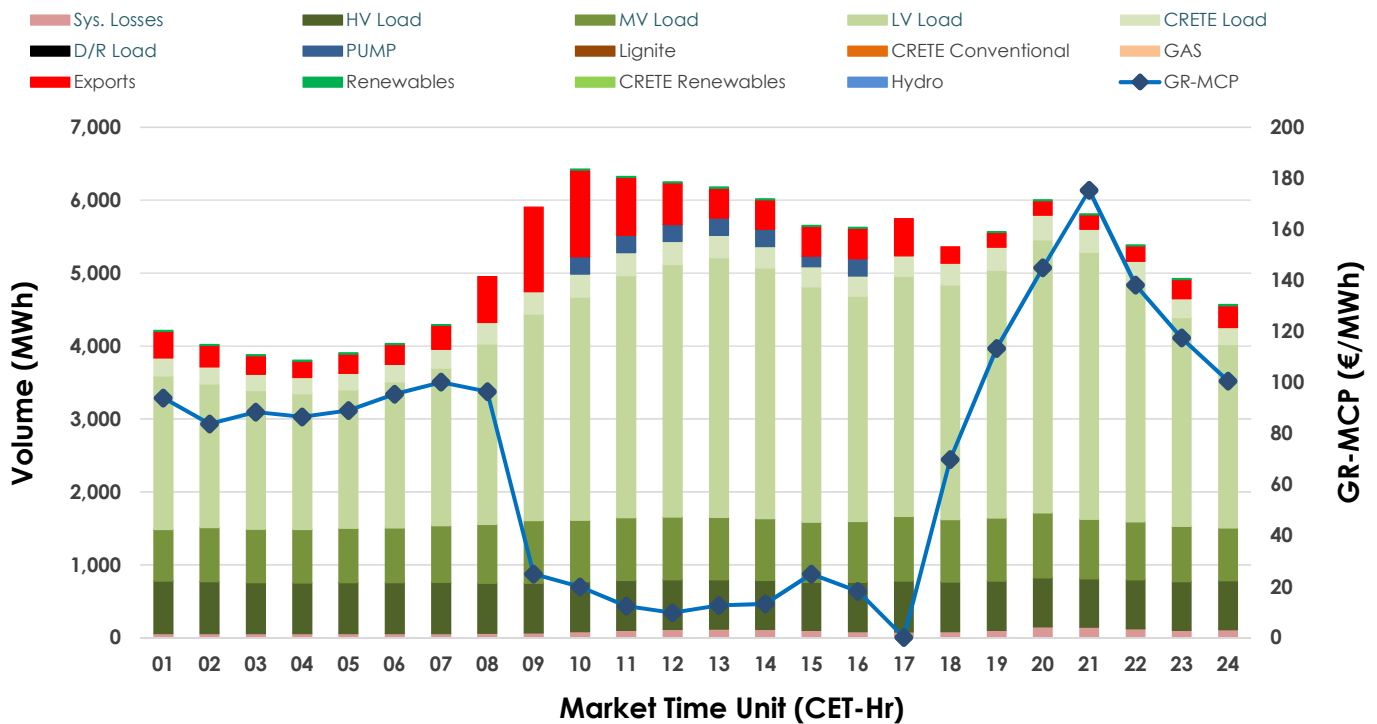


19.04.2025 Day-Ahead Market - Sell



19.04.2025 Day-Ahead Market - Buy



GR Bidding Zone Weekly Figures

| Delivery Day | 13.04 | 14.04 | 15.04 | 16.04 | 17.04 | 18.04 | 19.04 |
|-----------------|--------|--------|--------|--------|--------|--------|--------|
| | 📉-9% | 📈57% | 📉-14% | 📉-22% | 📉-3% | 📉-8% | 📉-2% |
| Avg.MCP (€/MWh) | 78.45 | 123.36 | 106.56 | 83.16 | 80.67 | 73.87 | 72.14 |
| Max.MCP (€/MWh) | 216.00 | 222.24 | 153.20 | 167.99 | 133.88 | 139.68 | 175.37 |
| Min.MCP (€/MWh) | 0.21 | 85.75 | 83.12 | 0.04 | 5.11 | 5.00 | 0.20 |
| | 📉-7% | 📈5% | 📉-1% | 📈3% | 📉-6% | 📉-7% | 📈1% |
| Tot.Vol(GWh) | 265.94 | 278.10 | 274.05 | 283.14 | 266.46 | 246.85 | 249.80 |

Trades by Order Type

| Delivery Day | 13.04 | 14.04 | 15.04 | 16.04 | 17.04 | 18.04 | 19.04 |
|--------------|---|---------|---------|---------|---------|---------|---------|
| Order P.T | Sell & Buy Trades in (GWh) per Price Type | | | | | | |
| PPT (S) | 44.908 | 35.258 | 33.870 | 39.337 | 40.426 | 46.359 | 41.126 |
| HBD (S) | 49.560 | 45.792 | 51.235 | 56.108 | 52.953 | 49.302 | 49.479 |
| BLK (S) | 17.174 | 35.710 | 29.284 | 22.720 | 22.407 | 18.555 | 21.703 |
| CPL (S) | 21.327 | 22.290 | 22.635 | 23.405 | 17.444 | 9.209 | 12.593 |
| PPT (B) | 12.420 | 13.104 | 12.063 | 13.178 | 12.361 | 12.512 | 10.517 |
| HBD (B) | 120.549 | 125.945 | 124.962 | 128.391 | 120.390 | 108.302 | 112.678 |
| BLK (B) | | | | | | | |
| CPL (B) | | | | | 0.479 | 2.610 | 1.706 |
| | Sell & Buy Orders Traded per Price Type | | | | | | |
| PPT (S) | 490 | 509 | 472 | 404 | 400 | 379 | 392 |
| HBD (S) | 847 | 1034 | 1133 | 903 | 897 | 766 | 794 |
| BLK (S) | 96 | 181 | 156 | 121 | 118 | 104 | 121 |
| PPT (B) | 600 | 603 | 574 | 613 | 625 | 646 | 573 |
| HBD (B) | 1330 | 1234 | 1210 | 1345 | 1368 | 1382 | 1354 |
| BLK (B) | | | | | | | |

| | |
|------------|-------------------------------|
| MCP | Market Clearing Price (€/MWh) |
| PPT | Priority Price-Taking |
| HBD | Hybrid |
| BLK | Block |
| CPL | Market Coupling Flow |

Trade's Volume Mix

| | Sell - MWh | Buy - MWh | |
|-------------|----------------|-----------|---------|
| Lignite | (0.1%) 158 | 0 | (0.0%) |
| Crete Conv. | (2.4%) 2,983 | 0 | (0.0%) |
| Gas | (23.9%) 29,835 | 0 | (0.0%) |
| Hydro | (1.7%) 2,066 | 0 | (0.0%) |
| Imports | (15.4%) 19,201 | | |
| RES | (55.7%) 69,590 | 276 | (0.2%) |
| Crete RES | (0.9%) 1,067 | 0 | (0.0%) |
| HV Load | (0.0%) 0 | 16,404 | (13.1%) |
| MV Load | (0.0%) 0 | 19,363 | (15.5%) |
| LV Load | (0.0%) 0 | 68,289 | (54.7%) |
| Crete Load | (0.0%) 0 | 6,707 | (5.4%) |
| Pumping | (0.0%) 0 | 1,555 | (1.2%) |
| Exports | | 10,079 | (8.1%) |
| Sys.Losses | (0.0%) 0 | 2,228 | (1.8%) |
| D/R Load | (0.0%) 0 | 0 | (0.0%) |

