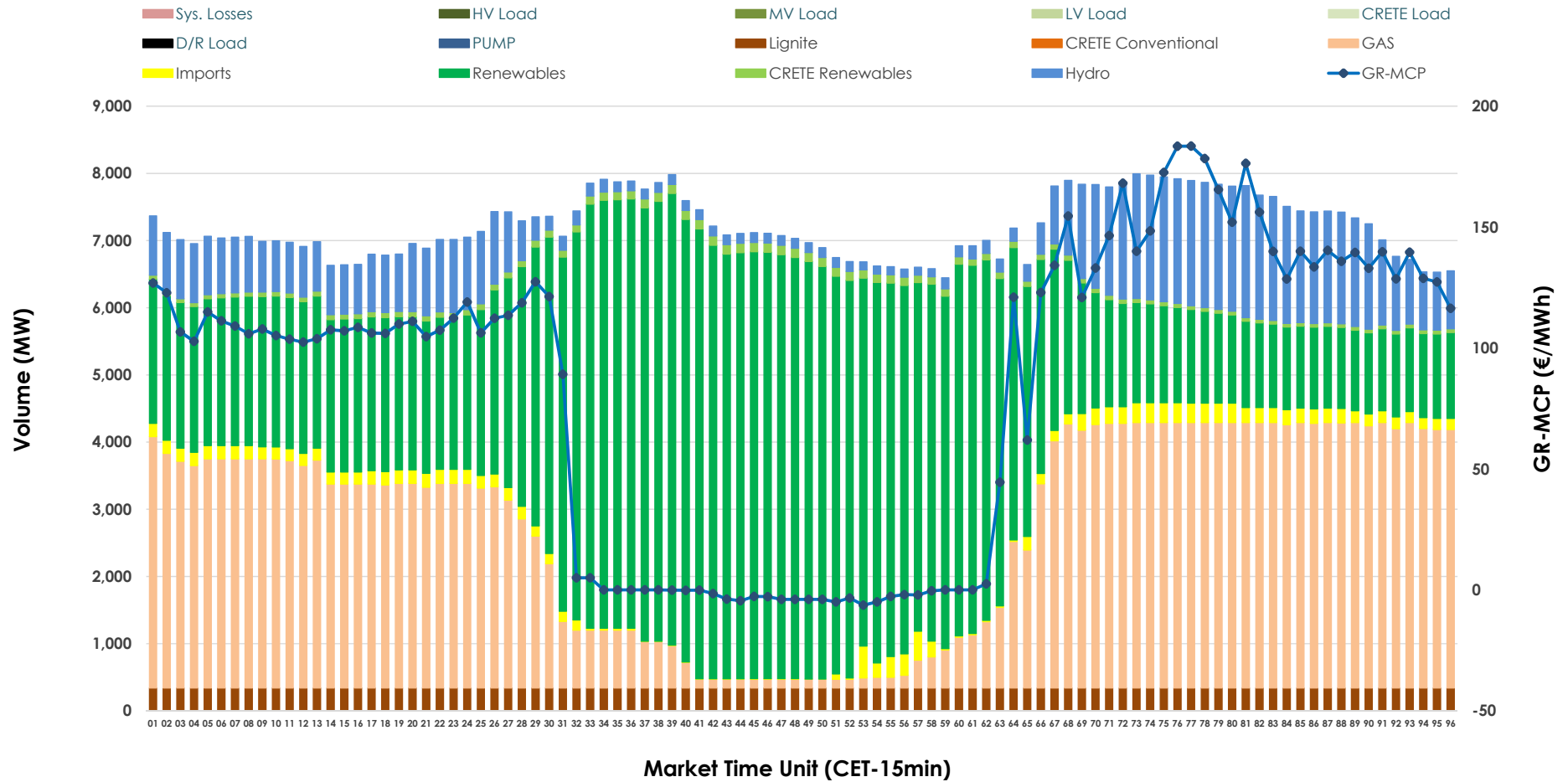


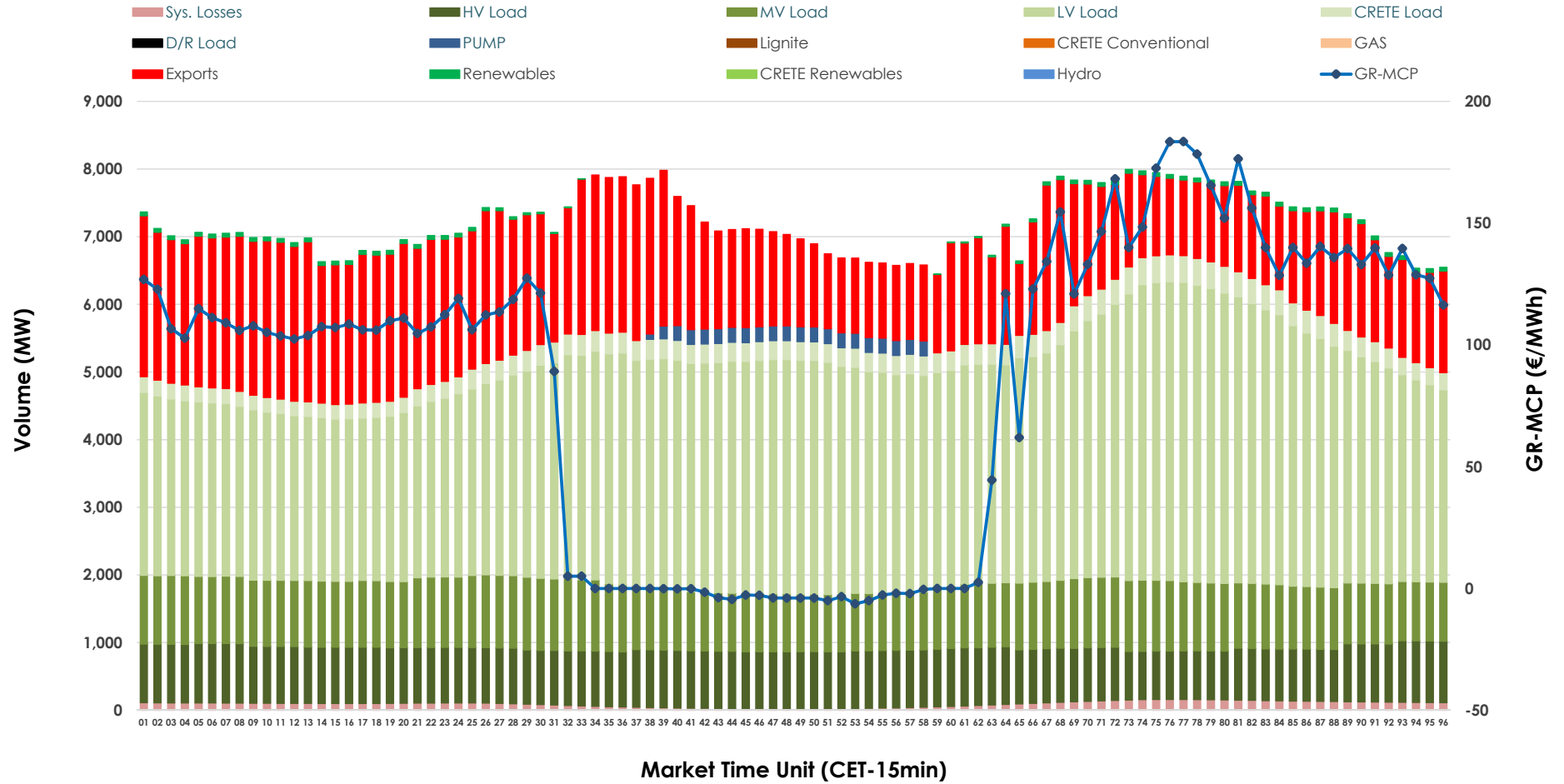


# Day-Ahead Market Outlook

14.03.2026 Day-Ahead Market - Sell



### 14.03.2026 Day-Ahead Market - Buy



### GR Bidding Zone Weekly Figures

Delivery Day	08.03	09.03	10.03	11.03	12.03	13.03	14.03
	↘ -2%	↗ 1%	↗ 2%	↗ 10%	↗ 16%	↘ -17%	↘ -6%
<b>Avg.MCP (€/MWh)</b>	82.31	82.94	84.90	93.35	108.24	89.55	84.39
<b>Max.MCP (€/MWh)</b>	172.04	247.48	253.89	240.49	247.52	215.45	183.48
<b>Min.MCP (€/MWh)</b>	-1.83	-0.01	0.00	0.00	0.00	-0.10	-6.30
	↘ -5%	↗ 7%	↘ -2%	↘ -8%	↗ 5%	↗ 1%	↘ -4%
<b>Tot.Vol(GWh)</b>	351.54	377.07	369.77	340.80	358.00	362.26	346.25

### Trades by Order Type

Delivery Day		08.03	09.03	10.03	11.03	12.03	13.03	14.03	
<b>Ord Price Type</b>		<b>Sell &amp; Buy Trades in (GWh) per Price Type</b>							<b>(%)</b>
<b>PPT</b>	(S)	93.458	103.168	92.307	79.824	79.190	88.806	81.903	47.31%
<b>HBD</b>	(S)	60.465	72.209	67.169	58.548	66.823	60.729	63.501	36.68%
<b>BLK</b>	(S)	21.848	13.159	25.386	26.866	29.533	31.267	27.207	15.72%
<b>CPL</b>	(S)	0.000	0.000	0.022	5.164	3.454	0.328	0.515	0.30%
<b>PPT</b>	(B)	12.023	13.216	12.949	12.840	13.965	14.237	14.168	8.18%
<b>HBD</b>	(B)	126.370	140.244	142.529	138.311	138.400	139.218	131.135	75.75%
<b>BLK</b>	(B)	0.000	0.000	0.000	0.000	0.000	0.000	0.000	0.00%
<b>CPL</b>	(B)	37.378	35.075	29.406	19.251	26.635	27.674	27.823	16.07%
		<b>Sell &amp; Buy Orders Traded per Price Type</b>							<b>(%)</b>
<b>PPT</b>	(S)	2035	2104	2050	1996	1979	1976	1847	40.82%
<b>HBD</b>	(S)	2482	2558	2512	2905	3046	2552	2666	58.92%
<b>BLK</b>	(S)	11	4	13	10	14	14	12	0.27%
<b>PPT</b>	(B)	2257	2354	2339	2312	2311	2364	2364	37.17%
<b>HBD</b>	(B)	3760	4001	4076	4033	3862	4085	3996	62.83%
<b>BLK</b>	(B)	0	0	0	0	0	0	0	0.00%

**MCP** Market Clearing Price (€/MWh)  
**PPT** Priority Price-Taking  
**HBD** Hybrid  
**BLK** Block  
**CPL** Market Coupling Flow

### Trade's Volume Mix

		Sell - MWh	Buy - MWh	
<b>Lignite</b>	(4.7%)	8,160	0	(0.0%)
<b>Crete Conv.</b>	(0.0%)	0	0	(0.0%)
<b>Gas</b>	(33.7%)	58,298	0	(0.0%)
<b>Hydro</b>	(11.1%)	19,259	0	(0.0%)
<b>Imports</b>	(2.2%)	3,885		
<b>RES</b>	(47.0%)	81,448	842	(0.5%)
<b>Crete RES</b>	(1.2%)	2,076	0	(0.0%)
<b>HV Load</b>	(0.0%)	0	19,779	(11.4%)
<b>MV Load</b>	(0.0%)	0	23,045	(13.3%)
<b>LV Load</b>	(0.0%)	0	77,930	(45.0%)
<b>Crete Load</b>	(0.0%)	0	7,043	(4.1%)
<b>Pumping</b>	(0.0%)	0	1,112	(0.6%)
<b>Exports</b>			41,177	(23.8%)
<b>Sys.Losses</b>	(0.0%)	0	2,197	(1.3%)
<b>D/R Load</b>	(0.0%)	0	0	(0.0%)

