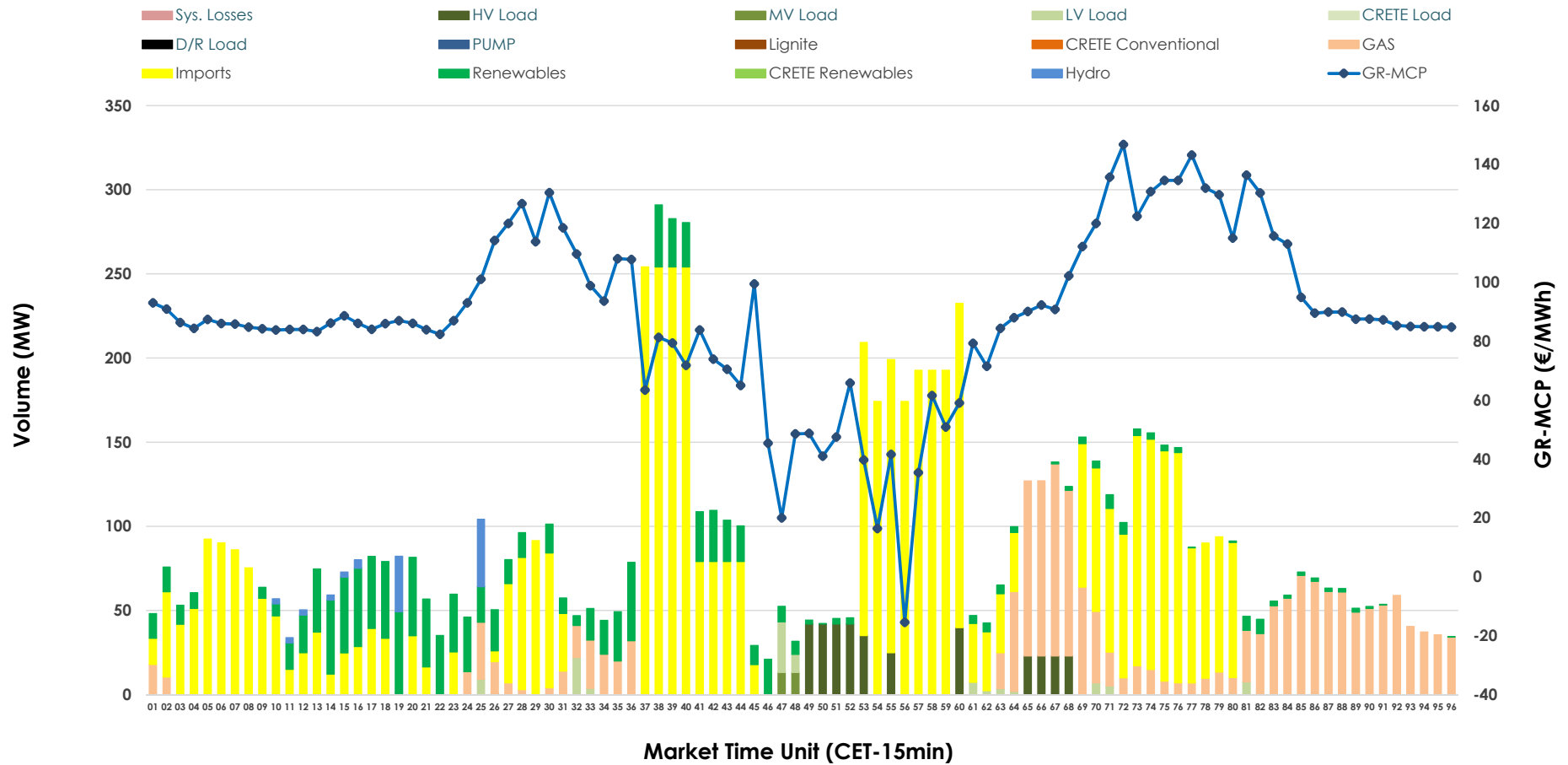


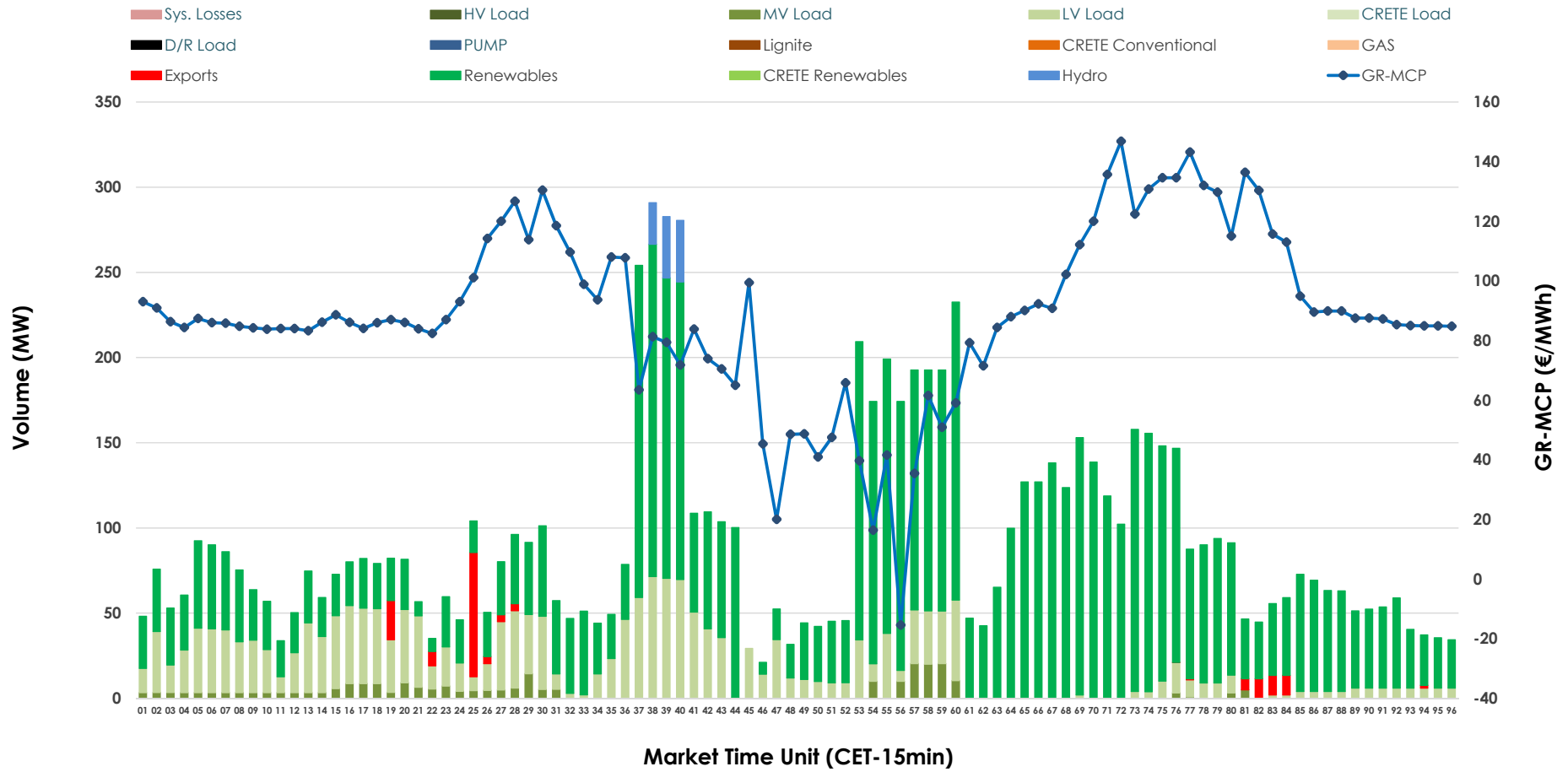


IDA '2' Market Outlook

13.02.2026 IDA '2' Market - Sell



13.02.2026 IDA '2' Market - Buy



GR Bidding Zone Weekly Figures

Delivery Day	07.02	08.02	09.02	10.02	11.02	12.02	13.02
	👇 -17%	👈 18%	👆 43%	👇 -14%	👇 -15%	👇 -18%	👈 12%
Avg.MCP (€/MWh)	78.28	92.03	131.37	112.78	95.73	78.95	88.63
Max.MCP (€/MWh)	147.50	136.14	217.55	184.09	159.65	112.99	146.81
Min.MCP (€/MWh)	-2.23	8.64	91.39	85.49	55.29	0.01	-15.43
	👆 226%	👇 -27%	👇 -30%	👈 30%	👇 -14%	👈 15%	👉 0%
Tot.Vol(GWh)	6.80	4.96	3.49	4.54	3.91	4.49	4.47

Trades by Order Type

Delivery Day	07.02	08.02	09.02	10.02	11.02	12.02	13.02	
Ord Price Type	Sell & Buy Trades in (GWh) per Price Type							(%)
PPT (S)	0.000	0.000	0.000	0.000	0.000	0.000	0.000	0.00%
HBD (S)	2.916	2.161	1.173	2.028	1.654	2.213	0.882	39.44%
BLK (S)	0.000	0.000	0.000	0.000	0.000	0.000	0.000	0.00%
CPL (S)	0.481	0.320	0.572	0.240	0.304	0.034	1.354	60.56%
PPT (B)	0.000	0.000	0.000	0.000	0.000	0.000	0.000	0.00%
HBD (B)	3.052	2.212	1.435	1.857	1.152	2.160	2.197	98.21%
BLK (B)	0.000	0.000	0.000	0.000	0.000	0.000	0.000	0.00%
CPL (B)	0.346	0.269	0.311	0.411	0.806	0.086	0.040	1.79%
Ord Price Type	Sell & Buy Orders Traded per Price Type							(%)
PPT (S)	0	0	0	0	0	0	0	0.00%
HBD (S)	338	210	274	173	264	270	160	100.00%
BLK (S)	0	0	0	0	0	0	0	0.00%
PPT (B)	0	0	0	0	0	0	0	0.00%
HBD (B)	389	477	493	477	470	456	614	100.00%
BLK (B)	0	0	0	0	0	0	0	0.00%

- MCP** Market Clearing Price (€/MWh)
- PPT** Priority Price-Taking
- HBD** Hybrid
- BLK** Block
- CPL** Market Coupling Flow

Trade's Volume Mix

	Sell - MWh	Buy - MWh	
Lignite (0.0%)	0	0	(0.0%)
Crete Conv. (0.0%)	0	0	(0.0%)
Gas (19.8%)	442	0	(0.0%)
Hydro (1.0%)	23	24	(1.1%)
Imports (60.6%)	1,354		
RES (13.1%)	292	1,624	(72.6%)
Crete RES (0.0%)	0	0	(0.0%)
HV Load (4.0%)	90	0	(0.0%)
MV Load (0.3%)	7	66	(2.9%)
LV Load (1.2%)	28	483	(21.6%)
Crete Load (0.0%)	0	0	(0.0%)
Pumping (0.0%)	0	0	(0.0%)
Exports		40	(1.8%)
Sys.Losses (0.0%)	0	0	(0.0%)
D/R Load (0.0%)	0	0	(0.0%)

