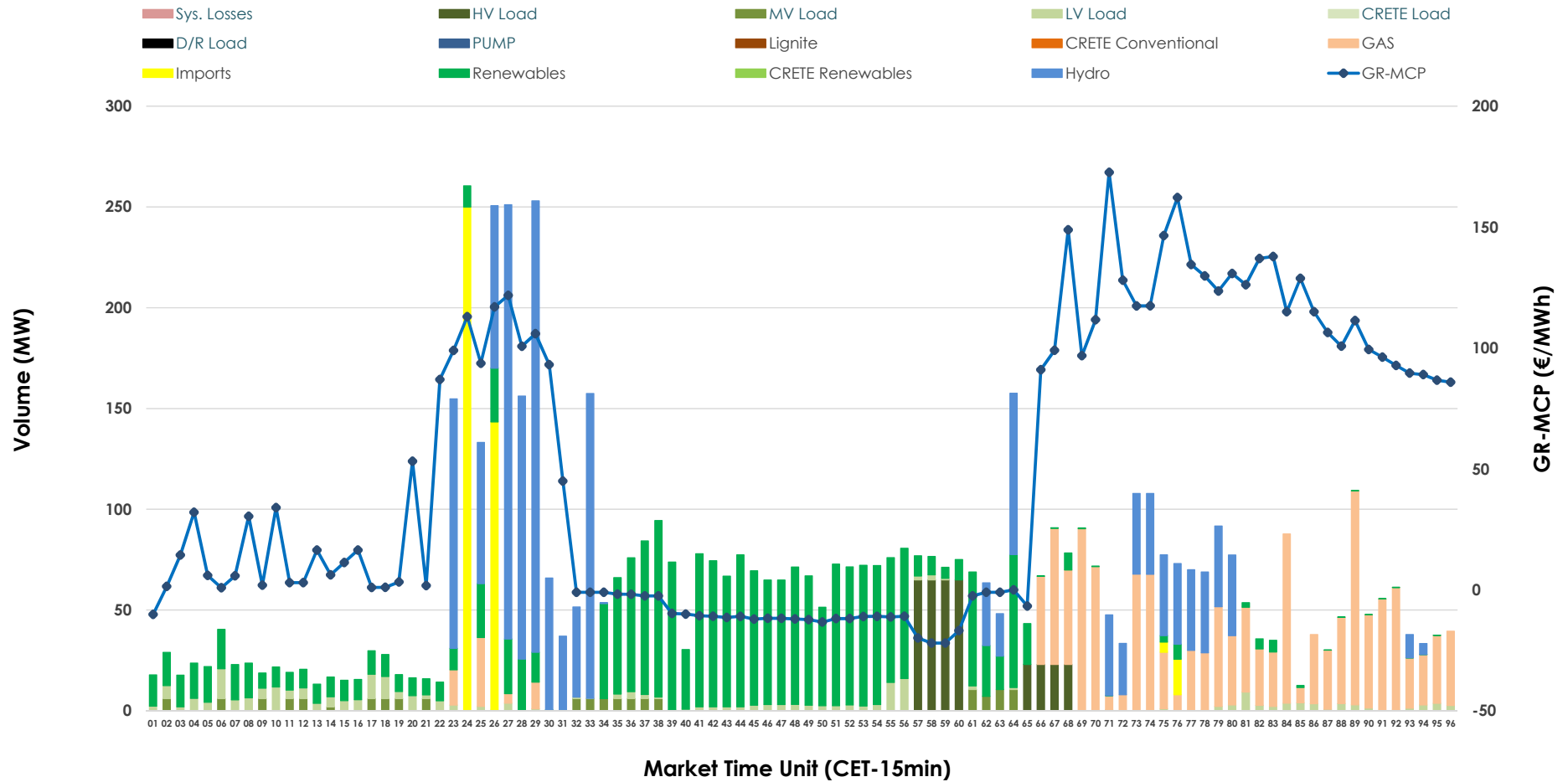


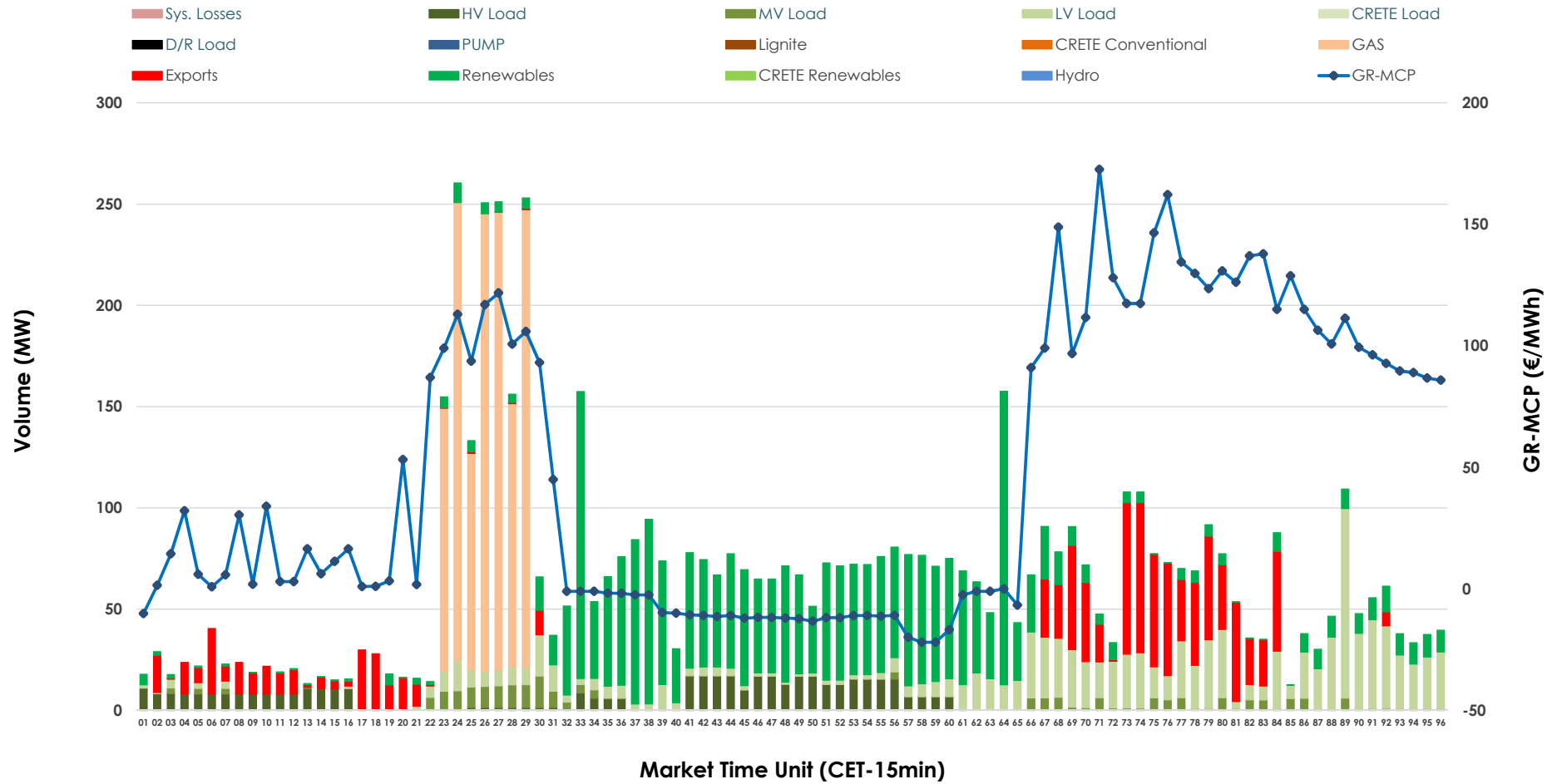


IDA '1' Market Outlook

18.02.2026 IDA '1' Market - Sell



18.02.2026 IDA '1' Market - Buy



GR Bidding Zone Weekly Figures

Delivery Day	12.02	13.02	14.02	15.02	16.02	17.02	18.02
	👇 -17%	👆 11%	👇 -27%	👇 -60%	👆 155%	👇 -12%	👇 -20%
Avg.MCP (€/MWh)	81.52	90.59	65.92	26.32	67.20	58.93	47.19
Max.MCP (€/MWh)	110.84	145.19	117.14	95.58	158.98	158.86	172.62
Min.MCP (€/MWh)	-4.17	3.01	-3.80	-5.00	-18.37	-11.05	-21.98
	👇 -44%	👆 28%	👆 121%	👇 -43%	👆 40%	👆 20%	👇 -51%
Tot.Vol(GWh)	2.41	3.08	6.81	3.90	5.47	6.57	3.22

Trades by Order Type

Delivery Day		12.02	13.02	14.02	15.02	16.02	17.02	18.02	
Ord Price Type		Sell & Buy Trades in (GWh) per Price Type							(%)
PPT	(S)	0.000	0.000	0.000	0.000	0.000	0.000	0.000	0.00%
HBD	(S)	1.156	1.287	3.373	1.951	2.634	3.176	1.505	93.54%
BLK	(S)	0.000	0.000	0.000	0.000	0.000	0.000	0.000	0.00%
CPL	(S)	0.049	0.251	0.030	0.000	0.100	0.110	0.104	6.46%
PPT	(B)	0.000	0.000	0.000	0.000	0.000	0.000	0.000	0.00%
HBD	(B)	1.095	1.246	2.776	1.797	2.555	1.507	1.359	84.46%
BLK	(B)	0.000	0.000	0.000	0.000	0.000	0.000	0.000	0.00%
CPL	(B)	0.109	0.292	0.627	0.155	0.178	1.779	0.250	15.54%
		Sell & Buy Orders Traded per Price Type							(%)
PPT	(S)	0	0	0	0	0	0	0	0.00%
HBD	(S)	135	183	346	337	110	296	196	100.00%
BLK	(S)	0	0	0	0	0	0	0	0.00%
PPT	(B)	0	0	0	0	0	0	0	0.00%
HBD	(B)	666	706	576	420	786	537	670	100.00%
BLK	(B)	0	0	0	0	0	0	0	0.00%

- MCP** Market Clearing Price (€/MWh)
- PPT** Priority Price-Taking
- HBD** Hybrid
- BLK** Block
- CPL** Market Coupling Flow

Trade's Volume Mix

	Sell - MWh	Buy - MWh	
Lignite (0.0%)	0	0	(0.0%)
Crete Conv. (0.0%)	0	0	(0.0%)
Gas (21.8%)	351	318	(19.7%)
Hydro (26.1%)	419	0	(0.0%)
Imports (6.5%)	104		
RES (33.7%)	542	585	(36.4%)
Crete RES (0.0%)	0	0	(0.0%)
HV Load (5.5%)	88	114	(7.1%)
MV Load (2.1%)	35	56	(3.5%)
LV Load (4.4%)	71	286	(17.8%)
Crete Load (0.0%)	0	0	(0.0%)
Pumping (0.0%)	0	0	(0.0%)
Exports		250	(15.5%)
Sys.Losses (0.0%)	0	0	(0.0%)
D/R Load (0.0%)	0	0	(0.0%)

