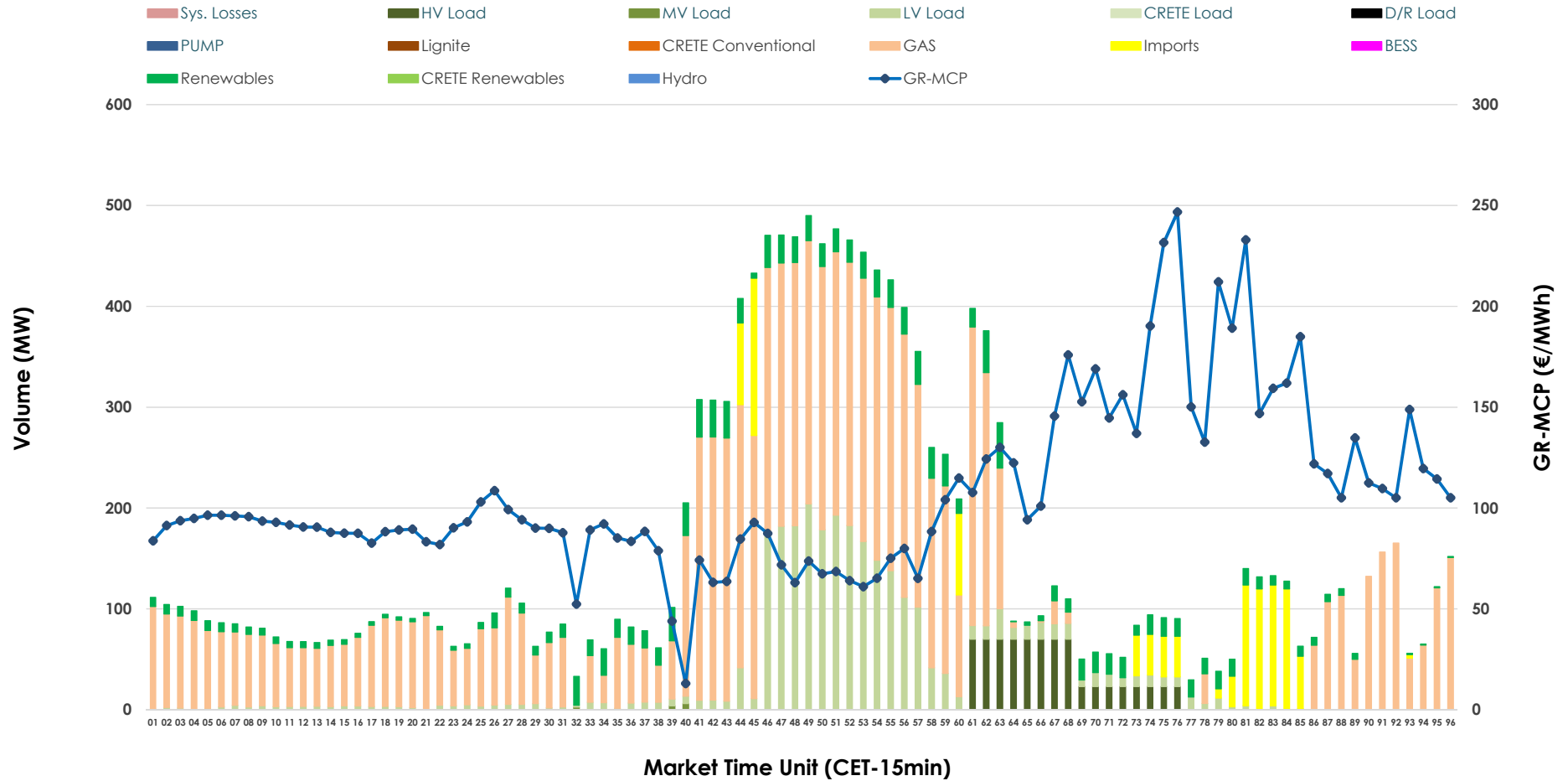


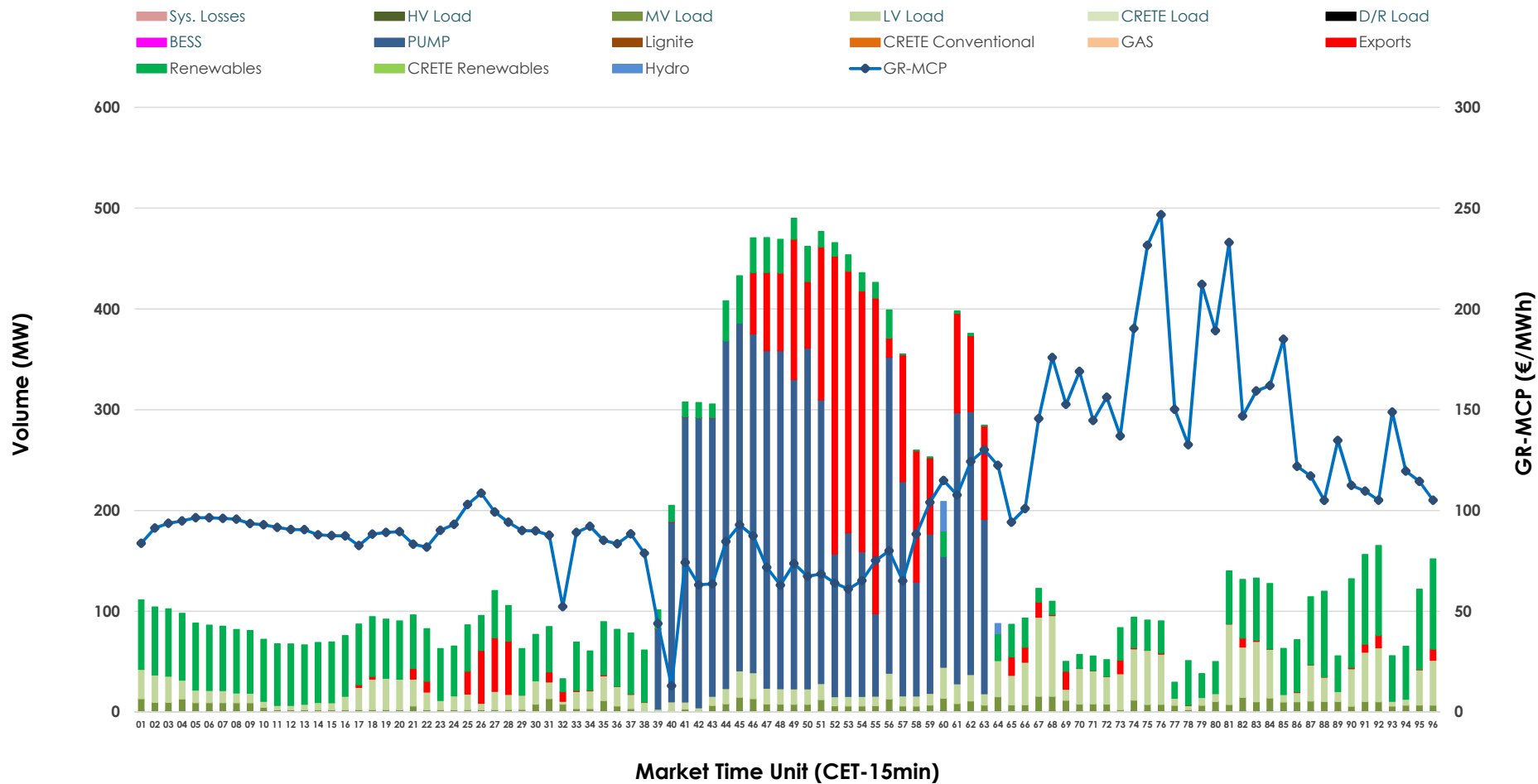


# IDA '1' Market Outlook

20.03.2026 IDA '1' Market - Sell



### 20.03.2026 IDA '1' Market - Buy



### GR Bidding Zone Weekly Figures

Delivery Day	14.03	15.03	16.03	17.03	18.03	19.03	20.03
	↗ 4%	↘ -3%	↗ 26%	↗ 16%	↘ -23%	↗ 12%	↗ 7%
<b>Avg.MCP (€/MWh)</b>	81.45	78.90	99.43	114.99	89.03	99.89	107.18
<b>Max.MCP (€/MWh)</b>	183.47	158.04	199.06	209.10	160.11	216.29	246.73
<b>Min.MCP (€/MWh)</b>	-17.57	-15.50	13.78	48.13	1.56	4.00	13.00
	↘ -36%	↘ -20%	↘ -1%	↗ 58%			↗ 192%
<b>Tot.Vol(GWh)</b>	3.37	2.69	2.67	4.22	N/M	2.63	7.69

### Trades by Order Type

Delivery Day		14.03	15.03	16.03	17.03	18.03	19.03	20.03	
<b>Ord Price Type</b>		Sell & Buy Trades in (GWh) per Price Type							(%)
<b>PPT</b>	(S)	0.000	0.000	0.000	0.000	0.000	0.000	0.000	0.00%
<b>HBD</b>	(S)	1.018	0.554	0.860	1.061	0.000	1.168	3.581	93.15%
<b>BLK</b>	(S)	0.000	0.000	0.000	0.000	0.000	0.000	0.000	0.00%
<b>CPL</b>	(S)	0.665	0.793	0.473	1.049	0.000	0.148	0.263	6.85%
<b>PPT</b>	(B)	0.000	0.000	0.000	0.000	0.000	0.000	0.000	0.00%
<b>HBD</b>	(B)	1.503	1.282	1.083	1.968	0.000	1.146	3.175	82.59%
<b>BLK</b>	(B)	0.000	0.000	0.000	0.000	0.000	0.000	0.000	0.00%
<b>CPL</b>	(B)	0.180	0.066	0.251	0.142	0.000	0.170	0.669	17.41%
		Sell & Buy Orders Traded per Price Type							(%)
<b>PPT</b>	(S)	0	0	0	0	0	0	0	0.00%
<b>HBD</b>	(S)	327	203	156	209	291	216	269	100.00%
<b>BLK</b>	(S)	0	0	0	0	0	0	0	0.00%
<b>PPT</b>	(B)	0	0	0	0	0	0	0	0.00%
<b>HBD</b>	(B)	882	715	761	835	802	790	988	100.00%
<b>BLK</b>	(B)	0	0	0	0	0	0	0	0.00%

- MCP** Market Clearing Price (€/MWh)
- PPT** Priority Price-Taking
- HBD** Hybrid
- BLK** Block
- CPL** Market Coupling Flow

### Trade's Volume Mix

	Sell - MWh	Buy - MWh	
<b>Lignite</b> (0.0%)	0	0	(0.0%)
<b>Crete Conv.</b> (0.0%)	0	0	(0.0%)
<b>Gas</b> (62.6%)	2,408	0	(0.0%)
<b>Hydro</b> (0.0%)	0	10	(0.3%)
<b>Imports</b> (6.8%)	263		
<b>RES</b> (9.0%)	348	999	(26.0%)
<b>Crete RES</b> (0.0%)	0	0	(0.0%)
<b>BESS</b> (0.0%)	0	0	(0.0%)
<b>HV Load</b> (4.8%)	186	36	(0.9%)
<b>MV Load</b> (0.1%)	3	141	(3.7%)
<b>LV Load</b> (16.6%)	637	524	(13.6%)
<b>Crete Load</b> (0.0%)	0	0	(0.0%)
<b>Pumping</b> (0.0%)	0	1,466	(38.1%)
<b>Exports</b>		669	(17.4%)
<b>Sys.Losses</b> (0.0%)	0	0	(0.0%)
<b>D/R Load</b> (0.0%)	0	0	(0.0%)

