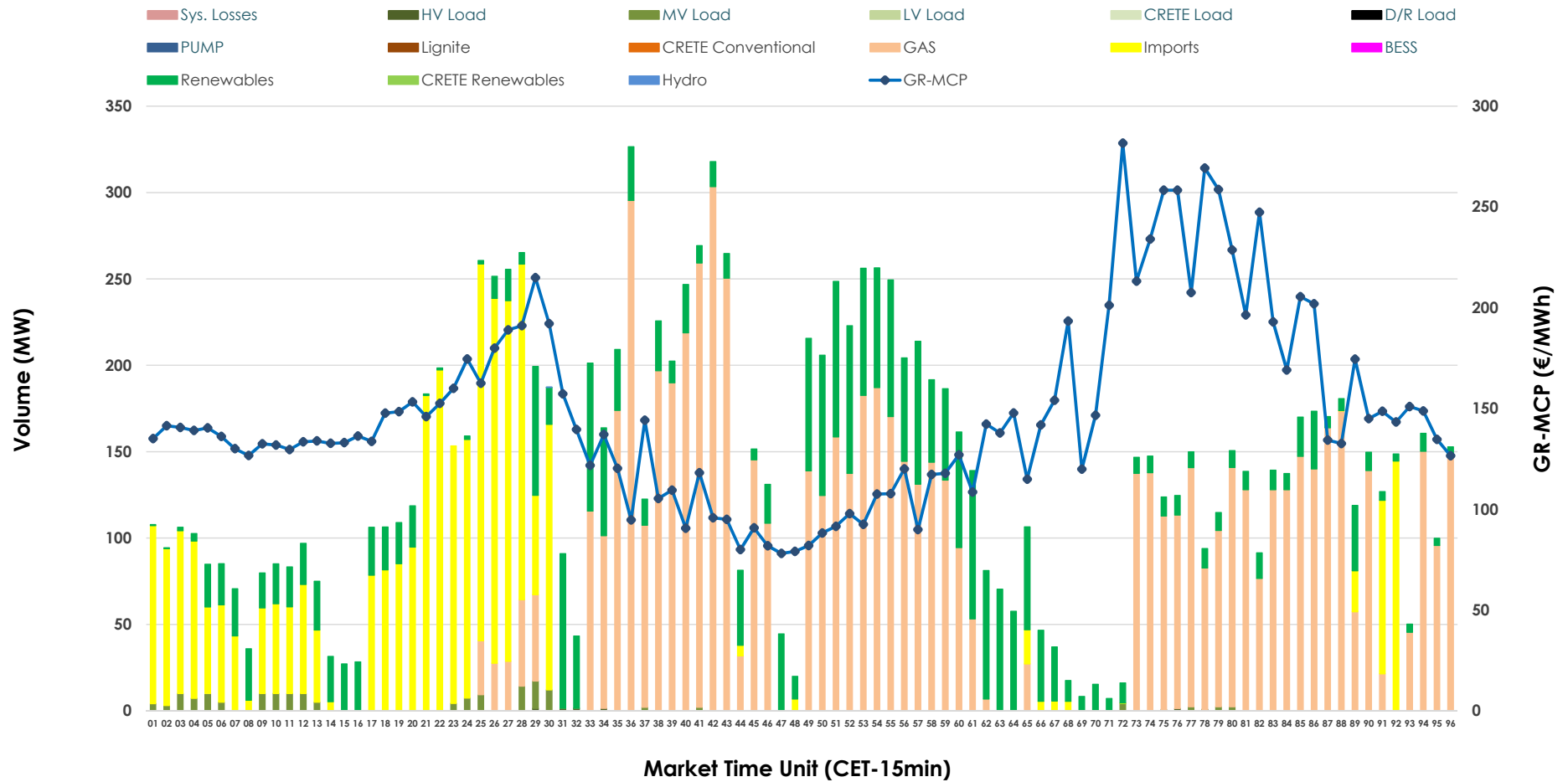


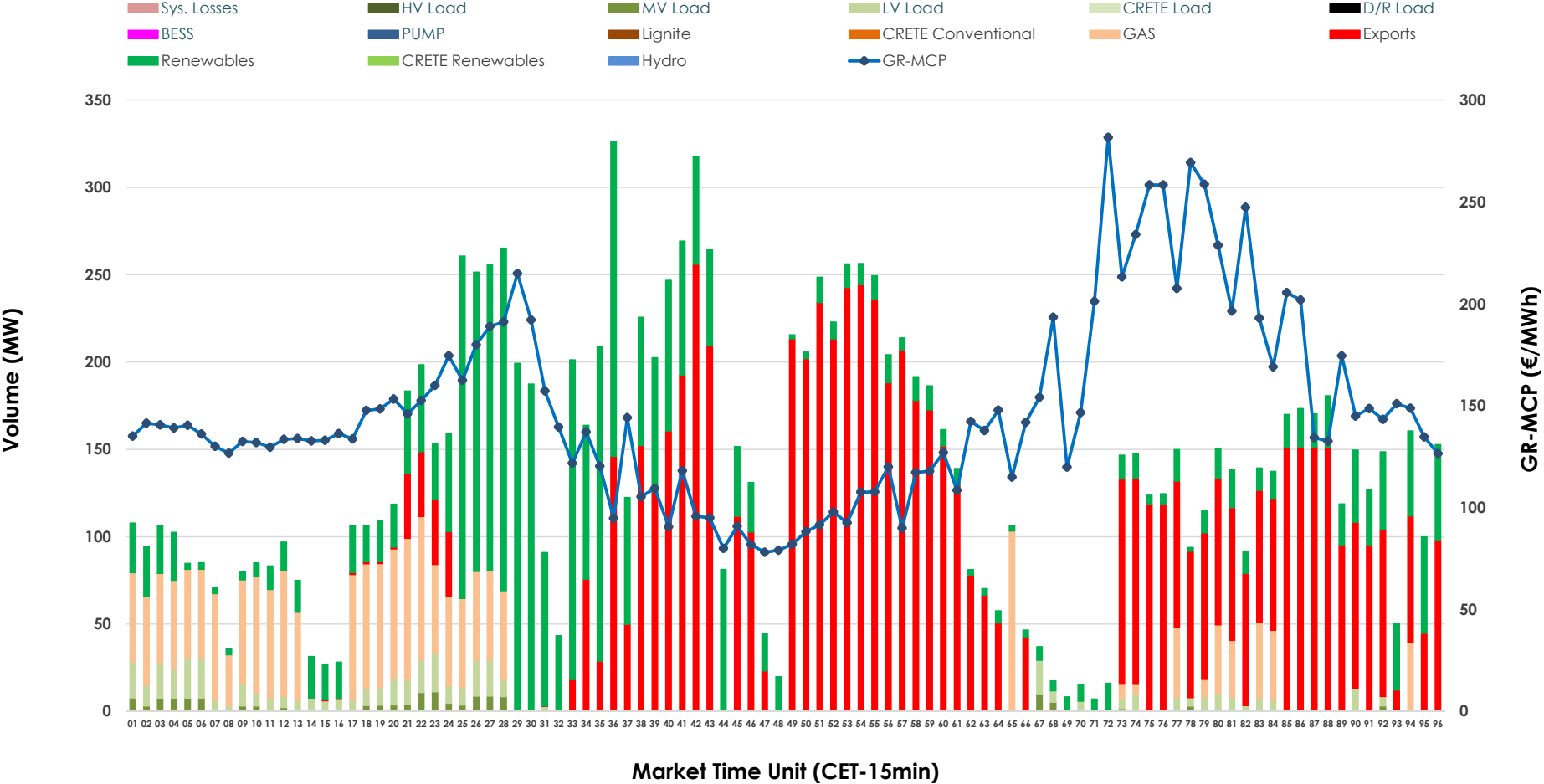


IDA '2' Market Outlook

23.03.2026 IDA '2' Market - Sell



23.03.2026 IDA '2' Market - Buy



GR Bidding Zone Weekly Figures

Delivery Day	17.03	18.03	19.03	20.03	21.03	22.03	23.03
	↗ 11%	↘ -31%	↗ 17%	↗ 18%	↘ -14%	↘ -10%	↗ 70%
Avg.MCP (€/MWh)	116.34	80.64	94.68	111.38	95.69	86.52	147.38
Max.MCP (€/MWh)	193.25	148.43	211.38	245.73	170.48	195.14	281.69
Min.MCP (€/MWh)	60.40	-10.62	5.30	33.00	-10.46	-10.00	78.10
	↘ -27%	↗ 2%	↘ -9%	↗ 22%	↗ 2%	↗ 52%	↗ 1%
Tot.Vol(GWh)	3.75	3.81	3.46	4.24	4.32	6.58	6.67

Trades by Order Type

Delivery Day		17.03	18.03	19.03	20.03	21.03	22.03	23.03	
Ord Price Type		Sell & Buy Trades in (GWh) per Price Type							(%)
PPT	(S)	0.000	0.000	0.000	0.000	0.000	0.000	0.000	0.00%
HBD	(S)	1.679	0.962	1.678	1.422	1.990	2.122	2.540	76.16%
BLK	(S)	0.000	0.000	0.000	0.000	0.000	0.000	0.000	0.00%
CPL	(S)	0.194	0.942	0.054	0.696	0.173	1.168	0.795	23.84%
PPT	(B)	0.000	0.000	0.000	0.000	0.000	0.000	0.000	0.00%
HBD	(B)	1.440	1.798	0.974	1.907	1.930	2.586	1.590	47.67%
BLK	(B)	0.000	0.000	0.000	0.000	0.000	0.000	0.000	0.00%
CPL	(B)	0.434	0.106	0.758	0.211	0.232	0.704	1.745	52.33%
		Sell & Buy Orders Traded per Price Type							(%)
PPT	(S)	0	0	0	0	0	0	0	0.00%
HBD	(S)	427	207	324	245	212	358	324	100.00%
BLK	(S)	0	0	0	0	0	0	0	0.00%
PPT	(B)	0	0	0	0	0	0	0	0.00%
HBD	(B)	584	550	435	473	670	483	392	100.00%
BLK	(B)	0	0	0	0	0	0	0	0.00%

- MCP** Market Clearing Price (€/MWh)
- PPT** Priority Price-Taking
- HBD** Hybrid
- BLK** Block
- CPL** Market Coupling Flow

Trade's Volume Mix

		Sell - MWh	Buy - MWh	
Lignite	(0.0%)	0	0	(0.0%)
Crete Conv.	(0.0%)	0	0	(0.0%)
Gas	(54.1%)	1,805	457	(13.7%)
Hydro	(0.0%)	0	0	(0.0%)
Imports	(23.8%)	795		
RES	(20.7%)	692	977	(29.3%)
Crete RES	(0.0%)	0	0	(0.0%)
BESS	(0.0%)	0	0	(0.0%)
HV Load	(0.1%)	2	0	(0.0%)
MV Load	(1.2%)	41	37	(1.1%)
LV Load	(0.0%)	0	118	(3.5%)
Crete Load	(0.0%)	0	0	(0.0%)
Pumping	(0.0%)	0	0	(0.0%)
Exports			1,745	(52.3%)
Sys.Losses	(0.0%)	0	0	(0.0%)
D/R Load	(0.0%)	0	0	(0.0%)

