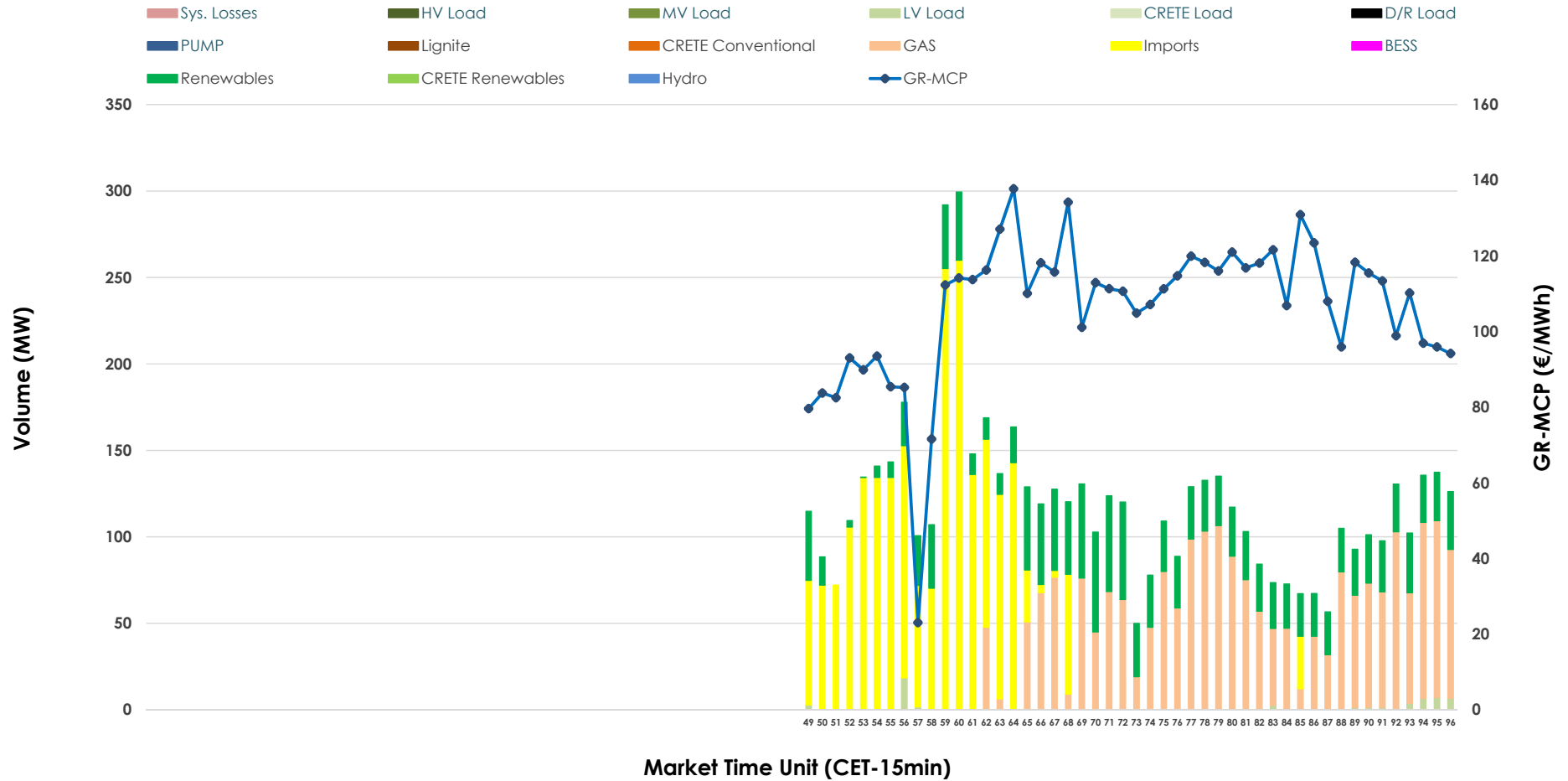


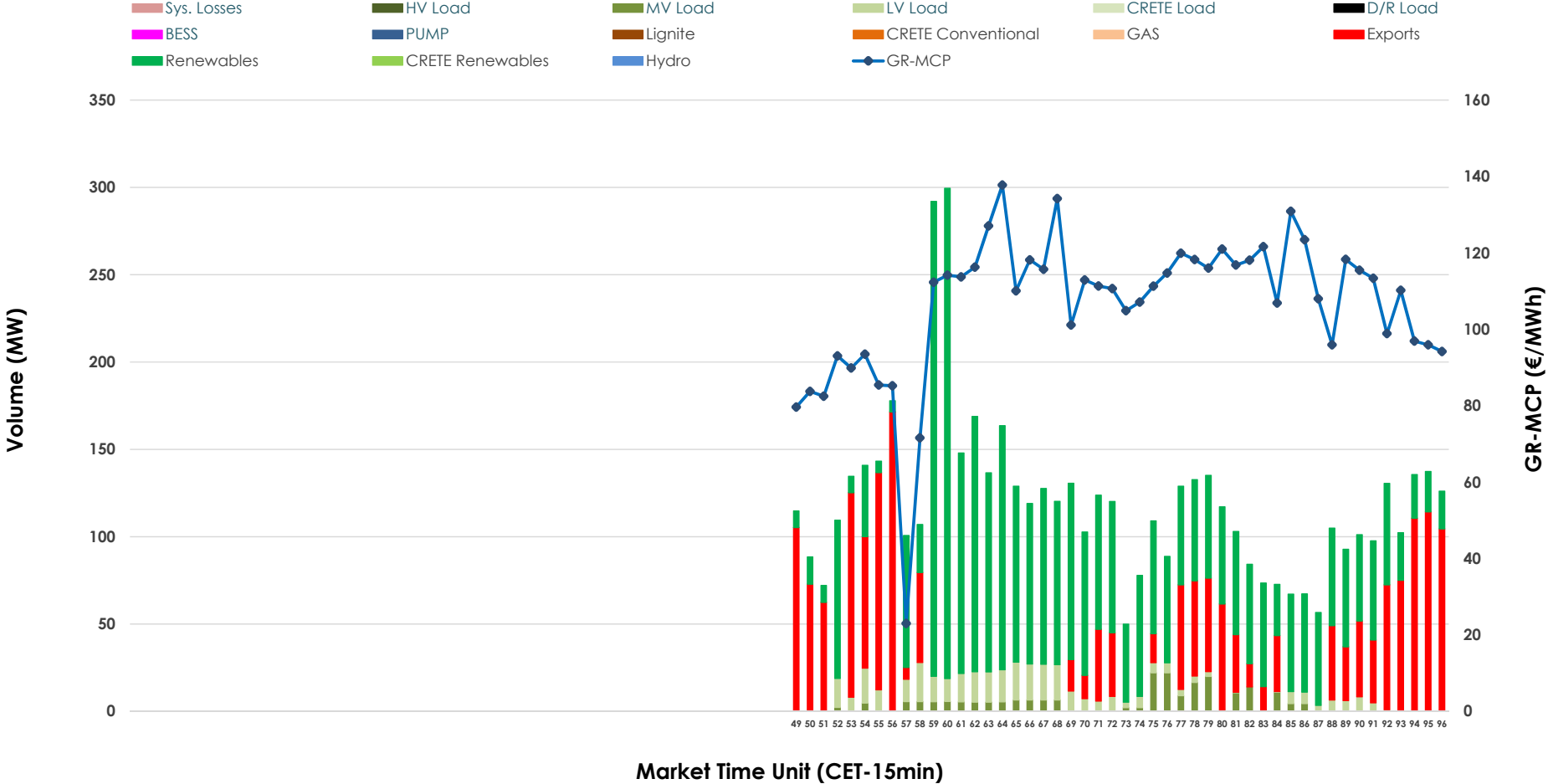


# IDA '3' Market Outlook

27.03.2026 IDA '3' Market - Sell



### 27.03.2026 IDA '3' Market - Buy



### GR Bidding Zone Weekly Figures

Delivery Day	21.03	22.03	23.03	24.03	25.03	26.03	27.03
	👉 -17%	👉 -14%	👈 79%	👉 -29%	👉 -16%	👉 -22%	👈 33%
<b>Avg.MCP (€/MWh)</b>	111.20	95.13	170.66	121.58	102.12	79.75	106.28
<b>Max.MCP (€/MWh)</b>	164.90	188.64	292.57	203.53	205.42	161.54	137.74
<b>Min.MCP (€/MWh)</b>	23.69	-9.13	88.57	15.87	-7.26	-43.75	23.02
	👈 68%	👉 -64%	👉 20%	👉 0%	👉 -36%	👈 110%	👉 24%
<b>Tot.Vol(GWh)</b>	4.02	1.43	1.71	1.71	1.10	2.31	2.88

### Trades by Order Type

Delivery Day		21.03	22.03	23.03	24.03	25.03	26.03	27.03	
<b>Ord Price Type</b>		<b>Sell &amp; Buy Trades in (GWh) per Price Type</b>							<b>(%)</b>
<b>PPT</b>	(S)	0.000	0.000	0.000	0.000	0.000	0.000	0.000	0.00%
<b>HBD</b>	(S)	1.230	0.638	0.817	0.430	0.414	0.535	0.901	62.51%
<b>BLK</b>	(S)	0.000	0.000	0.000	0.000	0.000	0.000	0.000	0.00%
<b>CPL</b>	(S)	0.778	0.078	0.039	0.426	0.138	0.622	0.540	37.49%
<b>PPT</b>	(B)	0.000	0.000	0.000	0.000	0.000	0.000	0.000	0.00%
<b>HBD</b>	(B)	1.920	0.524	0.528	0.677	0.353	0.650	0.976	67.72%
<b>BLK</b>	(B)	0.000	0.000	0.000	0.000	0.000	0.000	0.000	0.00%
<b>CPL</b>	(B)	0.088	0.192	0.328	0.178	0.199	0.508	0.465	32.28%
		<b>Sell &amp; Buy Orders Traded per Price Type</b>							<b>(%)</b>
<b>PPT</b>	(S)	0	0	0	0	0	0	0	0.00%
<b>HBD</b>	(S)	149	224	168	158	224	156	139	100.00%
<b>BLK</b>	(S)	0	0	0	0	0	0	0	0.00%
<b>PPT</b>	(B)	0	0	0	0	0	0	0	0.00%
<b>HBD</b>	(B)	402	221	216	273	143	142	281	100.00%
<b>BLK</b>	(B)	0	0	0	0	0	0	0	0.00%

- MCP** Market Clearing Price (€/MWh)
- PPT** Priority Price-Taking
- HBD** Hybrid
- BLK** Block
- CPL** Market Coupling Flow

### Trade's Volume Mix

		Sell - MWh	Buy - MWh	
<b>Lignite</b>	(0.0%)	0	0	(0.0%)
<b>Crete Conv.</b>	(0.0%)	0	0	(0.0%)
<b>Gas</b>	(37.6%)	541	0	(0.0%)
<b>Hydro</b>	(0.0%)	0	0	(0.0%)
<b>Imports</b>	(37.5%)	540		
<b>RES</b>	(24.0%)	346	826	(57.3%)
<b>Crete RES</b>	(0.0%)	0	0	(0.0%)
<b>BESS</b>	(0.0%)	0	0	(0.0%)
<b>HV Load</b>	(0.0%)	0	0	(0.0%)
<b>MV Load</b>	(0.0%)	0	54	(3.7%)
<b>LV Load</b>	(1.0%)	14	96	(6.7%)
<b>Crete Load</b>	(0.0%)	0	0	(0.0%)
<b>Pumping</b>	(0.0%)	0	0	(0.0%)
<b>Exports</b>			465	(32.3%)
<b>Sys.Losses</b>	(0.0%)	0	0	(0.0%)
<b>D/R Load</b>	(0.0%)	0	0	(0.0%)

