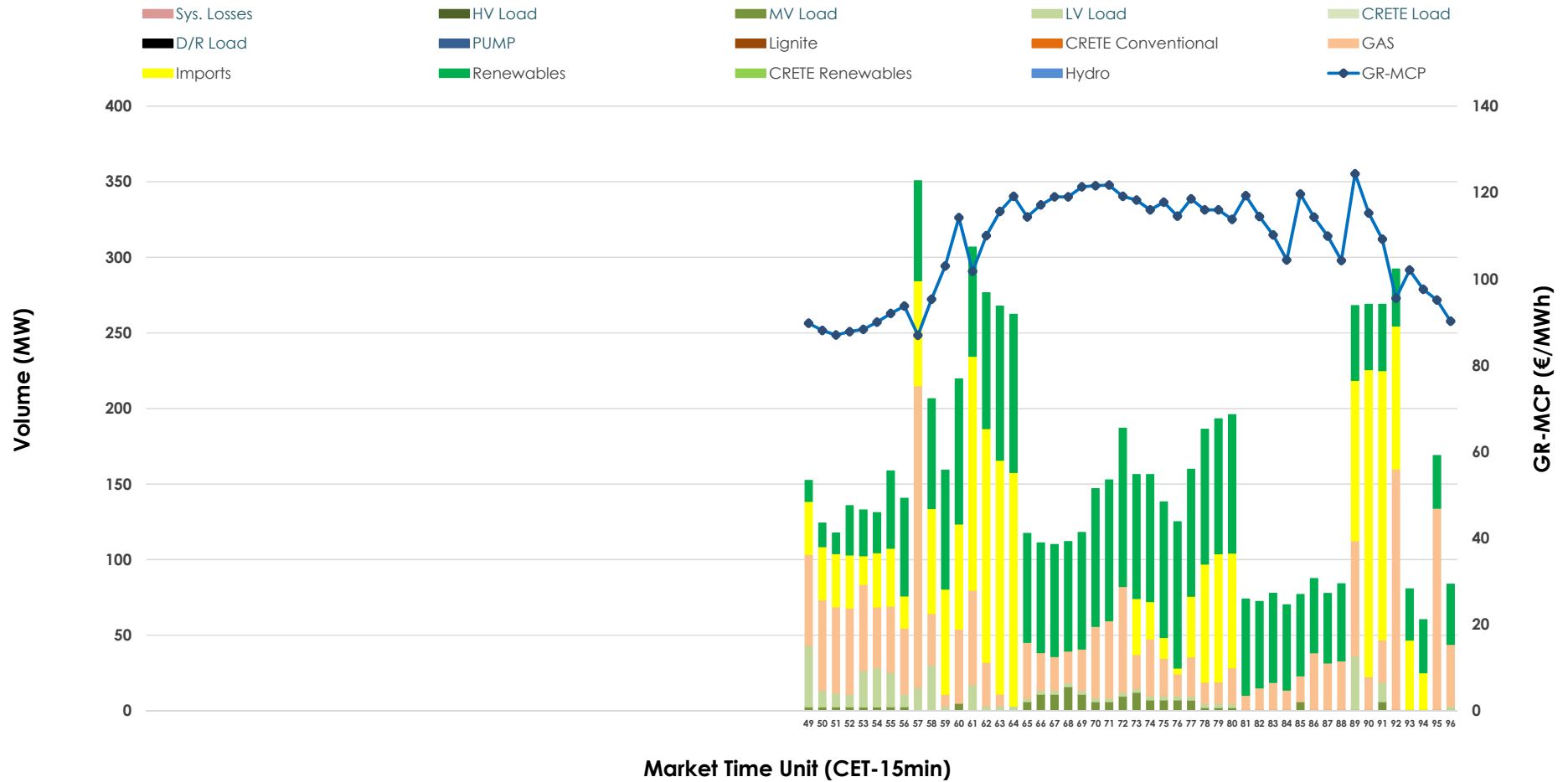


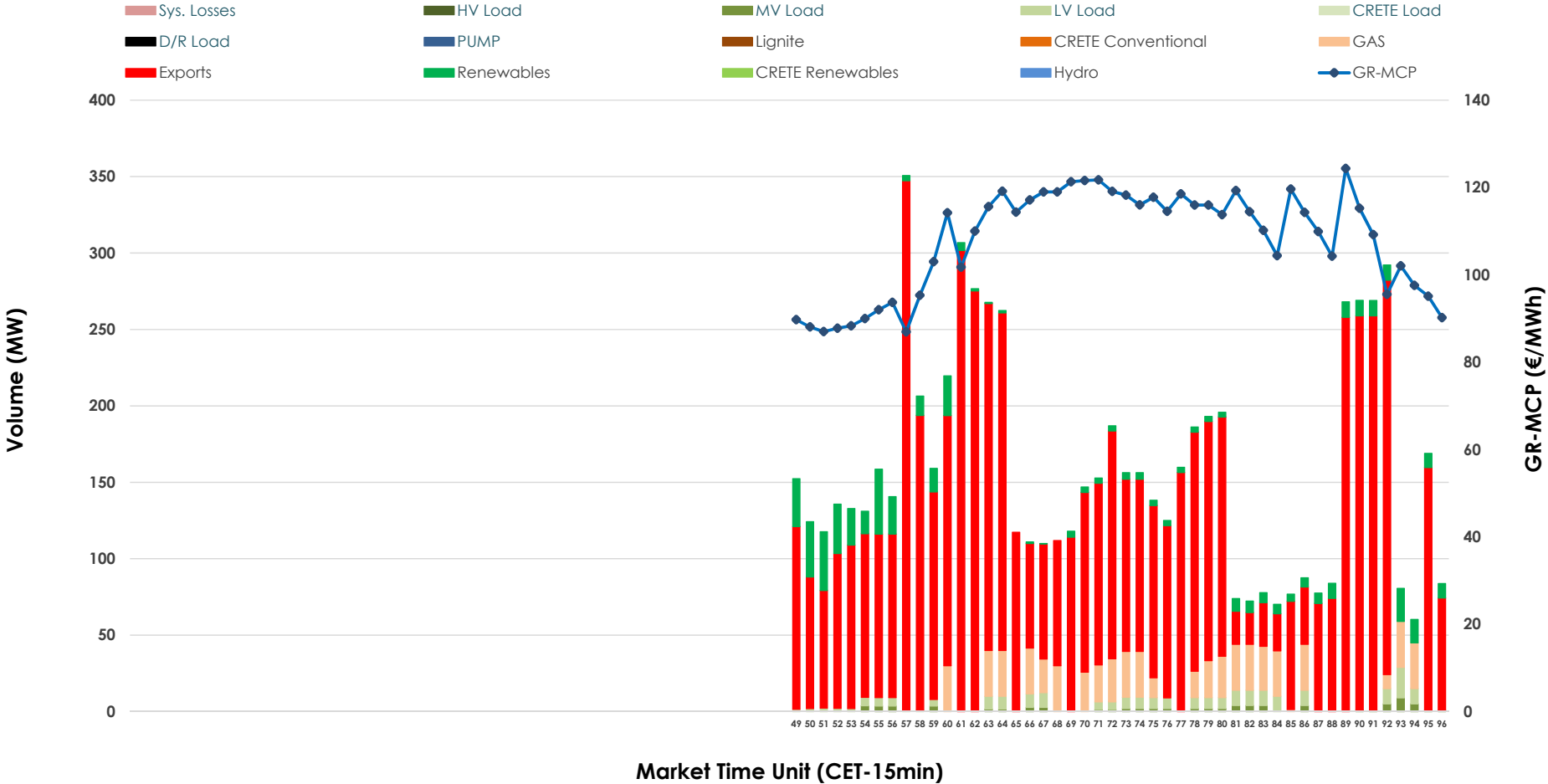


IDA '3' Market Outlook

26.12.2025 IDA '3' Market - Sell



26.12.2025 IDA '3' Market - Buy



GR Bidding Zone Weekly Figures

Delivery Day	20.12	21.12	22.12	23.12	24.12	25.12	26.12
	↓ -12%	↔ 3%	↗ 13%	→ 0%	↓ -31%	↗ 8%	↗ 4%
Avg.MCP (€/MWh)	120.03	123.29	139.19	139.29	95.98	103.44	107.76
Max.MCP (€/MWh)	146.12	168.82	208.31	224.24	162.40	120.06	124.35
Min.MCP (€/MWh)	91.29	83.86	76.26	57.54	51.36	84.94	86.95
	↑ 48%	↓ -13%	↓ -56%	↓ -18%	↑ 127%	↗ 18%	↑ 44%
Tot.Vol(GWh)	3.16	2.75	1.20	0.98	2.24	2.64	3.81

Trades by Order Type

Delivery Day		20.12	21.12	22.12	23.12	24.12	25.12	26.12	
Ord Price Type		Sell & Buy Trades in (GWh) per Price Type							(%)
PPT	(S)	0.000	0.000	0.000	0.000	0.000	0.000	0.000	0.00%
HBD	(S)	0.168	0.601	0.386	0.426	1.058	1.121	1.364	71.62%
BLK	(S)	0.000	0.000	0.000	0.000	0.000	0.000	0.000	0.00%
CPL	(S)	1.411	0.772	0.212	0.066	0.061	0.201	0.541	28.38%
PPT	(B)	0.000	0.000	0.000	0.000	0.000	0.000	0.000	0.00%
HBD	(B)	0.920	0.704	0.567	0.300	0.294	0.421	0.353	18.53%
BLK	(B)	0.000	0.000	0.000	0.000	0.000	0.000	0.000	0.00%
CPL	(B)	0.659	0.669	0.032	0.192	0.825	0.902	1.552	81.47%
		Sell & Buy Orders Traded per Price Type							(%)
PPT	(S)	0	0	0	0	0	0	0	0.00%
HBD	(S)	161	89	103	54	215	211	246	100.00%
BLK	(S)	0	0	0	0	0	0	0	0.00%
PPT	(B)	0	0	0	0	0	0	0	0.00%
HBD	(B)	179	207	220	240	120	132	84	100.00%
BLK	(B)	0	0	0	0	0	0	0	0.00%

- MCP** Market Clearing Price (€/MWh)
- PPT** Priority Price-Taking
- HBD** Hybrid
- BLK** Block
- CPL** Market Coupling Flow

Trade's Volume Mix

		Sell - MWh	Buy - MWh	
Lignite	(0.0%)	0	0	(0.0%)
Crete Conv.	(0.0%)	0	0	(0.0%)
Gas	(25.2%)	480	153	(8.0%)
Hydro	(0.0%)	0	0	(0.0%)
Imports	(28.4%)	541		
RES	(40.0%)	761	126	(6.6%)
Crete RES	(0.0%)	0	0	(0.0%)
HV Load	(0.0%)	0	0	(0.0%)
MV Load	(2.4%)	45	20	(1.0%)
LV Load	(4.1%)	78	55	(2.9%)
Crete Load	(0.0%)	0	0	(0.0%)
Pumping	(0.0%)	0	0	(0.0%)
Exports			1,552	(81.5%)
Sys.Losses	(0.0%)	0	0	(0.0%)
D/R Load	(0.0%)	0	0	(0.0%)

