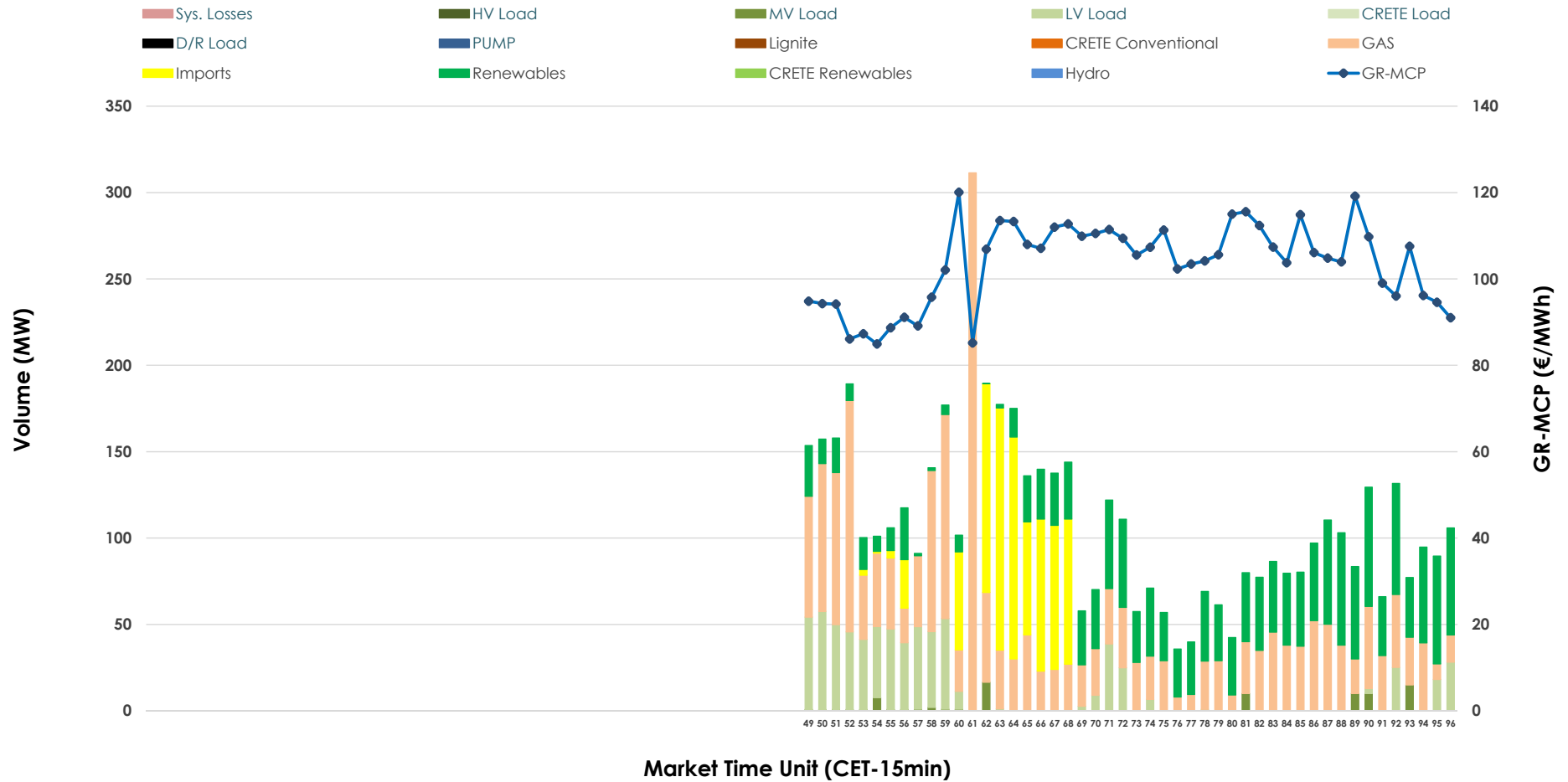


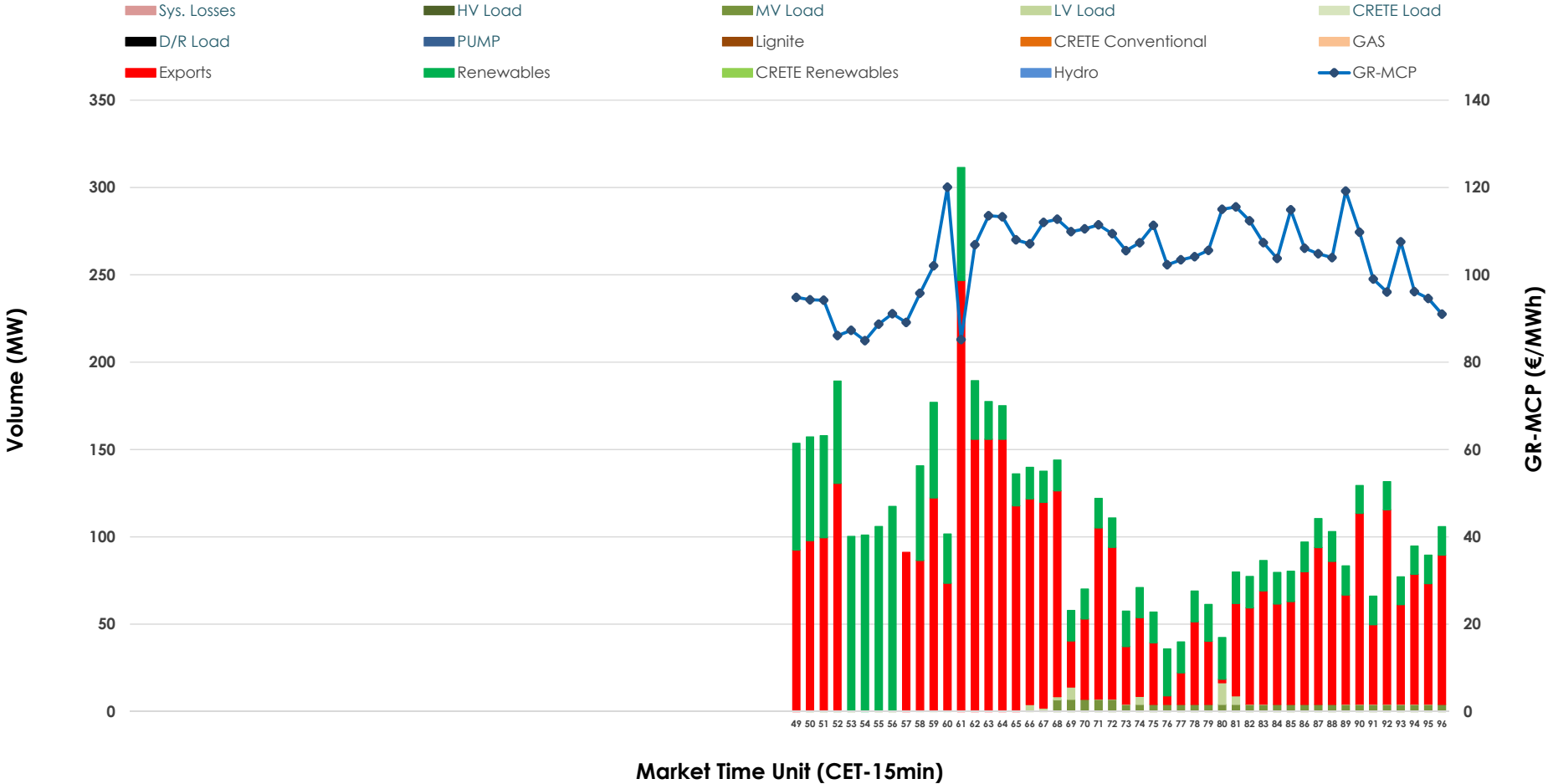


# IDA '3' Market Outlook

25.12.2025 IDA '3' Market - Sell



### 25.12.2025 IDA '3' Market - Buy



### GR Bidding Zone Weekly Figures

Delivery Day	19.12	20.12	21.12	22.12	23.12	24.12	25.12
	↓ -35%	↘ -12%	↗ 3%	↗ 13%	→ 0%	↘ -31%	↗ 8%
<b>Avg.MCP (€/MWh)</b>	136.53	120.03	123.29	139.19	139.29	95.98	103.44
<b>Max.MCP (€/MWh)</b>	291.46	146.12	168.82	208.31	224.24	162.40	120.06
<b>Min.MCP (€/MWh)</b>	46.02	91.29	83.86	76.26	57.54	51.36	84.94
	↗ 14%	↑ 48%	↘ -13%	↓ -56%	↘ -18%	↑ 127%	↗ 18%
<b>Tot.Vol(GWh)</b>	2.14	3.16	2.75	1.20	0.98	2.24	2.64

### Trades by Order Type

Delivery Day		19.12	20.12	21.12	22.12	23.12	24.12	25.12	
<b>Ord Price Type</b>		<b>Sell &amp; Buy Trades in (GWh) per Price Type</b>							<b>(%)</b>
<b>PPT</b>	(S)	0.000	0.000	0.000	0.000	0.000	0.000	0.000	0.00%
<b>HBD</b>	(S)	0.692	0.168	0.601	0.386	0.426	1.058	1.121	84.80%
<b>BLK</b>	(S)	0.000	0.000	0.000	0.000	0.000	0.000	0.000	0.00%
<b>CPL</b>	(S)	0.379	1.411	0.772	0.212	0.066	0.061	0.201	15.20%
<b>PPT</b>	(B)	0.000	0.000	0.000	0.000	0.000	0.000	0.000	0.00%
<b>HBD</b>	(B)	1.048	0.920	0.704	0.567	0.300	0.294	0.421	31.81%
<b>BLK</b>	(B)	0.000	0.000	0.000	0.000	0.000	0.000	0.000	0.00%
<b>CPL</b>	(B)	0.023	0.659	0.669	0.032	0.192	0.825	0.902	68.19%
		<b>Sell &amp; Buy Orders Traded per Price Type</b>							<b>(%)</b>
<b>PPT</b>	(S)	0	0	0	0	0	0	0	0.00%
<b>HBD</b>	(S)	260	161	89	103	54	215	211	100.00%
<b>BLK</b>	(S)	0	0	0	0	0	0	0	0.00%
<b>PPT</b>	(B)	0	0	0	0	0	0	0	0.00%
<b>HBD</b>	(B)	148	179	207	220	240	120	132	100.00%
<b>BLK</b>	(B)	0	0	0	0	0	0	0	0.00%

**MCP** Market Clearing Price (€/MWh)  
**PPT** Priority Price-Taking  
**HBD** Hybrid  
**BLK** Block  
**CPL** Market Coupling Flow

### Trade's Volume Mix

	Sell - MWh	Buy - MWh	
<b>Lignite</b> (0.0%)	0	0	(0.0%)
<b>Crete Conv.</b> (0.0%)	0	0	(0.0%)
<b>Gas</b> (41.3%)	546	0	(0.0%)
<b>Hydro</b> (0.0%)	0	0	(0.0%)
<b>Imports</b> (15.2%)	201		
<b>RES</b> (29.1%)	385	377	(28.5%)
<b>Crete RES</b> (0.0%)	0	0	(0.0%)
<b>HV Load</b> (0.0%)	0	0	(0.0%)
<b>MV Load</b> (1.5%)	20	33	(2.5%)
<b>LV Load</b> (12.9%)	171	11	(0.8%)
<b>Crete Load</b> (0.0%)	0	0	(0.0%)
<b>Pumping</b> (0.0%)	0	0	(0.0%)
<b>Exports</b>		902	(68.2%)
<b>Sys.Losses</b> (0.0%)	0	0	(0.0%)
<b>D/R Load</b> (0.0%)	0	0	(0.0%)

