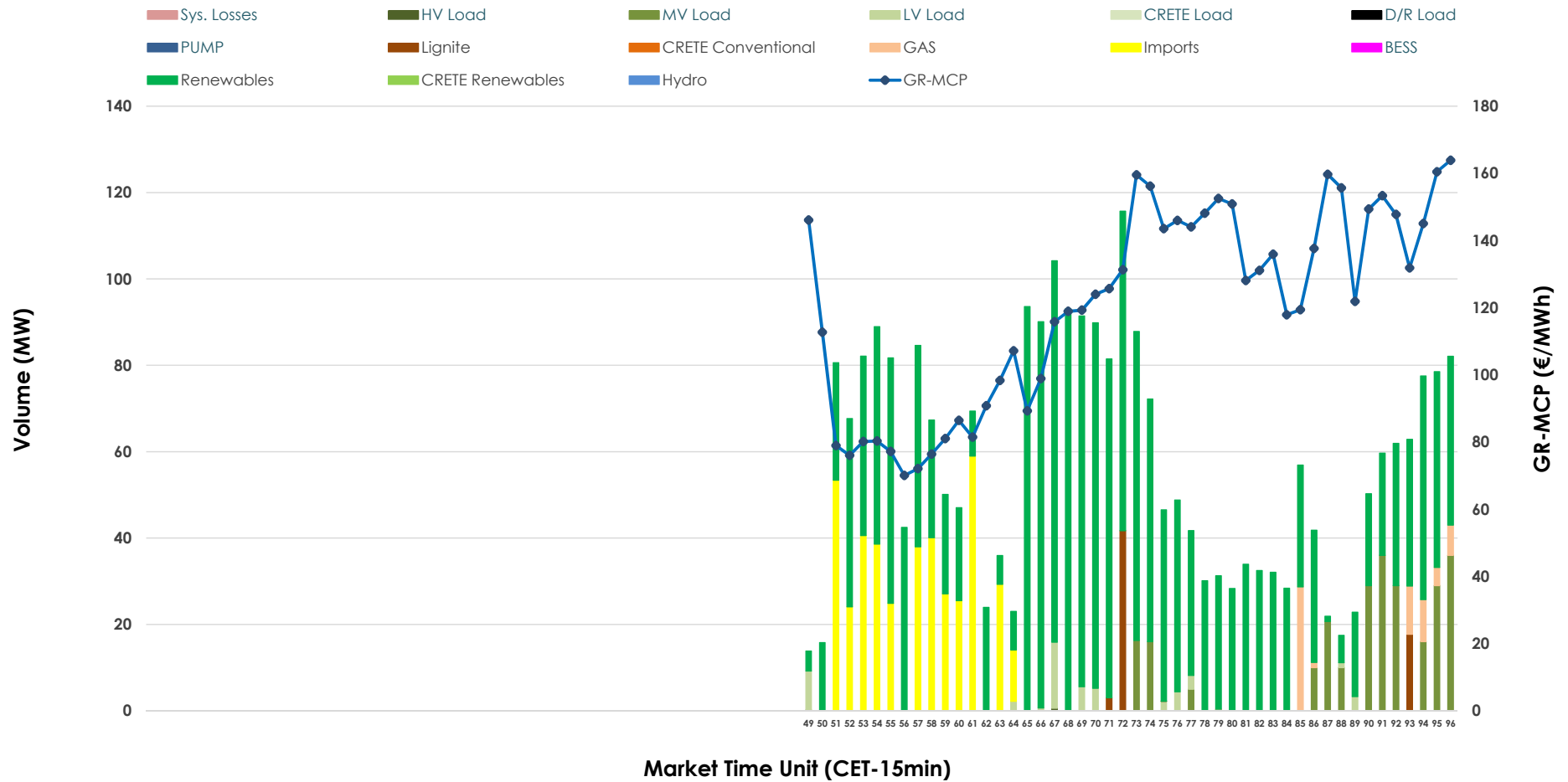


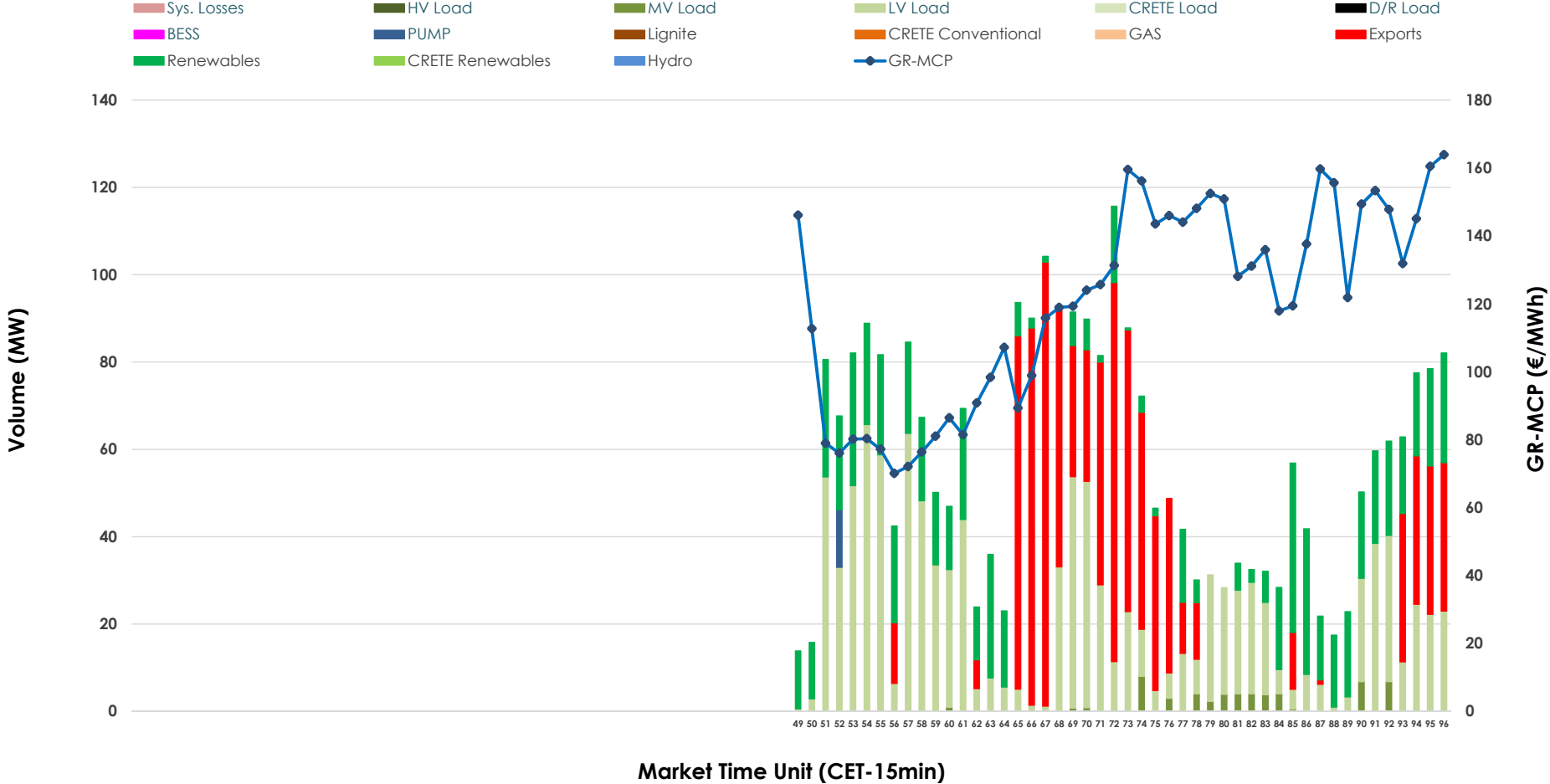


# IDA '3' Market Outlook

08.05.2026 IDA '3' Market - Sell



### 08.05.2026 IDA '3' Market - Buy



### GR Bidding Zone Weekly Figures

Delivery Day	02.05	03.05	04.05	05.05	06.05	07.05	08.05
	↗ 22%	↘ -1%	↕ 80%	↘ -5%	↘ -12%	↗ 22%	↘ -3%
<b>Avg.MCP (€/MWh)</b>	68.99	68.12	122.88	116.60	102.41	124.57	120.81
<b>Max.MCP (€/MWh)</b>	172.68	167.98	306.49	295.47	203.55	174.56	163.91
<b>Min.MCP (€/MWh)</b>	-56.03	-16.76	-16.16	-5.71	-8.92	100.57	70.07
	↕ 62%	↗ 0%	↘ -8%	↘ -54%	↕ 56%	↕ 54%	↘ -43%
<b>Tot.Vol(GWh)</b>	2.41	2.40	2.21	1.01	1.58	2.43	1.39

### Trades by Order Type

Delivery Day		02.05	03.05	04.05	05.05	06.05	07.05	08.05	
<b>Ord Price Type</b>		<b>Sell &amp; Buy Trades in (GWh) per Price Type</b>							<b>(%)</b>
<b>PPT</b>	(S)	0.000	0.000	0.000	0.000	0.000	0.000	0.000	0.00%
<b>HBD</b>	(S)	0.889	1.114	0.625	0.401	0.529	0.750	0.592	85.17%
<b>BLK</b>	(S)	0.000	0.000	0.000	0.000	0.000	0.000	0.000	0.00%
<b>CPL</b>	(S)	0.313	0.086	0.483	0.106	0.261	0.465	0.103	14.83%
<b>PPT</b>	(B)	0.000	0.000	0.000	0.000	0.000	0.000	0.000	0.00%
<b>HBD</b>	(B)	0.941	0.667	1.107	0.460	0.761	0.929	0.466	67.09%
<b>BLK</b>	(B)	0.000	0.000	0.000	0.000	0.000	0.000	0.000	0.00%
<b>CPL</b>	(B)	0.261	0.534	0.000	0.047	0.029	0.286	0.229	32.91%
		<b>Sell &amp; Buy Orders Traded per Price Type</b>							<b>(%)</b>
<b>PPT</b>	(S)	0	0	0	0	0	0	0	0.00%
<b>HBD</b>	(S)	166	149	192	115	100	163	164	100.00%
<b>BLK</b>	(S)	0	0	0	0	0	0	0	0.00%
<b>PPT</b>	(B)	0	0	0	0	0	0	0	0.00%
<b>HBD</b>	(B)	157	94	179	211	154	223	198	100.00%
<b>BLK</b>	(B)	0	0	0	0	0	0	0	0.00%

- MCP** Market Clearing Price (€/MWh)
- PPT** Priority Price-Taking
- HBD** Hybrid
- BLK** Block
- CPL** Market Coupling Flow

### Trade's Volume Mix

	Sell - MWh	Buy - MWh	
<b>Lignite</b> (2.3%)	16	0	(0.0%)
<b>Crete Conv.</b> (0.0%)	0	0	(0.0%)
<b>Gas</b> (2.2%)	16	0	(0.0%)
<b>Hydro</b> (0.0%)	0	0	(0.0%)
<b>Imports</b> (14.8%)	103		
<b>RES</b> (69.7%)	484	176	(25.4%)
<b>Crete RES</b> (0.0%)	0	0	(0.0%)
<b>BESS</b> (0.0%)	0	0	(0.0%)
<b>HV Load</b> (0.0%)	0	0	(0.0%)
<b>MV Load</b> (9.1%)	63	13	(1.9%)
<b>LV Load</b> (1.9%)	13	273	(39.3%)
<b>Crete Load</b> (0.0%)	0	0	(0.0%)
<b>Pumping</b> (0.0%)	0	3	(0.5%)
<b>Exports</b>		229	(32.9%)
<b>Sys.Losses</b> (0.0%)	0	0	(0.0%)
<b>D/R Load</b> (0.0%)	0	0	(0.0%)

