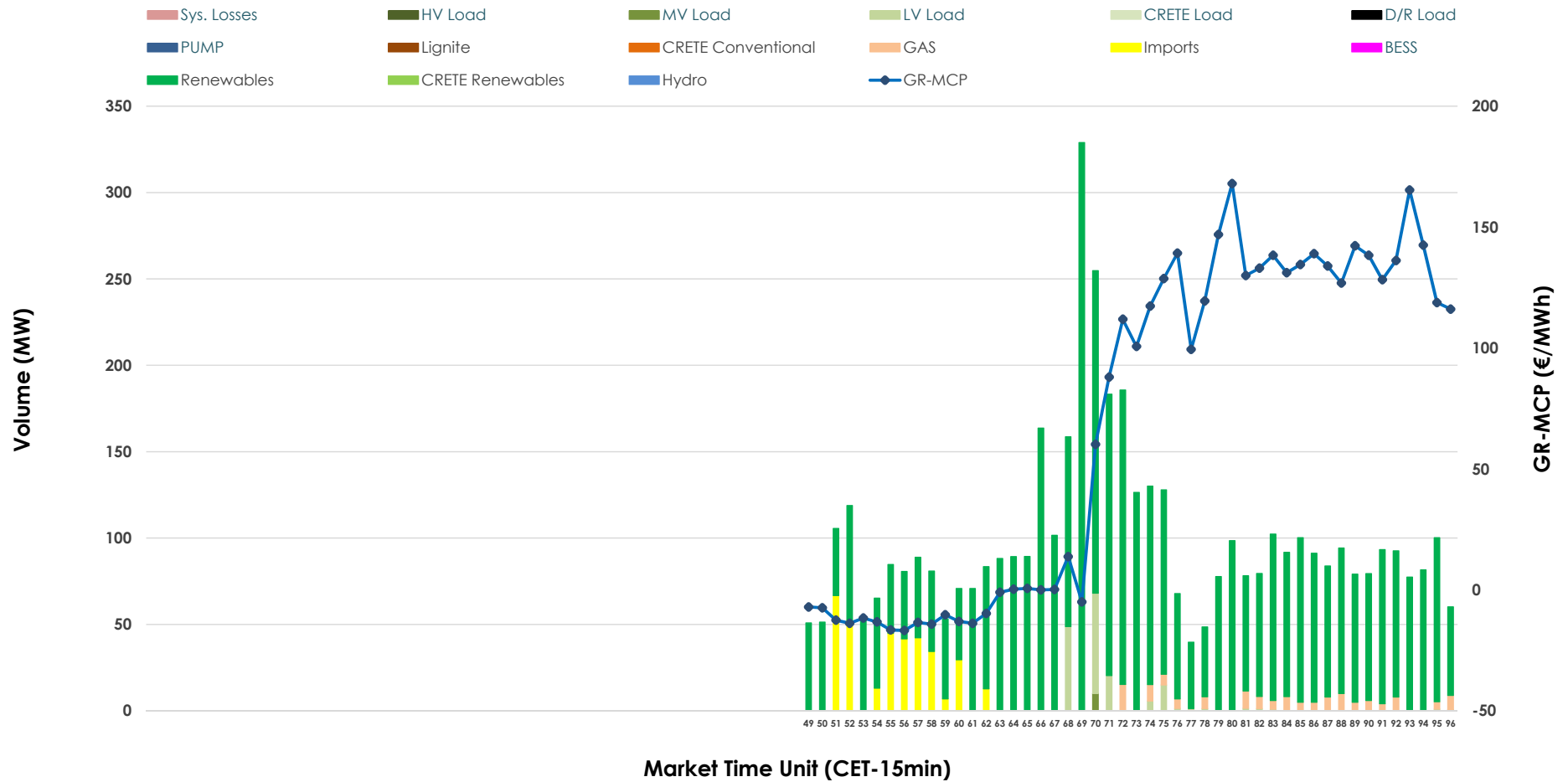


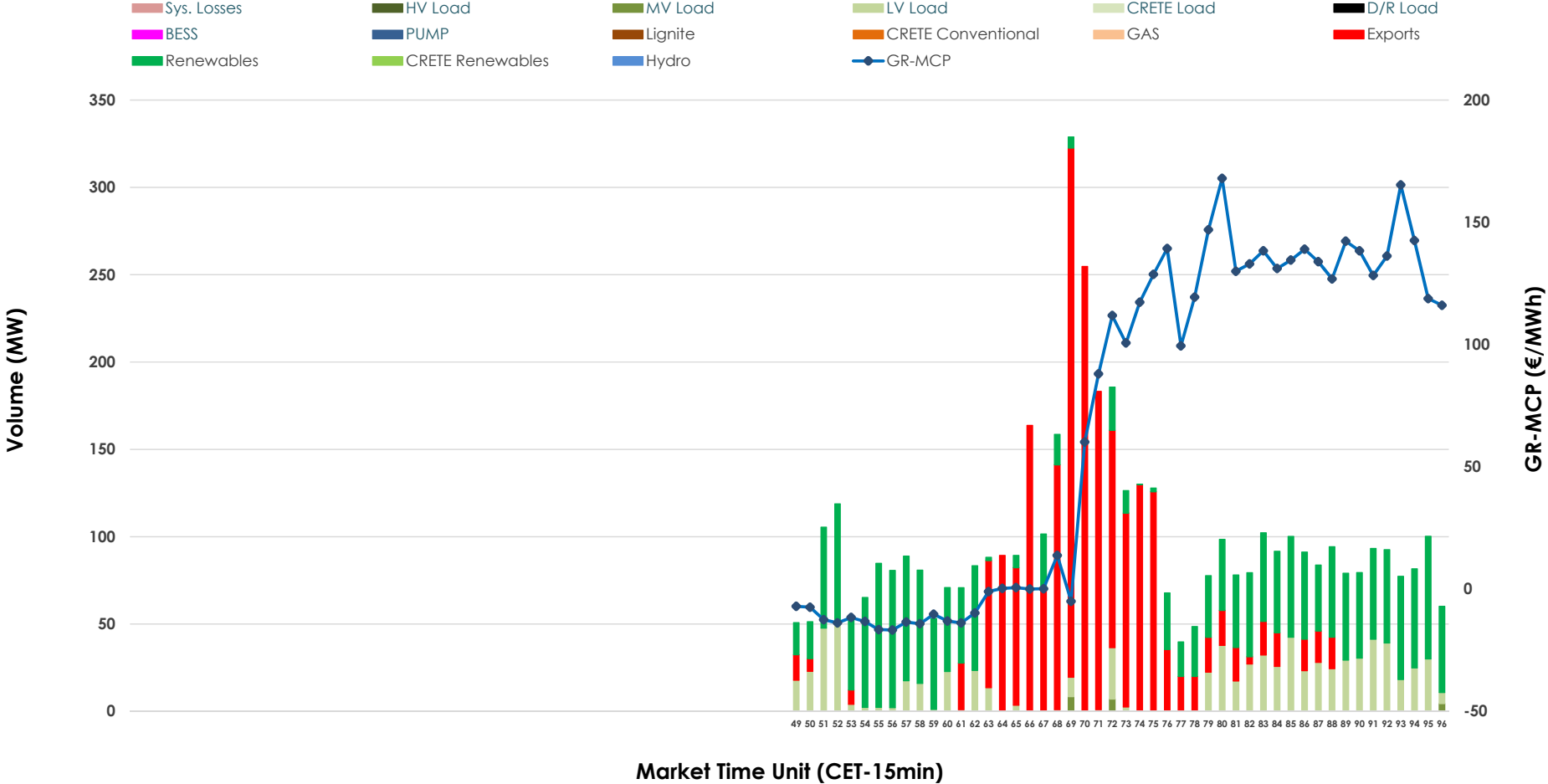


IDA '3' Market Outlook

03.05.2026 IDA '3' Market - Sell



03.05.2026 IDA '3' Market - Buy



GR Bidding Zone Weekly Figures

Delivery Day	27.04	28.04	29.04	30.04	01.05	02.05	03.05
	↗ 15%	↗ 4%	↗ 50%	↘ -26%	↘ -28%	↗ 22%	↘ -1%
Avg.MCP (€/MWh)	67.48	70.09	105.43	78.43	56.53	68.99	68.12
Max.MCP (€/MWh)	184.30	157.70	233.89	193.40	184.92	172.68	167.98
Min.MCP (€/MWh)	-15.66	-19.62	-4.58	0.39	-12.84	-56.03	-16.76
	↗ 53%	↘ -13%	↗ 92%	↘ -44%	↘ -13%	↗ 62%	↗ 0%
Tot.Vol(GWh)	1.81	1.58	3.03	1.70	1.49	2.41	2.40

Trades by Order Type

Delivery Day		27.04	28.04	29.04	30.04	01.05	02.05	03.05	
Ord Price Type		Sell & Buy Trades in (GWh) per Price Type							(%)
PPT	(S)	0.000	0.000	0.000	0.000	0.000	0.000	0.000	0.00%
HBD	(S)	0.748	0.490	0.910	0.841	0.744	0.889	1.114	92.82%
BLK	(S)	0.000	0.000	0.000	0.000	0.000	0.000	0.000	0.00%
CPL	(S)	0.157	0.298	0.607	0.011	0.000	0.313	0.086	7.18%
PPT	(B)	0.000	0.000	0.000	0.000	0.000	0.000	0.000	0.00%
HBD	(B)	0.608	0.633	1.492	0.434	0.256	0.941	0.667	55.55%
BLK	(B)	0.000	0.000	0.000	0.000	0.000	0.000	0.000	0.00%
CPL	(B)	0.296	0.155	0.025	0.418	0.488	0.261	0.534	44.45%
		Sell & Buy Orders Traded per Price Type							(%)
PPT	(S)	0	0	0	0	0	0	0	0.00%
HBD	(S)	192	105	230	233	183	166	149	100.00%
BLK	(S)	0	0	0	0	0	0	0	0.00%
PPT	(B)	0	0	0	0	0	0	0	0.00%
HBD	(B)	175	247	178	124	88	157	94	100.00%
BLK	(B)	0	0	0	0	0	0	0	0.00%

- MCP** Market Clearing Price (€/MWh)
- PPT** Priority Price-Taking
- HBD** Hybrid
- BLK** Block
- CPL** Market Coupling Flow

Trade's Volume Mix

	Sell - MWh	Buy - MWh	
Lignite (0.0%)	0	0	(0.0%)
Crete Conv. (0.0%)	0	0	(0.0%)
Gas (2.9%)	34	0	(0.0%)
Hydro (0.0%)	0	0	(0.0%)
Imports (7.2%)	86		
RES (86.5%)	1,038	463	(38.6%)
Crete RES (0.0%)	0	0	(0.0%)
BESS (0.0%)	0	0	(0.0%)
HV Load (0.0%)	0	0	(0.0%)
MV Load (0.2%)	3	5	(0.4%)
LV Load (3.3%)	40	199	(16.6%)
Crete Load (0.0%)	0	0	(0.0%)
Pumping (0.0%)	0	0	(0.0%)
Exports		534	(44.4%)
Sys.Losses (0.0%)	0	0	(0.0%)
D/R Load (0.0%)	0	0	(0.0%)

