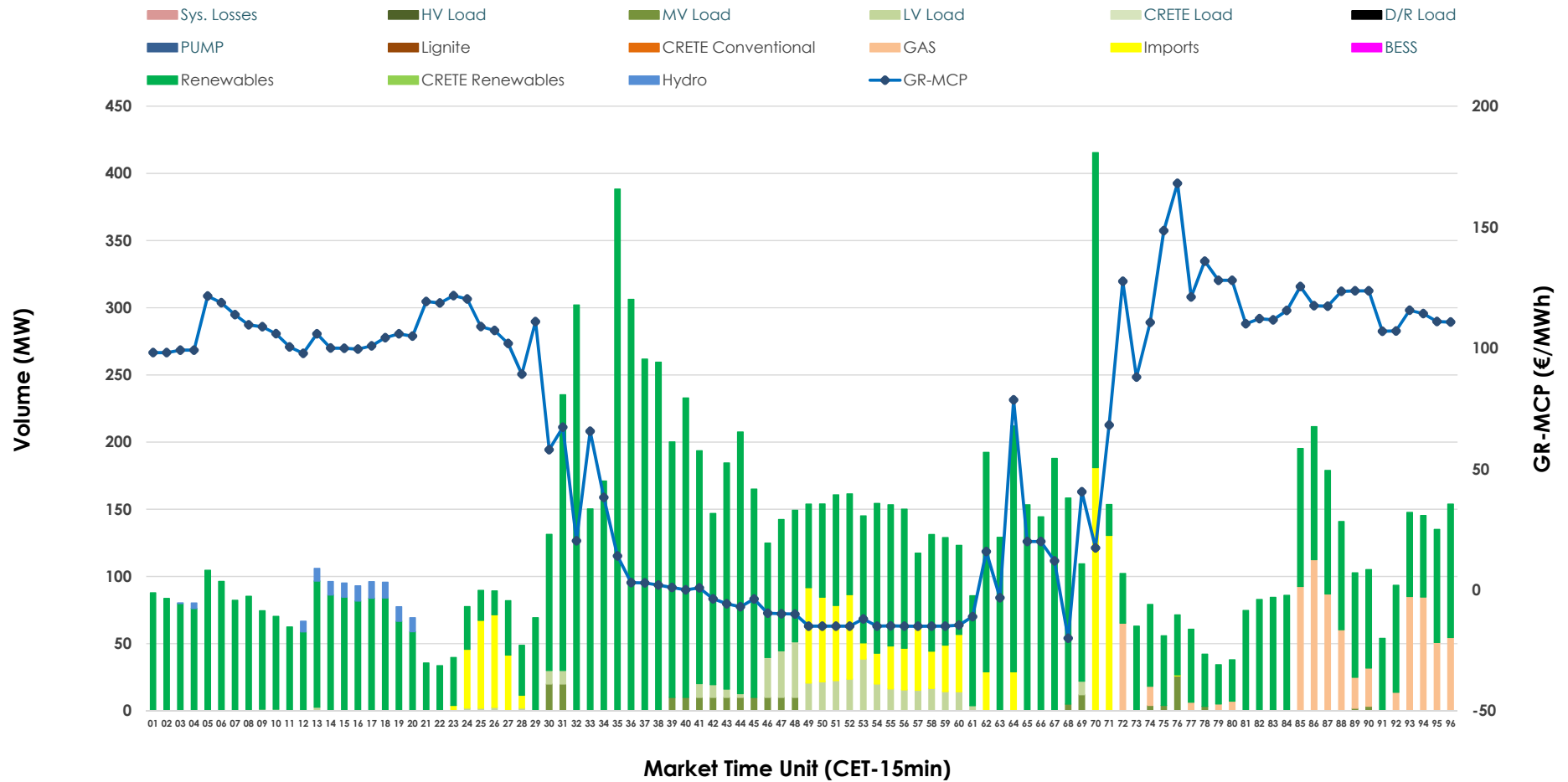


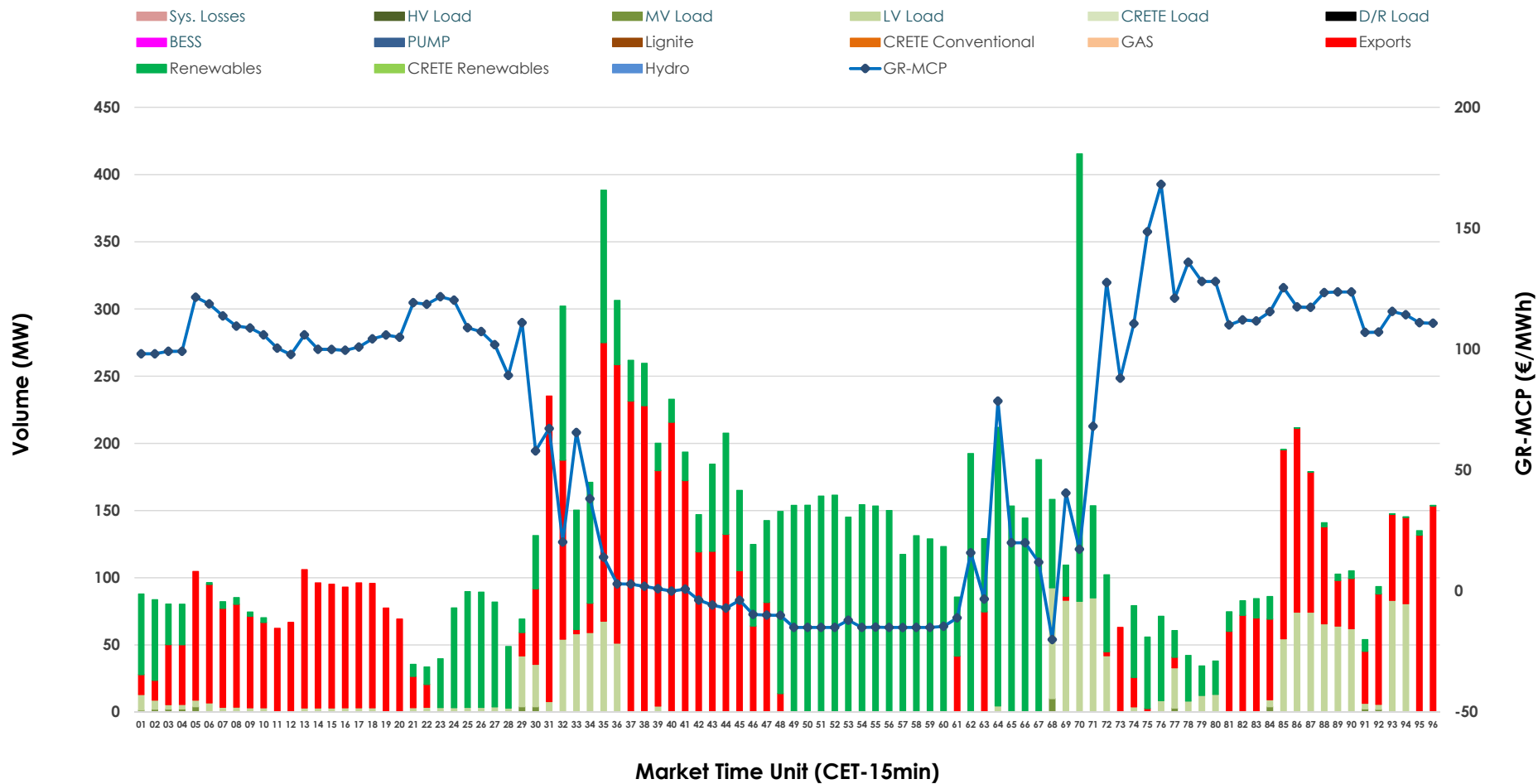


# IDA '2' Market Outlook

02.05.2026 IDA '2' Market - Sell



### 02.05.2026 IDA '2' Market - Buy



### GR Bidding Zone Weekly Figures

Delivery Day	26.04	27.04	28.04	29.04	30.04	01.05	02.05
	👇 -2%	👆 53%	👇 -12%	👆 45%	👇 -14%	👇 -32%	👆 13%
<b>Avg.MCP (€/MWh)</b>	51.81	79.14	69.62	101.24	86.96	58.74	66.43
<b>Max.MCP (€/MWh)</b>	134.70	229.04	155.85	220.05	209.77	118.93	168.12
<b>Min.MCP (€/MWh)</b>	-55.00	-0.83	-25.33	-5.16	-5.23	-12.00	-20.00
	👆 10%	👆 33%	👇 -17%	👆 2%	👆 29%	👇 -18%	👆 46%
<b>Tot.Vol(GWh)</b>	3.56	4.73	3.91	4.01	5.18	4.27	6.22

### Trades by Order Type

Delivery Day		26.04	27.04	28.04	29.04	30.04	01.05	02.05	
<b>Ord Price Type</b>		<b>Sell &amp; Buy Trades in (GWh) per Price Type</b>							<b>(%)</b>
<b>PPT</b>	(S)	0.000	0.000	0.000	0.000	0.000	0.000	0.000	0.00%
<b>HBD</b>	(S)	1.228	1.628	0.892	1.623	2.016	1.781	2.831	91.09%
<b>BLK</b>	(S)	0.000	0.000	0.000	0.000	0.000	0.000	0.000	0.00%
<b>CPL</b>	(S)	0.550	0.736	1.064	0.381	0.572	0.352	0.277	8.91%
<b>PPT</b>	(B)	0.000	0.000	0.000	0.000	0.000	0.000	0.000	0.00%
<b>HBD</b>	(B)	1.507	2.024	1.839	1.229	2.052	1.235	1.727	55.56%
<b>BLK</b>	(B)	0.000	0.000	0.000	0.000	0.000	0.000	0.000	0.00%
<b>CPL</b>	(B)	0.272	0.340	0.118	0.775	0.536	0.898	1.381	44.44%
		<b>Sell &amp; Buy Orders Traded per Price Type</b>							<b>(%)</b>
<b>PPT</b>	(S)	0	0	0	0	0	0	0	0.00%
<b>HBD</b>	(S)	226	390	206	420	428	525	429	100.00%
<b>BLK</b>	(S)	0	0	0	0	0	0	0	0.00%
<b>PPT</b>	(B)	0	0	0	0	0	0	0	0.00%
<b>HBD</b>	(B)	520	740	512	512	448	344	395	100.00%
<b>BLK</b>	(B)	0	0	0	0	0	0	0	0.00%

- MCP** Market Clearing Price (€/MWh)
- PPT** Priority Price-Taking
- HBD** Hybrid
- BLK** Block
- CPL** Market Coupling Flow

### Trade's Volume Mix

	Sell - MWh	Buy - MWh	
<b>Lignite</b> (0.0%)	0	0	(0.0%)
<b>Crete Conv.</b> (0.0%)	0	0	(0.0%)
<b>Gas</b> (6.4%)	198	0	(0.0%)
<b>Hydro</b> (0.8%)	25	0	(0.0%)
<b>Imports</b> (8.9%)	277		
<b>RES</b> (78.9%)	2,453	1,337	(43.0%)
<b>Crete RES</b> (0.0%)	0	0	(0.0%)
<b>BESS</b> (0.0%)	0	0	(0.0%)
<b>HV Load</b> (0.0%)	0	0	(0.0%)
<b>MV Load</b> (1.6%)	50	12	(0.4%)
<b>LV Load</b> (3.4%)	106	378	(12.2%)
<b>Crete Load</b> (0.0%)	0	0	(0.0%)
<b>Pumping</b> (0.0%)	0	0	(0.0%)
<b>Exports</b>		1,381	(44.4%)
<b>Sys.Losses</b> (0.0%)	0	0	(0.0%)
<b>D/R Load</b> (0.0%)	0	0	(0.0%)

