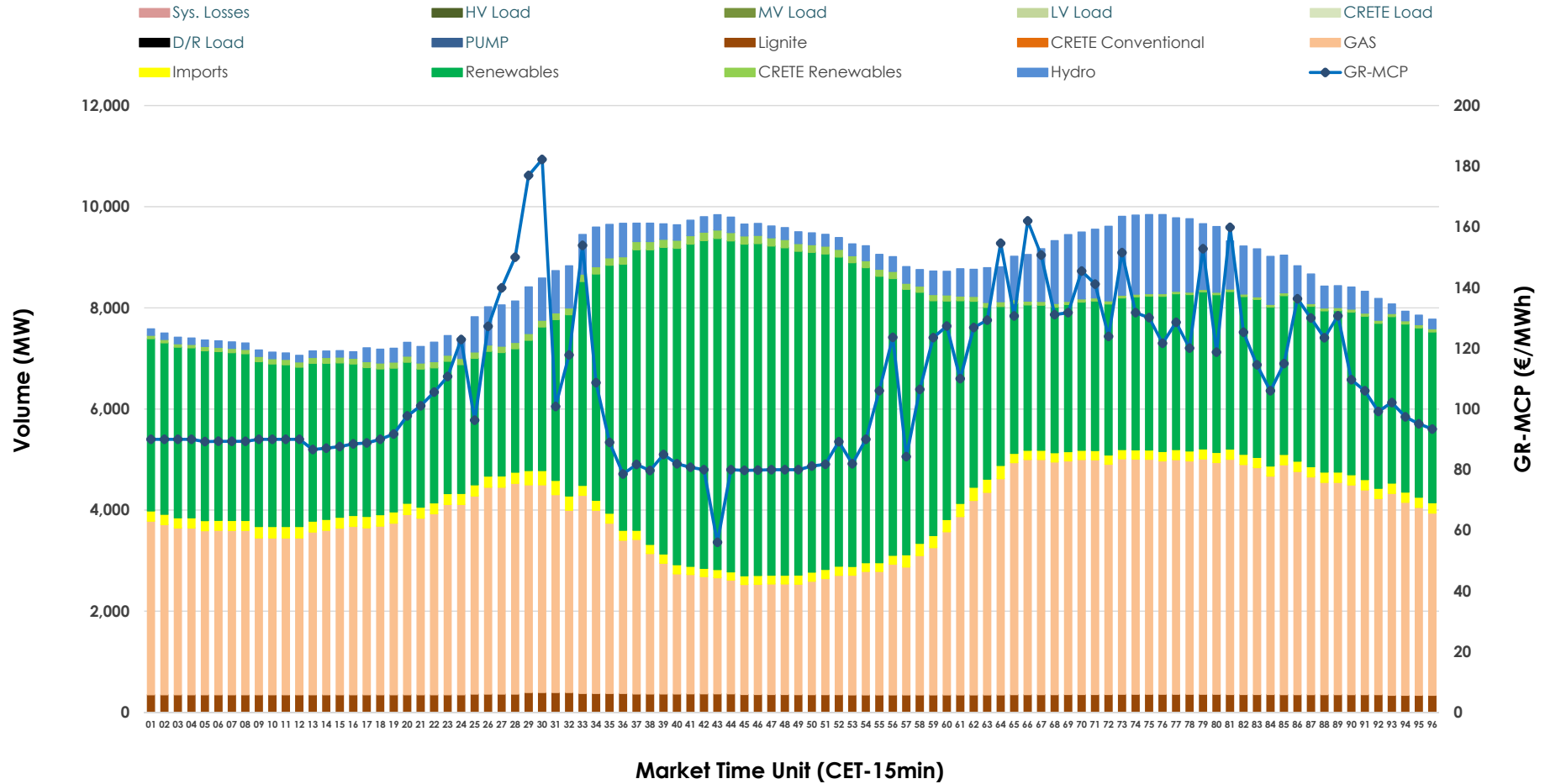


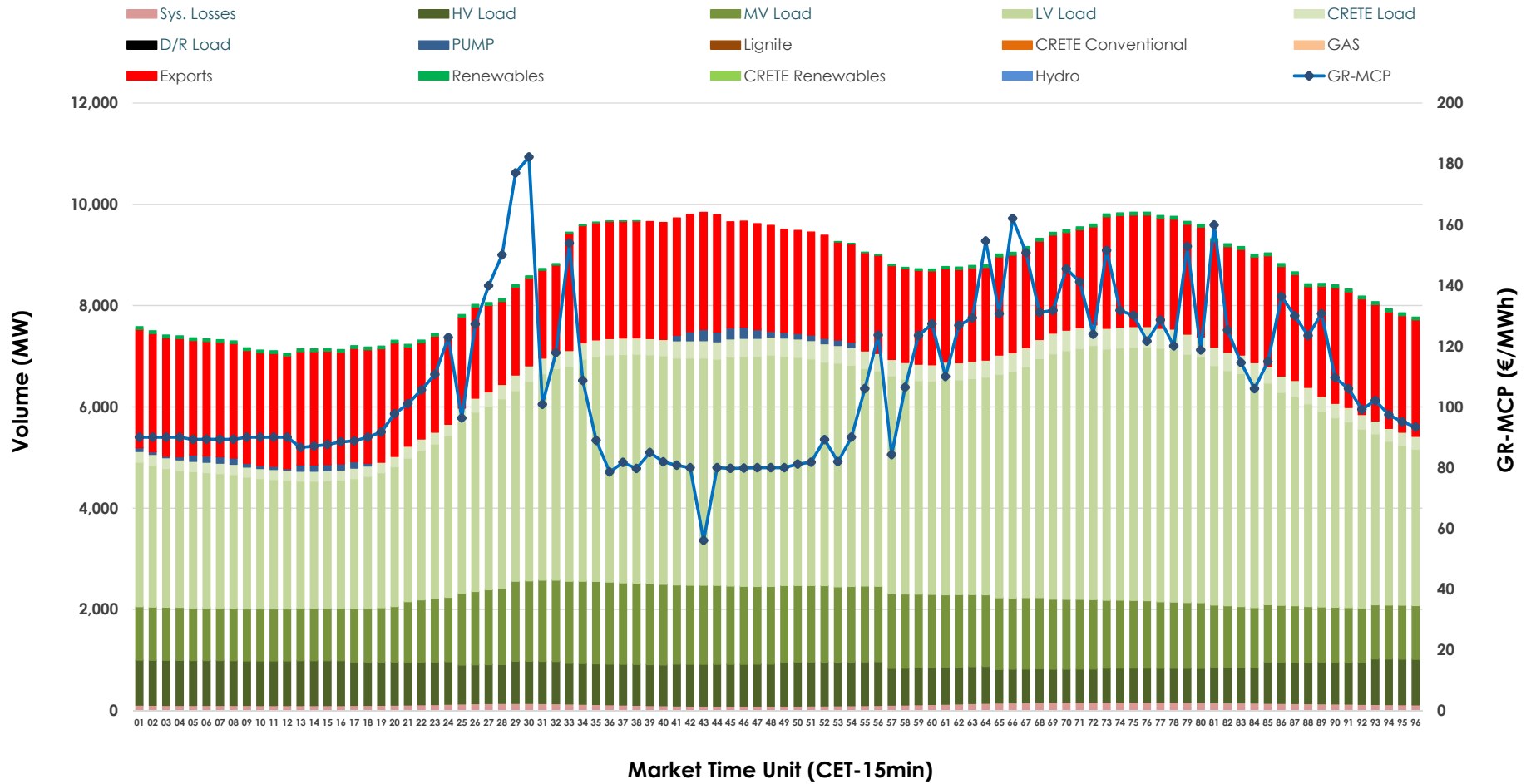


# Day-Ahead Market Outlook

09.01.2026 Day-Ahead Market - Sell



### 09.01.2026 Day-Ahead Market - Buy



### GR Bidding Zone Weekly Figures

Delivery Day	03.01	04.01	05.01	06.01	07.01	08.01	09.01
	↓ -6%	↔ 2%	↓ -19%	↔ 16%	↔ 6%	↓ -19%	↑ 48%
<b>Avg.MCP (€/MWh)</b>	89.27	90.93	73.73	85.48	90.70	73.45	108.47
<b>Max.MCP (€/MWh)</b>	114.95	123.30	108.12	98.60	138.50	163.42	182.25
<b>Min.MCP (€/MWh)</b>	74.94	60.00	0.01	41.75	65.00	0.00	56.04
	↔ 6%	↓ -5%	↓ -1%	↓ -5%	↔ 12%	↔ 8%	↔ 1%
<b>Tot.Vol(GWh)</b>	383.02	363.66	358.93	339.82	380.65	410.67	414.98

### Trades by Order Type

Delivery Day		03.01	04.01	05.01	06.01	07.01	08.01	09.01	
<b>Ord Price Type</b>		<b>Sell &amp; Buy Trades in (GWh) per Price Type</b>							<b>(%)</b>
<b>PPT</b>	(S)	67.086	68.347	69.218	62.058	69.541	76.678	65.990	31.80%
<b>HBD</b>	(S)	77.856	73.611	68.330	66.621	76.608	87.572	81.985	39.51%
<b>BLK</b>	(S)	46.419	39.715	41.920	41.230	44.176	41.087	59.296	28.58%
<b>CPL</b>	(S)	0.150	0.156	0.000	0.000	0.000	0.000	0.217	0.10%
<b>PPT</b>	(B)	16.042	16.629	14.953	14.186	14.479	14.380	14.439	6.96%
<b>HBD</b>	(B)	143.346	130.882	136.915	125.726	136.354	150.145	155.433	74.91%
<b>BLK</b>	(B)	0.000	0.000	0.000	0.000	0.000	0.000	0.000	0.00%
<b>CPL</b>	(B)	32.122	34.319	27.600	29.997	39.492	40.812	37.617	18.13%
		<b>Sell &amp; Buy Orders Traded per Price Type</b>							<b>(%)</b>
<b>PPT</b>	(S)	1356	1381	1408	1372	1426	1560	1626	34.55%
<b>HBD</b>	(S)	2742	2525	2371	2795	2885	2699	3050	64.81%
<b>BLK</b>	(S)	20	19	13	19	20	15	30	0.64%
<b>PPT</b>	(B)	2344	2484	2327	2309	2284	2267	2285	35.51%
<b>HBD</b>	(B)	4155	4106	4291	4113	4096	4207	4149	64.49%
<b>BLK</b>	(B)	0	0	0	0	0	0	0	0.00%

**MCP** Market Clearing Price (€/MWh)  
**PPT** Priority Price-Taking  
**HBD** Hybrid  
**BLK** Block  
**CPL** Market Coupling Flow

### Trade's Volume Mix

		Sell - MWh	Buy - MWh	
<b>Lignite</b>	(4.1%)	8,508	0	(0.0%)
<b>Crete Conv.</b>	(0.0%)	0	0	(0.0%)
<b>Gas</b>	(41.2%)	85,425	0	(0.0%)
<b>Hydro</b>	(6.4%)	13,382	0	(0.0%)
<b>Imports</b>	(2.4%)	4,930		
<b>RES</b>	(44.7%)	92,768	968	(0.5%)
<b>Crete RES</b>	(1.2%)	2,476	0	(0.0%)
<b>HV Load</b>	(0.0%)	0	19,152	(9.2%)
<b>MV Load</b>	(0.0%)	0	31,682	(15.3%)
<b>LV Load</b>	(0.0%)	0	94,076	(45.3%)
<b>Crete Load</b>	(0.0%)	0	7,396	(3.6%)
<b>Pumping</b>	(0.0%)	0	930	(0.4%)
<b>Exports</b>			50,311	(24.2%)
<b>Sys.Losses</b>	(0.0%)	0	2,974	(1.4%)
<b>D/R Load</b>	(0.0%)	0	0	(0.0%)

