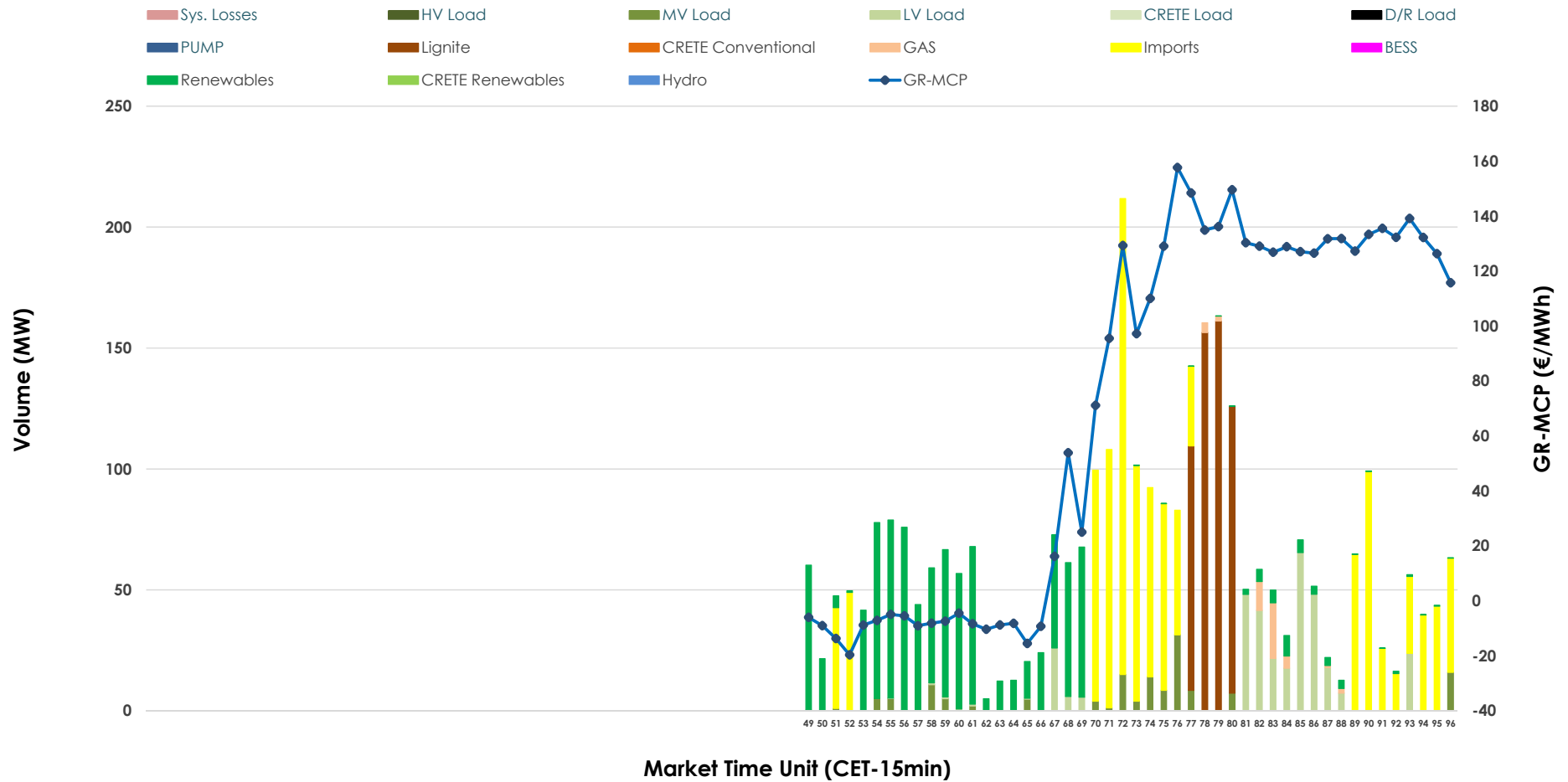


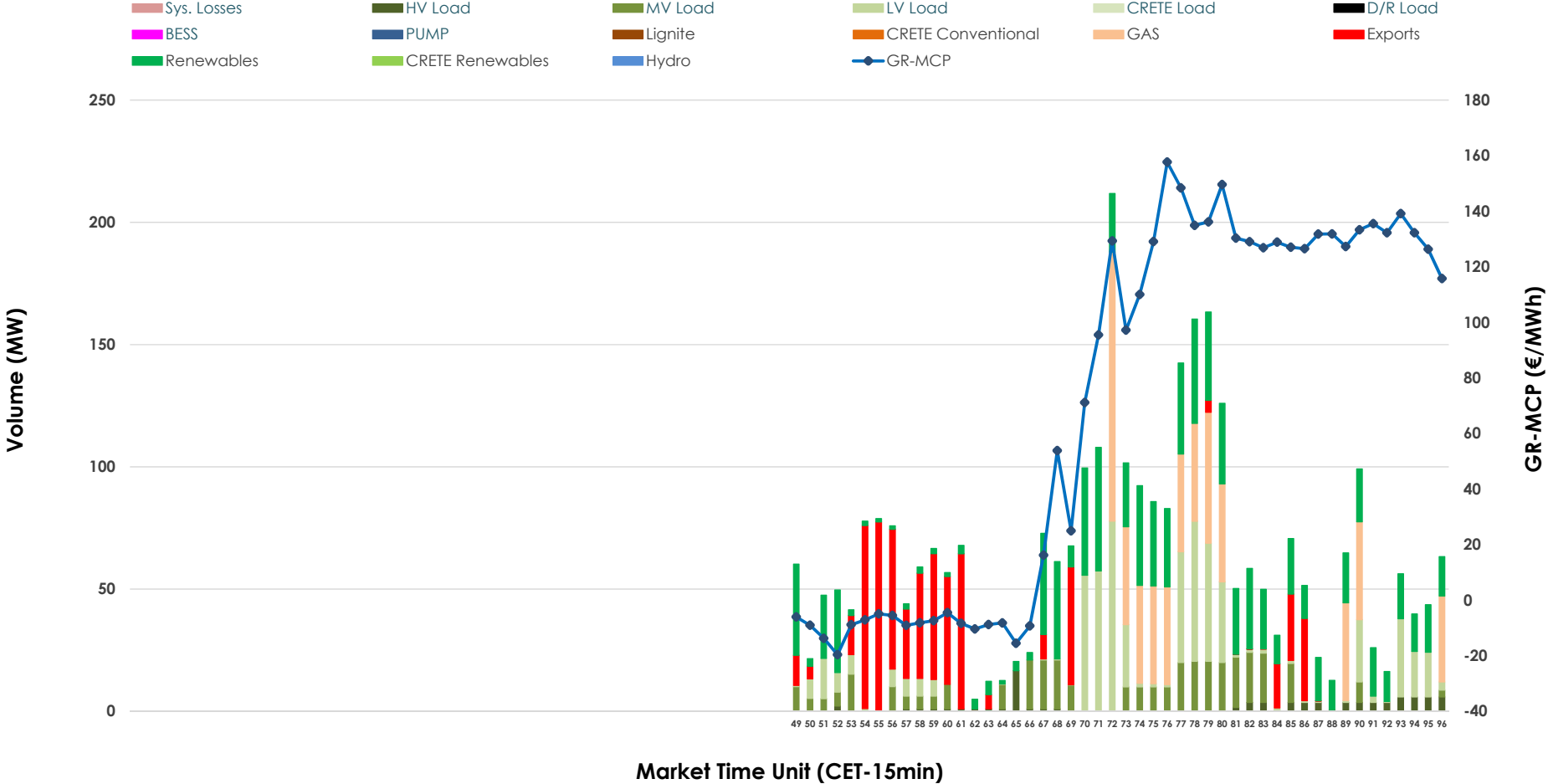


IDA '3' Market Outlook

28.04.2026 IDA '3' Market - Sell



28.04.2026 IDA '3' Market - Buy



GR Bidding Zone Weekly Figures

Delivery Day	22.04	23.04	24.04	25.04	26.04	27.04	28.04
			↑ 49%	↓ -41%	↔ 15%	↔ 15%	↔ 4%
Avg.MCP (€/MWh)	N/M	57.84	86.15	50.89	58.43	67.48	70.09
Max.MCP (€/MWh)	N/M	220.01	231.35	181.23	137.21	184.30	157.70
Min.MCP (€/MWh)	N/M	-97.63	0.00	-49.00	-65.00	-15.66	-19.62
			↑ 159%	↓ -46%	↔ -5%	↑ 53%	↔ -13%
Tot.Vol(GWh)	N/M	0.89	2.31	1.25	1.18	1.81	1.58

Trades by Order Type

Delivery Day		22.04	23.04	24.04	25.04	26.04	27.04	28.04		
Ord Price Type		Sell & Buy Trades in (GWh) per Price Type							(%)	
PPT	(S)		0.000	0.000	0.000	0.000	0.000	0.000	0.00%	
HBD	(S)		0.345	0.961	0.579	0.491	0.748	0.490	62.14%	
BLK	(S)		0.000	0.000	0.000	0.000	0.000	0.000	0.00%	
CPL	(S)		0.101	0.194	0.045	0.099	0.157	0.298	37.86%	
PPT	(B)		0.000	0.000	0.000	0.000	0.000	0.000	0.00%	
HBD	(B)		0.430	1.072	0.487	0.493	0.608	0.633	80.28%	
BLK	(B)		0.000	0.000	0.000	0.000	0.000	0.000	0.00%	
CPL	(B)		0.016	0.083	0.137	0.097	0.296	0.155	19.72%	
			Sell & Buy Orders Traded per Price Type							(%)
PPT	(S)		0	0	0	0	0	0	0.00%	
HBD	(S)		101	260	174	148	192	105	100.00%	
BLK	(S)		0	0	0	0	0	0	0.00%	
PPT	(B)		0	0	0	0	0	0	0.00%	
HBD	(B)		145	193	94	85	175	247	100.00%	
BLK	(B)		0	0	0	0	0	0	0.00%	

- MCP** Market Clearing Price (€/MWh)
- PPT** Priority Price-Taking
- HBD** Hybrid
- BLK** Block
- CPL** Market Coupling Flow

Trade's Volume Mix

	Sell - MWh	Buy - MWh	
Lignite (17.0%)	134	0	(0.0%)
Crete Conv. (0.0%)	0	0	(0.0%)
Gas (1.5%)	12	140	(17.7%)
Hydro (0.0%)	0	0	(0.0%)
Imports (37.9%)	298		
RES (28.3%)	223	233	(29.5%)
Crete RES (0.0%)	0	0	(0.0%)
BESS (0.0%)	0	0	(0.0%)
HV Load (0.0%)	0	22	(2.8%)
MV Load (4.6%)	36	92	(11.7%)
LV Load (10.6%)	84	146	(18.6%)
Crete Load (0.0%)	0	0	(0.0%)
Pumping (0.0%)	0	0	(0.0%)
Exports		155	(19.7%)
Sys.Losses (0.0%)	0	0	(0.0%)
D/R Load (0.0%)	0	0	(0.0%)

