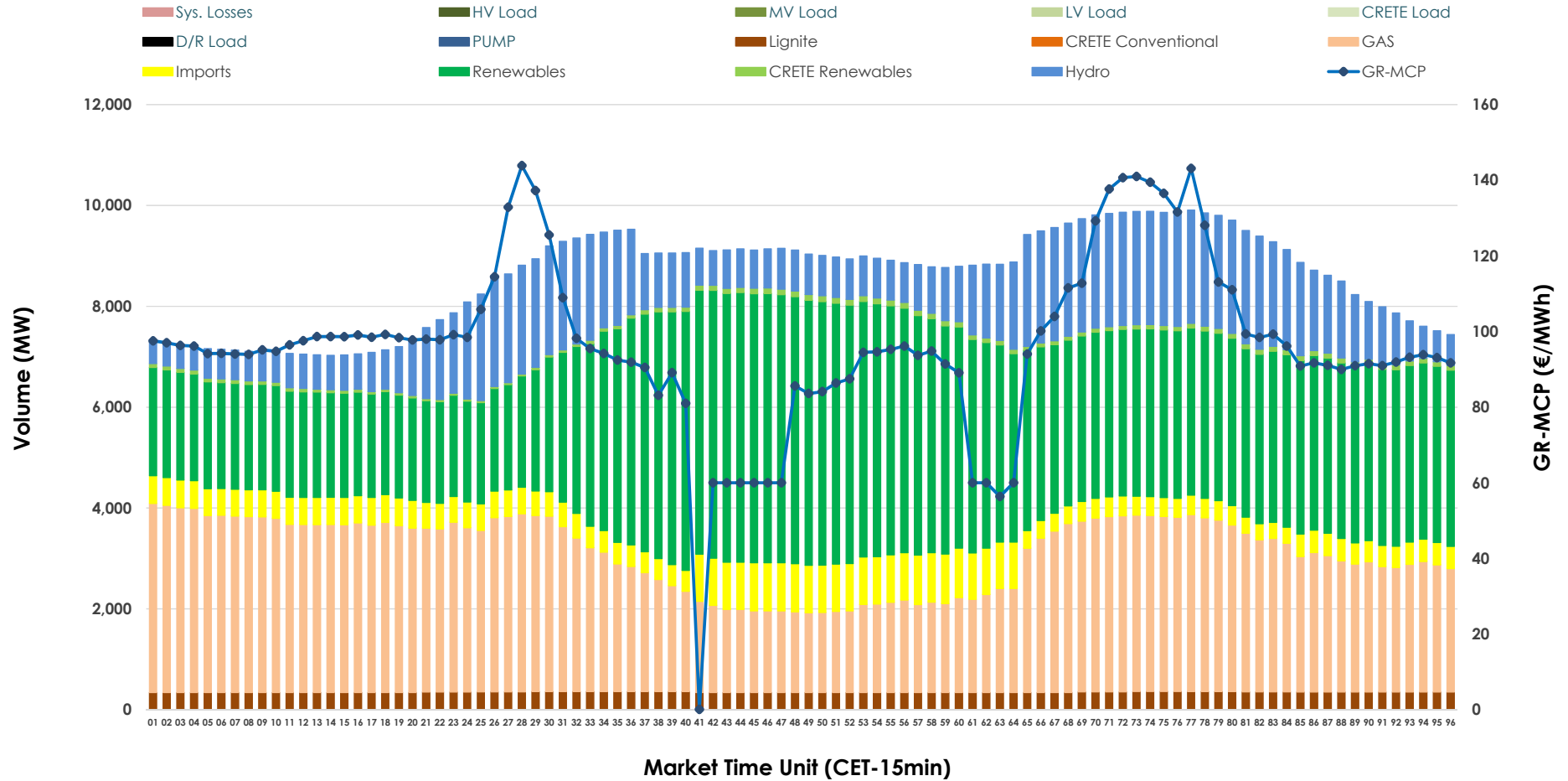


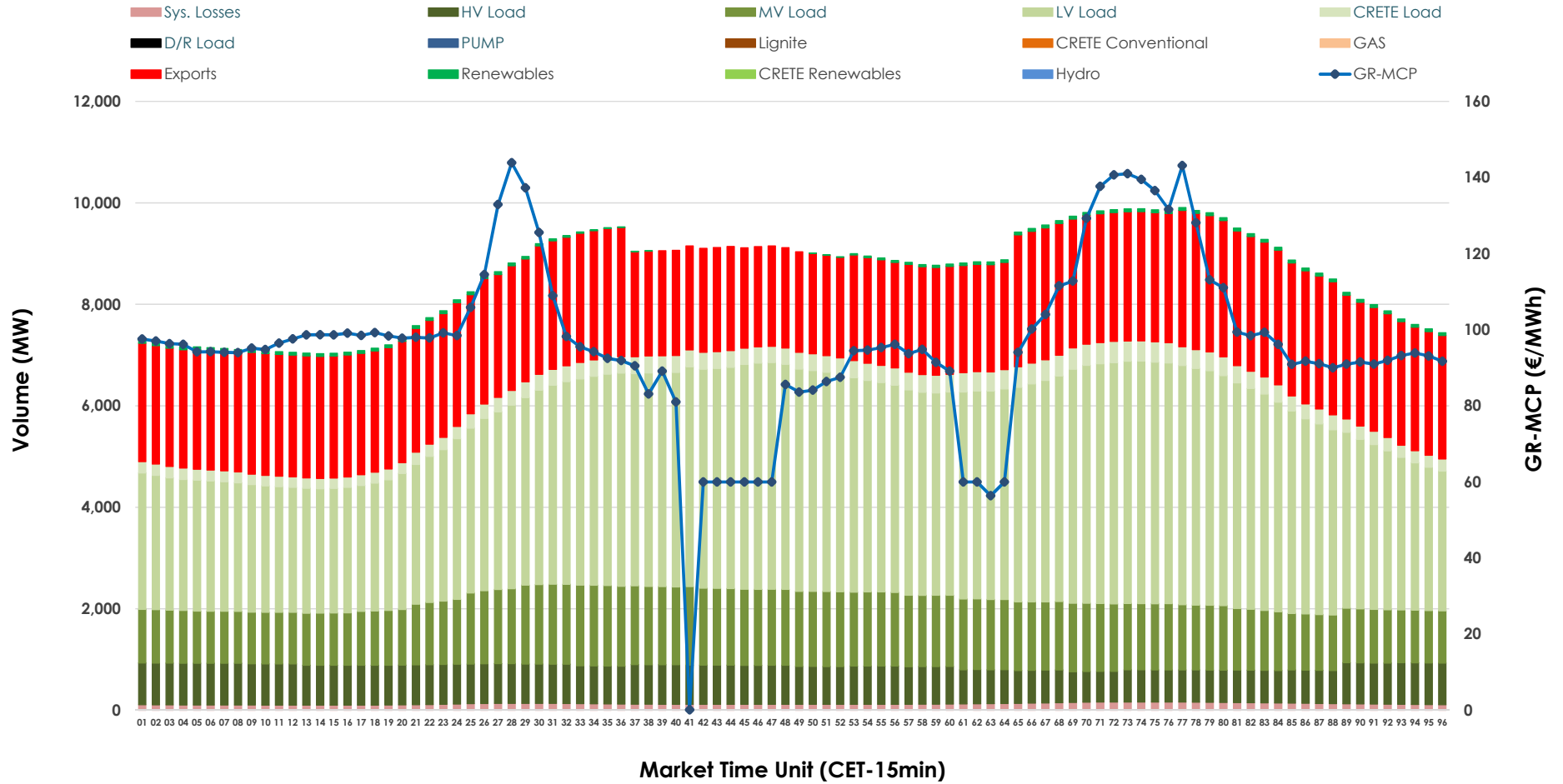


Day-Ahead Market Outlook

06.02.2026 Day-Ahead Market - Sell



06.02.2026 Day-Ahead Market - Buy



GR Bidding Zone Weekly Figures

Delivery Day	31.01	01.02	02.02	03.02	04.02	05.02	06.02
	↗ 8%	↘ -4%	↗ 20%	→ 0%	↘ -18%	↗ 1%	↘ -5%
Avg.MCP (€/MWh)	105.72	101.14	121.82	121.82	100.27	101.12	96.42
Max.MCP (€/MWh)	155.04	134.83	246.62	216.88	137.73	158.84	143.87
Min.MCP (€/MWh)	47.50	60.00	89.15	77.88	0.01	52.50	0.10
	↘ -5%	↘ -2%	↗ 12%	↘ -2%	→ 0%	↗ 1%	↘ -3%
Tot.Vol(GWh)	391.47	383.04	429.13	420.24	422.19	425.83	412.48

Trades by Order Type

Delivery Day		31.01	01.02	02.02	03.02	04.02	05.02	06.02	
Ord Price Type		Sell & Buy Trades in (GWh) per Price Type							(%)
PPT	(S)	86.154	93.785	94.401	86.646	99.050	100.032	98.643	47.83%
HBD	(S)	63.490	61.041	73.737	71.789	71.845	75.250	72.470	35.14%
BLK	(S)	46.080	34.935	44.589	48.842	40.198	37.633	32.126	15.58%
CPL	(S)	0.010	1.760	1.837	2.844	0.000	0.000	3.000	1.45%
PPT	(B)	13.273	12.883	14.412	14.445	13.914	13.913	13.578	6.58%
HBD	(B)	144.217	139.193	157.240	156.715	151.872	152.005	148.188	71.85%
BLK	(B)	0.000	0.000	0.000	0.000	0.000	0.000	0.000	0.00%
CPL	(B)	38.244	39.446	42.912	38.961	45.307	46.997	44.473	21.56%
		Sell & Buy Orders Traded per Price Type							(%)
PPT	(S)	2238	2123	2177	2232	2251	2154	2193	43.82%
HBD	(S)	2948	2632	2732	2988	2798	2809	2799	55.92%
BLK	(S)	17	18	19	15	15	13	13	0.26%
PPT	(B)	2230	2337	2229	2216	2234	2227	2220	35.34%
HBD	(B)	3974	3890	3882	3884	3985	3881	4062	64.66%
BLK	(B)	0	0	0	0	0	0	0	0.00%

- MCP** Market Clearing Price (€/MWh)
- PPT** Priority Price-Taking
- HBD** Hybrid
- BLK** Block
- CPL** Market Coupling Flow

Trade's Volume Mix

	Sell - MWh	Buy - MWh	
Lignite (4.0%)	8,340	0	(0.0%)
Crete Conv. (0.0%)	0	0	(0.0%)
Gas (32.4%)	66,838	0	(0.0%)
Hydro (15.7%)	32,303	0	(0.0%)
Imports (6.7%)	13,883		
RES (40.2%)	82,913	1,010	(0.5%)
Crete RES (1.0%)	1,962	0	(0.0%)
HV Load (0.0%)	0	17,800	(8.6%)
MV Load (0.0%)	0	30,994	(15.0%)
LV Load (0.0%)	0	89,374	(43.3%)
Crete Load (0.0%)	0	7,356	(3.6%)
Pumping (0.0%)	0	0	(0.0%)
Exports		56,702	(27.5%)
Sys.Losses (0.0%)	0	3,004	(1.5%)
D/R Load (0.0%)	0	0	(0.0%)

