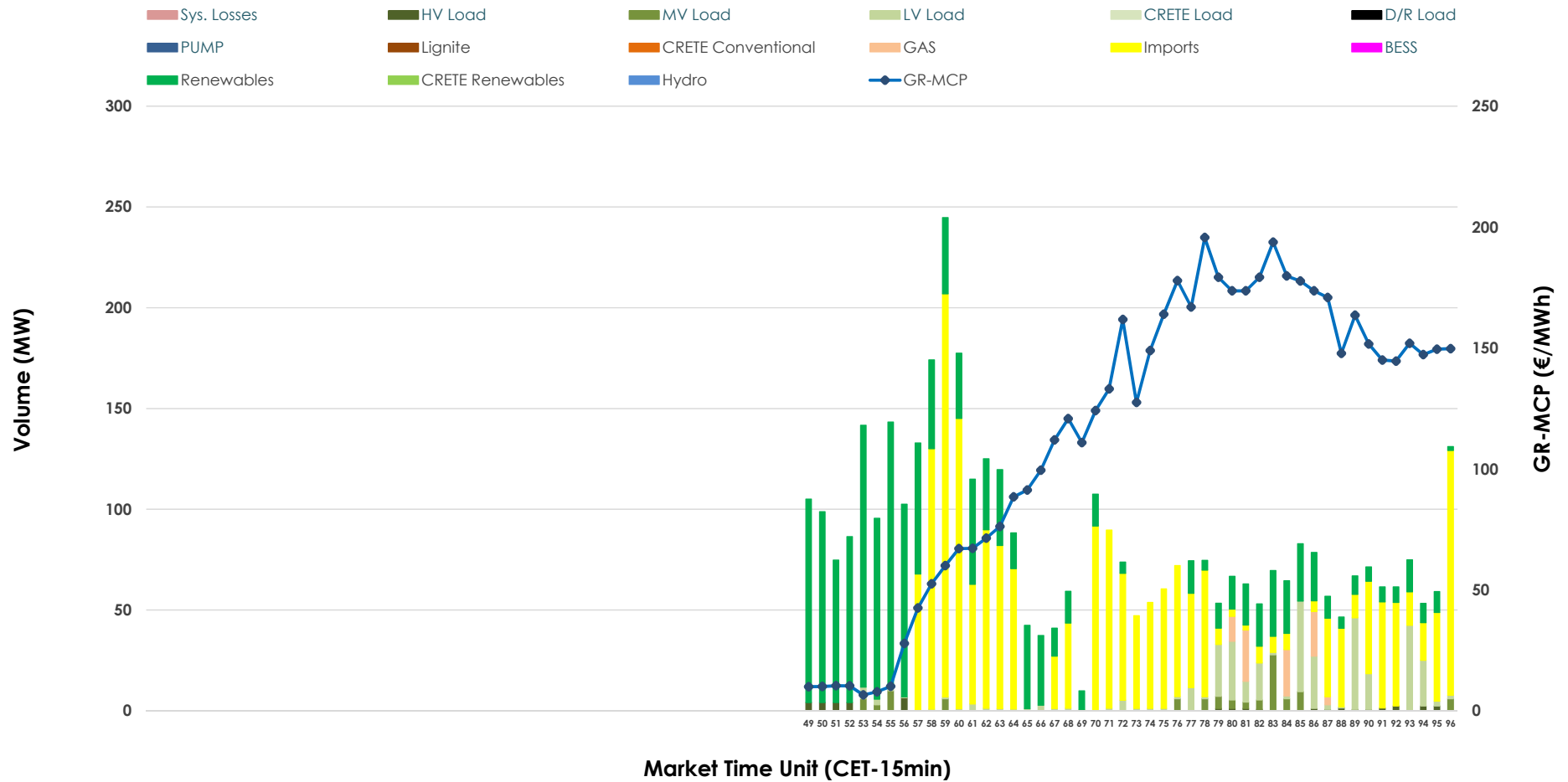


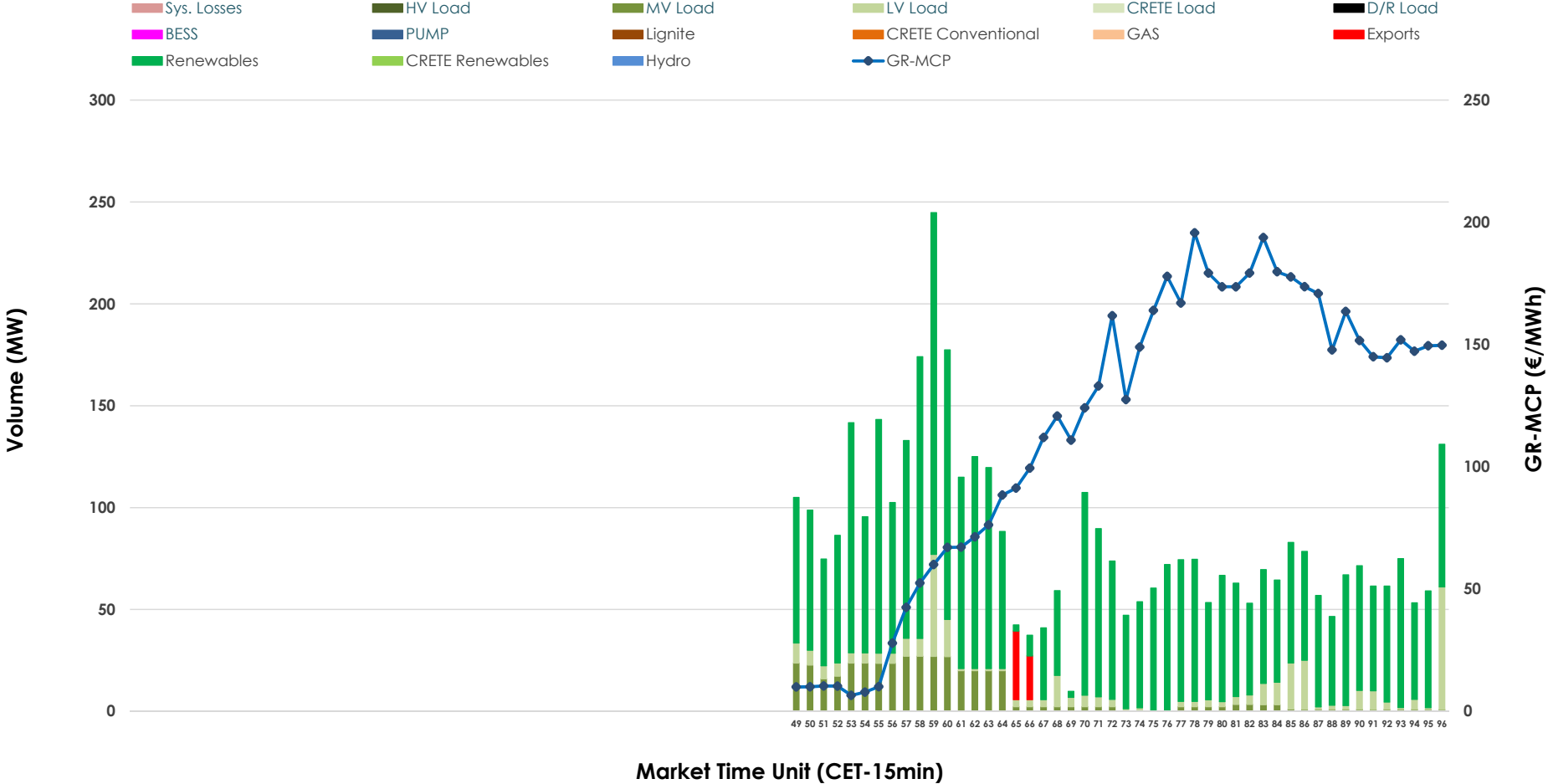


# IDA '3' Market Outlook

08.06.2026 IDA '3' Market - Sell



08.06.2026 IDA '3' Market - Buy



### GR Bidding Zone Weekly Figures

Delivery Day	02.06	03.06	04.06	05.06	06.06	07.06	08.06
	👇 -14%	👇 -12%	👆 17%	👆 20%	👇 -44%	👉 0%	👆 72%
<b>Avg.MCP (€/MWh)</b>	96.79	84.90	99.36	119.09	66.44	66.65	114.70
<b>Max.MCP (€/MWh)</b>	171.85	151.86	203.24	180.60	150.74	149.92	195.70
<b>Min.MCP (€/MWh)</b>	1.83	7.31	3.05	48.90	-32.00	-11.56	6.55
	👇 -32%	👆 21%	👇 -16%	👇 -32%	👆 97%	👇 -38%	👆 26%
<b>Tot.Vol(GWh)</b>	1.93	2.33	1.95	1.32	2.60	1.62	2.04

### Trades by Order Type

Delivery Day		02.06	03.06	04.06	05.06	06.06	07.06	08.06	
<b>Ord Price Type</b>		<b>Sell &amp; Buy Trades in (GWh) per Price Type</b>							<b>(%)</b>
<b>PPT</b>	(S)	0.000	0.000	0.000	0.000	0.000	0.000	0.000	0.00%
<b>HBD</b>	(S)	0.682	0.916	0.423	0.378	0.223	0.713	0.529	51.80%
<b>BLK</b>	(S)	0.000	0.000	0.000	0.000	0.000	0.000	0.000	0.00%
<b>CPL</b>	(S)	0.284	0.251	0.552	0.282	1.079	0.097	0.492	48.20%
<b>PPT</b>	(B)	0.000	0.000	0.000	0.000	0.000	0.000	0.000	0.00%
<b>HBD</b>	(B)	0.786	0.667	0.905	0.504	1.301	0.500	1.007	98.65%
<b>BLK</b>	(B)	0.000	0.000	0.000	0.000	0.000	0.000	0.000	0.00%
<b>CPL</b>	(B)	0.180	0.500	0.069	0.156	0.000	0.310	0.014	1.35%
		<b>Sell &amp; Buy Orders Traded per Price Type</b>							<b>(%)</b>
<b>PPT</b>	(S)	0	0	0	0	0	0	0	0.00%
<b>HBD</b>	(S)	189	244	146	238	58	79	133	100.00%
<b>BLK</b>	(S)	0	0	0	0	0	0	0	0.00%
<b>PPT</b>	(B)	0	0	0	0	0	0	0	0.00%
<b>HBD</b>	(B)	277	260	273	216	273	172	255	100.00%
<b>BLK</b>	(B)	0	0	0	0	0	0	0	0.00%

- MCP** Market Clearing Price (€/MWh)
- PPT** Priority Price-Taking
- HBD** Hybrid
- BLK** Block
- CPL** Market Coupling Flow

### Trade's Volume Mix

	Sell - MWh	Buy - MWh	
<b>Lignite</b> (0.0%)	0	0	(0.0%)
<b>Crete Conv.</b> (0.0%)	0	0	(0.0%)
<b>Gas</b> (2.1%)	22	0	(0.0%)
<b>Hydro</b> (0.0%)	0	0	(0.0%)
<b>Imports</b> (48.2%)	492		
<b>RES</b> (37.7%)	385	811	(79.4%)
<b>Crete RES</b> (0.0%)	0	0	(0.0%)
<b>BESS</b> (0.0%)	0	0	(0.0%)
<b>HV Load</b> (1.0%)	10	0	(0.0%)
<b>MV Load</b> (2.6%)	26	104	(10.2%)
<b>LV Load</b> (8.4%)	86	92	(9.1%)
<b>Crete Load</b> (0.0%)	0	0	(0.0%)
<b>Pumping</b> (0.0%)	0	0	(0.0%)
<b>Exports</b>		14	(1.3%)
<b>Sys.Losses</b> (0.0%)	0	0	(0.0%)
<b>D/R Load</b> (0.0%)	0	0	(0.0%)

