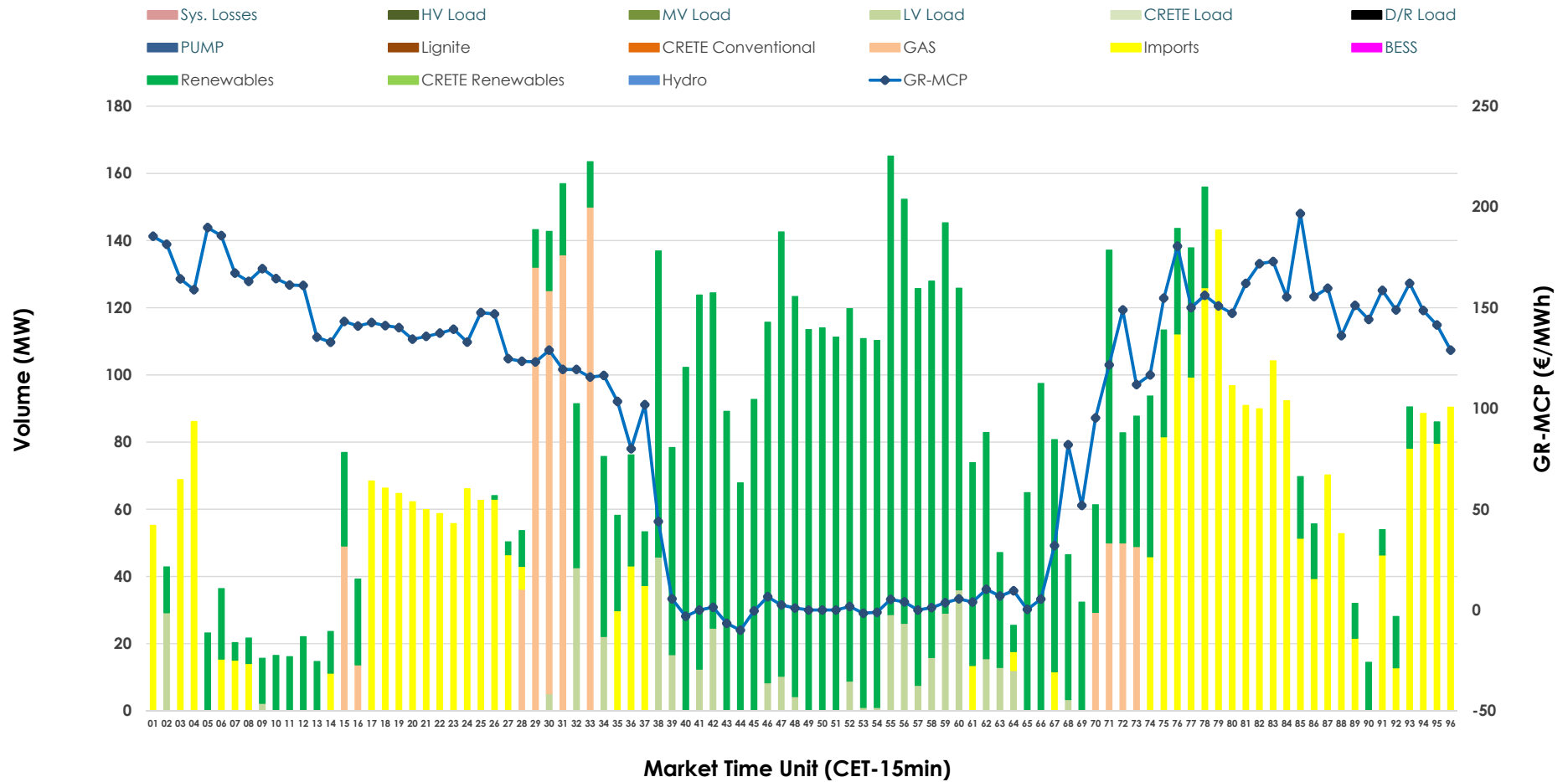


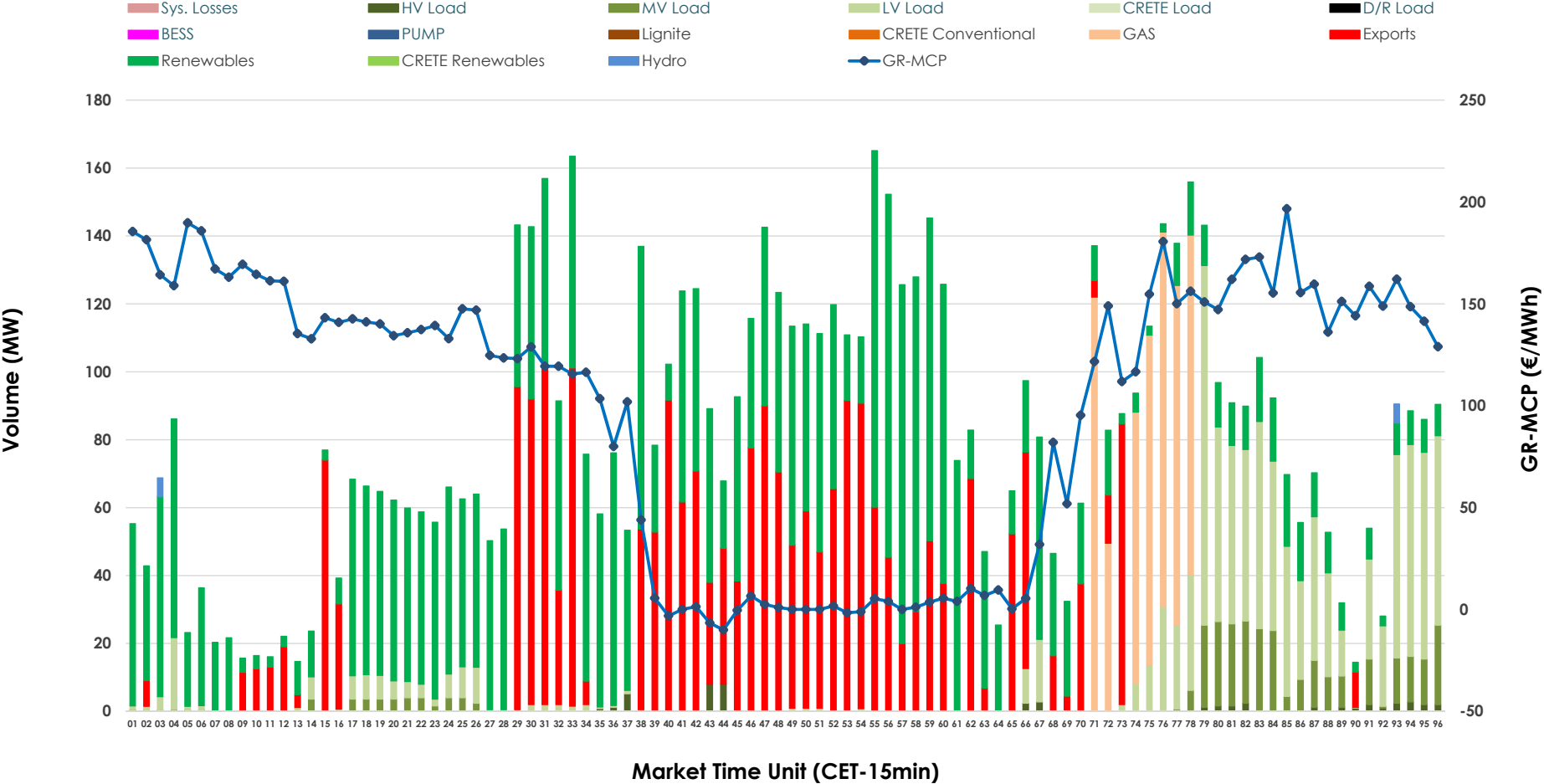


IDA '2' Market Outlook

09.05.2026 IDA '2' Market - Sell



09.05.2026 IDA '2' Market - Buy



GR Bidding Zone Weekly Figures

Delivery Day	03.05	04.05	05.05	06.05	07.05	08.05	09.05
	↗ 8%	↕ 47%	↗ 2%	→ 0%	↗ 24%	↘ -7%	↘ -20%
Avg.MCP (€/MWh)	71.66	105.41	107.48	107.56	133.29	123.78	99.47
Max.MCP (€/MWh)	187.97	304.04	277.05	202.53	189.73	167.32	196.67
Min.MCP (€/MWh)	-20.00	-15.01	-11.79	-8.32	100.24	66.00	-10.00
	↘ -25%	↗ 8%	↕ 60%	↘ -51%	↕ 63%	↘ -36%	↘ -5%
Tot.Vol(GWh)	4.66	5.04	8.08	4.00	6.53	4.16	3.95

Trades by Order Type

Delivery Day		03.05	04.05	05.05	06.05	07.05	08.05	09.05	
Ord Price Type		Sell & Buy Trades in (GWh) per Price Type							(%)
PPT	(S)	0.000	0.000	0.000	0.000	0.000	0.000	0.000	0.00%
HBD	(S)	1.733	1.725	1.827	1.897	2.001	1.774	1.276	64.56%
BLK	(S)	0.000	0.000	0.000	0.000	0.000	0.000	0.000	0.00%
CPL	(S)	0.599	0.793	2.212	0.102	1.266	0.303	0.700	35.44%
PPT	(B)	0.000	0.000	0.000	0.000	0.000	0.000	0.000	0.00%
HBD	(B)	2.200	2.371	4.034	1.120	1.968	1.038	1.407	71.17%
BLK	(B)	0.000	0.000	0.000	0.000	0.000	0.000	0.000	0.00%
CPL	(B)	0.132	0.147	0.005	0.878	1.300	1.039	0.570	28.83%
		Sell & Buy Orders Traded per Price Type							(%)
PPT	(S)	0	0	0	0	0	0	0	0.00%
HBD	(S)	305	322	409	223	283	320	162	100.00%
BLK	(S)	0	0	0	0	0	0	0	0.00%
PPT	(B)	0	0	0	0	0	0	0	0.00%
HBD	(B)	466	562	374	345	454	354	486	100.00%
BLK	(B)	0	0	0	0	0	0	0	0.00%

- MCP** Market Clearing Price (€/MWh)
- PPT** Priority Price-Taking
- HBD** Hybrid
- BLK** Block
- CPL** Market Coupling Flow

Trade's Volume Mix

		Sell - MWh	Buy - MWh	
Lignite	(0.0%)	0	0	(0.0%)
Crete Conv.	(0.0%)	0	0	(0.0%)
Gas	(10.3%)	204	165	(8.3%)
Hydro	(0.0%)	0	3	(0.1%)
Imports	(35.4%)	700		
RES	(48.9%)	967	874	(44.2%)
Crete RES	(0.0%)	0	0	(0.0%)
BESS	(0.0%)	0	0	(0.0%)
HV Load	(0.0%)	0	13	(0.7%)
MV Load	(0.0%)	0	79	(4.0%)
LV Load	(5.3%)	105	273	(13.8%)
Crete Load	(0.0%)	0	0	(0.0%)
Pumping	(0.0%)	0	0	(0.0%)
Exports			570	(28.8%)
Sys.Losses	(0.0%)	0	0	(0.0%)
D/R Load	(0.0%)	0	0	(0.0%)

