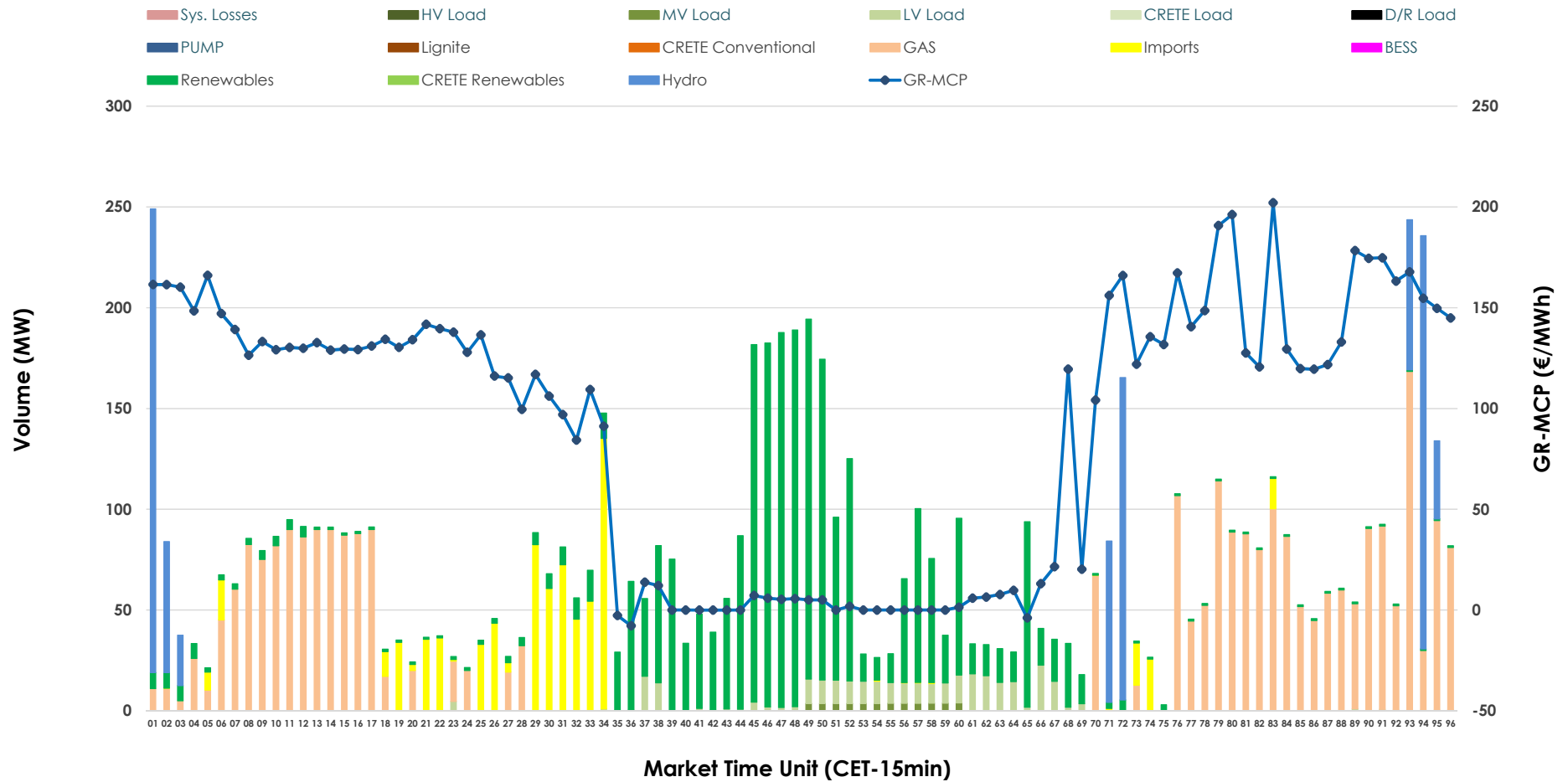


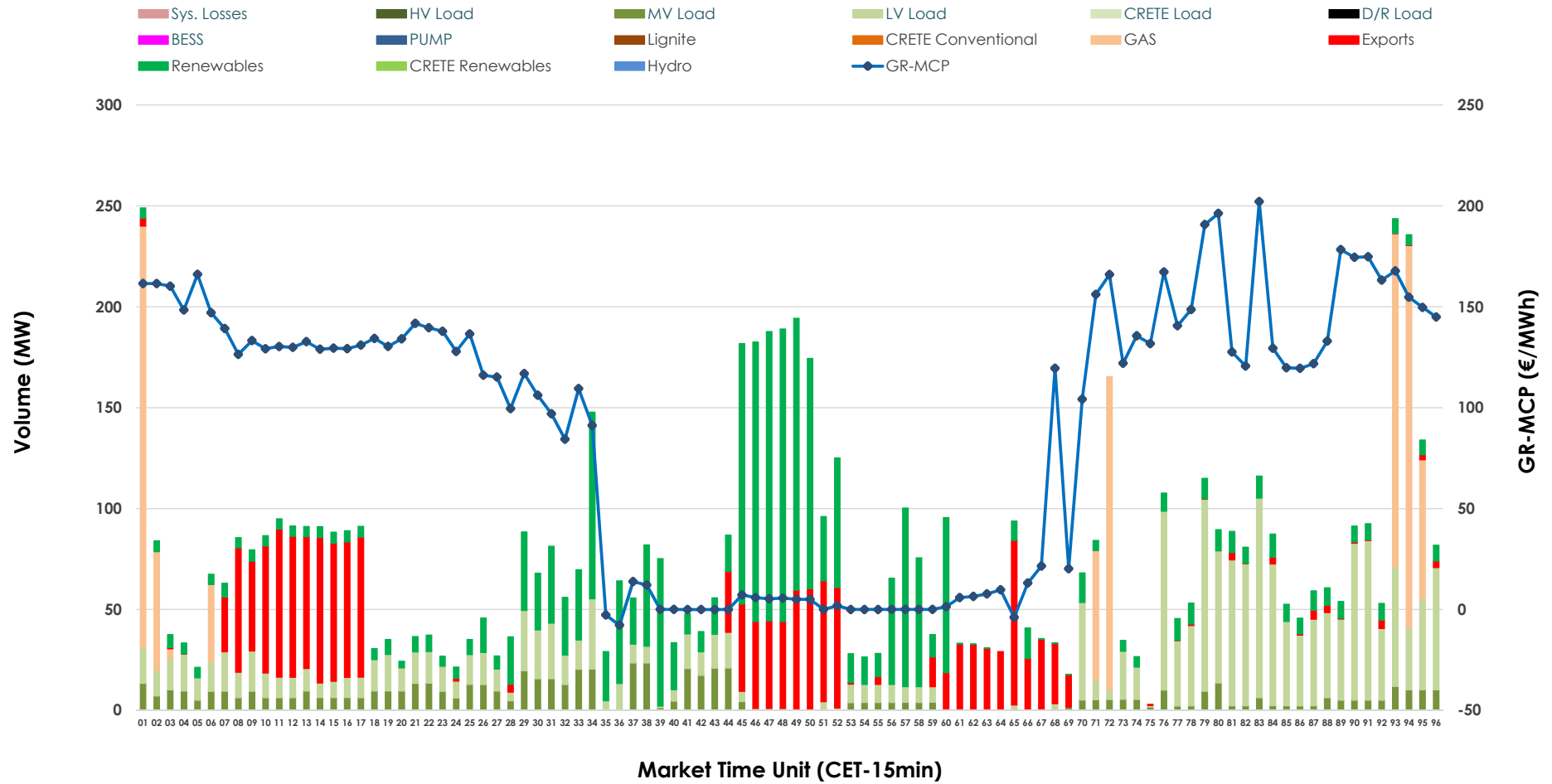


IDA '1' Market Outlook

10.05.2026 IDA '1' Market - Sell



10.05.2026 IDA '1' Market - Buy



GR Bidding Zone Weekly Figures

Delivery Day	04.05	05.05	06.05	07.05	08.05	09.05	10.05
	↑ 49%	→ -1%	↔ 2%	↔ 20%	↔ 1%	↓ -11%	↓ -17%
Avg.MCP (€/MWh)	99.64	98.84	101.05	121.19	122.42	108.76	90.58
Max.MCP (€/MWh)	263.41	253.79	205.48	183.77	172.30	227.06	202.09
Min.MCP (€/MWh)	-10.89	-12.30	-9.97	21.99	61.50	-7.61	-7.78
	↓ -15%	↔ 11%	↓ -17%	↑ 59%	↓ -3%	→ 0%	↓ -15%
Tot.Vol(GWh)	3.03	3.38	2.80	4.46	4.31	4.33	3.69

Trades by Order Type

Delivery Day		04.05	05.05	06.05	07.05	08.05	09.05	10.05	
Ord Price Type		Sell & Buy Trades in (GWh) per Price Type							(%)
PPT	(S)	0.000	0.000	0.000	0.000	0.000	0.000	0.000	0.00%
HBD	(S)	1.385	1.457	0.962	1.499	1.993	1.767	1.660	89.90%
BLK	(S)	0.000	0.000	0.000	0.000	0.000	0.000	0.000	0.00%
CPL	(S)	0.132	0.231	0.439	0.732	0.163	0.400	0.187	10.10%
PPT	(B)	0.000	0.000	0.000	0.000	0.000	0.000	0.000	0.00%
HBD	(B)	1.216	1.327	1.329	2.182	1.176	1.927	1.469	79.53%
BLK	(B)	0.000	0.000	0.000	0.000	0.000	0.000	0.000	0.00%
CPL	(B)	0.301	0.361	0.072	0.049	0.980	0.240	0.378	20.47%
		Sell & Buy Orders Traded per Price Type							(%)
PPT	(S)	0	0	0	0	0	0	0	0.00%
HBD	(S)	415	362	155	234	405	360	310	100.00%
BLK	(S)	0	0	0	0	0	0	0	0.00%
PPT	(B)	0	0	0	0	0	0	0	0.00%
HBD	(B)	644	763	823	592	532	554	945	100.00%
BLK	(B)	0	0	0	0	0	0	0	0.00%

- MCP** Market Clearing Price (€/MWh)
- PPT** Priority Price-Taking
- HBD** Hybrid
- BLK** Block
- CPL** Market Coupling Flow

Trade's Volume Mix

	Sell - MWh	Buy - MWh	
Lignite	0	0	(0.0%)
Crete Conv.	0	0	(0.0%)
Gas	718	239	(12.9%)
Hydro	220	0	(0.0%)
Imports	187		
RES	637	556	(30.1%)
Crete RES	0	0	(0.0%)
BESS	0	0	(0.0%)
HV Load	0	0	(0.0%)
MV Load	11	170	(9.2%)
LV Load	74	504	(27.3%)
Crete Load	0	0	(0.0%)
Pumping	0	0	(0.0%)
Exports		378	(20.5%)
Sys.Losses	0	0	(0.0%)
D/R Load	0	0	(0.0%)

