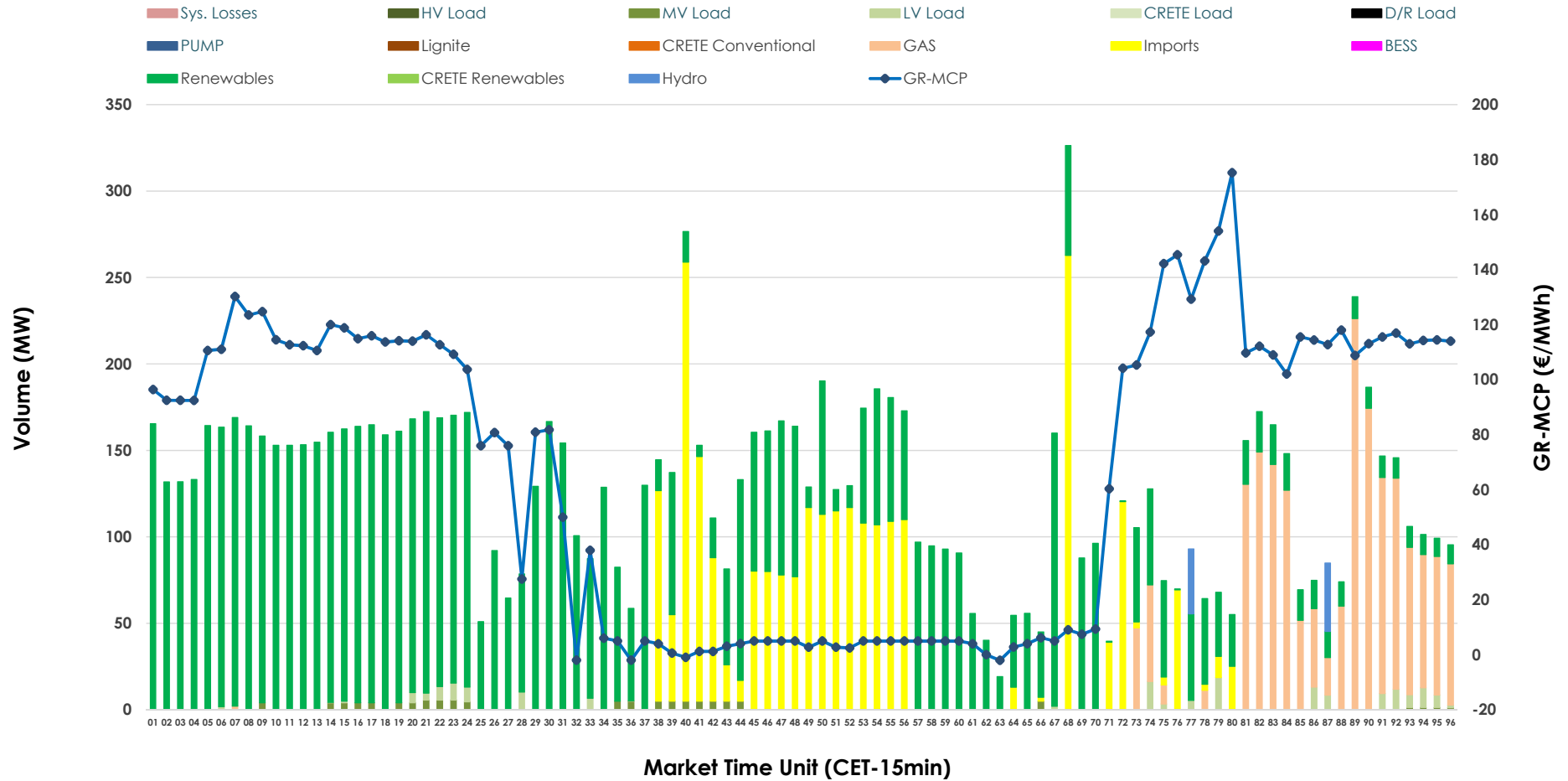


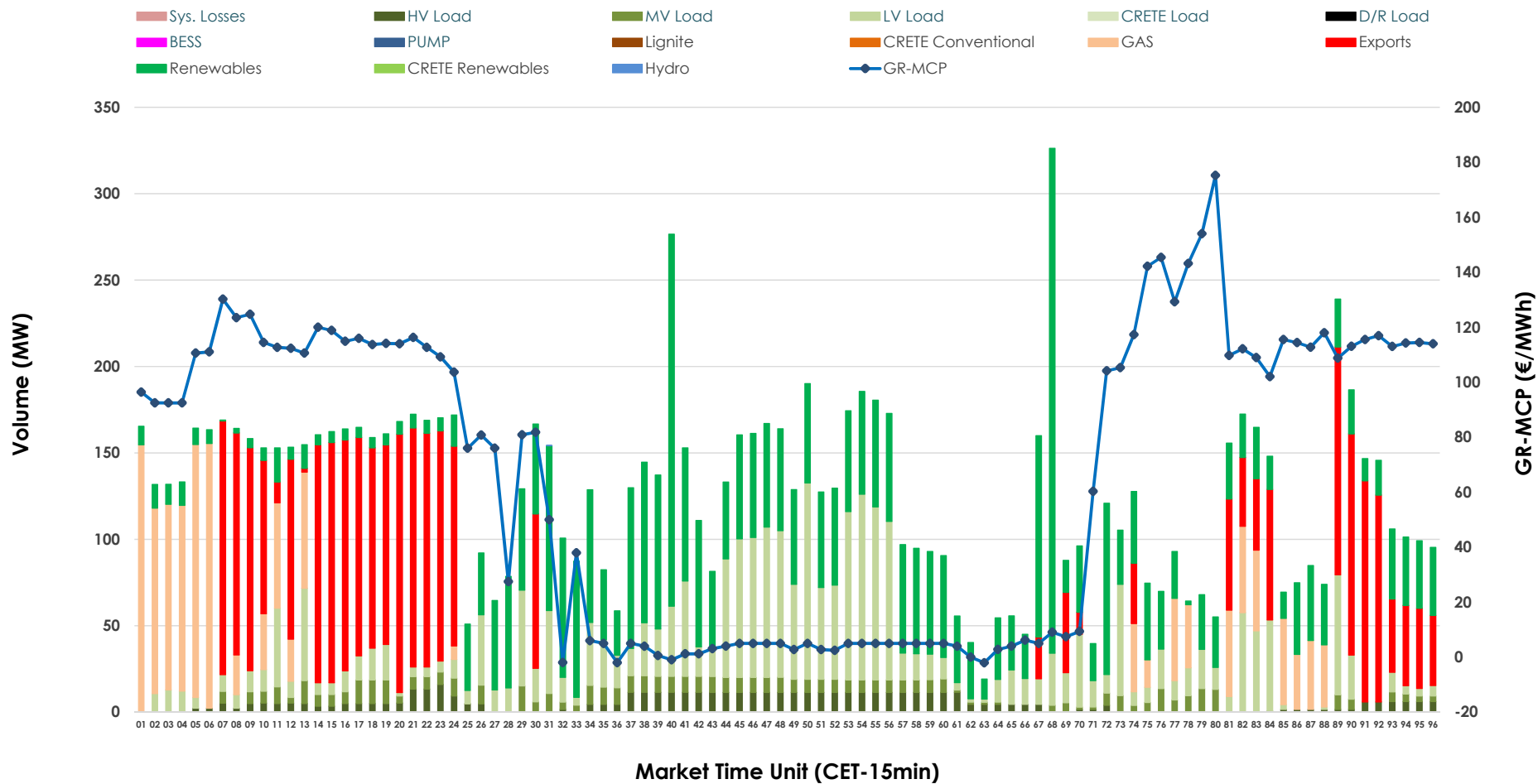


IDA '2' Market Outlook

23.05.2026 IDA '2' Market - Sell



23.05.2026 IDA '2' Market - Buy



GR Bidding Zone Weekly Figures

Delivery Day	17.05	18.05	19.05	20.05	21.05	22.05	23.05
	👇 -12%	👆 36%	👉 29%	👇 -46%	👆 33%	👇 -2%	👇 -26%
Avg.MCP (€/MWh)	72.35	98.59	127.58	69.29	92.33	90.57	66.79
Max.MCP (€/MWh)	155.79	281.79	231.13	203.57	221.99	161.98	175.24
Min.MCP (€/MWh)	-10.01	-8.32	71.02	-9.37	-10.26	-2.17	-2.04
	👉 25%	👆 57%	👇 -11%	👇 -6%	👇 -12%	👇 -6%	👆 44%
Tot.Vol(GWh)	3.90	6.11	5.45	5.14	4.55	4.28	6.16

Trades by Order Type

Delivery Day		17.05	18.05	19.05	20.05	21.05	22.05	23.05	
Ord Price Type		Sell & Buy Trades in (GWh) per Price Type							(%)
PPT	(S)	0.000	0.000	0.000	0.000	0.000	0.000	0.000	0.00%
HBD	(S)	0.900	2.778	1.464	2.483	1.964	1.614	2.467	80.11%
BLK	(S)	0.000	0.000	0.000	0.000	0.000	0.000	0.000	0.00%
CPL	(S)	1.052	0.276	1.261	0.086	0.309	0.527	0.613	19.89%
PPT	(B)	0.000	0.000	0.000	0.000	0.000	0.000	0.000	0.00%
HBD	(B)	1.861	2.994	2.401	1.762	1.744	1.739	2.289	74.31%
BLK	(B)	0.000	0.000	0.000	0.000	0.000	0.000	0.000	0.00%
CPL	(B)	0.091	0.061	0.324	0.807	0.529	0.402	0.791	25.69%
		Sell & Buy Orders Traded per Price Type							(%)
PPT	(S)	0	0	0	0	0	0	0	0.00%
HBD	(S)	353	482	350	332	268	311	226	100.00%
BLK	(S)	0	0	0	0	0	0	0	0.00%
PPT	(B)	0	0	0	0	0	0	0	0.00%
HBD	(B)	647	1212	662	544	413	417	543	100.00%
BLK	(B)	0	0	0	0	0	0	0	0.00%

- MCP** Market Clearing Price (€/MWh)
- PPT** Priority Price-Taking
- HBD** Hybrid
- BLK** Block
- CPL** Market Coupling Flow

Trade's Volume Mix

		Sell - MWh	Buy - MWh	
Lignite	(0.0%)	0	0	(0.0%)
Crete Conv.	(0.0%)	0	0	(0.0%)
Gas	(14.8%)	457	359	(11.7%)
Hydro	(0.6%)	19	0	(0.0%)
Imports	(19.9%)	613		
RES	(62.4%)	1,922	1,017	(33.0%)
Crete RES	(0.0%)	0	0	(0.0%)
BESS	(0.0%)	0	0	(0.0%)
HV Load	(0.0%)	0	128	(4.2%)
MV Load	(0.8%)	26	139	(4.5%)
LV Load	(1.4%)	43	646	(21.0%)
Crete Load	(0.0%)	0	0	(0.0%)
Pumping	(0.0%)	0	0	(0.0%)
Exports			791	(25.7%)
Sys.Losses	(0.0%)	0	0	(0.0%)
D/R Load	(0.0%)	0	0	(0.0%)

