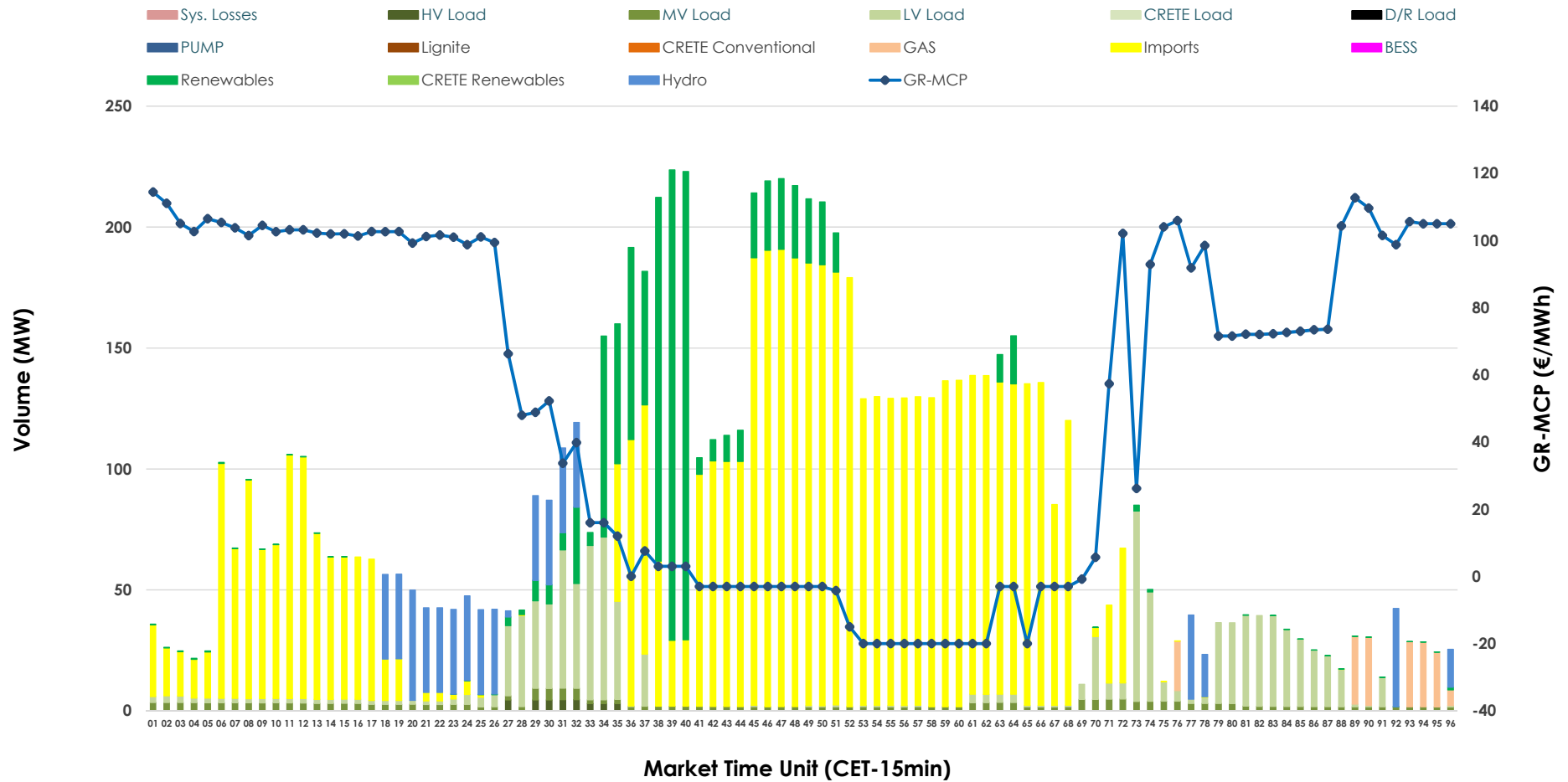


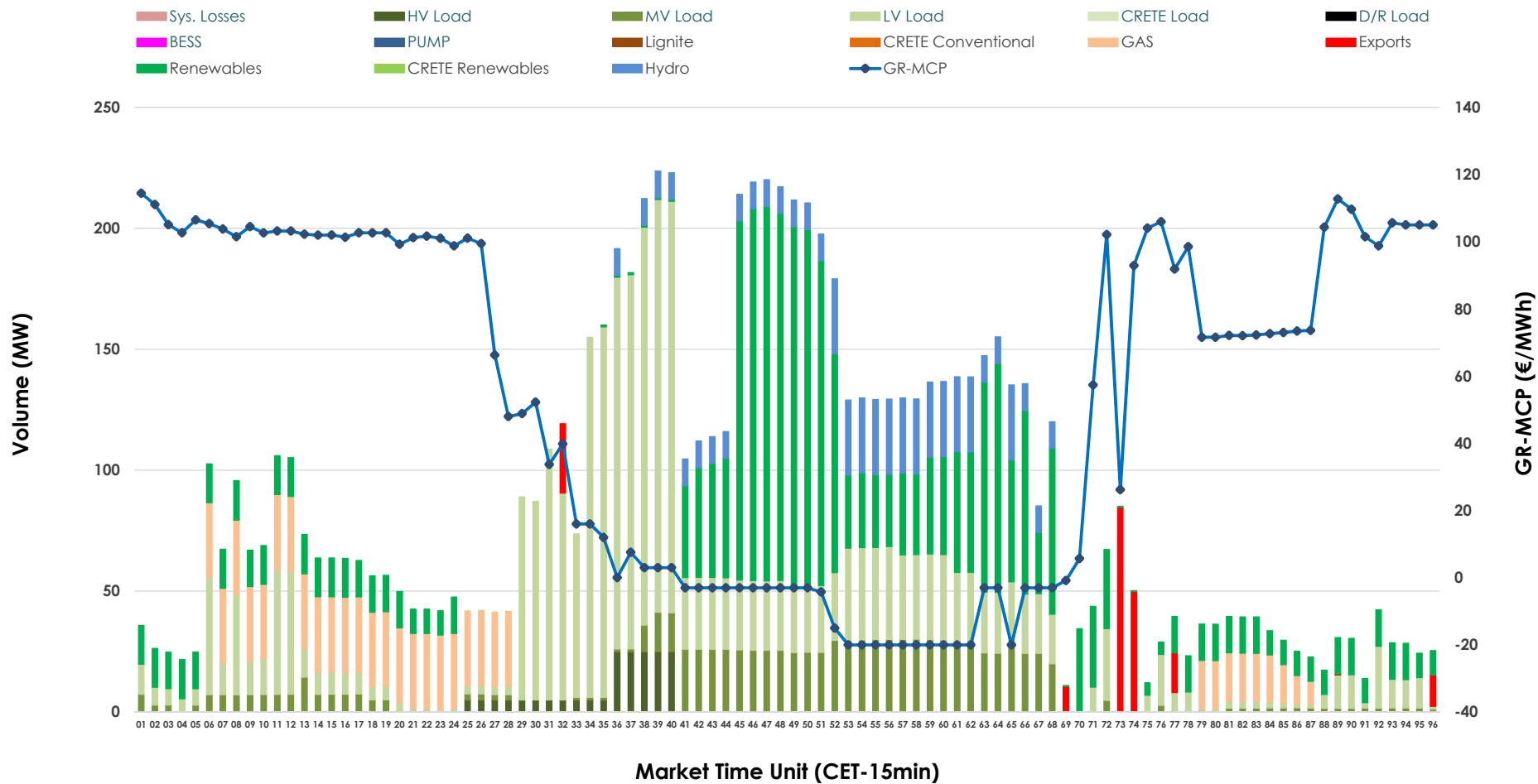


IDA '1' Market Outlook

01.05.2026 IDA '1' Market - Sell



01.05.2026 IDA '1' Market - Buy



GR Bidding Zone Weekly Figures

Delivery Day	25.04	26.04	27.04	28.04	29.04	30.04	01.05
	👇 -30%	👇 -14%	👆 63%	👇 -5%	👆 32%	👇 -14%	👇 -37%
Avg.MCP (€/MWh)	55.00	47.33	77.34	73.58	97.14	83.69	52.40
Max.MCP (€/MWh)	186.00	137.70	218.32	191.45	231.24	223.93	114.42
Min.MCP (€/MWh)	-49.00	-50.00	-12.00	-25.96	-5.00	-12.88	-19.99
	👆 39%	👇 -48%	👆 11%	👇 -16%	👇 -4%	👆 35%	👆 27%
Tot.Vol(GWh)	5.36	2.77	3.08	2.60	2.48	3.36	4.28

Trades by Order Type

Delivery Day		25.04	26.04	27.04	28.04	29.04	30.04	01.05	
Ord Price Type		Sell & Buy Trades in (GWh) per Price Type							(%)
PPT	(S)	0.000	0.000	0.000	0.000	0.000	0.000	0.000	0.00%
HBD	(S)	1.972	0.849	1.230	1.114	1.061	1.345	0.790	36.90%
BLK	(S)	0.000	0.000	0.000	0.000	0.000	0.000	0.000	0.00%
CPL	(S)	0.709	0.535	0.309	0.185	0.181	0.334	1.351	63.10%
PPT	(B)	0.000	0.000	0.000	0.000	0.000	0.000	0.000	0.00%
HBD	(B)	2.511	1.314	1.192	0.953	1.112	1.102	2.090	97.62%
BLK	(B)	0.000	0.000	0.000	0.000	0.000	0.000	0.000	0.00%
CPL	(B)	0.169	0.070	0.347	0.346	0.130	0.577	0.051	2.38%
		Sell & Buy Orders Traded per Price Type							(%)
PPT	(S)	0	0	0	0	0	0	0	0.00%
HBD	(S)	313	288	117	383	305	258	385	100.00%
BLK	(S)	0	0	0	0	0	0	0	0.00%
PPT	(B)	0	0	0	0	0	0	0	0.00%
HBD	(B)	640	648	576	651	630	759	691	100.00%
BLK	(B)	0	0	0	0	0	0	0	0.00%

- MCP** Market Clearing Price (€/MWh)
- PPT** Priority Price-Taking
- HBD** Hybrid
- BLK** Block
- CPL** Market Coupling Flow

Trade's Volume Mix

	Sell - MWh	Buy - MWh	
Lignite (0.0%)	0	0	(0.0%)
Crete Conv. (0.0%)	0	0	(0.0%)
Gas (1.9%)	40	217	(10.2%)
Hydro (6.7%)	144	148	(6.9%)
Imports (63.1%)	1,351		
RES (13.3%)	285	703	(32.9%)
Crete RES (0.0%)	0	0	(0.0%)
BESS (0.0%)	0	0	(0.0%)
HV Load (0.4%)	8	45	(2.1%)
MV Load (2.8%)	60	244	(11.4%)
LV Load (11.8%)	252	732	(34.2%)
Crete Load (0.0%)	0	0	(0.0%)
Pumping (0.0%)	0	0	(0.0%)
Exports		51	(2.4%)
Sys.Losses (0.0%)	0	0	(0.0%)
D/R Load (0.0%)	0	0	(0.0%)

