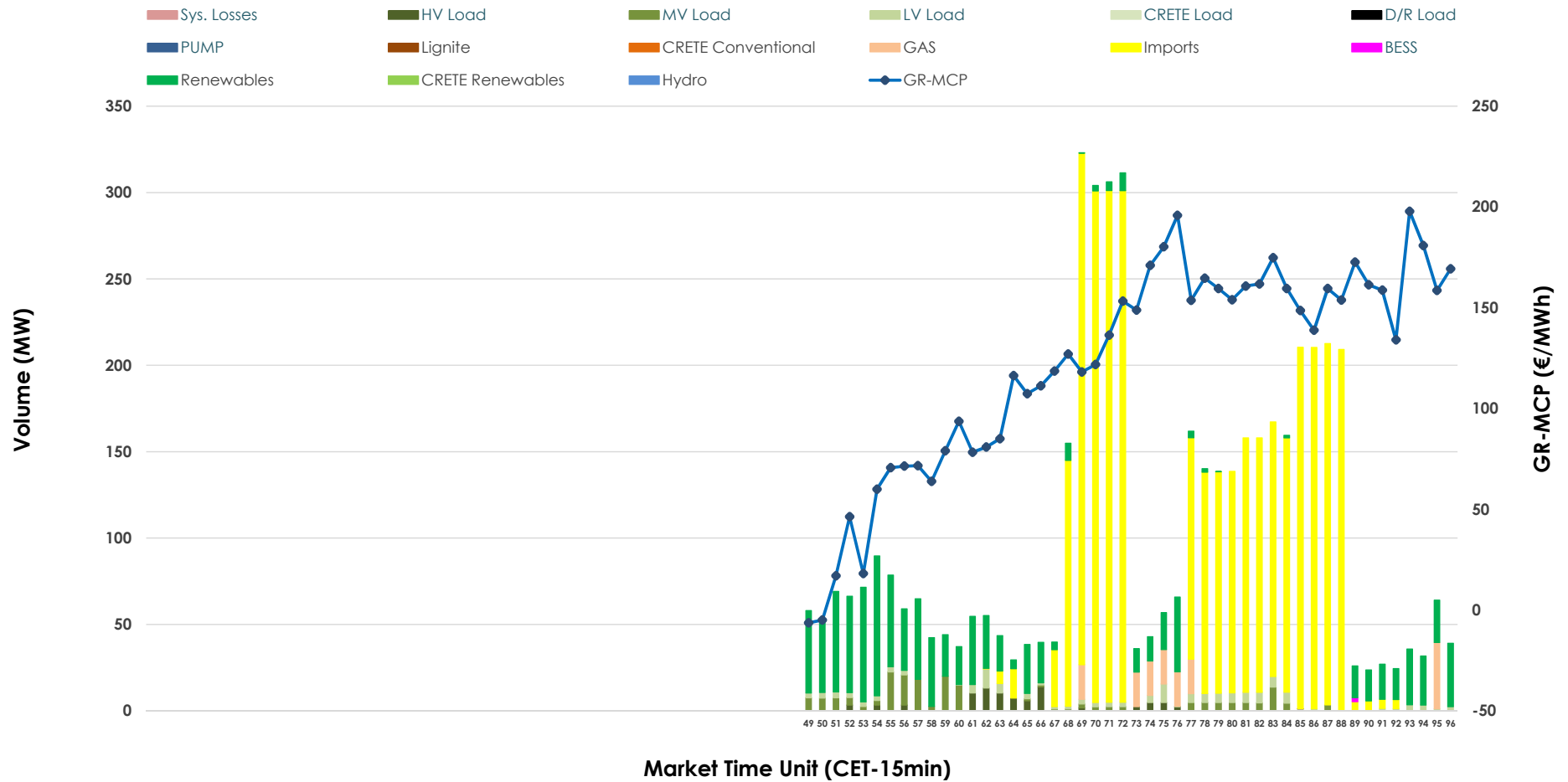


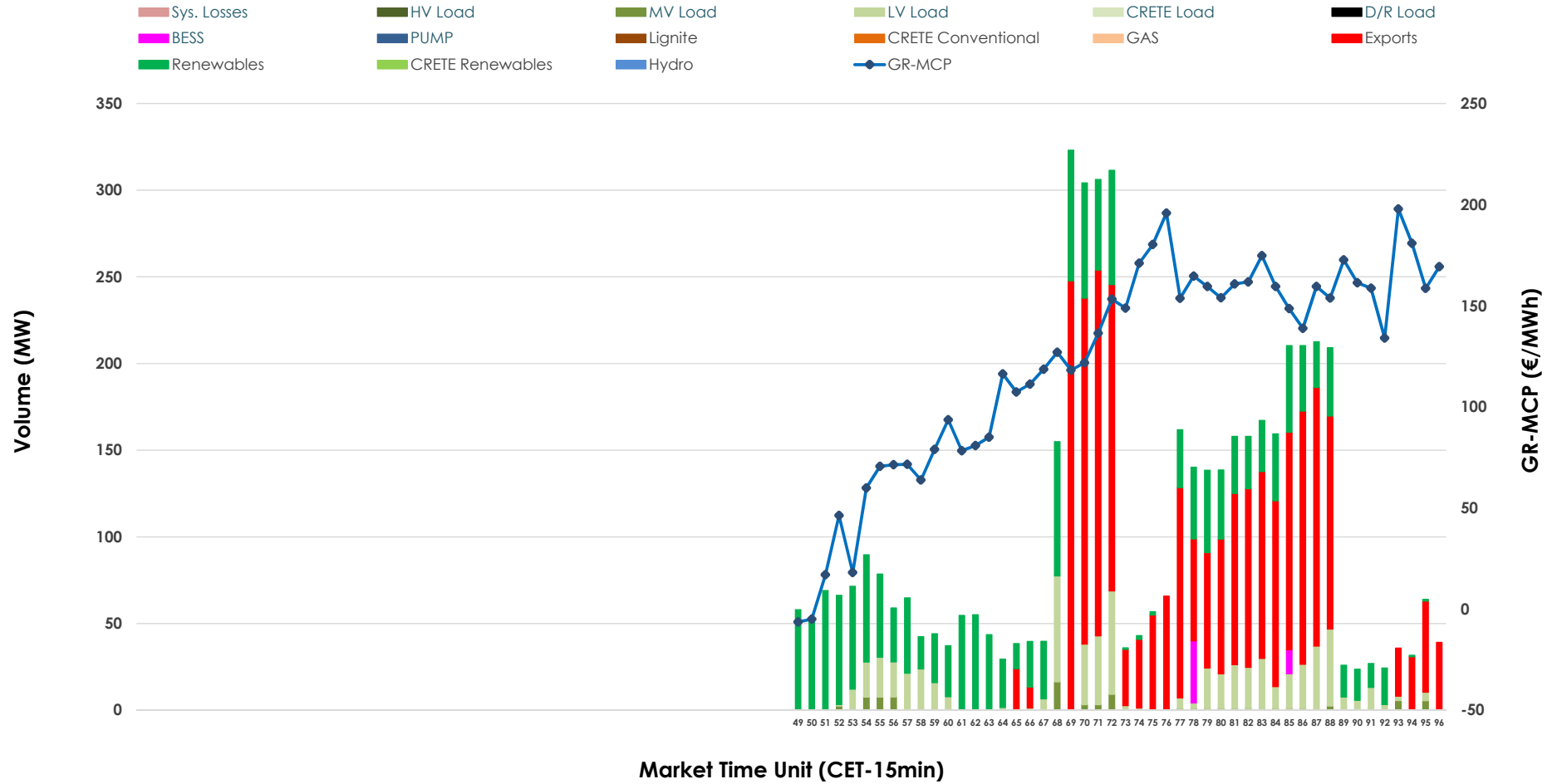


# IDA '3' Market Outlook

10.06.2026 IDA '3' Market - Sell



### 10.06.2026 IDA '3' Market - Buy



### GR Bidding Zone Weekly Figures

Delivery Day	04.06	05.06	06.06	07.06	08.06	09.06	10.06
	↗ 17%	↗ 20%	↘ -44%	↔ 0%	↗ 72%	↔ 1%	↗ 5%
<b>Avg.MCP (€/MWh)</b>	99.36	119.09	66.44	66.65	114.70	115.70	121.94
<b>Max.MCP (€/MWh)</b>	203.24	180.60	150.74	149.92	195.70	203.07	197.81
<b>Min.MCP (€/MWh)</b>	3.05	48.90	-32.00	-11.56	6.55	16.45	-6.35
	↘ -16%	↘ -32%	↗ 97%	↘ -38%	↗ 26%	↗ 40%	↘ -13%
<b>Tot.Vol(GWh)</b>	1.95	1.32	2.60	1.62	2.04	2.85	2.48

### Trades by Order Type

Delivery Day		04.06	05.06	06.06	07.06	08.06	09.06	10.06	
<b>Ord Price Type</b>		<b>Sell &amp; Buy Trades in (GWh) per Price Type</b>							<b>(%)</b>
<b>PPT</b>	(S)	0.000	0.000	0.000	0.000	0.000	0.000	0.000	0.00%
<b>HBD</b>	(S)	0.423	0.378	0.223	0.713	0.529	1.346	0.406	32.69%
<b>BLK</b>	(S)	0.000	0.000	0.000	0.000	0.000	0.000	0.000	0.00%
<b>CPL</b>	(S)	0.552	0.282	1.079	0.097	0.492	0.081	0.836	67.31%
<b>PPT</b>	(B)	0.000	0.000	0.000	0.000	0.000	0.000	0.000	0.00%
<b>HBD</b>	(B)	0.905	0.504	1.301	0.500	1.007	0.618	0.618	49.72%
<b>BLK</b>	(B)	0.000	0.000	0.000	0.000	0.000	0.000	0.000	0.00%
<b>CPL</b>	(B)	0.069	0.156	0.000	0.310	0.014	0.809	0.625	50.28%
		<b>Sell &amp; Buy Orders Traded per Price Type</b>							<b>(%)</b>
<b>PPT</b>	(S)	0	0	0	0	0	0	0	0.00%
<b>HBD</b>	(S)	146	238	58	79	133	237	156	100.00%
<b>BLK</b>	(S)	0	0	0	0	0	0	0	0.00%
<b>PPT</b>	(B)	0	0	0	0	0	0	0	0.00%
<b>HBD</b>	(B)	273	216	273	172	255	274	245	100.00%
<b>BLK</b>	(B)	0	0	0	0	0	0	0	0.00%

- MCP** Market Clearing Price (€/MWh)
- PPT** Priority Price-Taking
- HBD** Hybrid
- BLK** Block
- CPL** Market Coupling Flow

### Trade's Volume Mix

		Sell - MWh	Buy - MWh	
<b>Lignite</b>	(0.0%)	0	0	(0.0%)
<b>Crete Conv.</b>	(0.0%)	0	0	(0.0%)
<b>Gas</b>	(3.2%)	40	0	(0.0%)
<b>Hydro</b>	(0.0%)	0	0	(0.0%)
<b>Imports</b>	(67.3%)	836		
<b>RES</b>	(21.0%)	261	419	(33.7%)
<b>Crete RES</b>	(0.0%)	0	0	(0.0%)
<b>BESS</b>	(0.0%)	1	12	(1.0%)
<b>HV Load</b>	(1.7%)	22	0	(0.0%)
<b>MV Load</b>	(3.9%)	48	20	(1.6%)
<b>LV Load</b>	(2.8%)	35	166	(13.4%)
<b>Crete Load</b>	(0.0%)	0	0	(0.0%)
<b>Pumping</b>	(0.0%)	0	0	(0.0%)
<b>Exports</b>			625	(50.3%)
<b>Sys.Losses</b>	(0.0%)	0	0	(0.0%)
<b>D/R Load</b>	(0.0%)	0	0	(0.0%)

