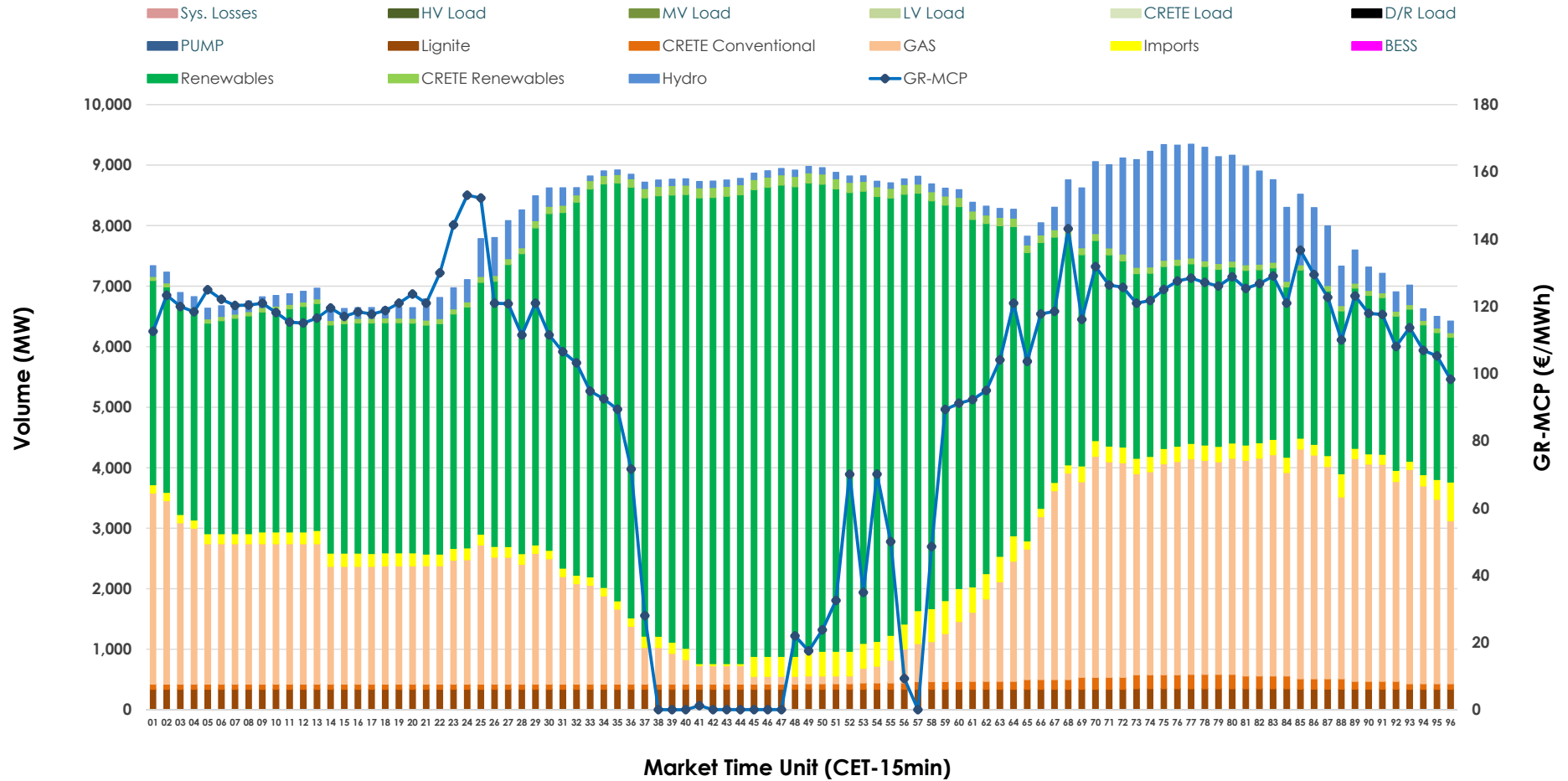


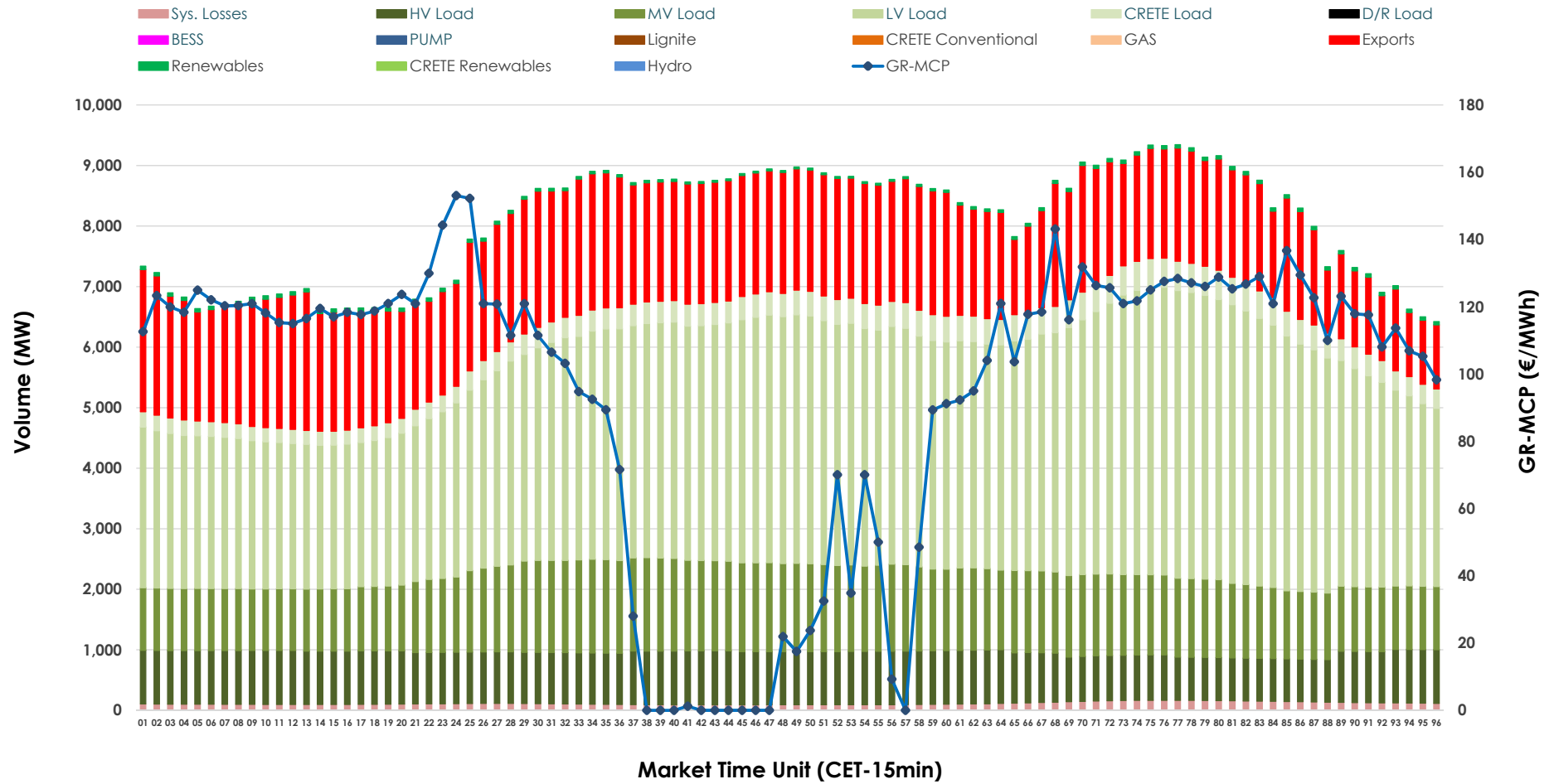


# Day-Ahead Market Outlook

27.03.2026 Day-Ahead Market - Sell



### 27.03.2026 Day-Ahead Market - Buy



### GR Bidding Zone Weekly Figures

Delivery Day	21.03	22.03	23.03	24.03	25.03	26.03	27.03
	👇 -14%	👇 -12%	👆 74%	👇 -26%	👇 -28%	👆 6%	👆 14%
<b>Avg.MCP (€/MWh)</b>	96.67	84.78	147.74	109.02	78.87	83.46	94.87
<b>Max.MCP (€/MWh)</b>	176.61	192.93	281.69	198.53	205.42	175.68	153.06
<b>Min.MCP (€/MWh)</b>	0.00	0.00	63.72	8.47	0.00	0.00	0.01
	👇 -2%	👇 -9%	👆 9%	👇 -1%	👇 -3%	👇 -3%	👆 6%
<b>Tot.Vol(GWh)</b>	396.49	362.14	394.91	389.09	376.78	367.18	387.51

### Trades by Order Type

Delivery Day		21.03	22.03	23.03	24.03	25.03	26.03	27.03	
<b>Ord Price Type</b>		<b>Sell &amp; Buy Trades in (GWh) per Price Type</b>							<b>(%)</b>
<b>PPT</b>	(S)	90.130	82.949	77.542	83.245	80.498	67.792	78.719	40.63%
<b>HBD</b>	(S)	79.261	67.215	71.298	76.867	77.174	75.969	84.049	43.38%
<b>BLK</b>	(S)	28.856	30.904	46.688	30.410	29.791	31.782	28.633	14.78%
<b>CPL</b>	(S)	0.000	0.000	1.928	4.021	0.928	8.049	2.353	1.21%
<b>PPT</b>	(B)	14.027	13.092	14.391	14.986	13.576	13.255	15.198	7.84%
<b>HBD</b>	(B)	145.947	132.444	147.269	153.909	136.888	146.733	148.574	76.68%
<b>BLK</b>	(B)	0.000	0.000	0.000	0.000	0.000	0.000	0.000	0.00%
<b>CPL</b>	(B)	38.273	35.532	35.796	25.648	37.926	23.605	29.982	15.47%
		<b>Sell &amp; Buy Orders Traded per Price Type</b>							<b>(%)</b>
<b>PPT</b>	(S)	1902	1902	1886	1849	1726	1755	1770	37.33%
<b>HBD</b>	(S)	2881	2817	3216	3103	2699	2787	2960	62.43%
<b>BLK</b>	(S)	16	18	25	10	11	11	11	0.23%
<b>PPT</b>	(B)	2232	2217	2231	2234	2270	2270	2269	35.21%
<b>HBD</b>	(B)	4095	4167	4048	4147	4359	4150	4176	64.79%
<b>BLK</b>	(B)	0	0	0	0	0	0	0	0.00%

- MCP** Market Clearing Price (€/MWh)
- PPT** Priority Price-Taking
- HBD** Hybrid
- BLK** Block
- CPL** Market Coupling Flow

### Trade's Volume Mix

		Sell - MWh	Buy - MWh	
<b>Lignite</b>	(4.2%)	8,191	0	(0.0%)
<b>Crete Conv.</b>	(1.5%)	2,876	0	(0.0%)
<b>Gas</b>	(25.6%)	49,649	0	(0.0%)
<b>Hydro</b>	(5.9%)	11,345	0	(0.0%)
<b>Imports</b>	(3.0%)	5,806		
<b>RES</b>	(58.4%)	113,187	1,132	(0.6%)
<b>Crete RES</b>	(1.4%)	2,700	0	(0.0%)
<b>BESS</b>	(0.0%)	0	0	(0.0%)
<b>HV Load</b>	(0.0%)	0	20,177	(10.4%)
<b>MV Load</b>	(0.0%)	0	30,686	(15.8%)
<b>LV Load</b>	(0.0%)	0	85,575	(44.2%)
<b>Crete Load</b>	(0.0%)	0	8,656	(4.5%)
<b>Pumping</b>	(0.0%)	0	0	(0.0%)
<b>Exports</b>			44,763	(23.1%)
<b>Sys.Losses</b>	(0.0%)	0	2,765	(1.4%)
<b>D/R Load</b>	(0.0%)	0	0	(0.0%)

