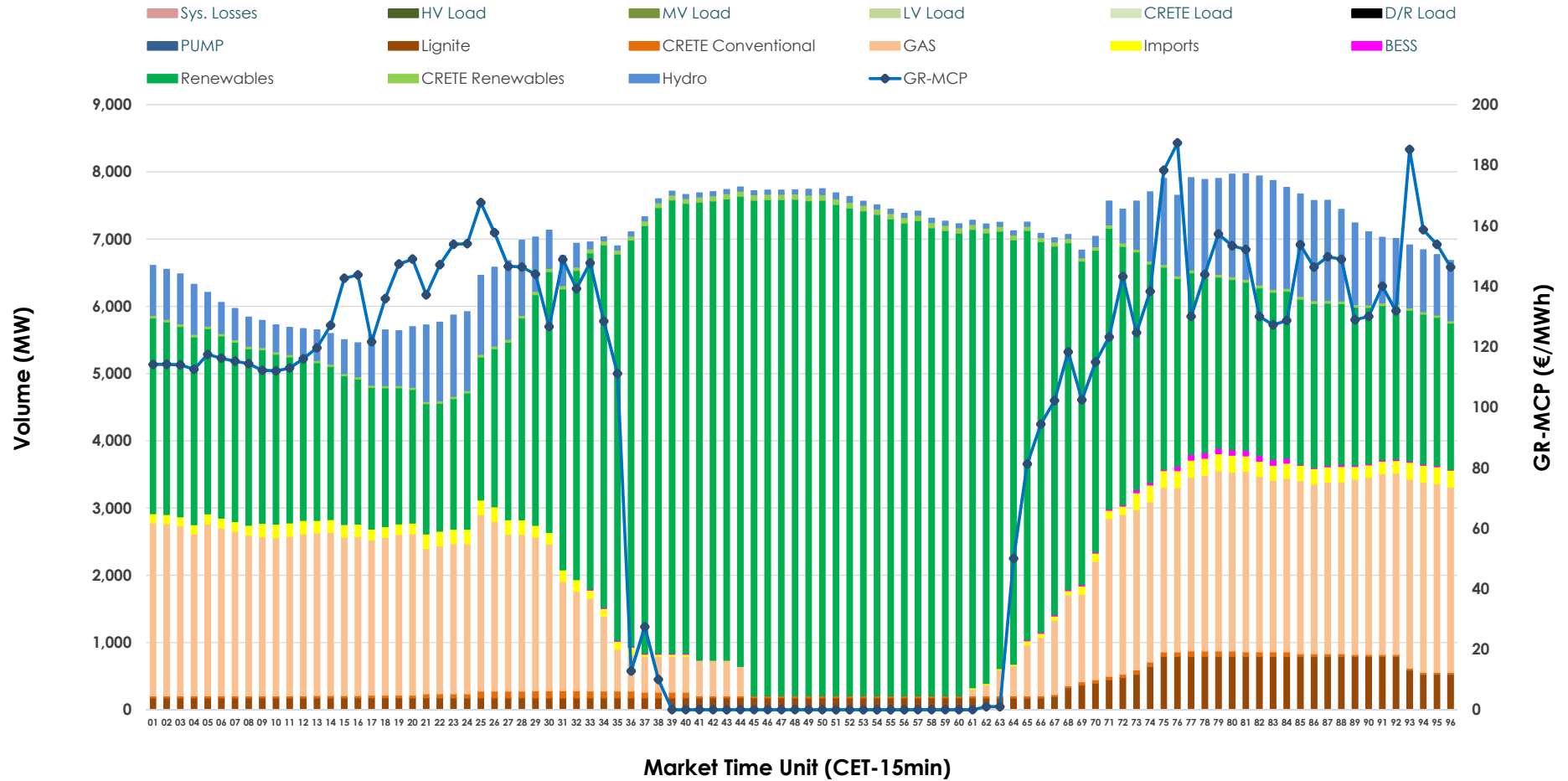


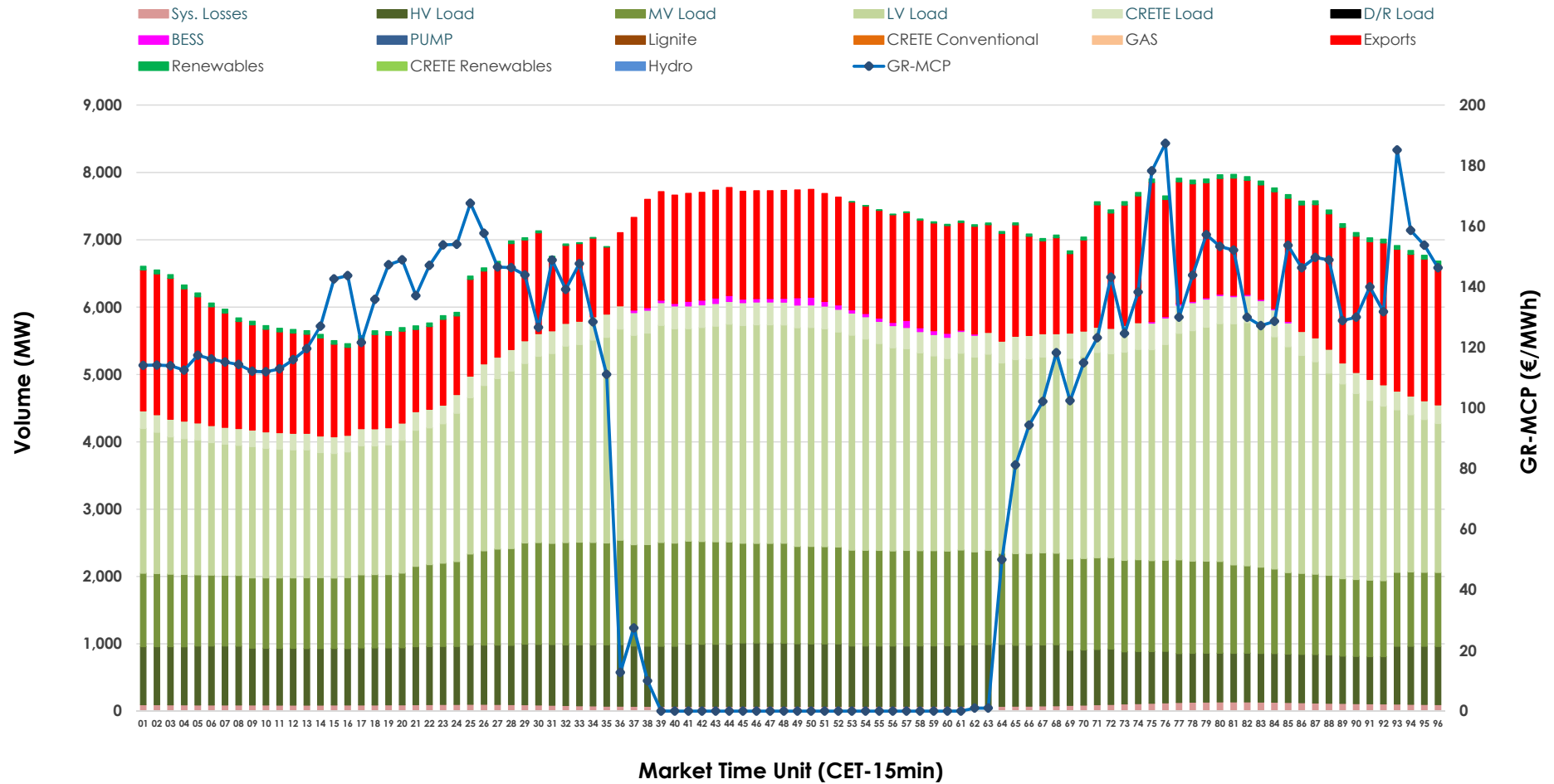


Day-Ahead Market Outlook

13.05.2026 Day-Ahead Market - Sell



13.05.2026 Day-Ahead Market - Buy



GR Bidding Zone Weekly Figures

Delivery Day	07.05	08.05	09.05	10.05	11.05	12.05	13.05
	↗ 17%	↗ 1%	↘ -11%	↘ -16%	↗ 6%	↘ -19%	↗ 20%
Avg.MCP (€/MWh)	120.39	122.10	109.01	91.94	97.12	78.99	95.00
Max.MCP (€/MWh)	176.89	180.08	220.88	208.60	191.00	196.70	187.34
Min.MCP (€/MWh)	11.00	54.19	0.00	-0.02	0.00	-0.10	0.00
	➔ 1%	↗ 3%	↗ 1%	↘ -9%	↗ 12%	↗ 7%	↘ -2%
Tot.Vol(GWh)	298.95	307.30	311.59	283.97	317.58	340.95	335.77

Trades by Order Type

Delivery Day		07.05	08.05	09.05	10.05	11.05	12.05	13.05	
Ord Price Type		Sell & Buy Trades in (GWh) per Price Type							(%)
PPT	(S)	54.293	56.340	59.265	60.371	67.164	77.219	70.214	41.82%
HBD	(S)	60.788	61.406	71.643	57.624	69.769	74.127	78.723	46.89%
BLK	(S)	34.136	30.821	24.868	23.989	21.856	19.129	18.946	11.29%
CPL	(S)	0.258	5.083	0.022	0.000	0.000	0.000	0.000	0.00%
PPT	(B)	15.121	15.159	15.045	14.673	14.748	15.151	15.355	9.15%
HBD	(B)	122.238	124.069	119.139	108.171	122.215	129.213	128.880	76.77%
BLK	(B)	0.000	0.000	0.000	0.000	0.000	0.000	0.000	0.00%
CPL	(B)	12.116	14.422	21.613	19.138	21.826	26.110	23.648	14.09%
		Sell & Buy Orders Traded per Price Type							(%)
PPT	(S)	1689	1702	1708	1716	1762	1764	1686	33.24%
HBD	(S)	3600	3461	3499	3114	3213	2989	3378	66.60%
BLK	(S)	13	10	10	9	6	6	8	0.16%
PPT	(B)	2324	2316	2392	2360	2322	2327	2367	36.94%
HBD	(B)	4001	4025	4063	3578	3881	4077	4041	63.06%
BLK	(B)	0	0	0	0	0	0	0	0.00%

MCP Market Clearing Price (€/MWh)
PPT Priority Price-Taking
HBD Hybrid
BLK Block
CPL Market Coupling Flow

Trade's Volume Mix

	Sell - MWh	Buy - MWh	
Lignite (4.7%)	7,878	0	(0.0%)
Crete Conv. (0.7%)	1,197	0	(0.0%)
Gas (23.5%)	39,510	0	(0.0%)
Hydro (8.4%)	14,104	0	(0.0%)
Imports (1.9%)	3,214		
RES (59.8%)	100,350	833	(0.5%)
Crete RES (0.8%)	1,294	0	(0.0%)
BESS (0.2%)	335	439	(0.3%)
HV Load (0.0%)	0	20,444	(12.2%)
MV Load (0.0%)	0	31,361	(18.7%)
LV Load (0.0%)	0	66,151	(39.4%)
Crete Load (0.0%)	0	7,740	(4.6%)
Pumping (0.0%)	0	0	(0.0%)
Exports		38,696	(23.0%)
Sys.Losses (0.0%)	0	2,218	(1.3%)
D/R Load (0.0%)	0	0	(0.0%)

