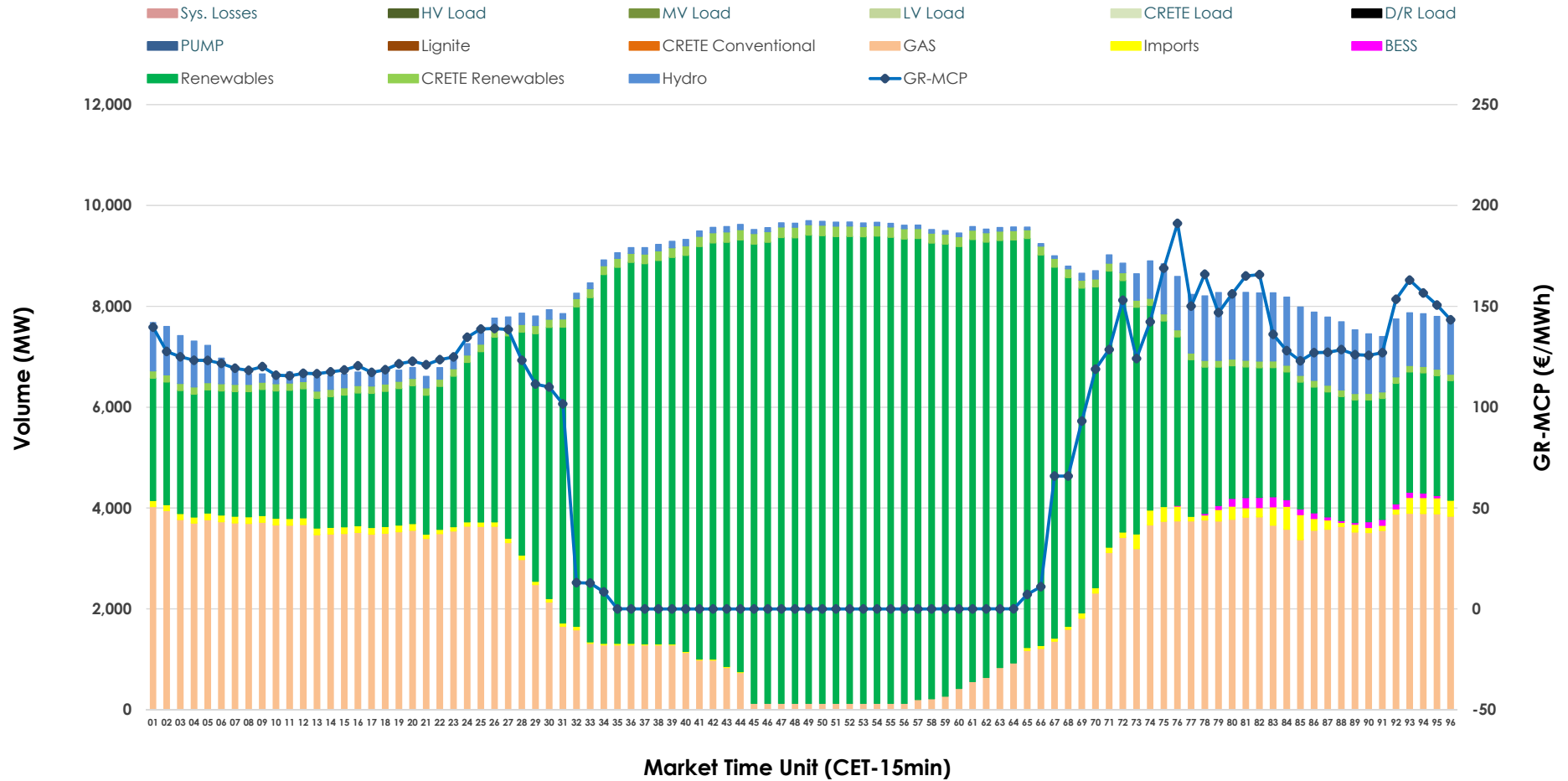




Day-Ahead Market Outlook

22.06.2026 Day-Ahead Market - Sell



GR Bidding Zone Weekly Figures

Delivery Day	16.06	17.06	18.06	19.06	20.06	21.06	22.06
	↗ 16%	↗ 18%	↘ -36%	↔ 0%	↘ -10%	↘ -1%	↗ 21%
Avg.MCP (€/MWh)	100.92	119.31	76.83	76.84	69.40	68.43	82.87
Max.MCP (€/MWh)	172.17	185.46	170.45	150.05	143.77	145.91	191.08
Min.MCP (€/MWh)	15.33	36.53	-0.01	-0.01	-0.02	-1.00	-0.01
	↗ 2%	↔ 0%	↗ 15%	↔ 1%	↘ -5%	↘ -3%	↗ 10%
Tot.Vol(GWh)	339.97	340.24	391.22	394.14	373.56	360.69	398.29

Trades by Order Type

Delivery Day		16.06	17.06	18.06	19.06	20.06	21.06	22.06	
Ord Price Type		Sell & Buy Trades in (GWh) per Price Type							(%)
PPT	(S)	55.273	57.588	76.033	82.897	83.379	83.637	81.817	41.08%
HBD	(S)	71.874	69.566	86.738	84.108	75.272	67.229	87.242	43.81%
BLK	(S)	33.076	33.077	32.840	30.010	28.129	29.177	29.167	14.65%
CPL	(S)	9.764	9.890	0.000	0.053	0.000	0.303	0.919	0.46%
PPT	(B)	16.485	16.785	16.742	17.703	17.500	16.256	17.878	8.98%
HBD	(B)	146.696	146.808	152.368	152.606	141.182	132.687	155.517	78.09%
BLK	(B)	0.000	0.000	0.000	0.000	0.000	0.000	0.000	0.00%
CPL	(B)	6.806	6.527	26.501	26.758	28.098	31.403	25.750	12.93%
		Sell & Buy Orders Traded per Price Type							(%)
PPT	(S)	1584	1618	1634	1607	1669	1654	1652	33.98%
HBD	(S)	3701	3804	3357	3327	3083	2836	3199	65.81%
BLK	(S)	14	10	11	14	15	14	10	0.21%
PPT	(B)	2347	2351	2371	2411	2407	2448	2443	37.84%
HBD	(B)	3818	3769	3993	4043	4044	3852	4013	62.16%
BLK	(B)	0	0	0	0	0	0	0	0.00%

- MCP** Market Clearing Price (€/MWh)
- PPT** Priority Price-Taking
- HBD** Hybrid
- BLK** Block
- CPL** Market Coupling Flow

Trade's Volume Mix

	Sell - MWh	Buy - MWh	
Lignite (0.0%)	0	0	(0.0%)
Crete Conv. (0.0%)	0	0	(0.0%)
Gas (29.2%)	58,090	0	(0.0%)
Hydro (5.3%)	10,603	0	(0.0%)
Imports (1.3%)	2,569		
RES (62.0%)	123,513	765	(0.4%)
Crete RES (2.0%)	3,884	0	(0.0%)
BESS (0.2%)	486	556	(0.3%)
HV Load (0.0%)	0	18,754	(9.4%)
MV Load (0.0%)	0	35,864	(18.0%)
LV Load (0.0%)	0	90,351	(45.4%)
Crete Load (0.0%)	0	9,768	(4.9%)
Pumping (0.0%)	0	0	(0.0%)
Exports		40,449	(20.3%)
Sys.Losses (0.0%)	0	2,639	(1.3%)
D/R Load (0.0%)	0	0	(0.0%)

