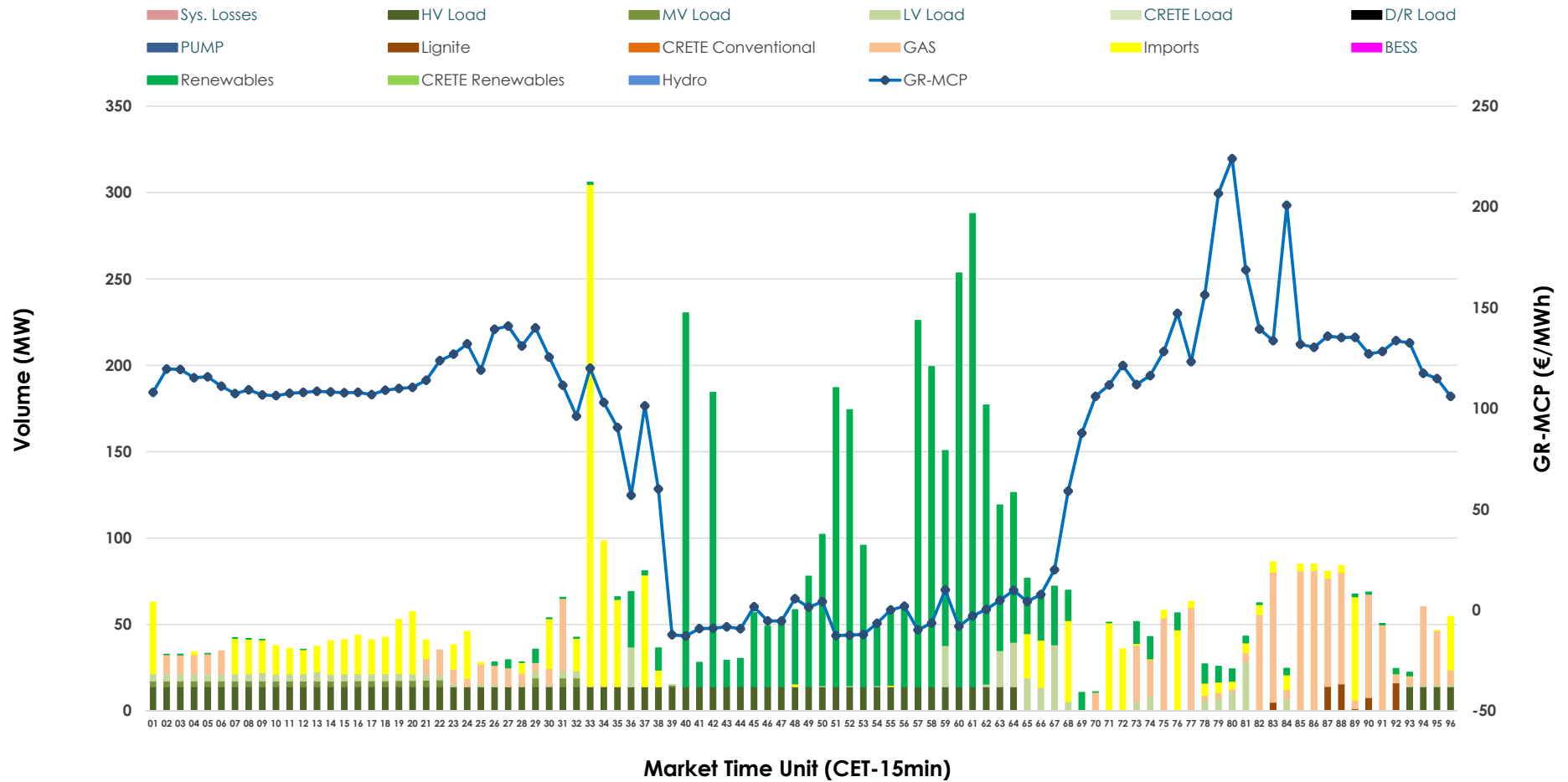


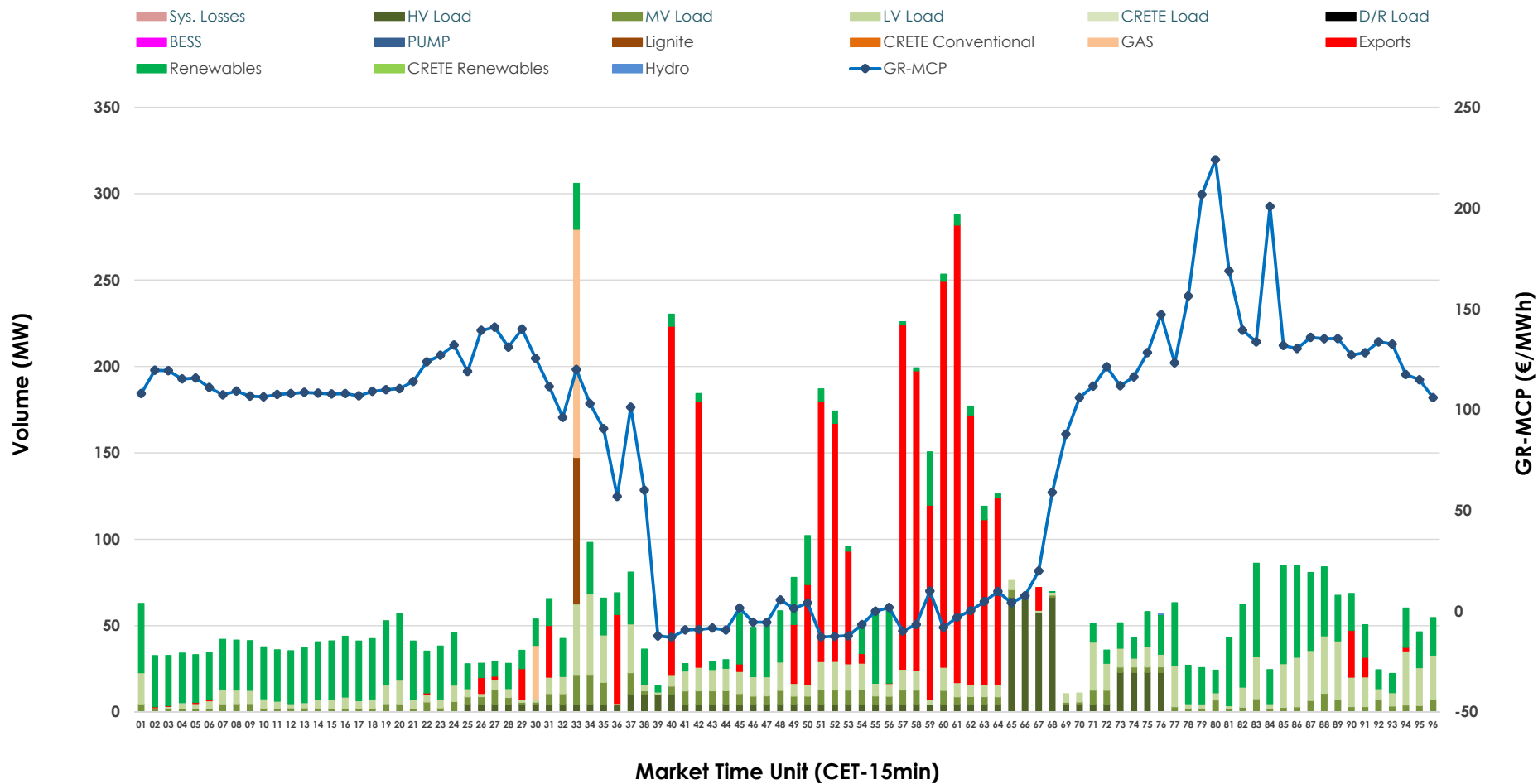


# IDA '1' Market Outlook

30.04.2026 IDA '1' Market - Sell



### 30.04.2026 IDA '1' Market - Buy



### GR Bidding Zone Weekly Figures

Delivery Day	24.04	25.04	26.04	27.04	28.04	29.04	30.04
	↑ 47%	↓ -30%	↓ -14%	↑ 63%	↓ -5%	↑ 32%	↓ -14%
<b>Avg.MCP (€/MWh)</b>	78.96	55.00	47.33	77.34	73.58	97.14	83.69
<b>Max.MCP (€/MWh)</b>	230.91	186.00	137.70	218.32	191.45	231.24	223.93
<b>Min.MCP (€/MWh)</b>	-16.96	-49.00	-50.00	-12.00	-25.96	-5.00	-12.88
	↓ -56%	↑ 39%	↓ -48%	↑ 11%	↓ -16%	↓ -4%	↑ 35%
<b>Tot.Vol(GWh)</b>	3.84	5.36	2.77	3.08	2.60	2.48	3.36

### Trades by Order Type

Delivery Day		24.04	25.04	26.04	27.04	28.04	29.04	30.04	
Ord Price Type		Sell & Buy Trades in (GWh) per Price Type							(%)
<b>PPT</b>	(S)	0.000	0.000	0.000	0.000	0.000	0.000	0.000	0.00%
<b>HBD</b>	(S)	1.594	1.972	0.849	1.230	1.114	1.061	1.345	80.12%
<b>BLK</b>	(S)	0.000	0.000	0.000	0.000	0.000	0.000	0.000	0.00%
<b>CPL</b>	(S)	0.327	0.709	0.535	0.309	0.185	0.181	0.334	19.88%
<b>PPT</b>	(B)	0.000	0.000	0.000	0.000	0.000	0.000	0.000	0.00%
<b>HBD</b>	(B)	1.801	2.511	1.314	1.192	0.953	1.112	1.102	65.61%
<b>BLK</b>	(B)	0.000	0.000	0.000	0.000	0.000	0.000	0.000	0.00%
<b>CPL</b>	(B)	0.120	0.169	0.070	0.347	0.346	0.130	0.577	34.39%
		Sell & Buy Orders Traded per Price Type							(%)
<b>PPT</b>	(S)	0	0	0	0	0	0	0	0.00%
<b>HBD</b>	(S)	294	313	288	117	383	305	258	100.00%
<b>BLK</b>	(S)	0	0	0	0	0	0	0	0.00%
<b>PPT</b>	(B)	0	0	0	0	0	0	0	0.00%
<b>HBD</b>	(B)	716	640	648	576	651	630	759	100.00%
<b>BLK</b>	(B)	0	0	0	0	0	0	0	0.00%

- MCP** Market Clearing Price (€/MWh)
- PPT** Priority Price-Taking
- HBD** Hybrid
- BLK** Block
- CPL** Market Coupling Flow

### Trade's Volume Mix

	Sell - MWh	Buy - MWh	
<b>Lignite</b> (0.9%)	15	21	(1.3%)
<b>Crete Conv.</b> (0.0%)	0	0	(0.0%)
<b>Gas</b> (15.1%)	254	41	(2.4%)
<b>Hydro</b> (0.0%)	0	0	(0.0%)
<b>Imports</b> (19.9%)	334		
<b>RES</b> (43.2%)	725	519	(30.9%)
<b>Crete RES</b> (0.0%)	0	0	(0.0%)
<b>BESS</b> (0.0%)	0	0	(0.0%)
<b>HV Load</b> (14.2%)	238	143	(8.5%)
<b>MV Load</b> (1.4%)	23	114	(6.8%)
<b>LV Load</b> (5.4%)	91	264	(15.7%)
<b>Crete Load</b> (0.0%)	0	0	(0.0%)
<b>Pumping</b> (0.0%)	0	0	(0.0%)
<b>Exports</b>		577	(34.4%)
<b>Sys.Losses</b> (0.0%)	0	0	(0.0%)
<b>D/R Load</b> (0.0%)	0	0	(0.0%)

