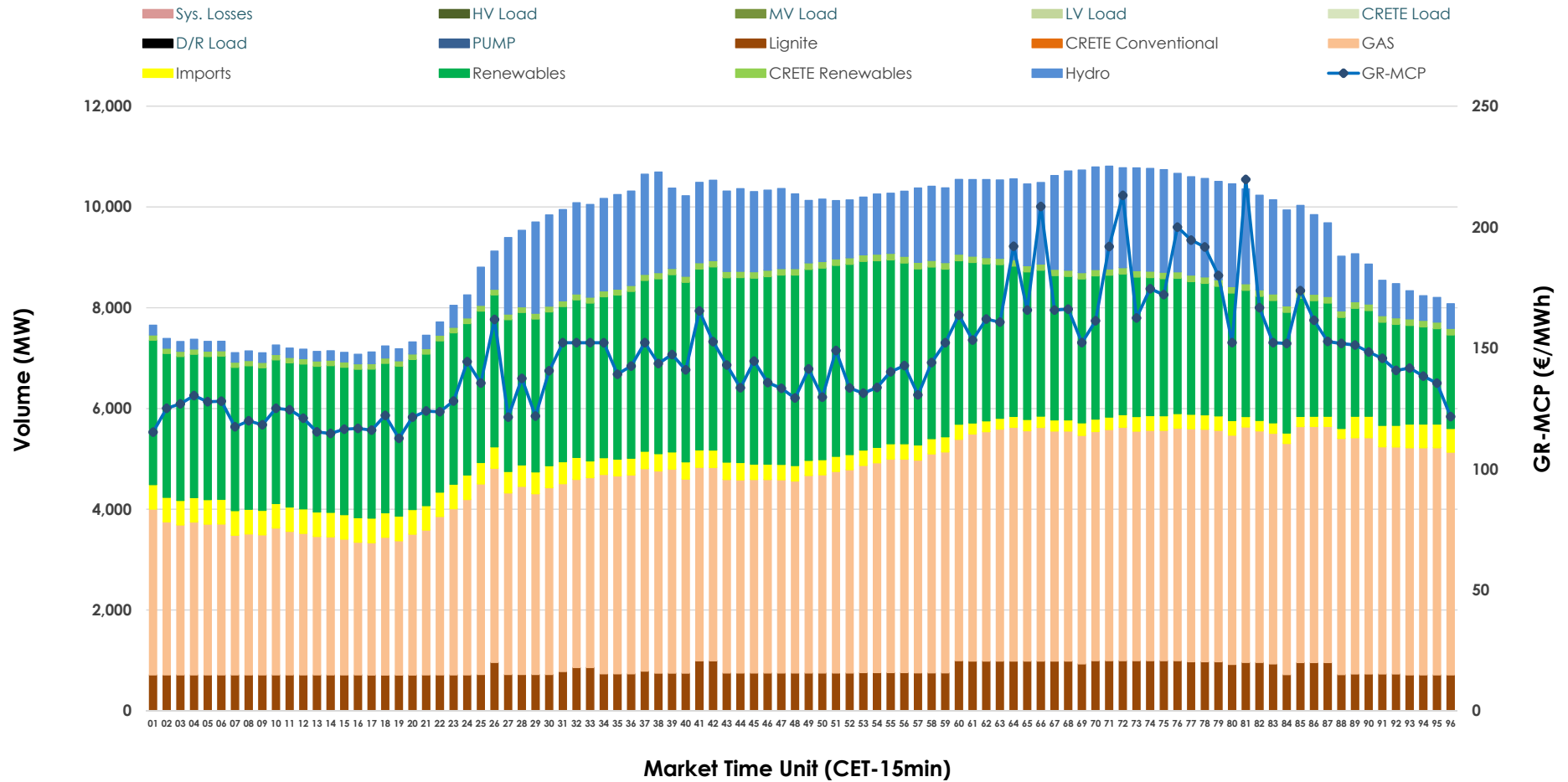


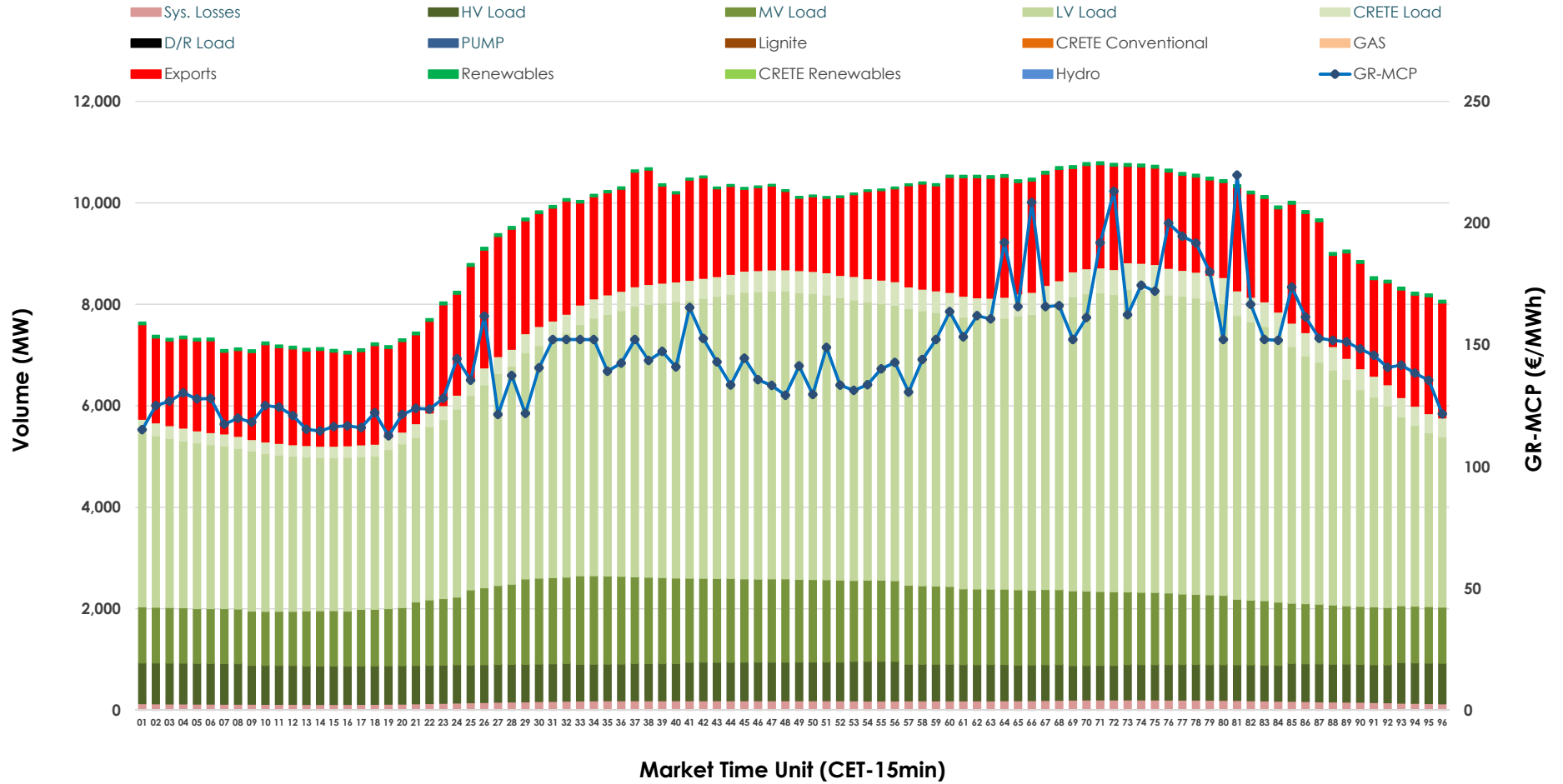


Day-Ahead Market Outlook

21.01.2026 Day-Ahead Market - Sell



21.01.2026 Day-Ahead Market - Buy



GR Bidding Zone Weekly Figures

Delivery Day	15.01	16.01	17.01	18.01	19.01	20.01	21.01
	➔ 1%	⬇️ -5%	⬇️ -24%	➔ 0%	➔ 13%	➔ 2%	➔ 30%
Avg.MCP (€/MWh)	133.24	126.58	96.63	96.80	109.79	112.19	146.16
Max.MCP (€/MWh)	292.62	207.32	145.50	161.30	179.33	168.88	219.71
Min.MCP (€/MWh)	64.77	75.00	75.87	76.30	85.27	83.22	112.66
	⬇️ -2%	⬇️ -5%	➔ 3%	⬇️ -3%	➔ 14%	➔ 1%	⬇️ -4%
Tot.Vol(GWh)	429.85	408.72	421.63	409.46	467.60	470.26	450.65

Trades by Order Type

Delivery Day		15.01	16.01	17.01	18.01	19.01	20.01	21.01	
Ord Price Type		Sell & Buy Trades in (GWh) per Price Type							(%)
PPT	(S)	66.258	64.295	84.263	93.026	88.536	85.075	74.579	33.10%
HBD	(S)	75.381	69.338	77.931	77.276	91.996	91.571	85.064	37.75%
BLK	(S)	71.196	67.165	48.620	34.426	52.894	57.008	65.547	29.09%
CPL	(S)	2.091	3.563	0.000	0.000	0.375	1.476	0.135	0.06%
PPT	(B)	16.397	15.923	14.574	14.643	17.944	17.500	17.485	7.76%
HBD	(B)	161.620	156.175	154.660	150.739	176.493	179.976	176.297	78.24%
BLK	(B)	0.000	0.000	0.000	0.000	0.000	0.000	0.000	0.00%
CPL	(B)	36.909	32.263	41.579	39.346	39.363	37.654	31.542	14.00%
		Sell & Buy Orders Traded per Price Type							(%)
PPT	(S)	2180	2164	2046	2185	2109	2069	2039	38.33%
HBD	(S)	2973	2962	2727	2718	2693	2977	3262	61.33%
BLK	(S)	21	22	21	14	17	19	18	0.34%
PPT	(B)	2301	2283	2274	2404	2357	2350	2276	35.75%
HBD	(B)	4109	4065	4057	4111	4190	4177	4090	64.25%
BLK	(B)	0	0	0	0	0	0	0	0.00%

- MCP** Market Clearing Price (€/MWh)
- PPT** Priority Price-Taking
- HBD** Hybrid
- BLK** Block
- CPL** Market Coupling Flow

Trade's Volume Mix

		Sell - MWh	Buy - MWh	
Lignite	(8.6%)	19,435	0	(0.0%)
Crete Conv.	(0.0%)	0	0	(0.0%)
Gas	(41.8%)	94,218	0	(0.0%)
Hydro	(12.8%)	28,948	0	(0.0%)
Imports	(3.8%)	8,593		
RES	(31.6%)	71,226	1,197	(0.5%)
Crete RES	(1.3%)	2,905	0	(0.0%)
HV Load	(0.0%)	0	17,851	(7.9%)
MV Load	(0.0%)	0	33,421	(14.8%)
LV Load	(0.0%)	0	112,554	(50.0%)
Crete Load	(0.0%)	0	9,257	(4.1%)
Pumping	(0.0%)	0	0	(0.0%)
Exports			47,041	(20.9%)
Sys.Losses	(0.0%)	0	4,003	(1.8%)
D/R Load	(0.0%)	0	0	(0.0%)

