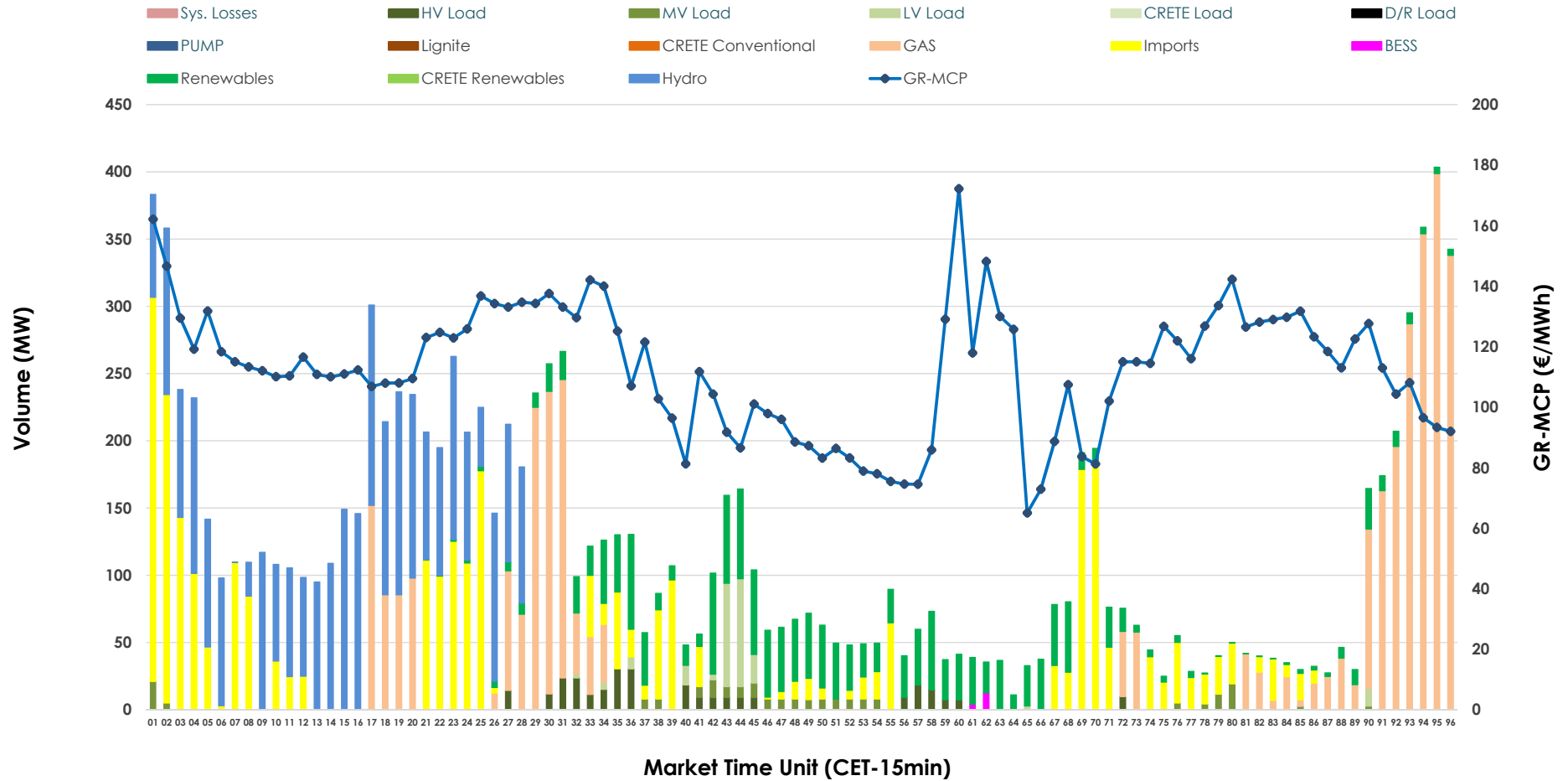


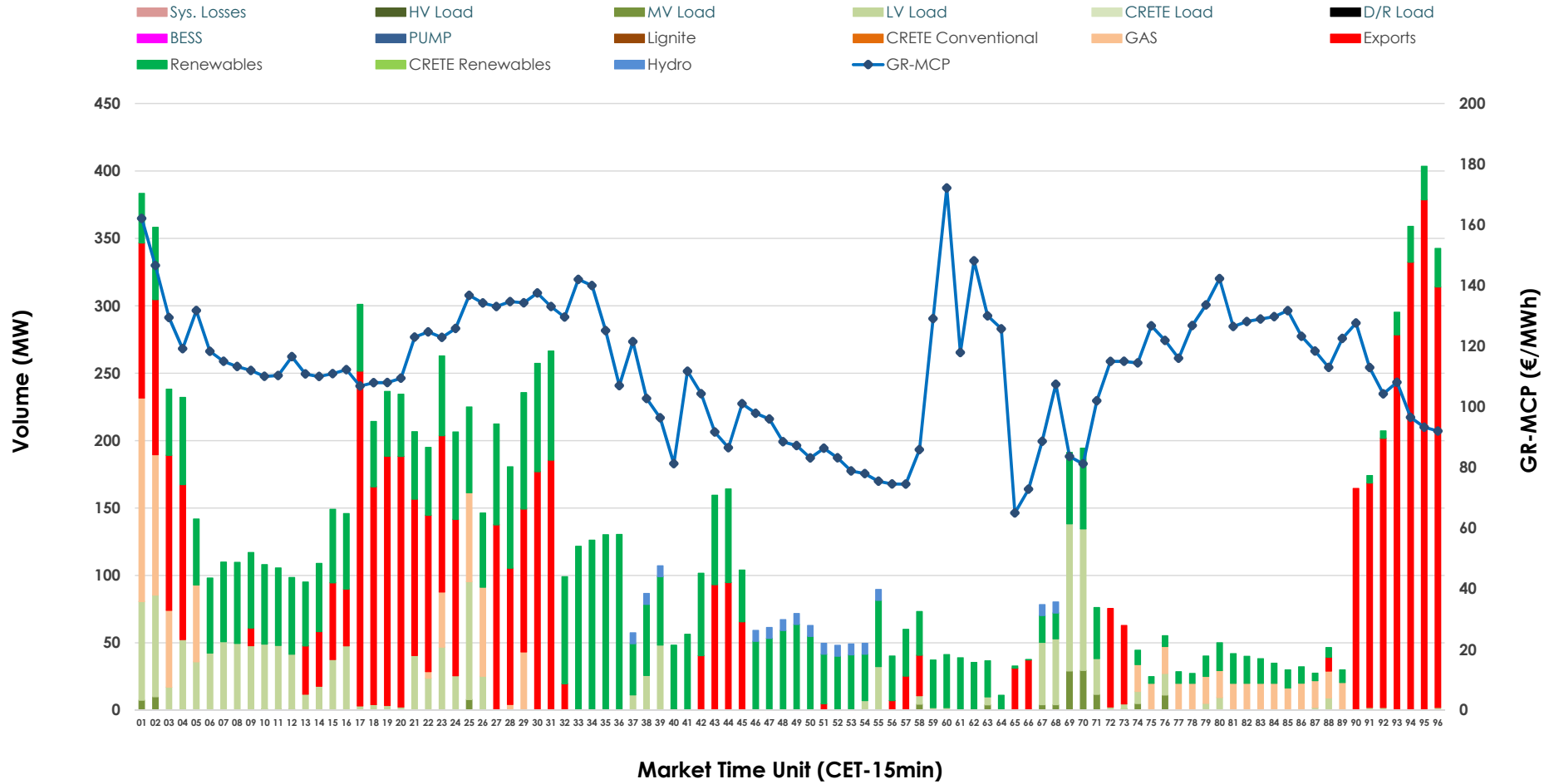


IDA '2' Market Outlook

12.06.2026 IDA '2' Market - Sell



12.06.2026 IDA '2' Market - Buy



GR Bidding Zone Weekly Figures

Delivery Day	06.06	07.06	08.06	09.06	10.06	11.06	12.06
	👇 -28%	👇 -29%	👆 74%	👉 18%	👇 -9%	👇 -2%	👉 8%
Avg.MCP (€/MWh)	80.15	56.96	99.05	116.65	106.30	104.28	112.76
Max.MCP (€/MWh)	152.78	148.74	189.62	225.37	197.85	162.31	172.17
Min.MCP (€/MWh)	-10.82	-21.61	-1.00	-2.01	-5.84	25.13	65.03
	👆 74%	👇 -33%	👉 -2%	👆 50%	👉 0%	👆 75%	👇 -35%
Tot.Vol(GWh)	5.28	3.53	3.47	5.21	5.19	9.06	5.91

Trades by Order Type

Delivery Day		06.06	07.06	08.06	09.06	10.06	11.06	12.06	
Ord Price Type		Sell & Buy Trades in (GWh) per Price Type							(%)
PPT	(S)	0.000	0.000	0.000	0.000	0.000	0.000	0.000	0.00%
HBD	(S)	1.595	0.633	1.594	1.737	2.001	4.165	2.211	74.85%
BLK	(S)	0.000	0.000	0.000	0.000	0.000	0.000	0.000	0.00%
CPL	(S)	1.045	1.130	0.141	0.868	0.594	0.363	0.743	25.15%
PPT	(B)	0.000	0.000	0.000	0.000	0.000	0.000	0.000	0.00%
HBD	(B)	2.207	1.399	1.169	1.610	0.623	1.521	1.699	57.49%
BLK	(B)	0.000	0.000	0.000	0.000	0.000	0.000	0.000	0.00%
CPL	(B)	0.434	0.364	0.566	0.996	1.972	3.007	1.256	42.51%
		Sell & Buy Orders Traded per Price Type							(%)
PPT	(S)	0	0	0	0	0	0	0	0.00%
HBD	(S)	393	223	305	333	306	557	259	100.00%
BLK	(S)	0	0	0	0	0	0	0	0.00%
PPT	(B)	0	0	0	0	0	0	0	0.00%
HBD	(B)	655	539	448	428	344	505	425	100.00%
BLK	(B)	0	0	0	0	0	0	0	0.00%

- MCP** Market Clearing Price (€/MWh)
- PPT** Priority Price-Taking
- HBD** Hybrid
- BLK** Block
- CPL** Market Coupling Flow

Trade's Volume Mix

	Sell - MWh	Buy - MWh	
Lignite (0.0%)	0	0	(0.0%)
Crete Conv. (0.0%)	0	0	(0.0%)
Gas (30.2%)	891	228	(7.7%)
Hydro (24.0%)	710	30	(1.0%)
Imports (25.1%)	743		
RES (14.3%)	423	1,032	(34.9%)
Crete RES (0.0%)	0	0	(0.0%)
BESS (0.1%)	4	0	(0.0%)
HV Load (2.5%)	73	0	(0.0%)
MV Load (1.8%)	52	33	(1.1%)
LV Load (1.9%)	58	375	(12.7%)
Crete Load (0.0%)	0	0	(0.0%)
Pumping (0.0%)	0	0	(0.0%)
Exports		1,256	(42.5%)
Sys.Losses (0.0%)	0	0	(0.0%)
D/R Load (0.0%)	0	0	(0.0%)

